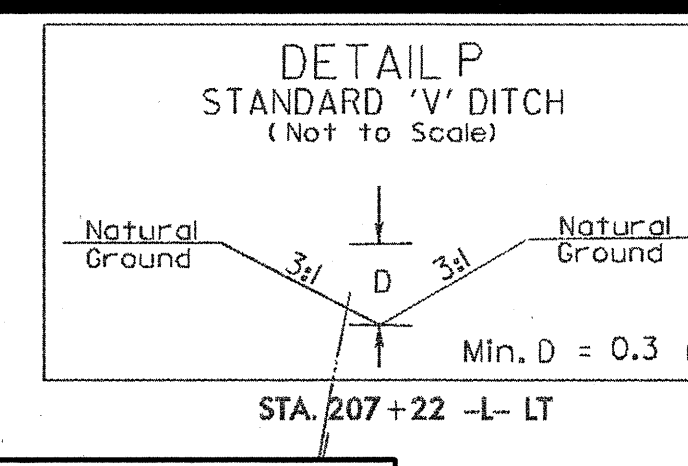


6/10/2005

NOTES

1. THE PROPOSED DRAINAGE DROP INLETS SHALL BE A MAXIMUM DEPTH INVERT OF 0.68M. THE CONTRACTOR SHALL WRAP EXISTING 200MM AND 400MM FORCE SEWER PIPE RIGHT OF LINE -L- WITH CLASS B CONCRETE WHICH HAVE A MINIMUM CLEARANCE WITH THE PROPOSED DRAINAGE (SEE DETAILS). IN CASES WHERE THERE ARE DIRECT CONFLICTS WITH THE PROPOSED DRAINAGE, THE CONTRACTOR SHALL LOWER OR RELOCATE THE EXISTING 200MM AND 400MM FORCE SEWER (SEE DETAILS). THE NECESSARY QUANTITIES HAVE BEEN ADDED TO THE CONTRACT TO FACILITATE THESE PROCEDURES.

2. REVISED PER BRMSD COMMENTS 2/1/05. REV. PER BRMSD 2/28/05



PROP. 360M OF 250mm PVC WATER PIPE, SDR 21, L38MPa WP

TIE TO EXIST. FORCE SEWER PIPE USING I- 50mm II 1/4" D.J. BEND AND NECESSARY FITTINGS, BEGIN LINE 18, LINE -L- STA. 209+05.4 38.2M RIGHT.

PROPOSED 51M OF 50mm PVC FORCE MAIN SEWER PIPE, SDR 21, L38MPa WP

PROP. I- 50mm GATE VALVE AND VALVE BOX, L38MPa WP

PROP. I- 50mm II 1/4" D.J. BEND

PROP. I- 150mm x 50mm D.J. TEE END LINE 18, LINE -L- STA. 209+02 11.9M RIGHT.

PROP. I- 50mm GATE VALVE AND VALVE BOX, L38MPa WP

TIE TO EXIST. WATER PIPE USING I- 75mm II 1/4" D.J. BEND AND NECESSARY FITTINGS

PROP. 26M OF 75mm PVC WATER PIPE, SDR 21, L38MPa WP

RELOCATE 2- EXIST. WATER METERS USING 2- 250mm x 20mm TAPPING SADDLES 2- 20mm CORPORATION STOPS WITH 2.5M OF 20mm P.E. WATER TUBING, SDR 9, L38MPa WP

PROP. I- 75mm GATE VALVE AND VALVE BOX, L38MPa WP

PROP. I- 75mm II 1/4" D.J. BEND

PROP. I- 250mm x 75mm D.J. TEE

PROP. I- 250mm GATE VALVE AND VALVE BOX, L38MPa WP

PROP. I- 150mm GATE VALVE AND VALVE BOX, L38MPa WP

RECONNECT 3- EXIST. WATER METERS USING 3- 250mm x 20mm TAPPING SADDLES 3- 20mm CORPORATION STOPS WITH 33M OF 20mm P.E. WATER TUBING, SDR 9, L38MPa WP

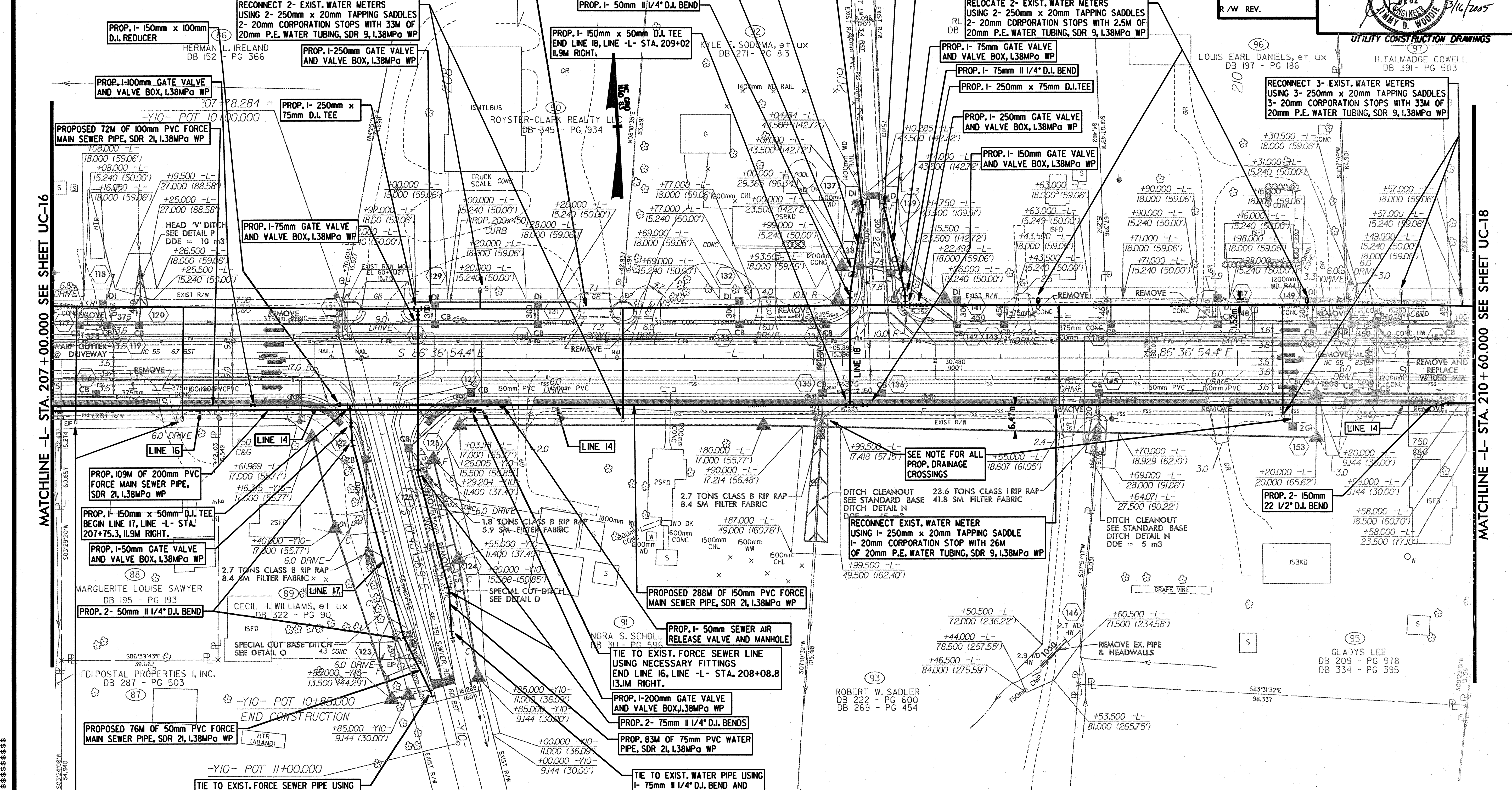
CONST. REV.
R/W REV.

PROJECT REFERENCE NO. R-2539C	SHEET NO. UC-17
R/W SHEET NO.	

Municipal Engineering Services
1110 N. 12th St. Ste. 300
Durham, NC 27701
919-286-7161

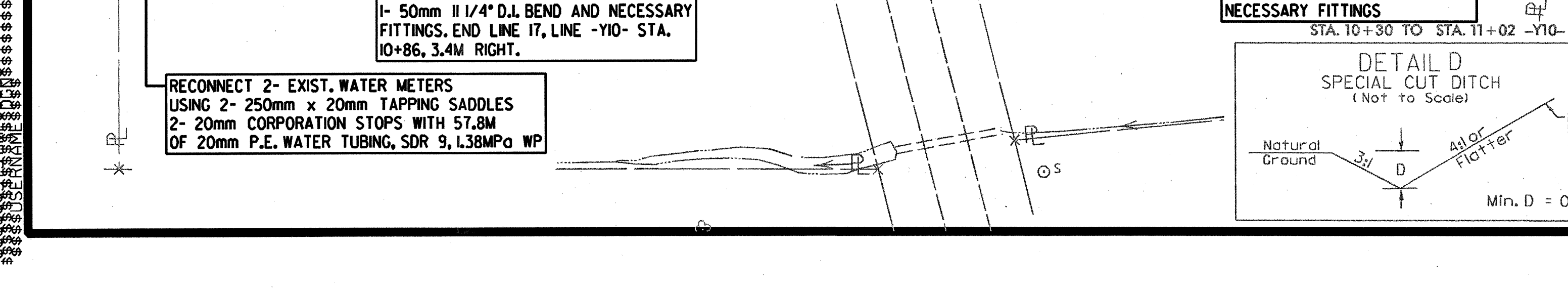
Professional Engineer
J. M. WOODIE
3/16/2005

UTILITY CONSTRUCTION DRAWINGS



MATCHLINE -L- STA. 207+00.000 SEE SHEET UC-16

MATCHLINE -L- STA. 210+60.000 SEE SHEET UC-18



RECONNECT EXIST. WATER METER USING I- 250mm x 20mm TAPPING SADDLE I- 20mm CORPORATION STOP WITH 26M OF 20mm P.E. WATER TUBING, SDR 9, L38MPa WP

DITCH CLEANOUT SEE STANDARD BASE DITCH DETAIL N DDE = 5 m3

RECONNECT EXIST. WATER METER USING 2- 250mm x 20mm TAPPING SADDLES 2- 20mm CORPORATION STOPS WITH 33M OF 20mm P.E. WATER TUBING, SDR 9, L38MPa WP

RELOCATE 2- EXIST. WATER METERS USING 2- 250mm x 20mm TAPPING SADDLES 2- 20mm CORPORATION STOPS WITH 2.5M OF 20mm P.E. WATER TUBING, SDR 9, L38MPa WP

PROP. I- 250mm GATE VALVE AND VALVE BOX, L38MPa WP

PROP. I- 75mm II 1/4" D.J. BEND

PROP. I- 250mm x 75mm D.J. TEE

PROP. I- 150mm GATE VALVE AND VALVE BOX, L38MPa WP

PROP. I- 250mm GATE VALVE AND VALVE BOX, L38MPa WP

PROP. I- 150mm GATE VALVE AND VALVE BOX, L38MPa WP

PROP. I- 75mm II 1/4" D.J. BEND

PROP. I- 75mm GATE VALVE AND VALVE BOX, L38MPa WP

PROP. I- 150mm GATE VALVE AND VALVE BOX, L38MPa WP

PROP. I- 150mm x 50mm D.J. TEE BEGIN LINE 17, LINE -L- STA. 207+75.3, 11.9M RIGHT.

PROP. I- 50mm GATE VALVE AND VALVE BOX, L38MPa WP

PROP. 2- 50mm II 1/4" D.J. BEND

PROP. 288M OF 150mm PVC FORCE MAIN SEWER PIPE, SDR 21, L38MPa WP

PROP. I- 50mm SEWER AIR RELEASE VALVE AND MANHOLE

TIE TO EXIST. FORCE SEWER LINE USING NECESSARY FITTINGS END LINE 16, LINE -L- STA. 208+08.8 13.1M RIGHT.

PROP. I- 200mm GATE VALVE AND VALVE BOX, L38MPa WP

PROP. 2- 75mm II 1/4" D.J. BENDS

PROP. 83M OF 75mm PVC WATER PIPE, SDR 21, L38MPa WP

TIE TO EXIST. WATER PIPE USING I- 75mm II 1/4" D.J. BEND AND NECESSARY FITTINGS