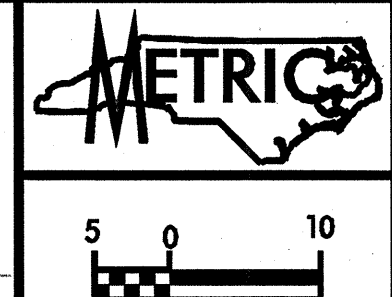


NOTES

- 1. THE PROPOSED DRAINAGE DROP INLETS SHALL BE A MAXIMUM DEPTH INVERT OF 0.686M. THE CONTRACTOR SHALL WRAP EXISTING 200mm AND 400mm FORCE SEWER PIPE RIGHT OF LINE -L- WITH CLASS B CONCRETE WHICH HAVE A MINIMUM CLEARANCE WITH THE PROPOSED DRAINAGE (SEE DETAILS). IN CASES WHERE THERE ARE DIRECT CONFLICTS WITH THE PROPOSED DRAINAGE, THE CONTRACTOR SHALL LOWER OR RELOCATE THE EXISTING 200mm AND 400mm FORCE SEWER (SEE DETAILS). THE NECESSARY QUANTITIES HAVE BEEN ADDED TO THE CONTRACT TO FACILITATE THESE PROCEDURES.
- 2. REVISED PER BRMSD COMMENTS 2/28/05

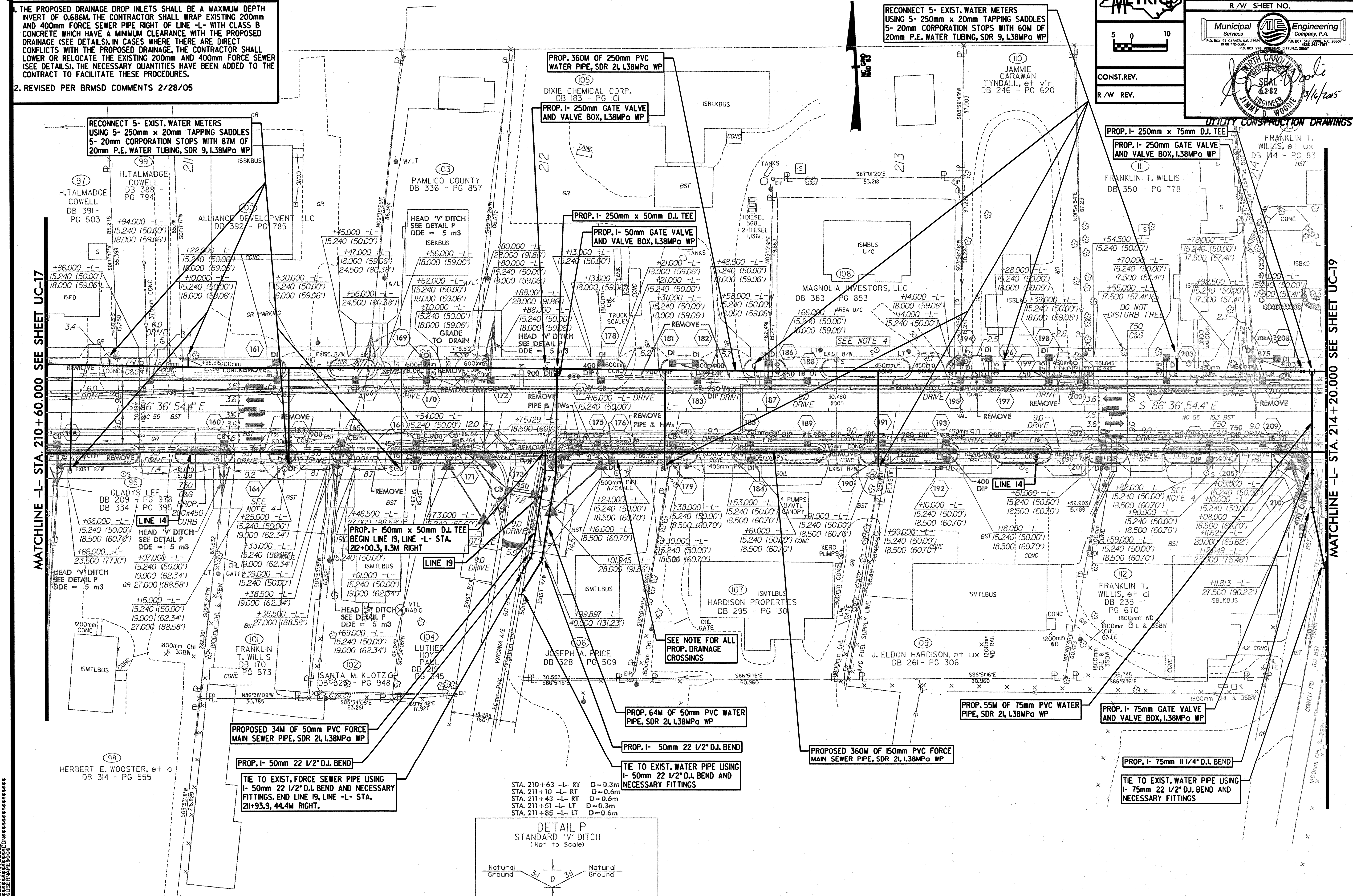


CONST. REV.
 R/W REV.

UTILITY CONSTRUCTION DRAWINGS

MATCHLINE -L- STA. 210 + 60.000 SEE SHEET UC-17

MATCHLINE -L- STA. 214 + 20.000 SEE SHEET UC-19



RECONNECT 5- EXIST. WATER METERS USING 5- 250mm x 20mm TAPPING SADDLES 5- 20mm CORPORATION STOPS WITH 87M OF 20mm P.E. WATER TUBING, SDR 9, 1.38MPa WP

PROP. 360M OF 250mm PVC WATER PIPE, SDR 21, 1.38MPa WP
 PROP. 1- 250mm GATE VALVE AND VALVE BOX, 1.38MPa WP

RECONNECT 5- EXIST. WATER METERS USING 5- 250mm x 20mm TAPPING SADDLES 5- 20mm CORPORATION STOPS WITH 87M OF 20mm P.E. WATER TUBING, SDR 9, 1.38MPa WP

PROP. 1- 250mm x 75mm D.I. TEE
 PROP. 1- 250mm GATE VALVE AND VALVE BOX, 1.38MPa WP

PROP. 1- 250mm x 50mm D.I. TEE
 PROP. 1- 50mm GATE VALVE AND VALVE BOX, 1.38MPa WP

PROP. 1- 150mm x 50mm D.I. TEE BEGIN LINE 19, LINE -L- STA. 212+00.3, 11.3M RIGHT

PROP. 64M OF 50mm PVC WATER PIPE, SDR 21, 1.38MPa WP

PROP. 55M OF 75mm PVC WATER PIPE, SDR 21, 1.38MPa WP

PROP. 1- 75mm GATE VALVE AND VALVE BOX, 1.38MPa WP

PROPOSED 360M OF 150mm PVC FORCE MAIN SEWER PIPE, SDR 21, 1.38MPa WP

PROPOSED 34M OF 50mm PVC FORCE MAIN SEWER PIPE, SDR 21, 1.38MPa WP

PROP. 1- 50mm 22 1/2" D.I. BEND

PROP. 1- 50mm 22 1/2" D.I. BEND

PROP. 1- 75mm 11 1/4" D.I. BEND

TIE TO EXIST. FORCE SEWER PIPE USING 1- 50mm 22 1/2" D.I. BEND AND NECESSARY FITTINGS. END LINE 19, LINE -L- STA. 211+93.9, 44.4M RIGHT.

TIE TO EXIST. WATER PIPE USING 1- 50mm 22 1/2" D.I. BEND AND NECESSARY FITTINGS

TIE TO EXIST. WATER PIPE USING 1- 75mm 22 1/2" D.I. BEND AND NECESSARY FITTINGS

- STA. 210+63 -L- RT D=0.3m
- STA. 211+10 -L- RT D=0.6m
- STA. 211+43 -L- RT D=0.6m
- STA. 211+51 -L- LT D=0.3m
- STA. 211+85 -L- LT D=0.6m

