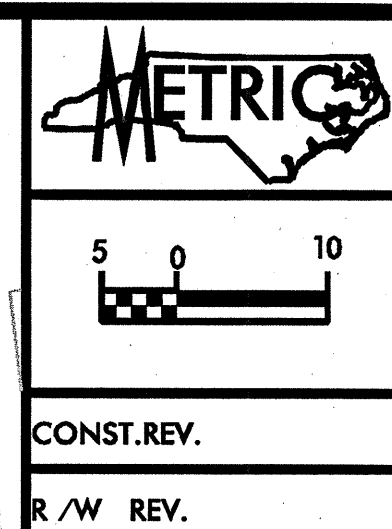


NOTES

- 1. THE PROPOSED DRAINAGE DROP INLETS SHALL BE A MAXIMUM DEPTH INVERT OF 0.686M. THE CONTRACTOR SHALL WRAP EXISTING 200mm AND 400mm FORCE SEWER PIPE RIGHT OF LINE -L- WITH CLASS B CONCRETE WHICH HAVE A MINIMUM CLEARANCE WITH THE PROPOSED DRAINAGE (SEE DETAILS). IN CASES WHERE THERE ARE DIRECT CONFLICTS WITH THE PROPOSED DRAINAGE, THE CONTRACTOR SHALL LOWER OR RELOCATE THE EXISTING 200mm AND 400mm FORCE SEWER (SEE DETAILS). THE NECESSARY QUANTITIES HAVE BEEN ADDED TO THE CONTRACT TO FACILITATE THESE PROCEDURES.
- 2. REVISED PER BRMSD COMMENTS 2/2/05.
- 3. REVISED PER BRMSD COMMENTS 2/28/05.

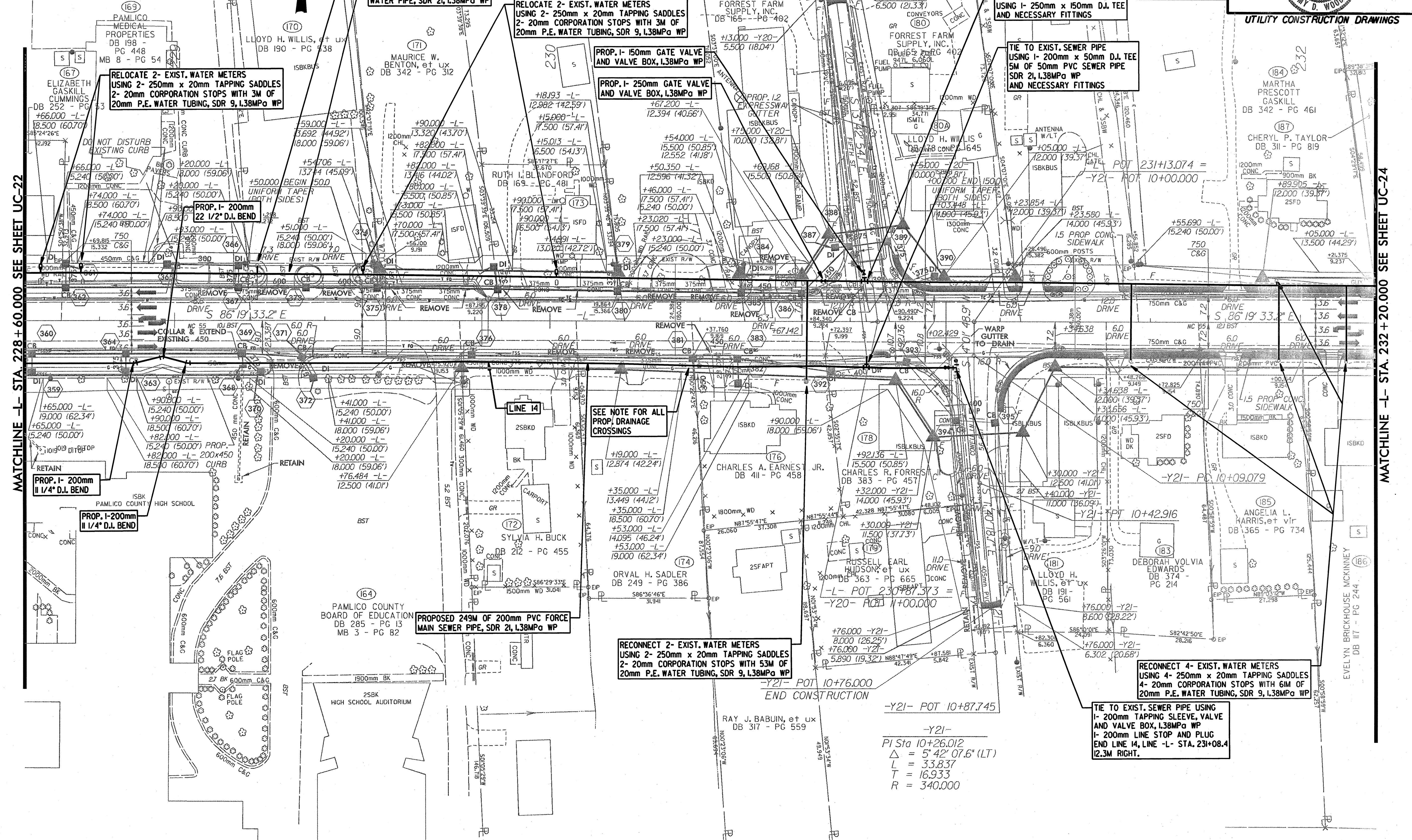


Municipal Engineering Services
 Company, P.A.
 316/2005

UTILITY CONSTRUCTION DRAWINGS

MATCHLINE -L- STA. 228 + 60.000 SEE SHEET UC-22

MATCHLINE -L- STA. 232 + 20.000 SEE SHEET UC-24



RELOCATE 2- EXIST. WATER METERS USING 2- 250mm x 20mm TAPPING SADDLES 2- 20mm CORPORATION STOPS WITH 3M OF 20mm P.E. WATER TUBING, SDR 9, L38MPa WP

RELOCATE EXIST. FIRE HYDRANT USING 1- 250mm x 150mm D.I. TEE AND 2.5M OF 150mm D.I. WATER PIPE, 2.41MPa WP, 1- GATE VALVE AND VALVE BOX L38MPa WP

RELOCATE 2- EXIST. WATER METERS USING 2- 250mm x 20mm TAPPING SADDLES 2- 20mm CORPORATION STOPS WITH 3M OF 20mm P.E. WATER TUBING, SDR 9, L38MPa WP

PROP. 1- 150mm GATE VALVE AND VALVE BOX, L38MPa WP

PROP. 1- 250mm GATE VALVE AND VALVE BOX, L38MPa WP

TIE TO EXIST. WATER PIPE USING 1- 250mm x 150mm D.I. TEE AND NECESSARY FITTINGS

TIE TO EXIST. SEWER PIPE USING 1- 200mm x 50mm D.I. TEE 5M OF 50mm PVC SEWER PIPE SDR 21, L38MPa WP AND NECESSARY FITTINGS

SEE NOTE FOR ALL PROP. DRAINAGE CROSSINGS

PROPOSED 249M OF 200mm PVC FORCE MAIN SEWER PIPE, SDR 21, L38MPa WP

RECONNECT 2- EXIST. WATER METERS USING 2- 250mm x 20mm TAPPING SADDLES 2- 20mm CORPORATION STOPS WITH 53M OF 20mm P.E. WATER TUBING, SDR 9, L38MPa WP

RECONNECT 4- EXIST. WATER METERS USING 4- 250mm x 20mm TAPPING SADDLES 4- 20mm CORPORATION STOPS WITH 61M OF 20mm P.E. WATER TUBING, SDR 9, L38MPa WP

TIE TO EXIST. SEWER PIPE USING 1- 200mm TAPPING SLEEVE, VALVE AND VALVE BOX, L38MPa WP 1- 200mm LINE STOP AND PLUG END LINE 14, LINE -L- STA. 231+08.4 12.3M RIGHT.

-Y21-
 P1 Sta 10+26.012
 $\Delta = 5^{\circ} 42' 07.6" (LT)$
 L = 33.837
 T = 16.933
 R = 340.000

-Y21- POT 10+76.000
 END CONSTRUCTION

-Y21- POT 10+87.745

-Y21- POT 10+09.079

-Y21- POT 10+42.916

-Y20- POT 10+00.000

-Y21- POT 10+42.916

-Y21- POT 10+13.000
 BEGIN CONSTRUCTION