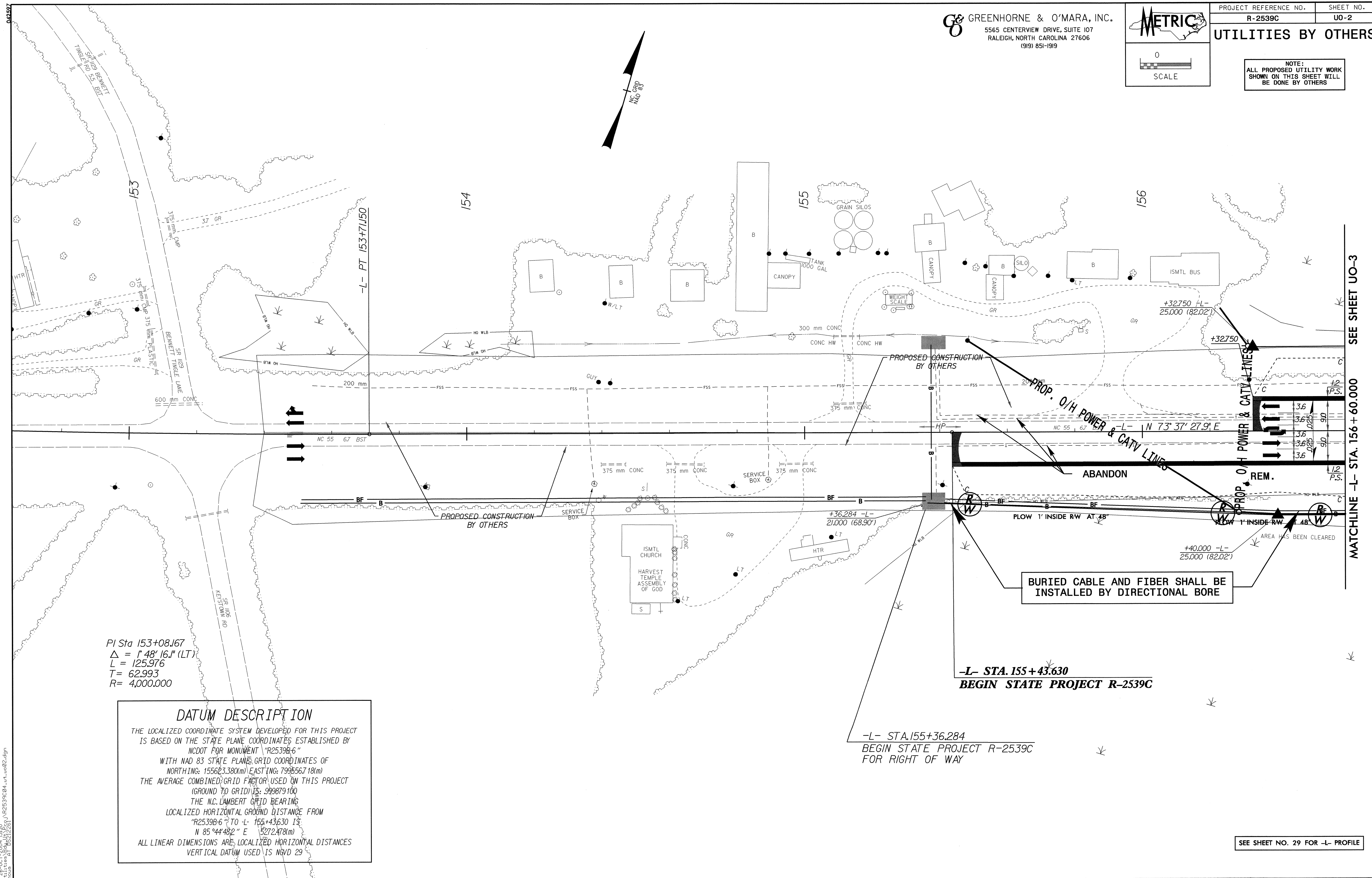


**UTILITIES BY OTHERS**

NOTE:  
 ALL PROPOSED UTILITY WORK  
 SHOWN ON THIS SHEET WILL  
 BE DONE BY OTHERS



PI Sta 153+08.167  
 $\Delta = 1^{\circ} 48' 16.1''$  (LT)  
 L = 125.976  
 T = 62.993  
 R = 4,000.000

**DATUM DESCRIPTION**  
 THE LOCALIZED COORDINATE SYSTEM DEVELOPED FOR THIS PROJECT IS BASED ON THE STATE PLANE COORDINATES ESTABLISHED BY NCDOT FOR MONUMENT "R2539B-6" WITH NAD 83 STATE PLANE GRID COORDINATES OF NORTHING: 155623.380(m) EASTING: 799556.718(m) THE AVERAGE COMBINED GRID FACTOR USED ON THIS PROJECT (GROUND TO GRID) IS: 999879.100 THE N.C. LAMBERT GRID BEARING LOCALIZED HORIZONTAL GROUND DISTANCE FROM "R2539B-6" TO -L- 155+43.630 IS N 85°44'48.2" E 5272.478(m) ALL LINEAR DIMENSIONS ARE LOCALIZED HORIZONTAL DISTANCES VERTICAL DATUM USED IS NGVD 29

BURIED CABLE AND FIBER SHALL BE INSTALLED BY DIRECTIONAL BORE

**-L- STA. 155+43.630**  
**BEGIN STATE PROJECT R-2539C**

**-L- STA. 155+36.284**  
**BEGIN STATE PROJECT R-2539C**  
 FOR RIGHT OF WAY

SEE SHEET NO. 29 FOR -L- PROFILE

26-OCT-2004 14:50 R:\Utilities\2539C\UO-2.dwg

MATCHLINE -L- STA. 156 + 60.000 SEE SHEET UO-3