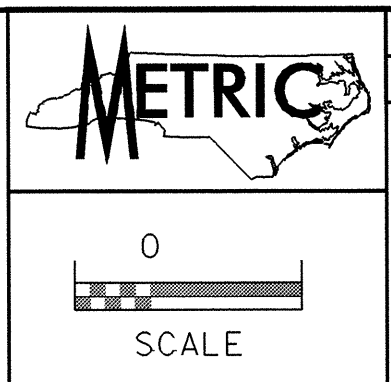


042592



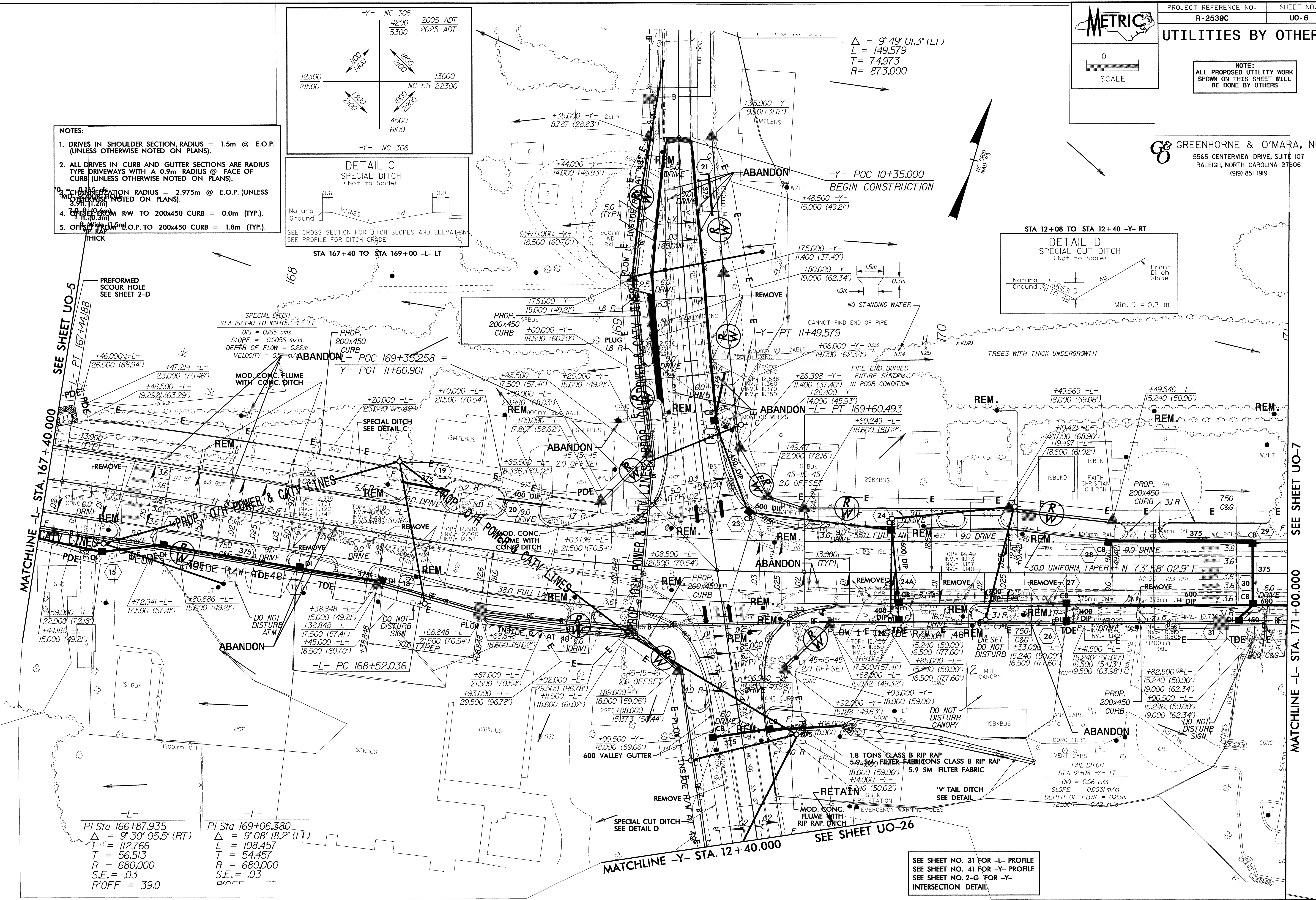
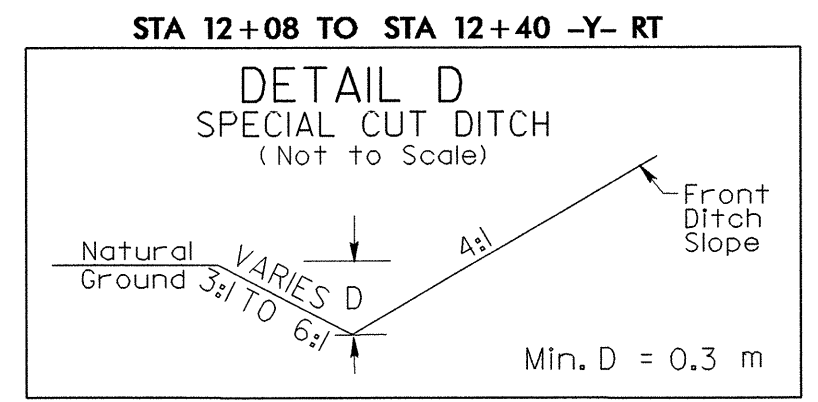
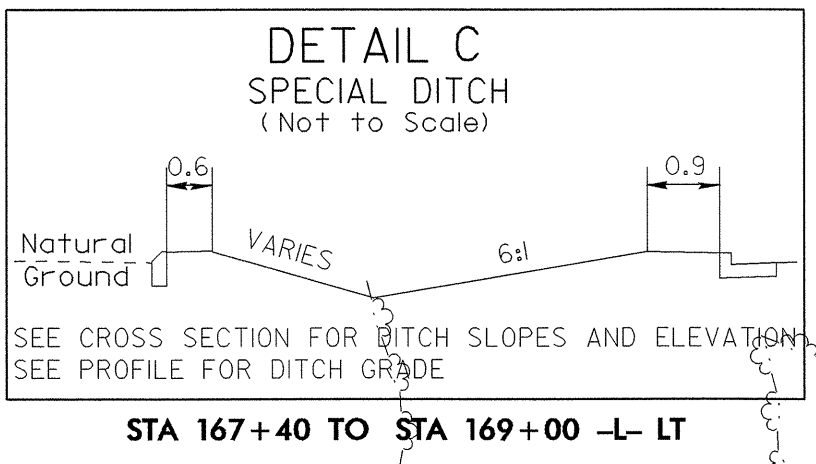
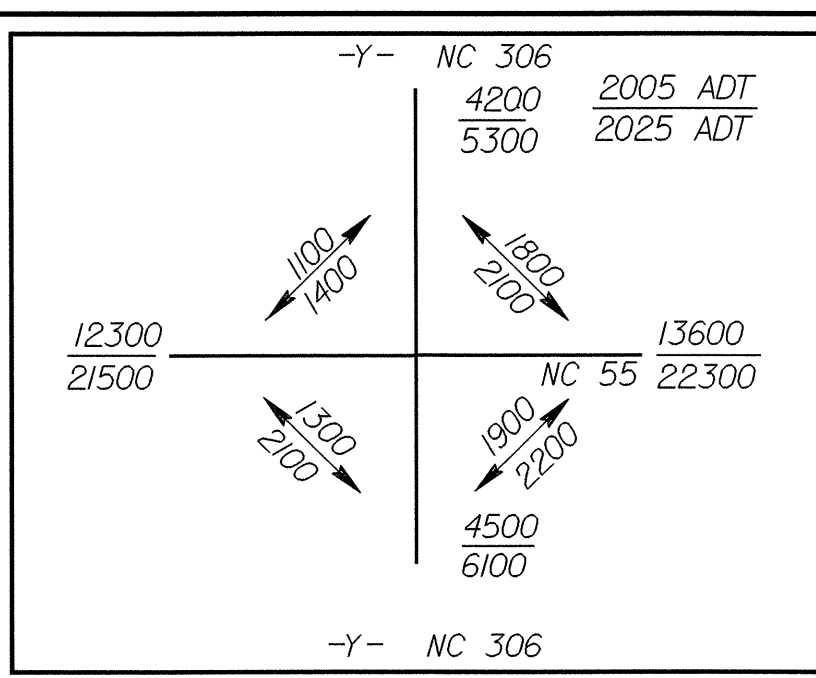
PROJECT REFERENCE NO. R-2539C SHEET NO. UO-6

### UTILITIES BY OTHERS

NOTE: ALL PROPOSED UTILITY WORK SHOWN ON THIS SHEET WILL BE DONE BY OTHERS

**G&O GREENHORNE & O'MARA, INC.**  
5565 CENTERVIEW DRIVE, SUITE 107  
RALEIGH, NORTH CAROLINA 27606  
(919) 851-1919

- NOTES:**
1. DRIVES IN SHOULDER SECTION, RADIUS = 1.5m @ E.O.P. (UNLESS OTHERWISE NOTED ON PLANS).
  2. ALL DRIVES IN CURB AND GUTTER SECTIONS ARE RADIUS TYPE DRIVEWAYS WITH A 0.9m RADIUS @ FACE OF CURB (UNLESS OTHERWISE NOTED ON PLANS).
  3. CHANGEPATH RADIUS = 2.975m @ E.O.P. (UNLESS OTHERWISE NOTED ON PLANS).
  4. OFF-ROAD FROM RW TO 200x450 CURB = 0.0m (TYP.).
  5. OFF-ROAD FROM E.O.P. TO 200x450 CURB = 1.8m (TYP.).



$\Delta = 9^{\circ} 30' 05.5''$  (RT)  
 $L = 112.766$   
 $T = 56.513$   
 $R = 680.000$   
 $S.E. = .03$   
 $R/OFF = 39.0$

$\Delta = 9^{\circ} 08' 18.2''$  (LT)  
 $L = 108.457$   
 $T = 54.457$   
 $R = 680.000$   
 $S.E. = .03$

SEE SHEET NO. 31 FOR -L- PROFILE  
SEE SHEET NO. 41 FOR -Y- PROFILE  
SEE SHEET NO. 2-G FOR -Y- INTERSECTION DETAIL

26-OCT-2004 13:50 R:\Utilities\Roads\2539\2539-UO-6.dgn