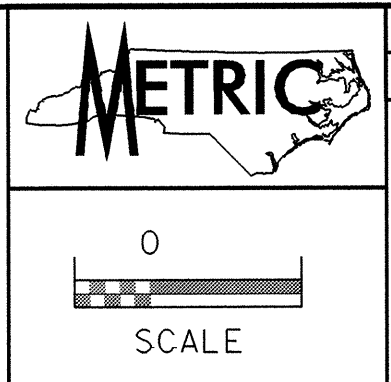


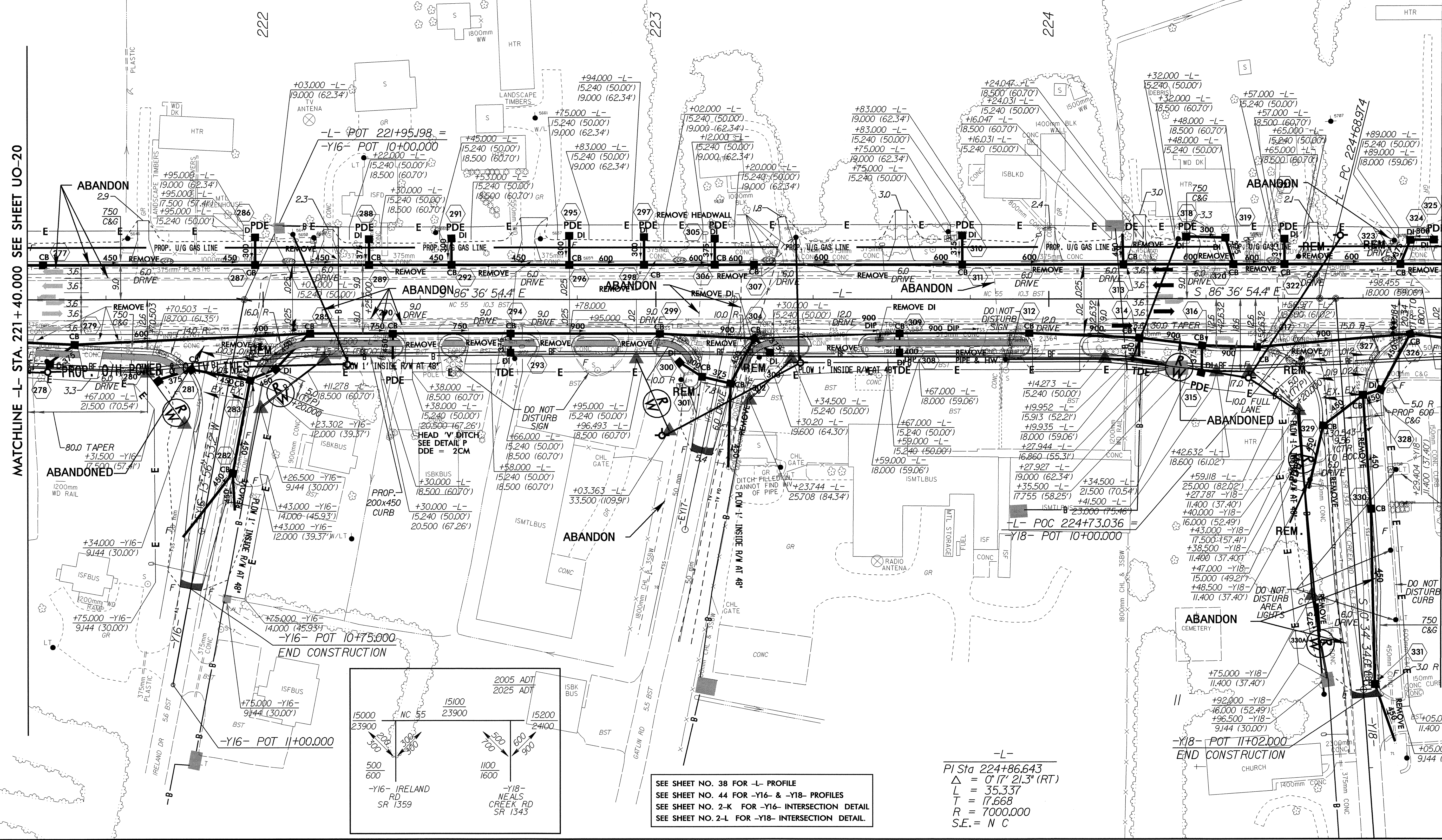
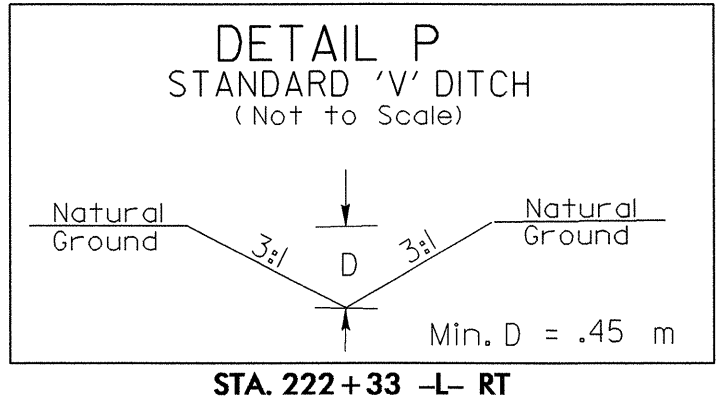
UTILITIES BY OTHERS

NOTE: ALL PROPOSED UTILITY WORK SHOWN ON THIS SHEET WILL BE DONE BY OTHERS

GREENHORNE & O'MARA, INC. 5565 CENTERVIEW DRIVE, SUITE 107 RALEIGH, NORTH CAROLINA 27606 (919) 851-1919

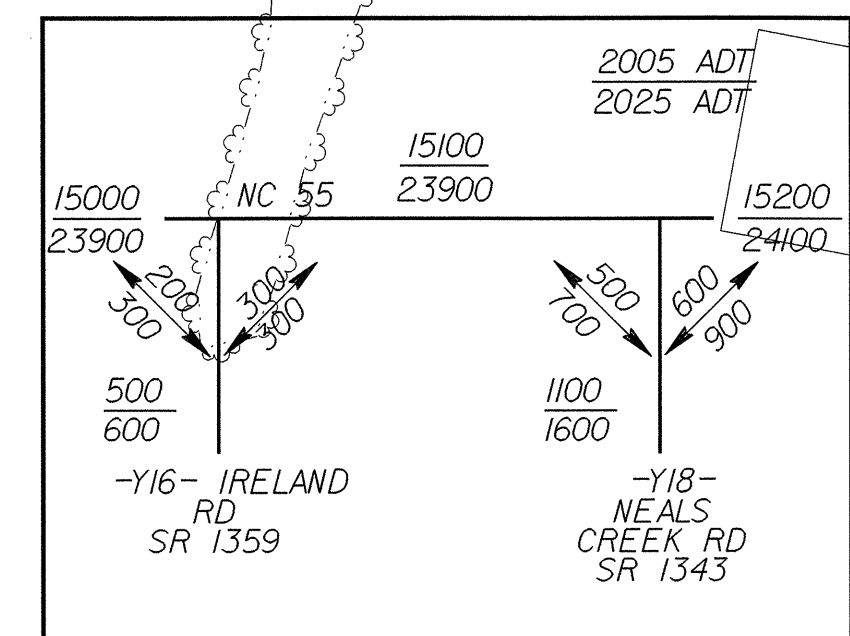


- NOTES:
1. DRIVES IN SHOULDER SECTION, RADIUS = 1.5m @ E.O.P. (UNLESS OTHERWISE NOTED ON PLANS).
  2. ALL DRIVES IN CURB AND GUTTER SECTIONS ARE RADIUS TYPE DRIVEWAYS WITH A 0.9m RADIUS @ FACE OF CURB (UNLESS OTHERWISE NOTED ON PLANS).
  3. CHANNELIZATION RADIUS = 3.095m @ E.O.P. (UNLESS OTHERWISE NOTED ON PLANS).
  4. OFFSET FROM RW TO 200x450 CURB = 0.0m (TYP.)



MATCHLINE -L- STA. 221 + 40.000 SEE SHEET UO-20

MATCHLINE -L- STA. 225 + 00.000 SEE SHEET UO-22



SEE SHEET NO. 38 FOR -L- PROFILE  
 SEE SHEET NO. 44 FOR -Y16- & -Y18- PROFILES  
 SEE SHEET NO. 2-K FOR -Y16- INTERSECTION DETAIL  
 SEE SHEET NO. 2-L FOR -Y18- INTERSECTION DETAIL.

-L-  
 PI Sta 224+86.643  
 $\Delta = 0' 17' 21.3''$  (RT)  
 $L = 35.337'$   
 $T = 17.668'$   
 $R = 7000.000'$   
 $S.E. = N C$