

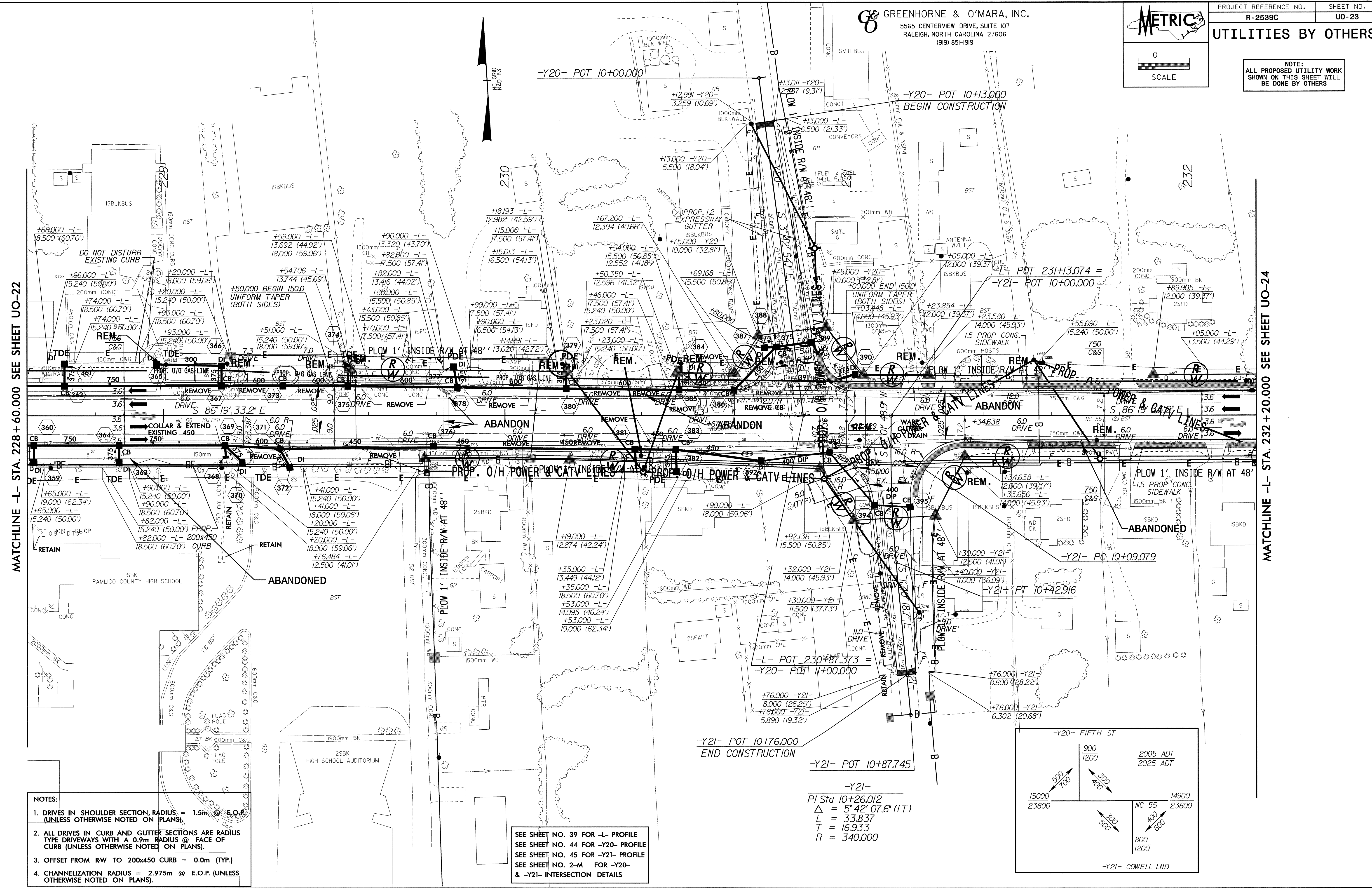
UTILITIES BY OTHERS

NOTE:
ALL PROPOSED UTILITY WORK SHOWN ON THIS SHEET WILL BE DONE BY OTHERS

042697

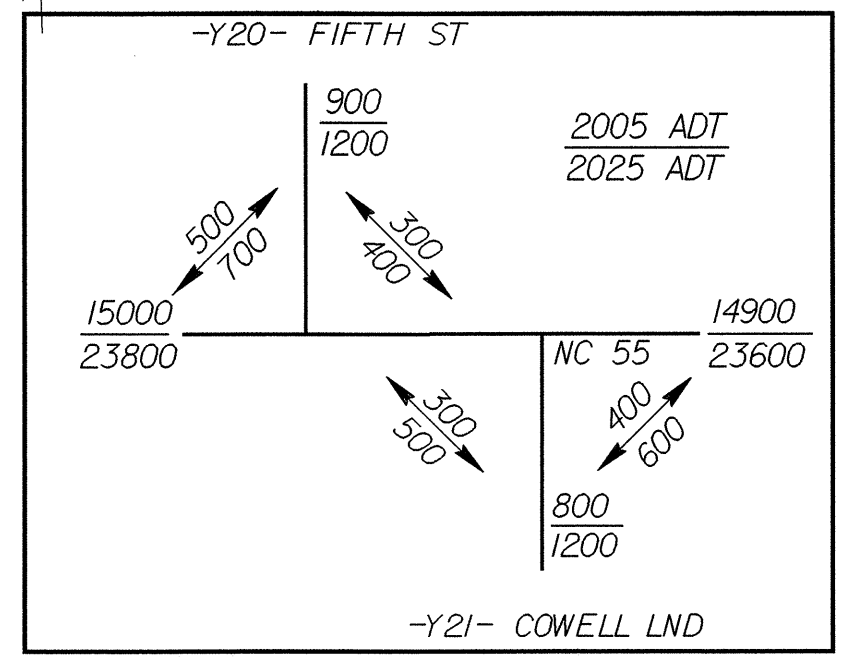
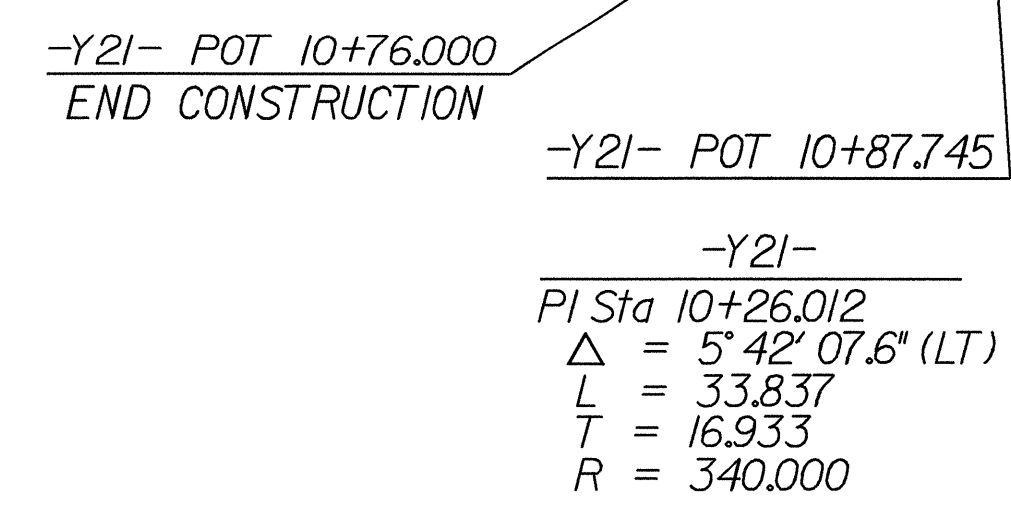
MATCHLINE -L- STA. 228 + 60.000 SEE SHEET UO-22

MATCHLINE -L- STA. 232 + 20.000 SEE SHEET UO-24



- NOTES:
1. DRIVES IN SHOULDER SECTION, RADIUS = 1.5m @ E.O.P. (UNLESS OTHERWISE NOTED ON PLANS).
 2. ALL DRIVES IN CURB AND GUTTER SECTIONS ARE RADIUS TYPE DRIVEWAYS WITH A 0.9m RADIUS @ FACE OF CURB (UNLESS OTHERWISE NOTED ON PLANS).
 3. OFFSET FROM RW TO 200x450 CURB = 0.0m (TYP.)
 4. CHANNELIZATION RADIUS = 2.975m @ E.O.P. (UNLESS OTHERWISE NOTED ON PLANS).

SEE SHEET NO. 39 FOR -L- PROFILE
SEE SHEET NO. 44 FOR -Y20- PROFILE
SEE SHEET NO. 45 FOR -Y21- PROFILE
SEE SHEET NO. 2-M FOR -Y20- & -Y21- INTERSECTION DETAILS



26-OCT-2004 13:59
 R:\Projects\2539C\25_uo23.dgn
 R:\Projects\2539C\25_uo23.dgn