

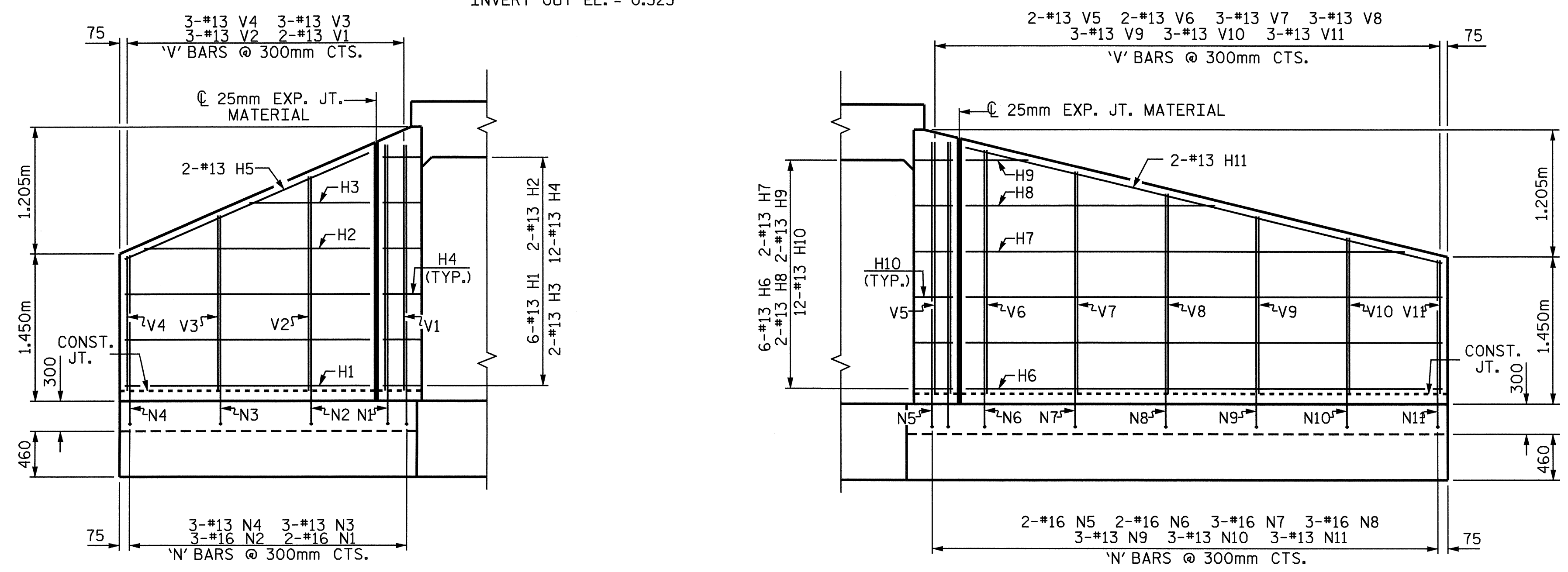
PLAN W2

PLAN W1

600mm Ø PIPE THRU WING DETAIL

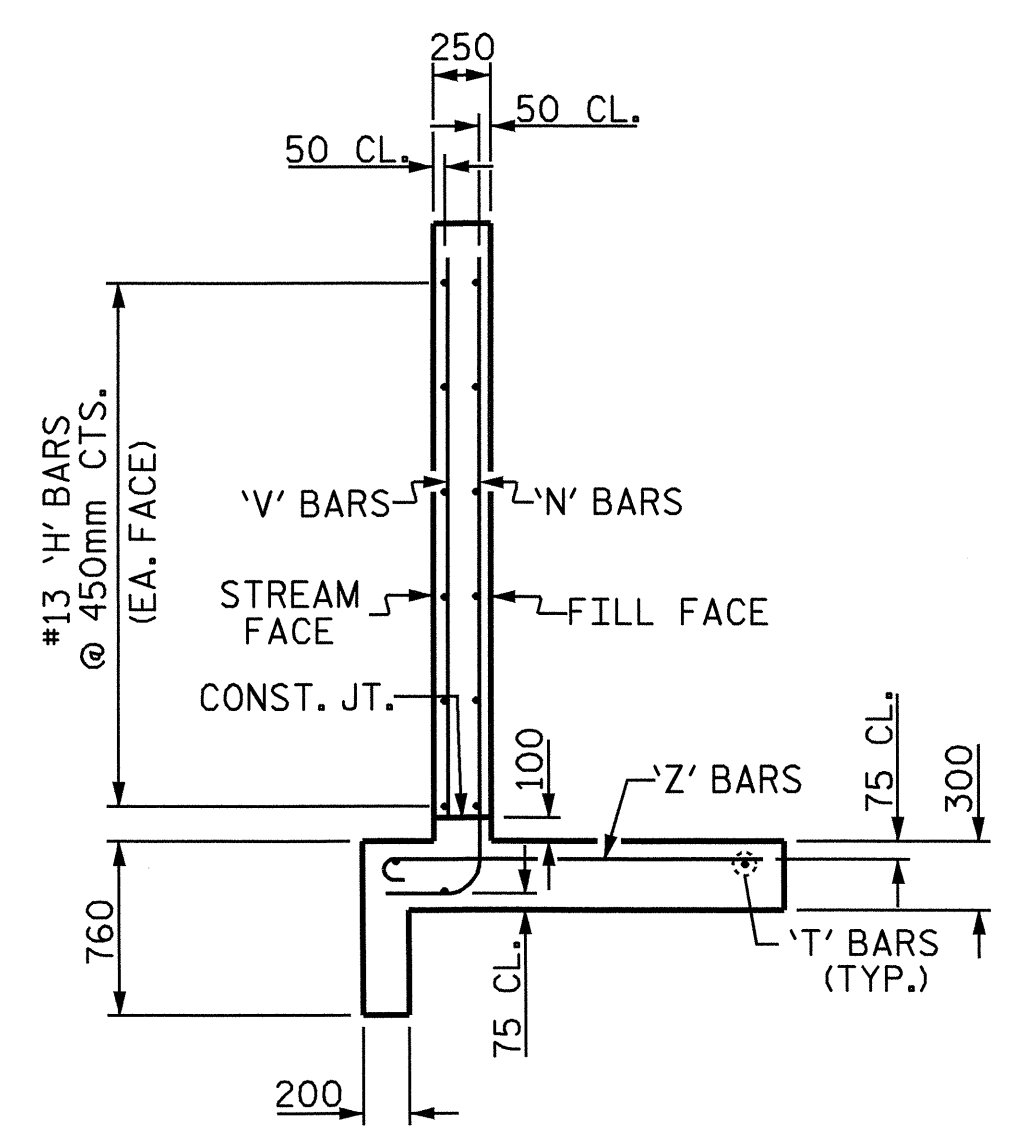
NOTE: THE 600mm Ø RCP THROUGH WING WALL W2 OF THE CULVERT WILL BE LOCATED BY THE ENGINEER. THE REINFORCING STEEL WILL BE FIELD BENT AS NECESSARY TO CLEAR PIPE.

600mm Ø RCP OUTLETTED THROUGH CULVERT WING WALL INVERT OUT EL. = 0.323



ELEVATION W2

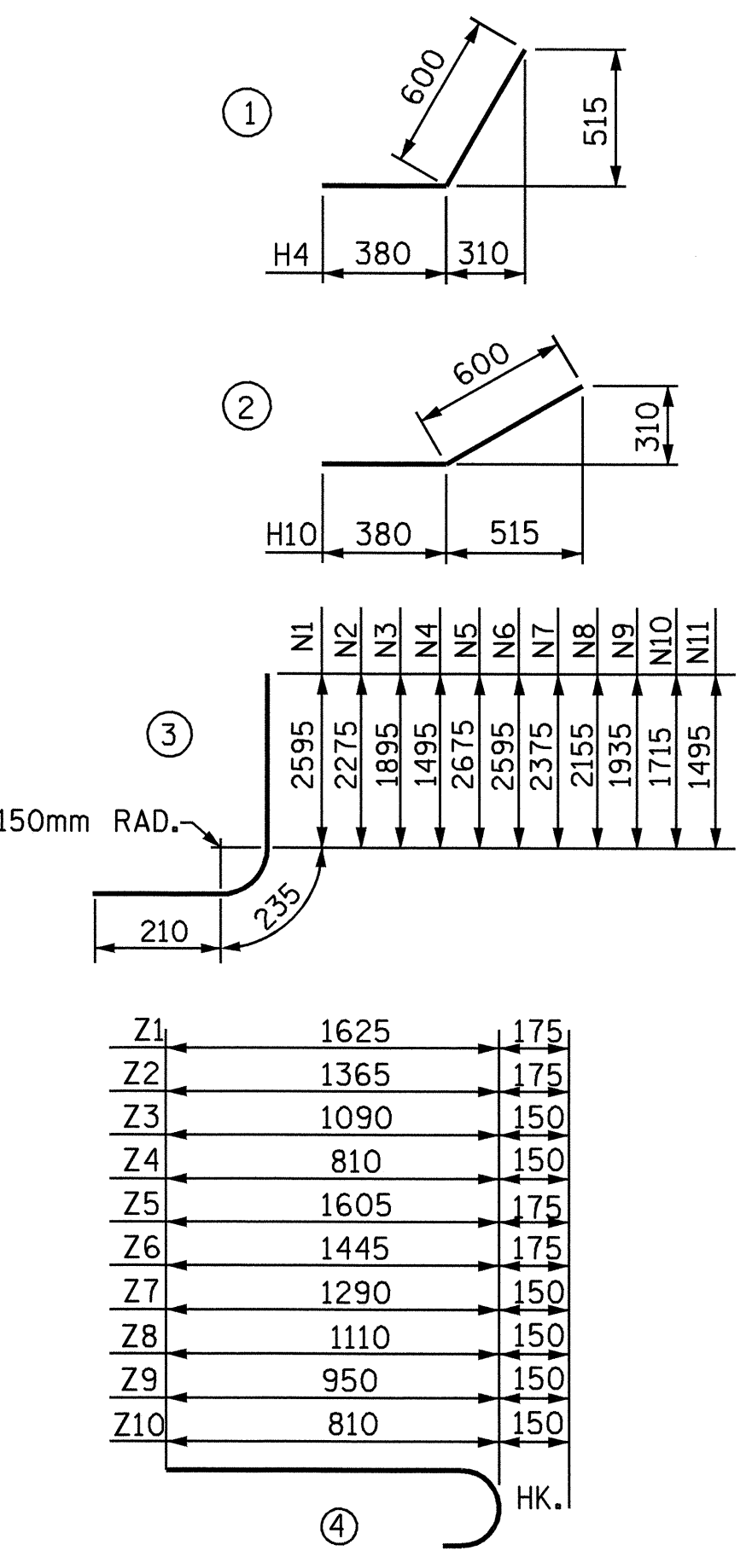
ELEVATION W1



TYPICAL WING SECTION

BAR TYPES

ALL BAR DIMENSIONS ARE OUT TO OUT.



BILL OF MATERIAL FOR RIGHT EXTENSION WINGS

BAR	NO.	SIZE	TYPE	LENGTH	WEIGHT
E1	16	16	STR	1400	35
H1	6	13	STR	2440	15
H2	2	13	STR	2240	5
H3	2	13	STR	1200	2
H4	12	13	STR	980	12
H5	2	13	STR	2640	5
H6	6	13	STR	4740	29
H7	2	13	STR	4460	9
H8	2	13	STR	2600	5
H9	2	13	STR	1760	2
H10	12	13	STR	980	12
H11	2	13	STR	4860	10
N1	2	16	3	3040	10
N2	2	16	3	2720	12
N3	3	13	3	2340	7
N4	3	13	3	1940	6
N5	2	16	3	3120	10
N6	2	16	3	3040	10
N7	3	13	3	2820	13
N8	3	13	3	2600	12
N9	3	13	3	2380	7
N10	3	13	3	2160	6
N11	3	13	3	1940	6
S1	6	19	STR	1800	24
T1	3	16	STR	3000	14
T2	3	16	STR	5300	25
V1	2	13	STR	2420	5
V2	2	13	STR	2100	5
V3	3	13	STR	1720	5
V4	3	13	STR	1320	4
V5	3	13	STR	2500	5
V6	3	13	STR	2420	5
V7	3	13	STR	2200	6
V8	3	13	STR	1980	6
V9	3	13	STR	1760	5
V10	3	13	STR	1540	4
V11	3	13	STR	1320	4
Z1	2	16	4	1800	6
Z2	3	16	4	1540	7
Z3	3	13	4	1240	3
Z4	3	13	4	960	3
Z5	4	16	4	1780	11
Z6	3	16	4	1620	8
Z7	3	13	4	1440	4
Z8	3	13	4	1260	4
Z9	3	13	4	1100	4
Z10	3	13	4	960	3

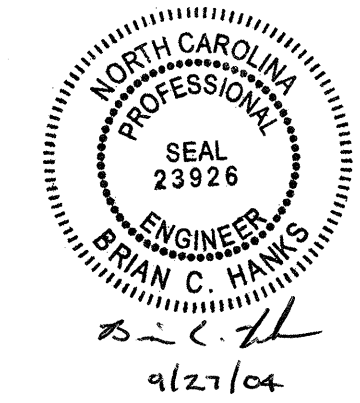
EPOXY COATED REINFORCING STEEL FOR 2 WING WALLS	411	kg
CLASS A CONCRETE		
2 WINGS	8.8	m ³
1 HEADWALL	0.9	m ³
2 EDGE BEAMS	1.4	m ³
1 END CURTAIN WALLS	1.1	m ³
TOTAL	12.2	m³

PROJECT NO. R-2539C
PAMLICO COUNTY
 STATION: 196+60.650 -L-

SHEET 8 OF 9

STATE OF NORTH CAROLINA
 DEPARTMENT OF TRANSPORTATION
 RALEIGH

WINGS FOR CONCRETE BOX CULVERT
 H=2.400m 62° SKEW
 RIGHT EXTENSION



ASSEMBLED BY : KEITH D. LAYNE	DATE : 12-10-03
CHECKED BY : A. B. NAIK	DATE : 4-6-04
DRAWN BY : JLR	6/97
CHECKED BY : VAP	6/97

FOR WING ORIENTATION, SEE BARREL STANDARD SHEET.

REVISIONS					SHEET NO.
NO.	BY:	DATE:	NO.	BY:	DATE:
1			3		
2			4		

C-8
TOTAL SHEETS
20