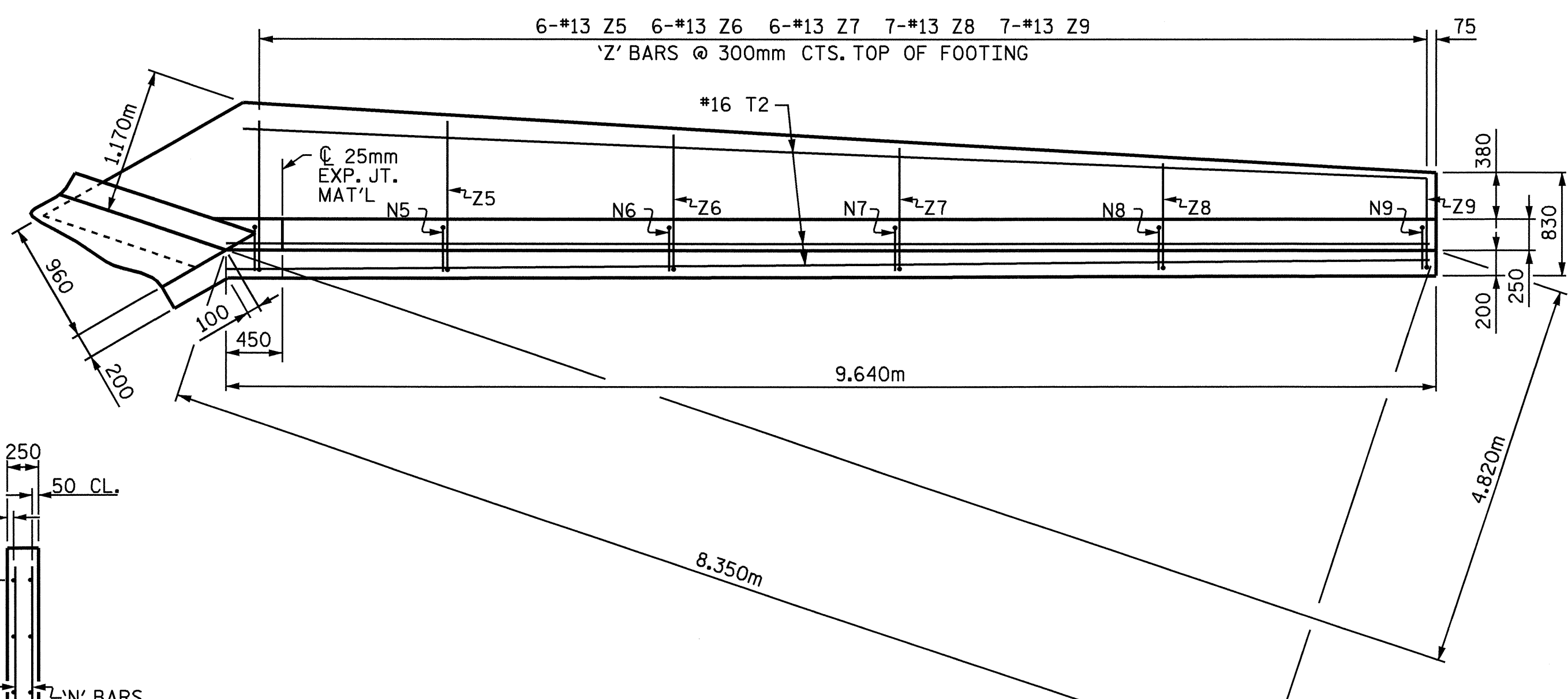
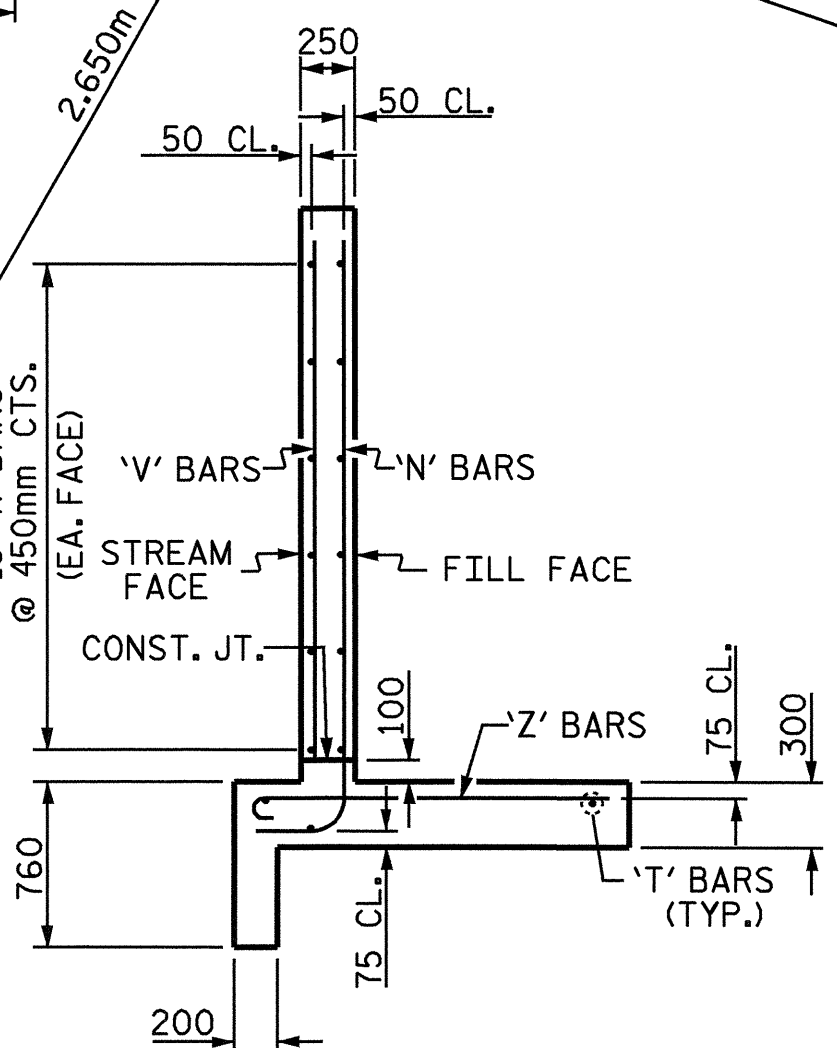


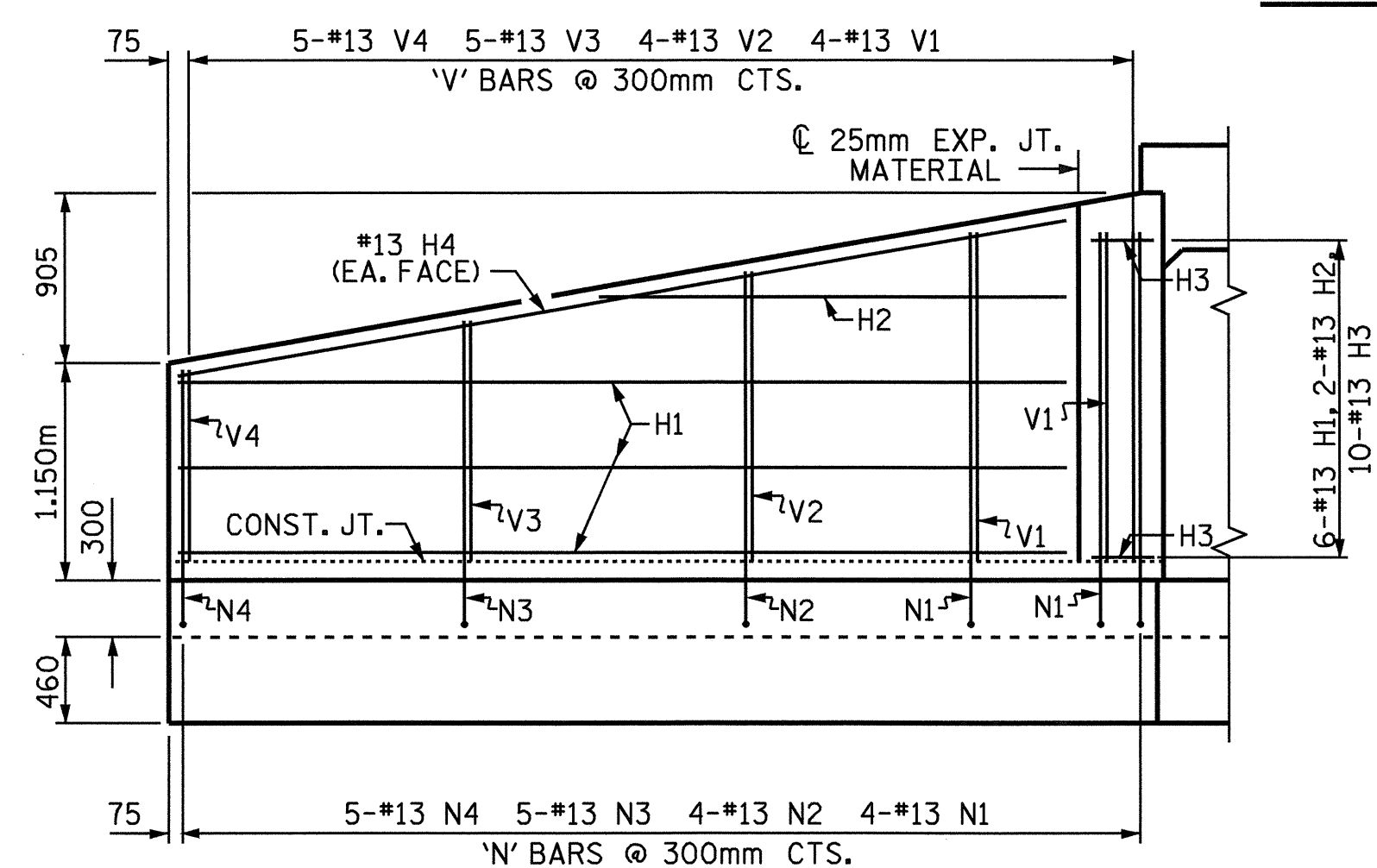
PLAN W2



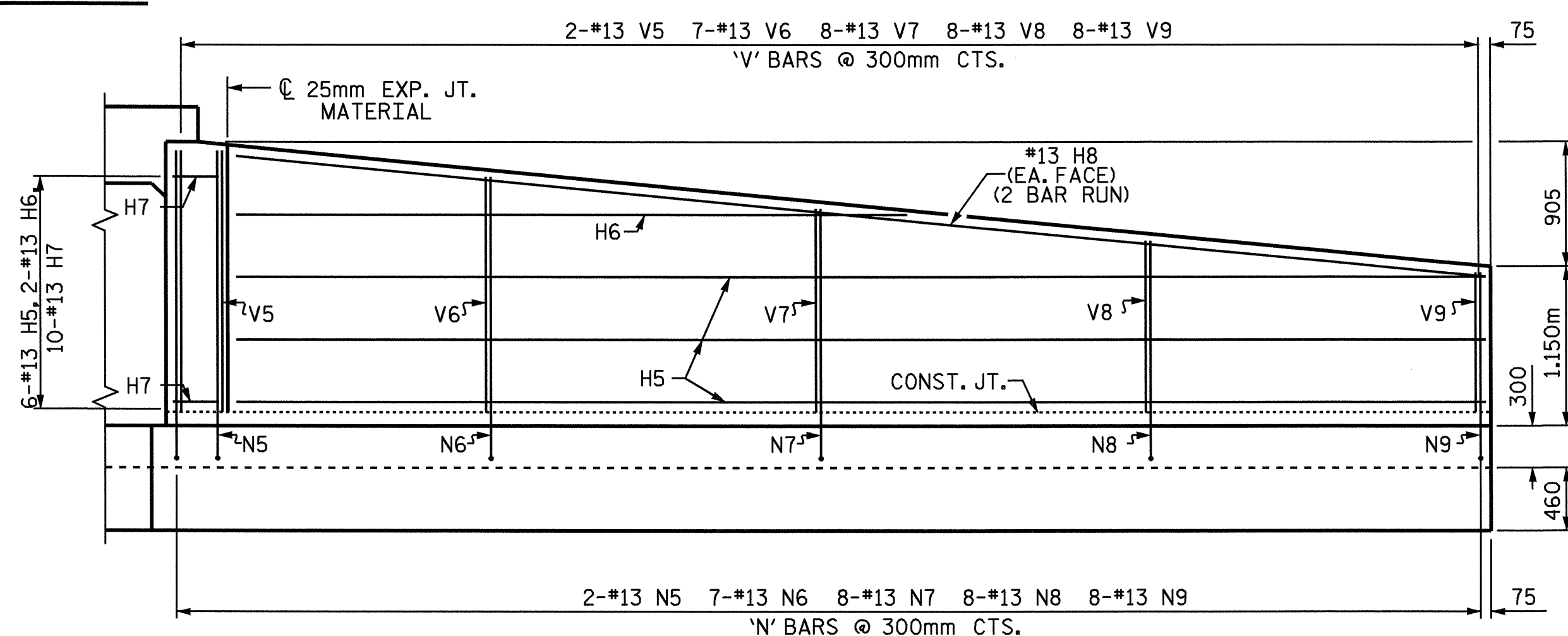
PLAN W1



TYPICAL WING SECTION



ELEVATION W2



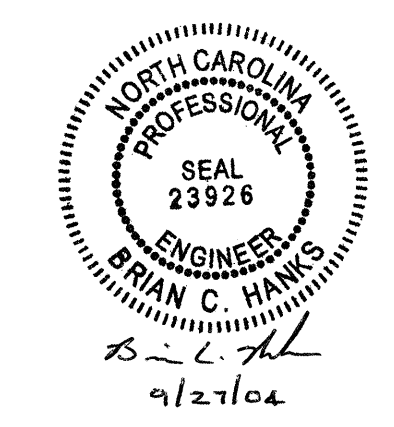
ELEVATION W1

BAR TYPE		BILL OF MATERIAL FOR LEFT EXTENSION WINGS				
NO.	DESCRIPTION	BAR NO.	SIZE	TYPE	LENGTH	WEIGHT
1		H1	#13	STR.	4720	28
		H2	#13	STR.	2480	5
		H3	#13	1	980	10
		H4	#13	STR.	4800	10
		H5	#13	STR.	9000	54
		H6	#13	STR.	4880	10
		H7	#13	2	980	10
		H8	#13	STR.	4900	19
2		N1	#13	3	2380	9
		N2	#13	3	2180	9
		N3	#13	3	1920	10
		N4	#13	3	1660	8
		N5	#13	3	2520	5
		N6	#13	3	2340	16
		N7	#13	3	2100	17
		N8	#13	3	1880	15
		N9	#13	3	1640	13
3		T1	#16	STR.	5300	25
		T2	#16	STR.	9640	45
		V1	#13	STR.	1740	7
		V2	#13	STR.	1540	6
		V3	#13	STR.	1260	6
		V4	#13	STR.	1000	5
		V5	#13	STR.	1880	4
		V6	#13	STR.	1700	12
		V7	#13	STR.	1460	12
		V8	#13	STR.	1240	10
		V9	#13	STR.	1000	8
		Z1	#13	4	1380	5
		Z2	#13	4	1240	5
		Z3	#13	4	1060	5
		Z4	#13	4	880	4
		Z5	#13	4	1360	8
		Z6	#13	4	1240	7
		Z7	#13	4	1140	7
		Z8	#13	4	1000	7
		Z9	#13	4	880	6
4		EPOXY COATED REINFORCING STEEL				
		2 WINGS 442 kgs				
		CLASS A CONCRETE				
		2 WINGS 12.9 m³				
		1 HEADWALL & 2 EDGE BEAMS 1.1 m³				
		1 END CURTAIN WALL 0.5 m³				
		TOTAL 14.5 m³				

ALL BAR DIMENSIONS ARE OUT TO OUT

PROJECT NO. R-2539C
 PAMLICO COUNTY
 STATION: 199+76.780 -L-

SHEET 4 OF 6
 DEPARTMENT OF TRANSPORTATION
 RALEIGH
 WINGS FOR
 CONCRETE BOX CULVERT
 H=1.800m 60° SKEW
 LEFT EXTENSION



REVISIONS						TOTAL SHEETS
NO.	BY:	DATE:	NO.	BY:	DATE:	C-13
1			3			20
2			4			

DRAWN BY: Keith D. Layne DATE: 01-08-04
 CHECKED BY: A. B. NAIK DATE: 2-25-04