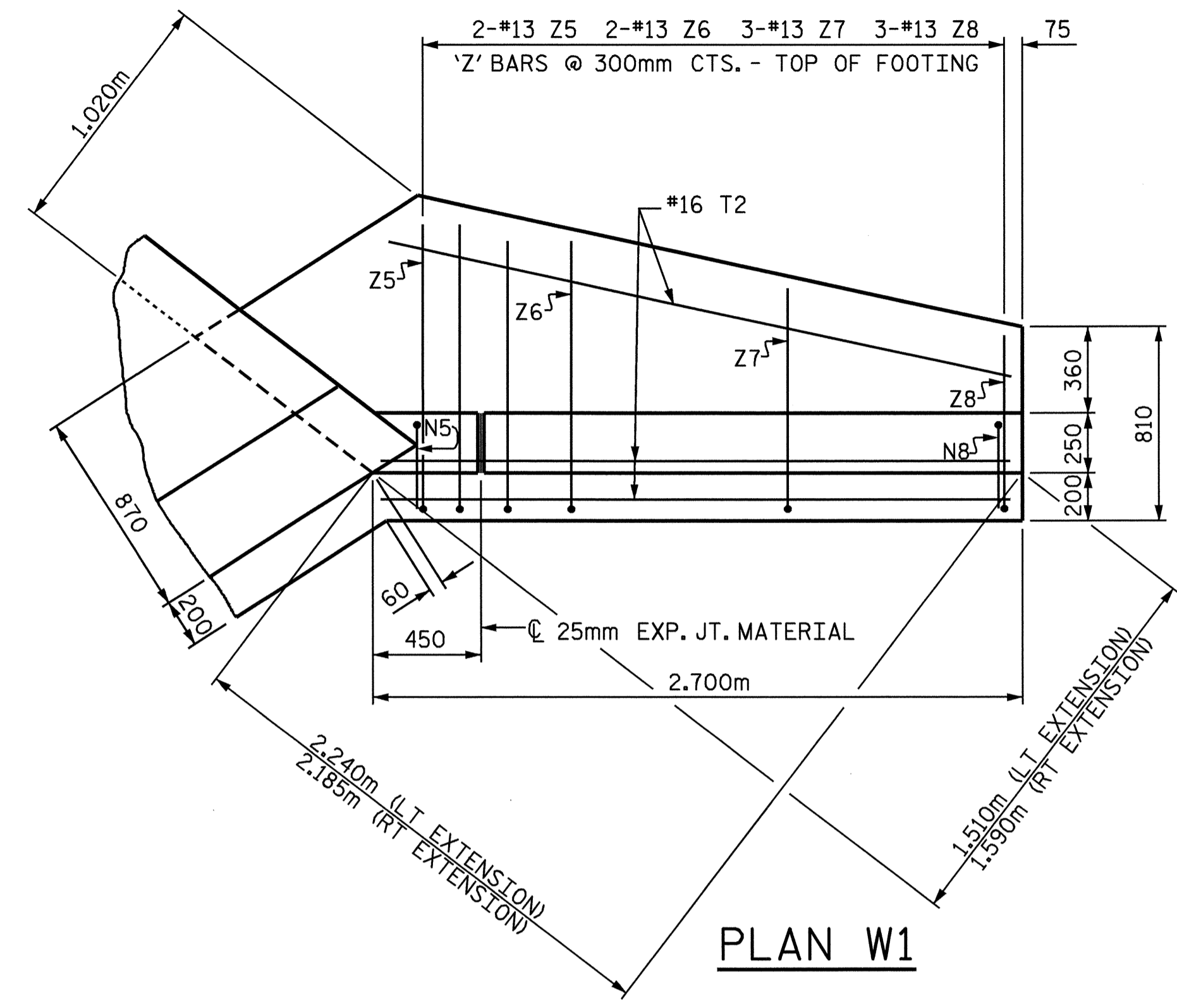
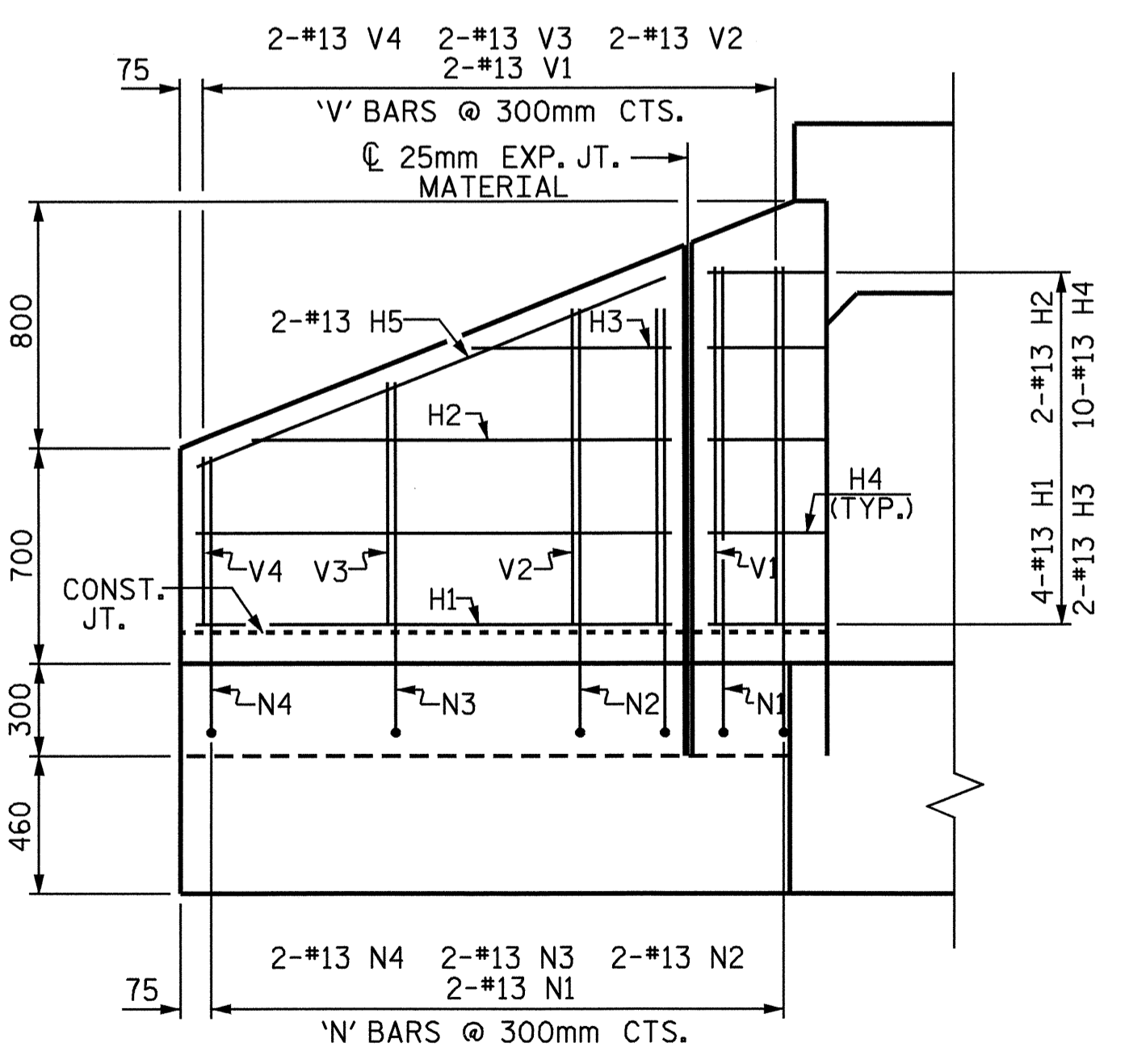


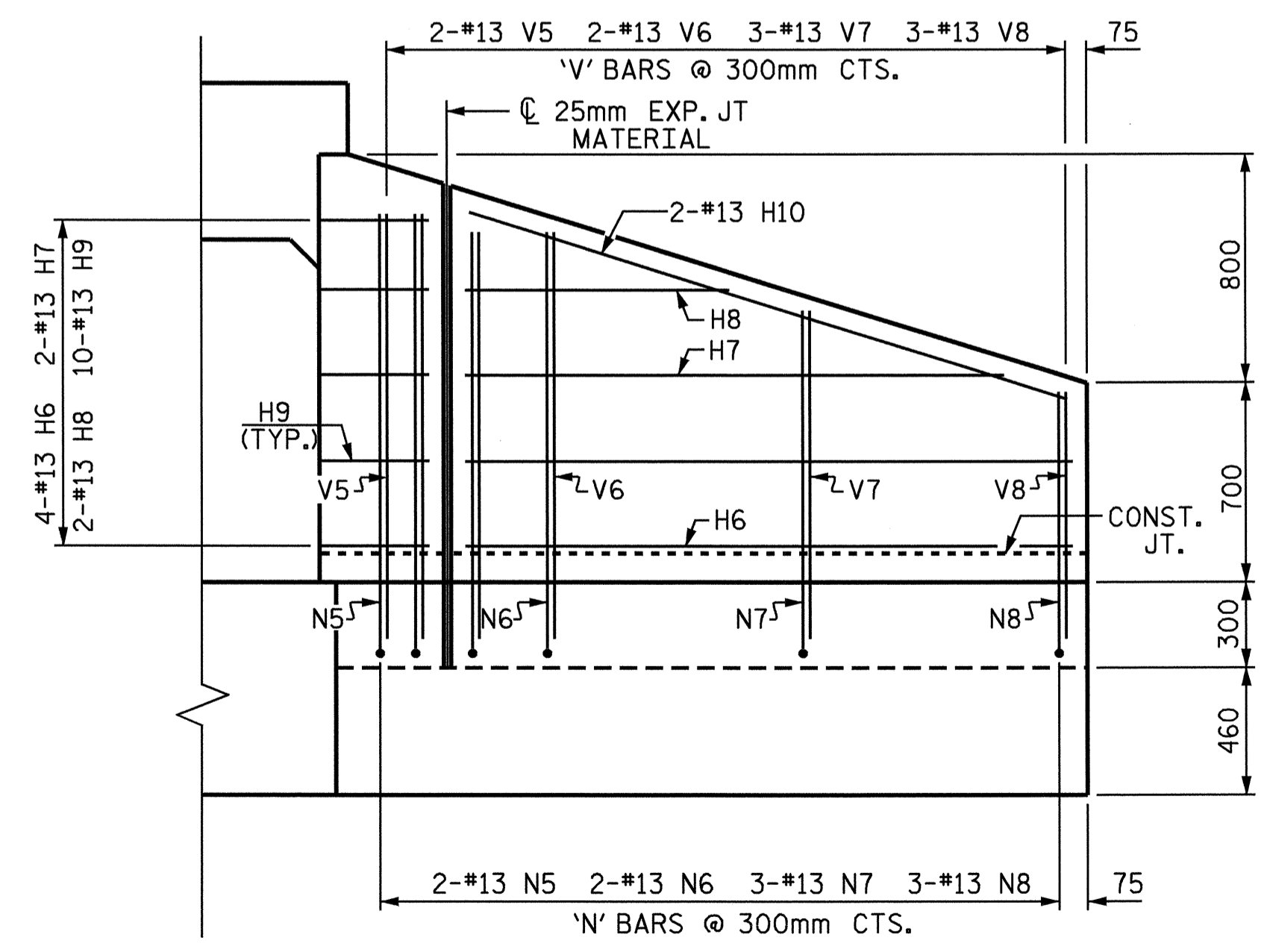
PLAN W2



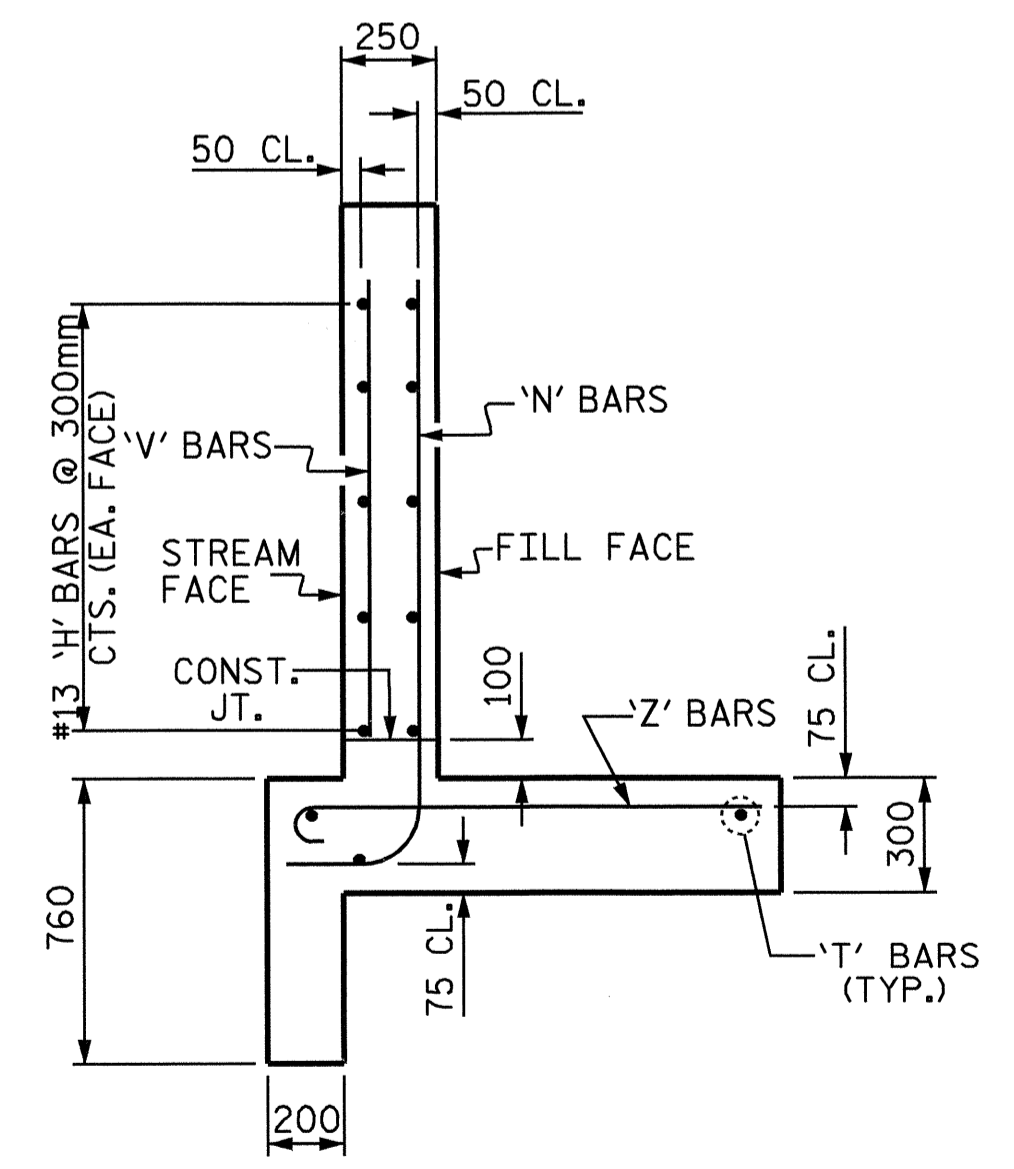
PLAN W1



ELEVATION W2



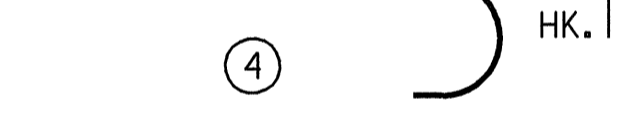
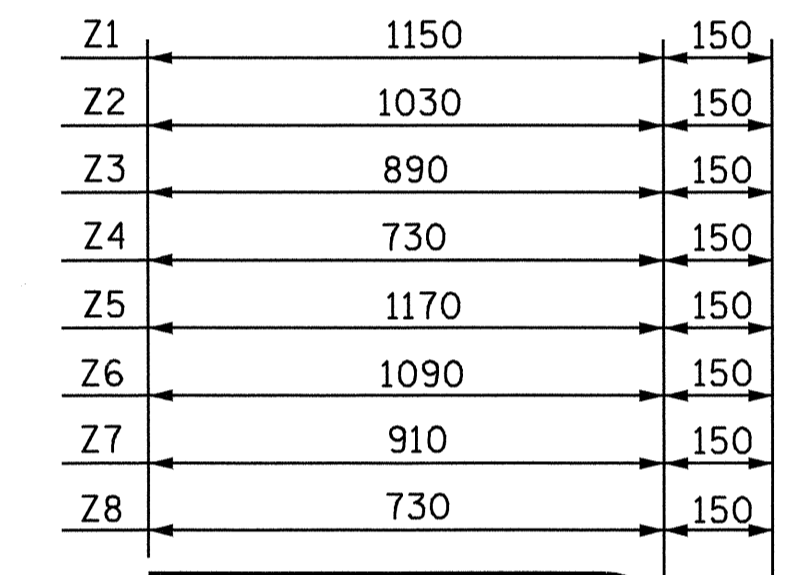
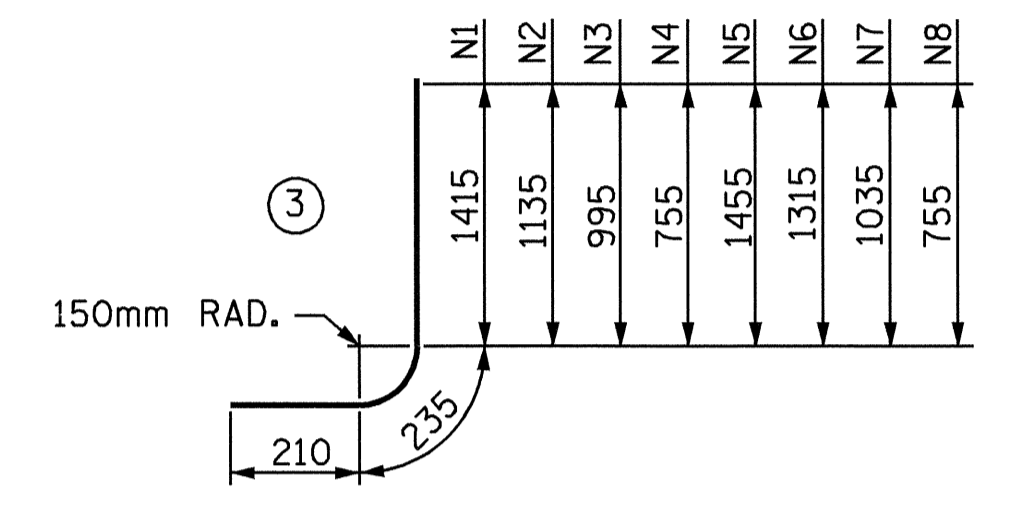
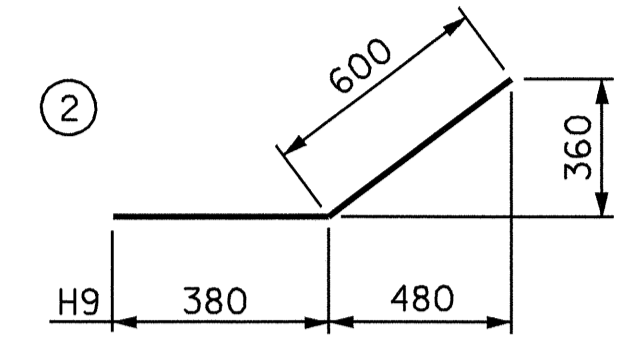
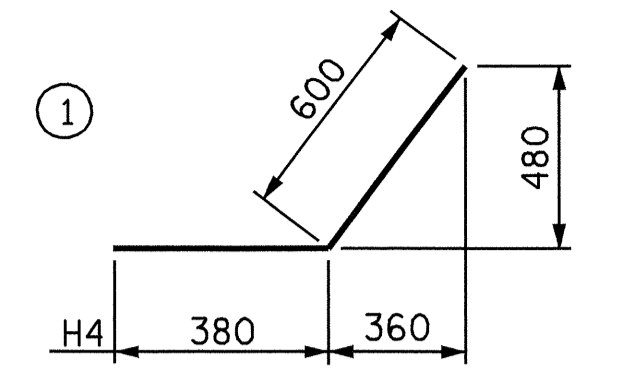
ELEVATION W1



TYPICAL WING SECTION

BAR TYPES

ALL BAR DIMENSIONS ARE OUT TO OUT.



BILL OF MATERIAL FOR LEFT AND RIGHT EXTENSION WINGS

| BAR | NO. | SIZE | TYPE | LENGTH | WEIGHT |
|-----|-----|------|------|--------|--------|
| H1 | 8 | 13 | STR | 1540 | 12 |
| H2 | 4 | 13 | STR | 1340 | 5 |
| H3 | 4 | 13 | STR | 600 | 2 |
| H4 | 20 | 13 | 1 | 980 | 20 |
| H5 | 4 | 13 | STR | 1640 | 7 |
| H6 | 8 | 13 | STR | 2140 | 17 |
| H7 | 4 | 13 | STR | 1900 | 8 |
| H8 | 4 | 13 | STR | 940 | 4 |
| H9 | 20 | 13 | 2 | 980 | 20 |
| H10 | 4 | 13 | STR | 2220 | 9 |
| N1 | 4 | 13 | 3 | 1860 | 7 |
| N2 | 4 | 13 | 3 | 1680 | 7 |
| N3 | 4 | 13 | 3 | 1440 | 6 |
| N4 | 4 | 13 | 3 | 1200 | 5 |
| N5 | 4 | 13 | 3 | 1900 | 8 |
| N6 | 4 | 13 | 3 | 1760 | 7 |
| N7 | 6 | 13 | 3 | 1480 | 9 |
| N8 | 6 | 13 | 3 | 1200 | 7 |
| T1 | 6 | 16 | STR | 2100 | 20 |
| T2 | 6 | 16 | STR | 2700 | 25 |
| V1 | 4 | 13 | STR | 1240 | 5 |
| V2 | 4 | 13 | STR | 1060 | 4 |
| V3 | 4 | 13 | STR | 820 | 3 |
| V4 | 4 | 13 | STR | 580 | 2 |
| V5 | 4 | 13 | STR | 1280 | 5 |
| V6 | 4 | 13 | STR | 1140 | 5 |
| V7 | 6 | 13 | STR | 860 | 5 |
| V8 | 6 | 13 | STR | 580 | 3 |
| Z1 | 4 | 13 | 4 | 1300 | 5 |
| Z2 | 4 | 13 | 4 | 1180 | 5 |
| Z3 | 4 | 13 | 4 | 1040 | 4 |
| Z4 | 4 | 13 | 4 | 880 | 3 |
| Z5 | 4 | 13 | 4 | 1320 | 5 |
| Z6 | 4 | 13 | 4 | 1240 | 5 |
| Z7 | 6 | 13 | 4 | 1060 | 6 |
| Z8 | 6 | 13 | 4 | 880 | 5 |

REINFORCING STEEL FOR 4 WING WALLS 275 kg

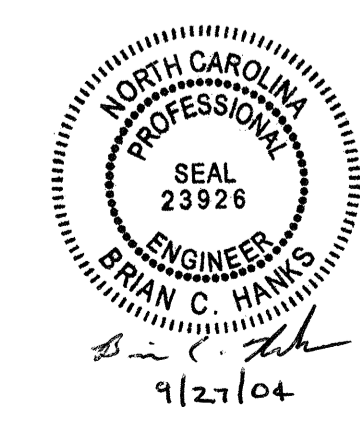
| | | |
|--------------------------|------------|----------------------|
| CLASS A CONCRETE 4 WINGS | 7.5 | m ³ |
| 2 HEADWALLS | 0.7 | m ³ |
| 2 END CURTAIN WALLS | 0.7 | m ³ |
| TOTAL | 8.9 | m³ |

PROJECT NO. R-2539C
PAMLICO COUNTY
 STATION: 206+01.869 -L-

SHEET 5 OF 5

STATE OF NORTH CAROLINA
 DEPARTMENT OF TRANSPORTATION
 RALEIGH

WINGS FOR CONCRETE BOX CULVERT H=1.200m
 112° SKEW LEFT EXTENSION
 108° SKEW RIGHT EXTENSION



ASSEMBLED BY : KEITH D. LAYNE DATE : 01-13-04
 CHECKED BY : A. B. NAIK DATE : 02-26-04
 DRAWN BY : JLR 6/97
 CHECKED BY : VAP 12/97

FOR WING ORIENTATION, SEE BARREL STANDARD SHEET.

| REVISIONS | | | | | SHEET NO. |
|-----------|-----|-------|-----|-----|-----------|
| NO. | BY: | DATE: | NO. | BY: | DATE: |
| 1 | | | 3 | | |
| 2 | | | 4 | | |

TOTAL SHEETS 20