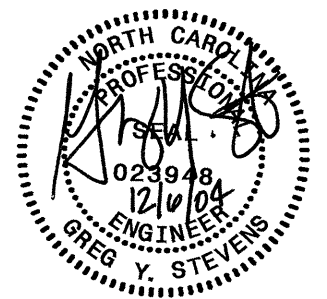


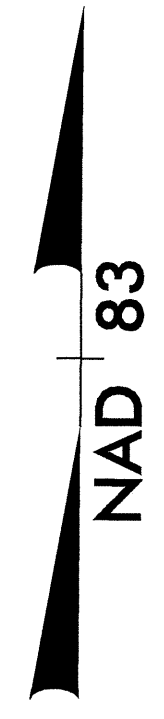
PROJECT REFERENCE NO.	SHEET NO.
<b>B-3682 &amp; W-3413</b>	<b>UC-2</b>
DESIGNED BY: VM	
DRAWN BY: VM	
CHECKED BY: GYS	
APPROVED BY: GYS	
REVISED:	
NORTH CAROLINA DEPARTMENT OF TRANSPORTATION PROJECT SERVICES UNIT PHONE: (919) 250-4128 FAX: (919) 250-4119	
UTILITY CONSTRUCTION PLANS ONLY	

 PROP. PAINTED ISLAND.  
 SEE TRAFFIC CONTROL PLANS

**UTILITY CONSTRUCTION**

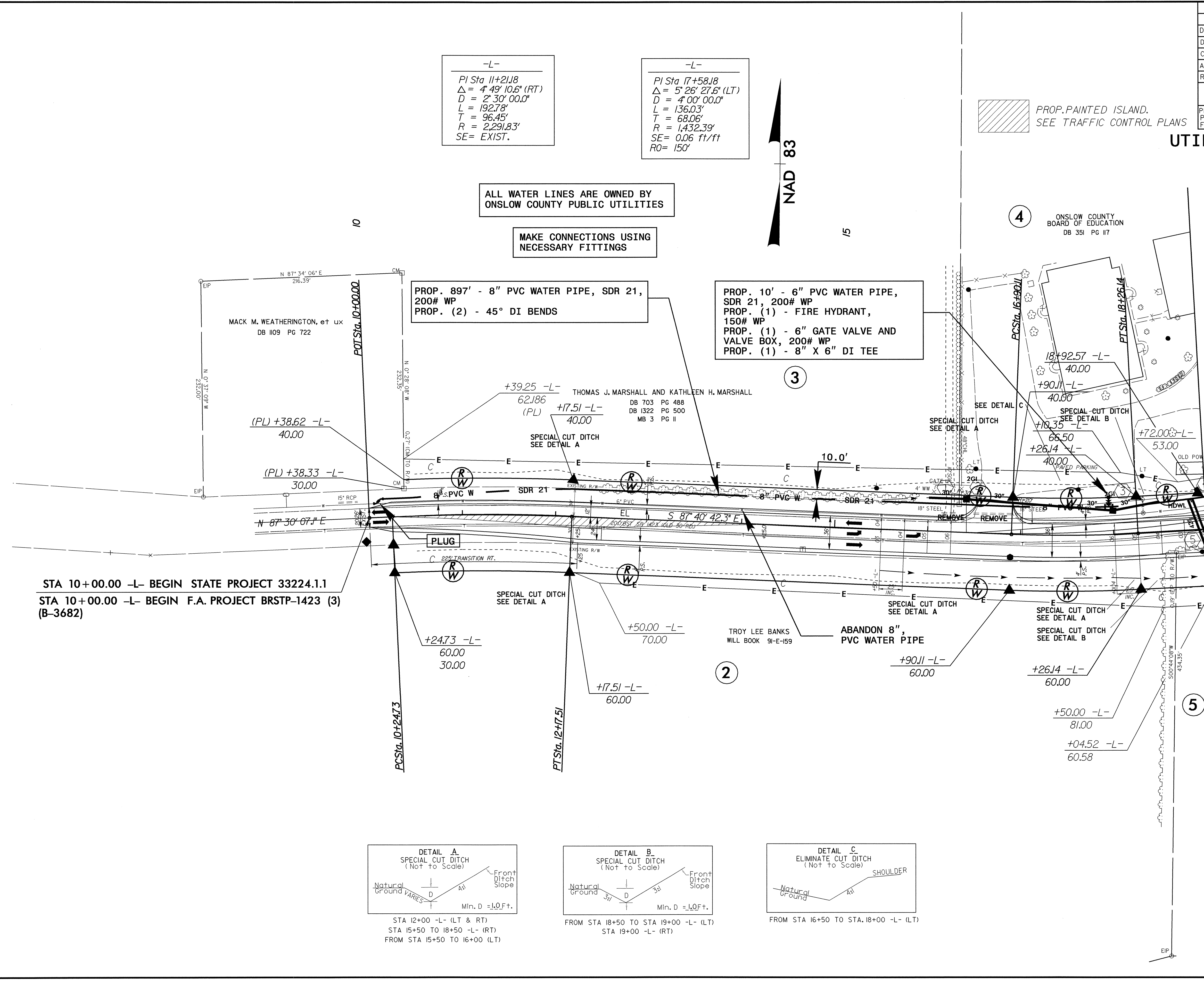
-L-  
 PI Sta 11+21.18  
 $\Delta = 4' 49" 10.6" (RT)$   
 $D = 2' 30" 00.0"$   
 $L = 192.78'$   
 $T = 96.45'$   
 $R = 2,291.83'$   
 SE = EXIST.

-L-  
 PI Sta 17+58.18  
 $\Delta = 5' 26' 27.6" (LT)$   
 $D = 4' 00" 00.0"$   
 $L = 136.03'$   
 $T = 68.06'$   
 $R = 1,432.39'$   
 $SE = 0.06 \text{ ft/ft}$   
 $RO = 150'$



ALL WATER LINES ARE OWNED BY  
 ONSLOW COUNTY PUBLIC UTILITIES

MAKE CONNECTIONS USING  
 NECESSARY FITTINGS

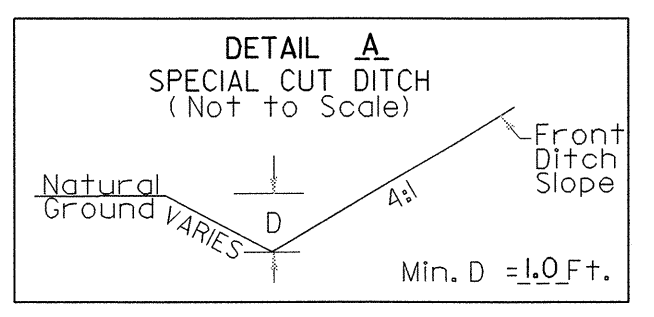


PROP. 897' - 8" PVC WATER PIPE, SDR 21,  
 200# WP  
 PROP. (2) - 45° DI BENDS

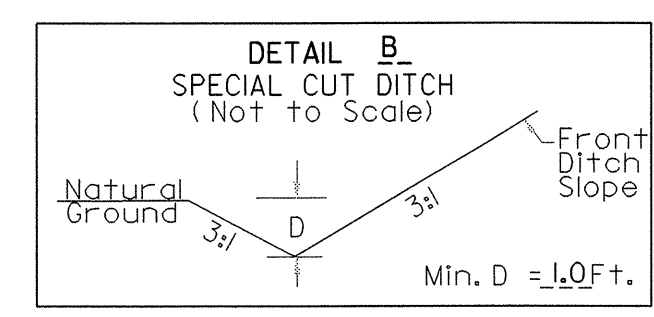
PROP. 10' - 6" PVC WATER PIPE,  
 SDR 21, 200# WP  
 PROP. (1) - FIRE HYDRANT,  
 150# WP  
 PROP. (1) - 6" GATE VALVE AND  
 VALVE BOX, 200# WP  
 PROP. (1) - 8" X 6" DI TEE

STA 10+00.00 -L- BEGIN STATE PROJECT 33224.1.1  
 STA 10+00.00 -L- BEGIN F.A. PROJECT BRSTP-1423 (3)  
 (B-3682)

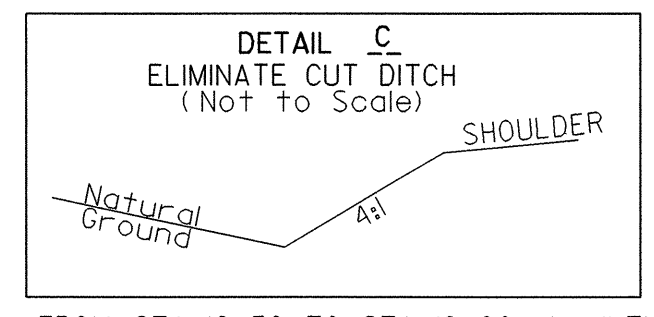
MATCHLINE -L- 19+00.00 SEE SHEET UC-3



STA 12+00 -L- (LT & RT)  
 STA 15+50 TO 18+50 -L- (RT)  
 FROM STA 15+50 TO 16+00 (LT)



FROM STA 18+50 TO STA 19+00 -L- (LT)  
 STA 19+00 -L- (RT)



FROM STA 16+50 TO STA 18+00 -L- (LT)

8/17/99  
 05-DEC-2004 07:59 AM P:\proj\B3682 UC\B3682.ut\_UC\_Rdwj04\_UC02.psh  
 V:\proj\B3682 UC\B3682.ut\_UC\_Rdwj04\_UC02.psh