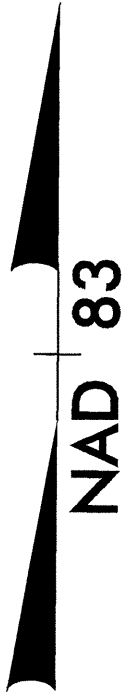


UTILITIES BY OTHERS

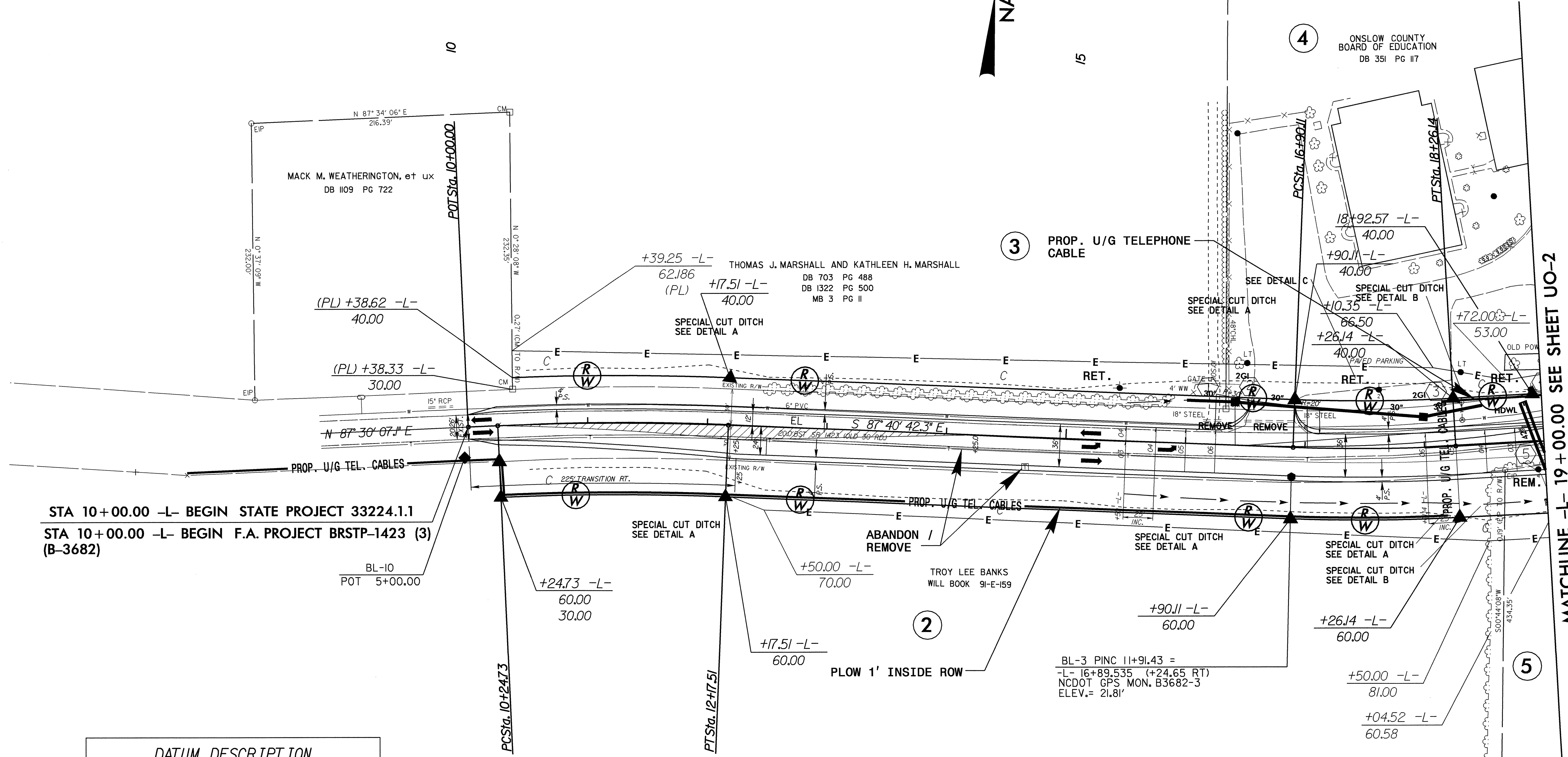
NOTE:
ALL PROPOSED UTILITY WORK
SHOWN ON THIS SHEET WILL
BE DONE BY OTHERS

-L-
PI Sta 11+211.8
Δ = 4' 49" 10.6" (RT)
D = 2' 30" 00.0"
L = 192.78'
T = 96.45'
R = 2,291.83'
SE = EXIST.

-L-
PI Sta 17+58.18
Δ = 5' 26" 27.6" (LT)
D = 4' 00" 00.0"
L = 136.03'
T = 68.06'
R = 1,432.39'
SE = 0.06 ft/ft
RO = 150'



PROP. PAINTED ISLAND.
SEE TRAFFIC CONTROL PLANS



STA 10+00.00 -L- BEGIN STATE PROJECT 33224.1.1
STA 10+00.00 -L- BEGIN F.A. PROJECT BRSTP-1423 (3)
(B-3682)

DATUM DESCRIPTION
THE LOCALIZED COORDINATE SYSTEM DEVELOPED FOR THIS PROJECT IS BASED ON THE STATE PLANE COORDINATES ESTABLISHED BY NCDOT FOR MONUMENT "B3682-3"
WITH NAD 83 STATE PLANE GRID COORDINATES OF
NORTHING: 375074.1570(1) EASTING: 2507482.8440(1)
THE AVERAGE COMBINED GRID FACTOR USED ON THIS PROJECT (ROUND TO GRID) IS: 0.999921278
THE N.C. LAMBERT GRID BEARING AND LOCALIZED HORIZONTAL GROUND DISTANCE FROM "B3682-3" TO -L- STA 10+00.00 IS
N 86° 28' 31.39" W DISTANCE 689.3727 FEET
ALL LINEAR DIMENSIONS ARE LOCALIZED HORIZONTAL DISTANCES
VERTICAL DATUM USED IS NGVD 29

8/17/99
07-DEC-2004 12:41
R:\Utilities\tdy\Uo\Proj\B3682-ut_UC_Rdky04_U001.psh
vmmvb AI 0521226