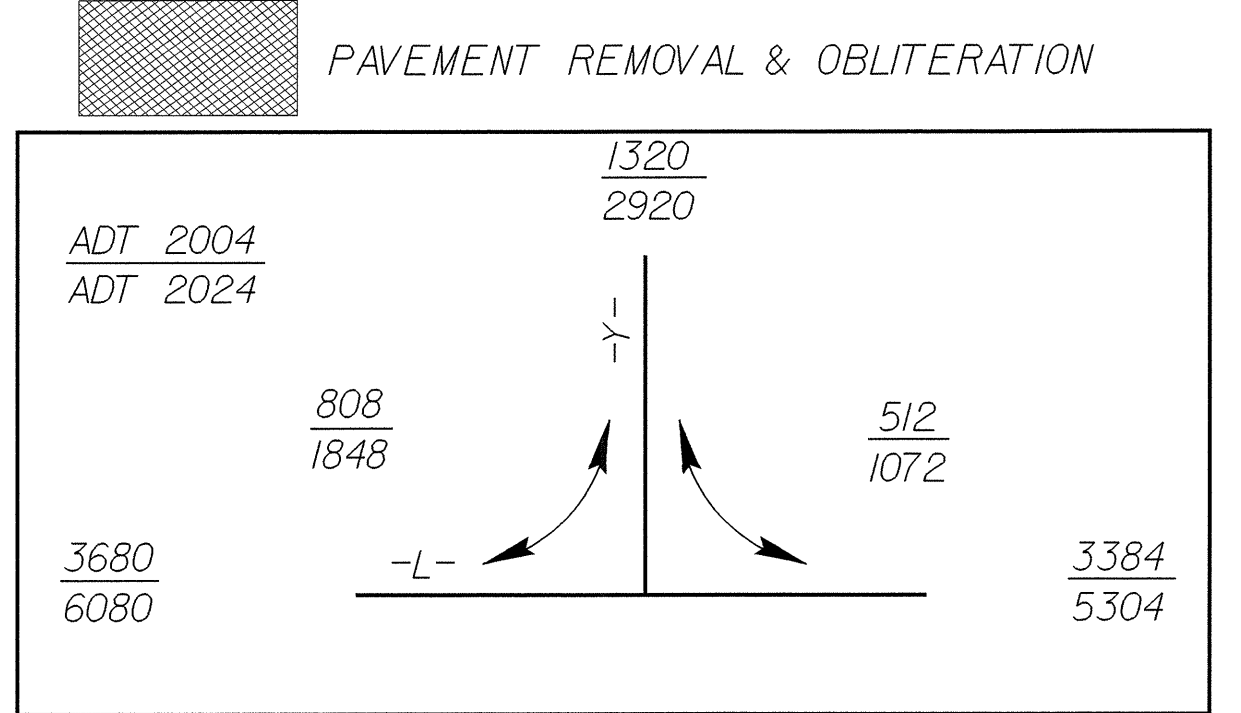
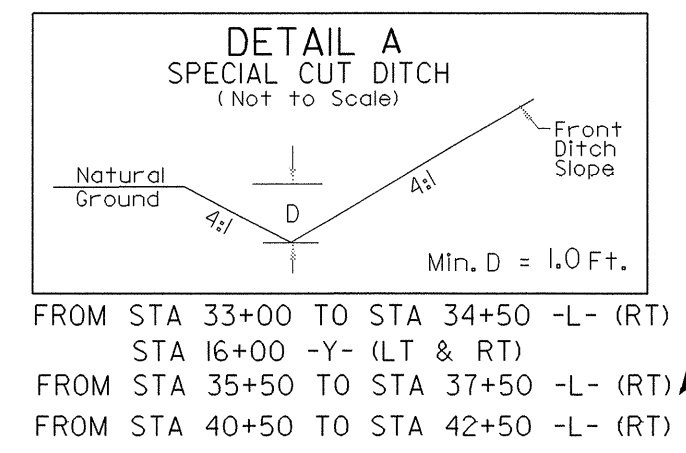
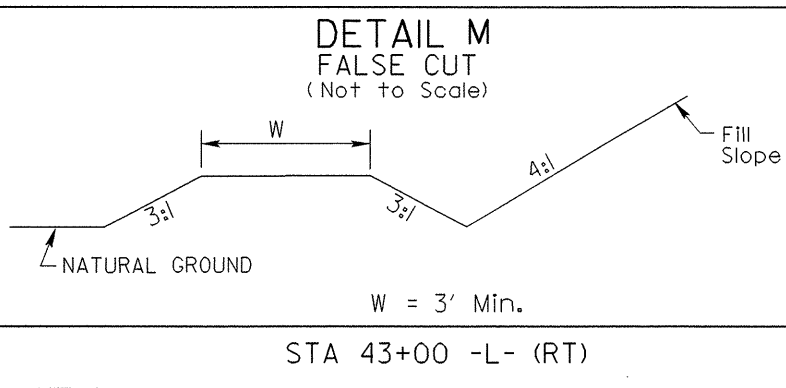
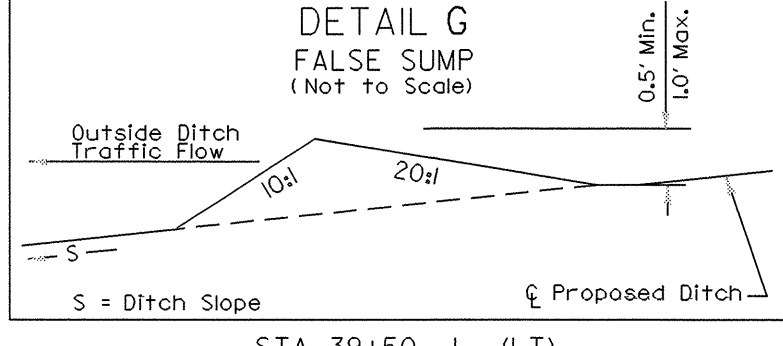
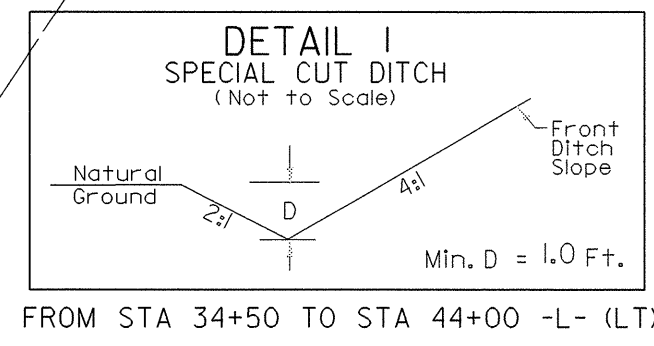
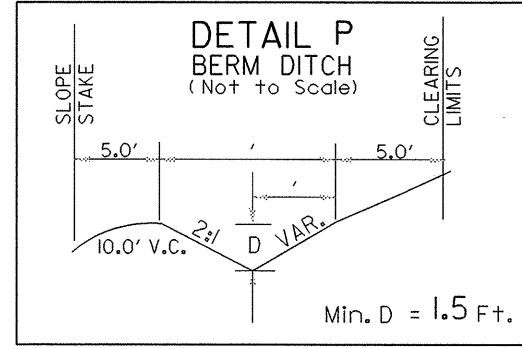


PROJECT REFERENCE NO. B-3682 & W-3413		SHEET NO. 6
RW SHEET NO.		
ROADWAY DESIGN ENGINEER NORTH CAROLINA PROFESSIONAL SEAL 14493 J. J. [Signature]	HYDRAULICS ENGINEER NORTH CAROLINA PROFESSIONAL SEAL 022893 [Signature]	

-L-
PI Sta 32+68.15
Δ = 6° 54' 30.9" (LT)
D = 4' 00' 00.0"
L = 172.71'
T = 86.46'
R = 1,432.39'
SE = SEE PLANS

-Y-
PI Sta 14+72.74
Δ = 39° 04' 40.0" (LT)
D = 17' 30' 00.0"
L = 223.30'
T = 116.19'
R = 327.40'
SE = SEE PLANS

-L-
PI Sta 38+39.63
Δ = 13° 11' 28.9" (RT)
D = 3' 00' 00.0"
L = 439.71'
T = 220.83'
R = 1,909.86'
SE = SEE PLANS

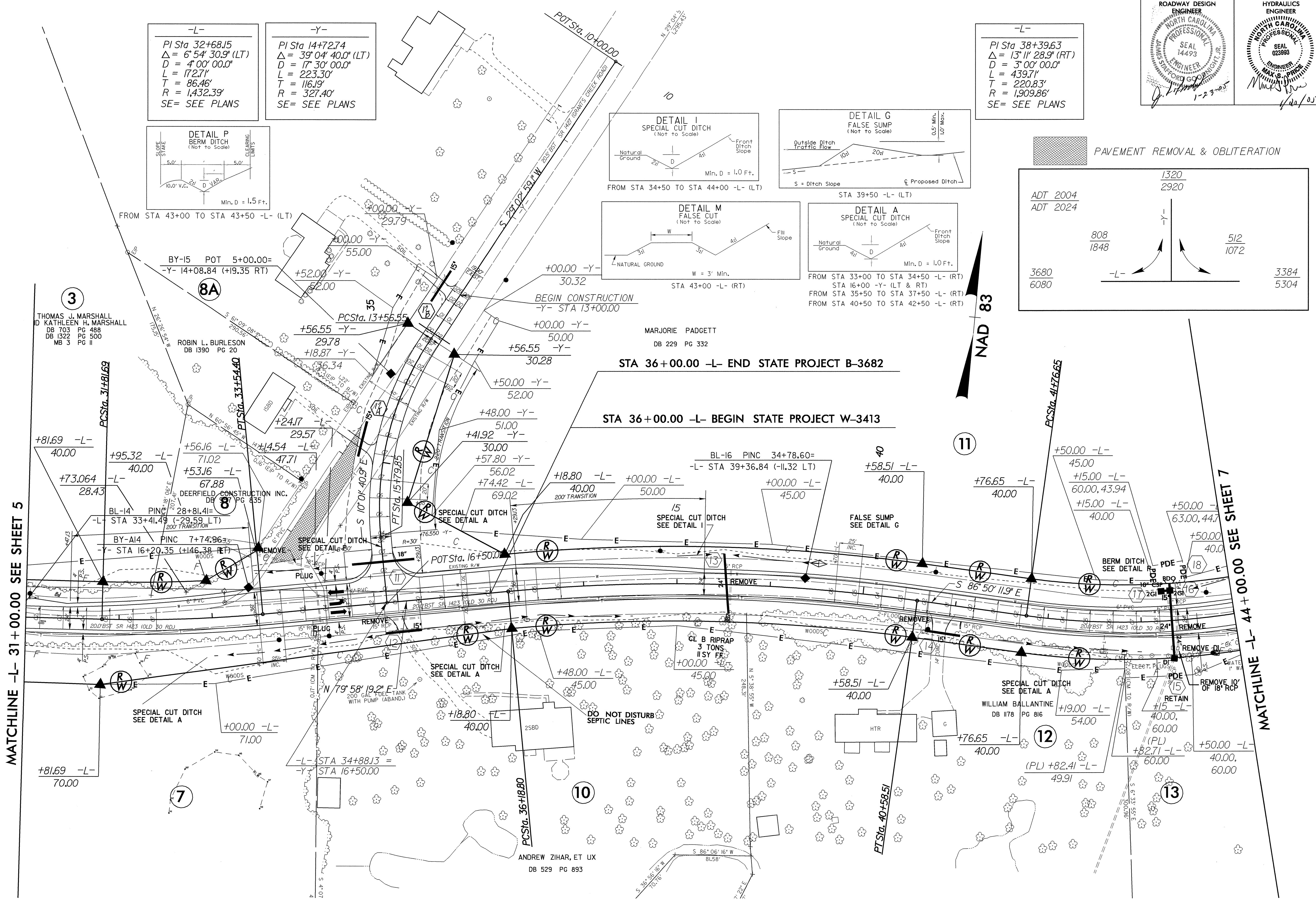


MATCHLINE -L- 31+00.00 SEE SHEET 5

MATCHLINE -L- 44+00.00 SEE SHEET 7

8/17/99

REVISIONS



See sheet 12, 13 for -L- Profile
See sheet 16, for -Y- Profile