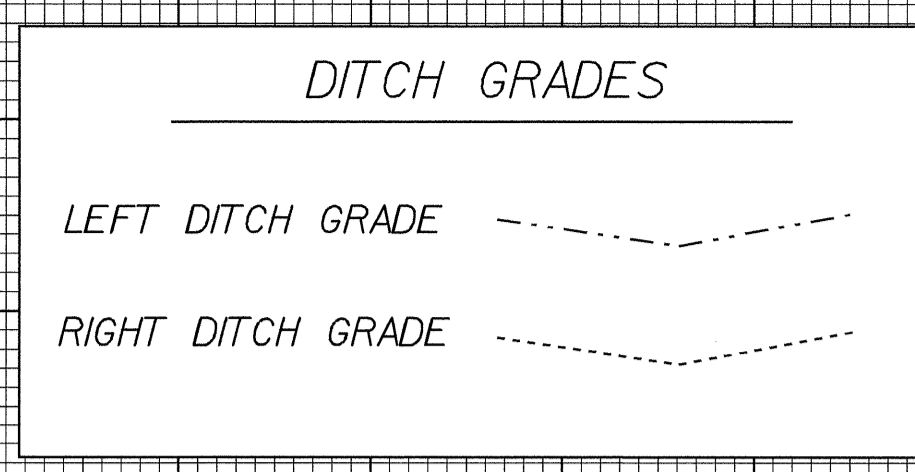


5/28/99

PROJECT REFERENCE NO. B-3682 & W-3413	SHEET NO. 13
ROADWAY DESIGN ENGINEER NORTH CAROLINA PROFESSIONAL ENGINEER SEAL 14493 J. J. [Signature]	HYDRAULICS ENGINEER NORTH CAROLINA PROFESSIONAL ENGINEER SEAL 023993 M. S. [Signature]

PIPE HYDRAULIC DATA
DRAINAGE STRUCTURE NO.13

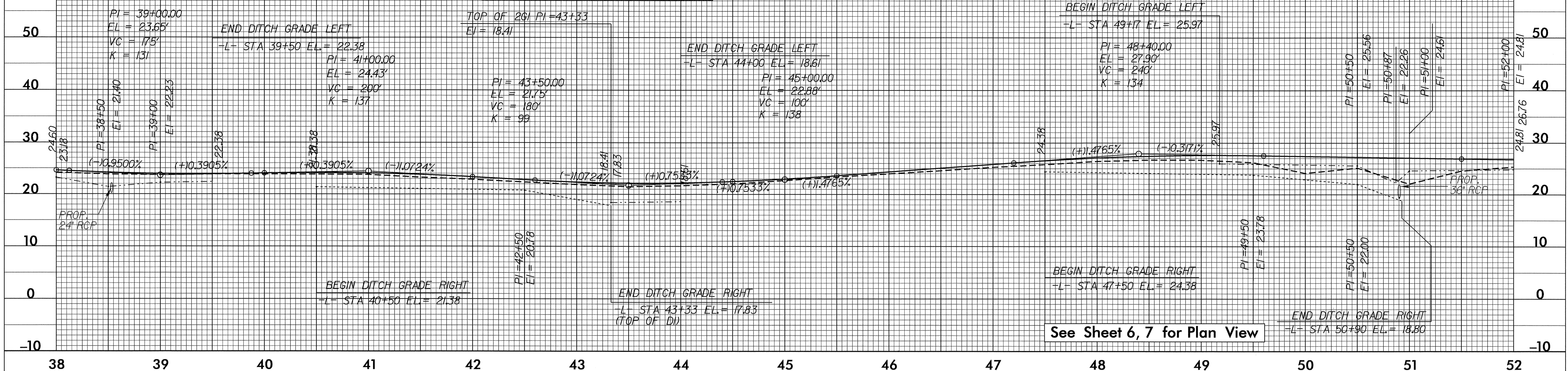
DRAINAGE AREA	= 8.0	AC
DESIGN FREQUENCY	= 25	YRS
DESIGN DISCHARGE	= 11.0	CFS
DESIGN HW ELEVATION	= 23.2	FT
100 YEAR DISCHARGE	= 18.0	CFS
100 YEAR HW ELEVATION	= 24.1	FT
OVERTOPPING FREQUENCY	= 25+	YRS
OVERTOPPING DISCHARGE	= 13.0	CFS
OVERTOPPING ELEVATION	= 23.4	FT



PIPE HYDRAULIC DATA
DRAINAGE STRUCTURE NO.21

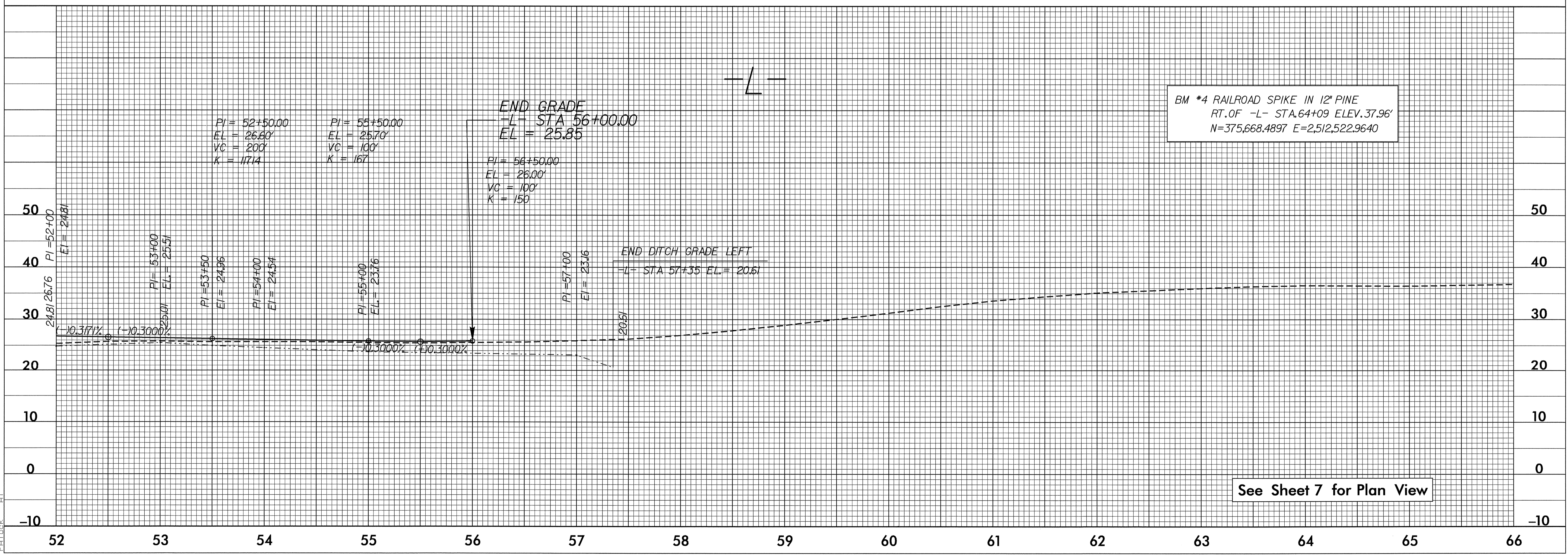
DRAINAGE AREA	= 11.0	AC
DESIGN FREQUENCY	= 25.0	YRS
DESIGN DISCHARGE	= 15.0	CFS
DESIGN HW ELEVATION	= 24.5	FT
100 YEAR DISCHARGE	= 24.0	CFS
100 YEAR HW ELEVATION	= 26.0	FT
OVERTOPPING FREQUENCY	= 50	YRS
OVERTOPPING DISCHARGE	= 19.0	CFS
OVERTOPPING ELEVATION	= 25.0	FT

BM *3 RAILROAD SPIKE IN 2" OAK
RT.OF -L- STA.43+15 ELEV.28.72'
N=375,412.8349 E=2,510,559.3595



See Sheet 6, 7 for Plan View

END DITCH GRADE RIGHT
-L- STA 50+90 EL= 18.80



See Sheet 7 for Plan View

BM *4 RAILROAD SPIKE IN 12" PINE
RT.OF -L- STA.64+09 ELEV.37.96'
N=375,668.4897 E=2,512,522.9640

14-JAN-2005 09:40
F:\pro\063682.dwg
A