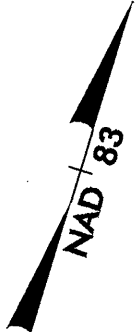


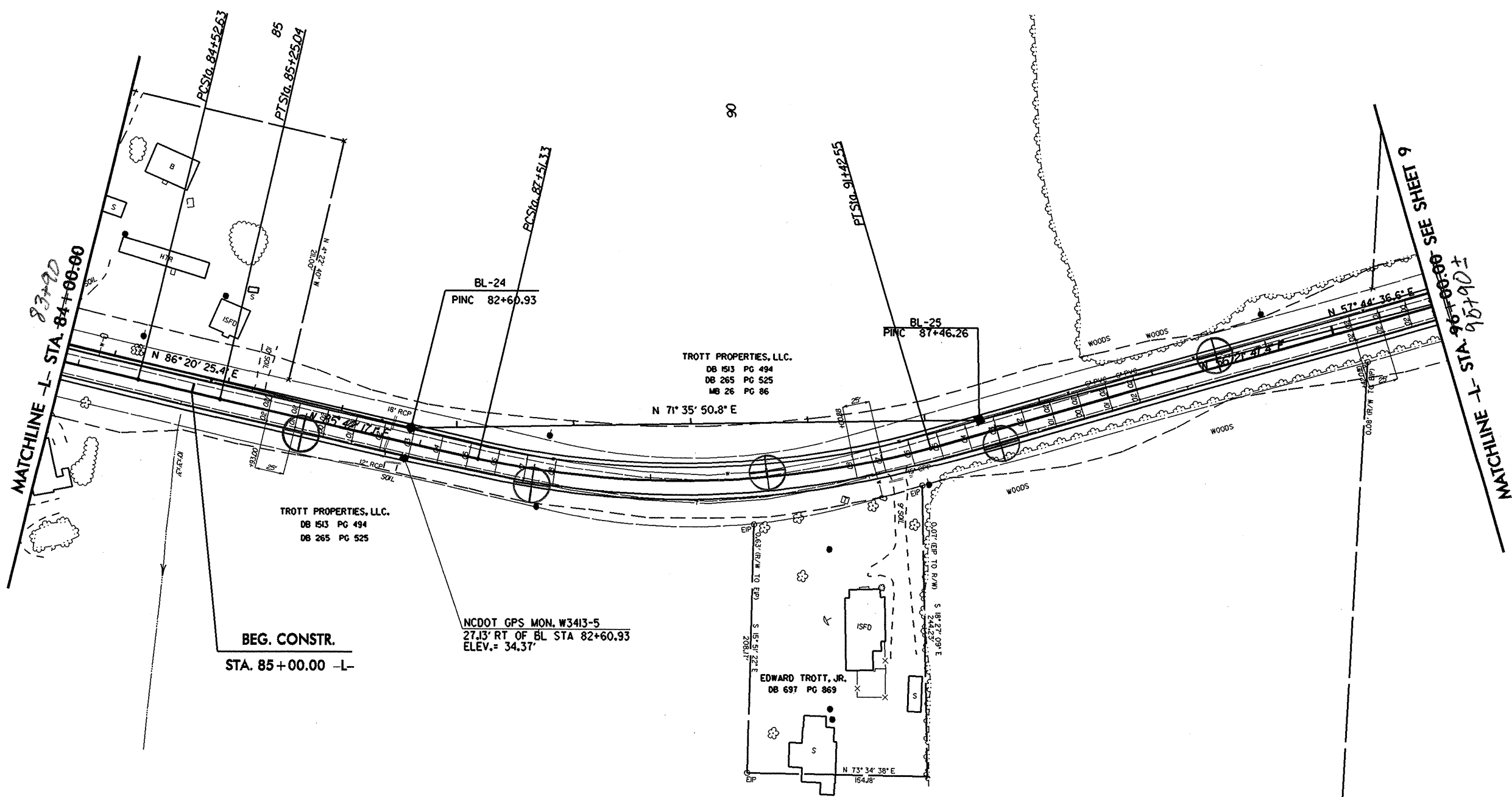
PROJECT REFERENCE NO. B-3682 & W-3413	SHEET NO. 8
R/W SHEET NO.	
ROADWAY DESIGN ENGINEER	HYDRAULICS ENGINEER
<b>INCOMPLETE PLANS</b> DO NOT USE FOR R/W ACQUISITION <b>PRELIMINARY PLANS</b> DO NOT USE FOR CONSTRUCTION	

-L-  
 PI Sta 84+88.84  
 $\Delta = 0^{\circ} 43' 26.8" (LT)$   
 $D = 1^{\circ} 00' 00.0"$   
 $L = 72.4'$   
 $T = 36.2'$   
 $R = 5729.58'$

-L-  
 PI Sta 89+51.33  
 $\Delta = 29^{\circ} 20' 29.7" (LT)$   
 $D = 7^{\circ} 30' 00.0"$   
 $L = 391.22'$   
 $T = 200.00'$   
 $R = 763.94'$   
 $SU = 0.08 \text{ FT/FT}$   
 $RO = 200'$



REVISIONS



8/17/99

\*\*\*\*\*  
 SYSTEMS DESIGN  
 \*\*\*\*\*

PT 08  
 3 1/2" 24" PT S