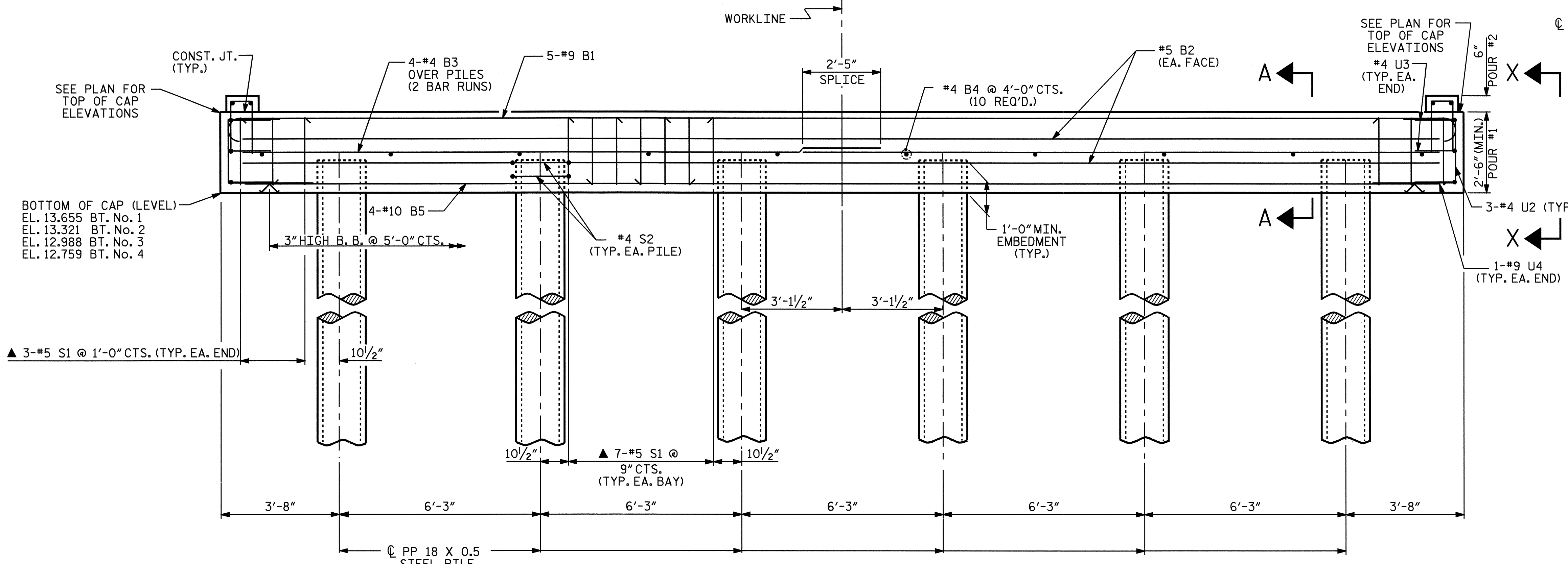


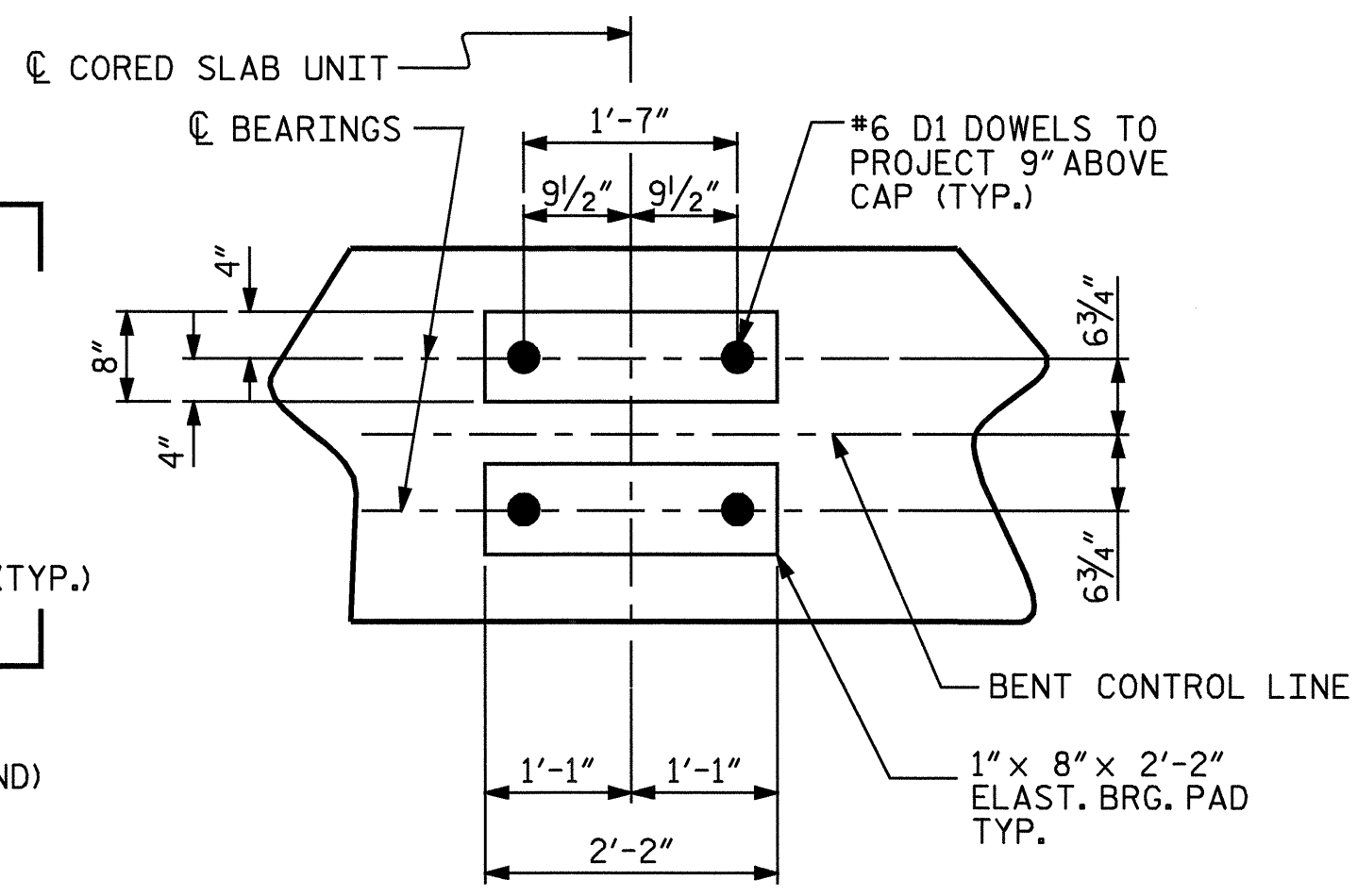
PLAN

NOTES:

STIRRUPS IN CAP MAY BE SHIFTED AS NECESSARY TO CLEAR DOWELS.
 THE 18" STEEL PIPE PILES SHALL HAVE A WALL THICKNESS OF 1/2" AND SHALL BE CLOSED ENDED.
 THE LATERAL GUIDES ARE NOT TO BE POURED UNTIL THE CORED SLAB UNITS ARE IN PLACE.
 ▲ INVERT ALTERNATE STIRRUPS AS SHOWN.
 FOR LATERAL GUIDE DETAILS, SEE SHEET 2 OF 3.



ELEVATION



DETAIL "A"

(DIMENSIONS ARE TYPICAL EACH BENT)

BOTTOM OF CAP (LEVEL)
 EL. 13.655 BT. No. 1
 EL. 13.321 BT. No. 2
 EL. 12.988 BT. No. 3
 EL. 12.759 BT. No. 4

PROJECT NO. B-3682
ONSLow COUNTY
 STATION: 27+84.47 -L-

SHEET 1 OF 3

TOP OF CAP ELEVATIONS				
	BENT 1	BENT 2	BENT 3	BENT 4
A	16.171	15.850	15.517	15.275
B	16.155	15.821	15.488	15.259
C	16.155	15.821	15.488	15.259

STATE OF NORTH CAROLINA
 DEPARTMENT OF TRANSPORTATION
 RALEIGH
 SUBSTRUCTURE
 BENT No. 1, 2, 3, & 4



REVISIONS						SHEET NO.
NO.	BY:	DATE:	NO.	BY:	DATE:	S-18
1			3			TOTAL SHEETS
2			4			26

DRAWN BY: R. G. EMERSON DATE: 06/04
 CHECKED BY: S. B. WILLIAMS DATE: 06/04