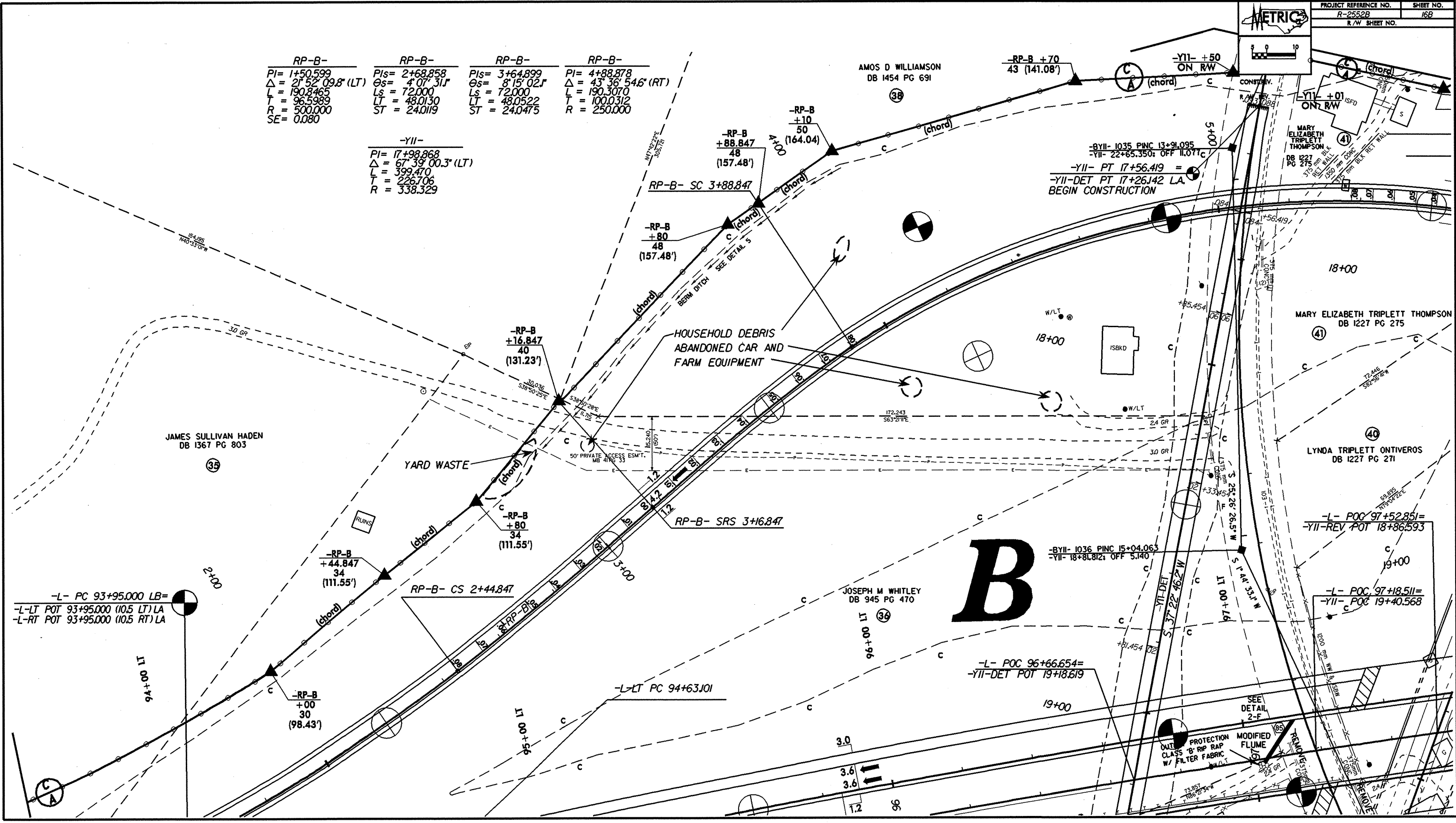


RP-B-	RP-B-	RP-B-	RP-B-
PI= 1+50.599	PIs= 2+68.858	PIs= 3+64.899	PI= 4+88.878
$\Delta = 21^{\circ} 52' 09.8" (LT)$	$\Theta s = 4^{\circ} 07' 31"$	$\Theta s = 8^{\circ} 15' 02"$	$\Delta = 43^{\circ} 36' 54.6" (RT)$
L = 190.3465	Ls = 72.000	Ls = 72.000	L = 190.3070
T = 96.5989	LT = 48.0130	LT = 48.0522	T = 100.0312
R = 500.000	ST = 24.0119	ST = 24.0475	R = 250.000
SE = 0.080			

-YII-
PI= 17+98.868
$\Delta = 67^{\circ} 39' 00.3" (LT)$
L = 399.470
T = 226.706
R = 338.329



B