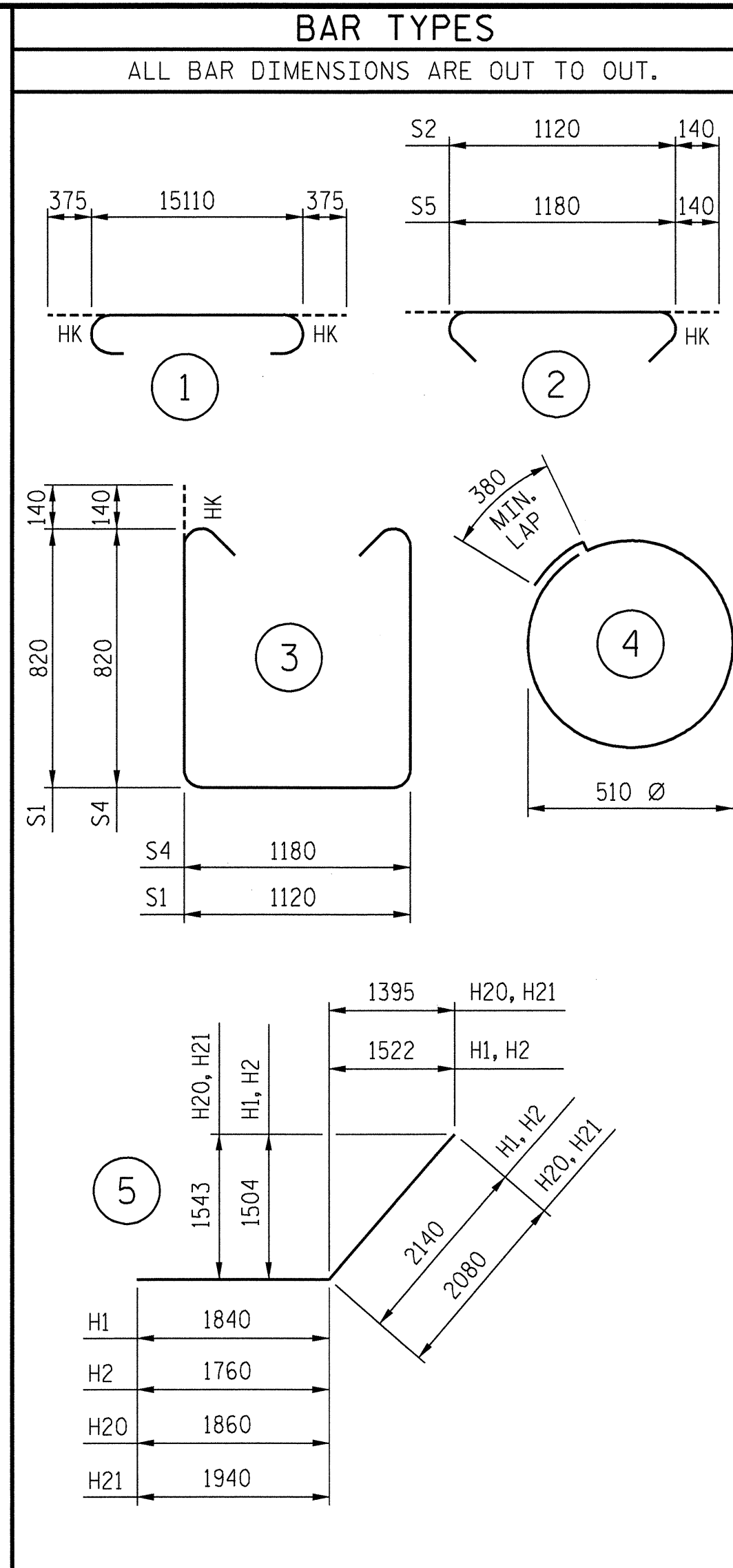
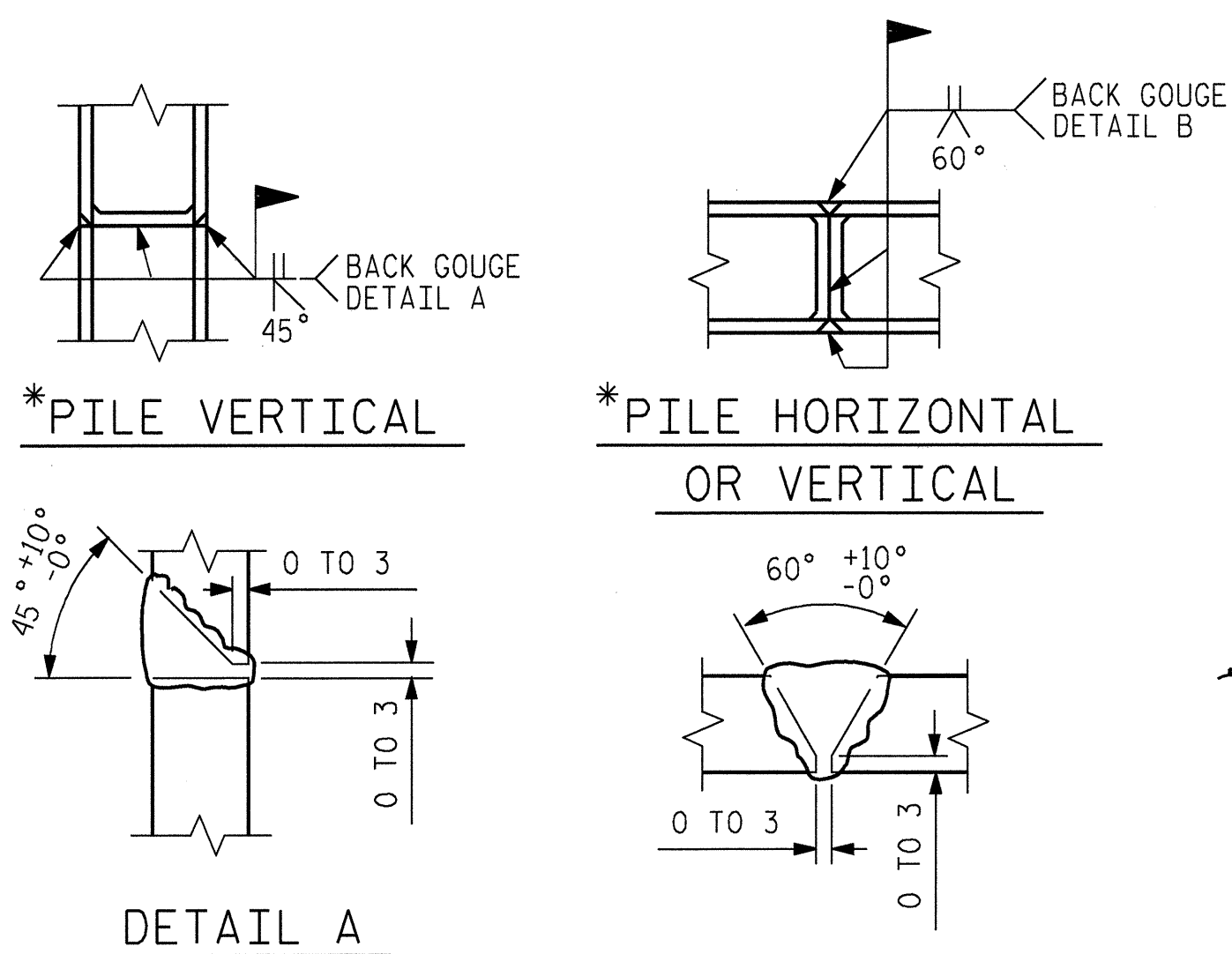


SECTION A-A



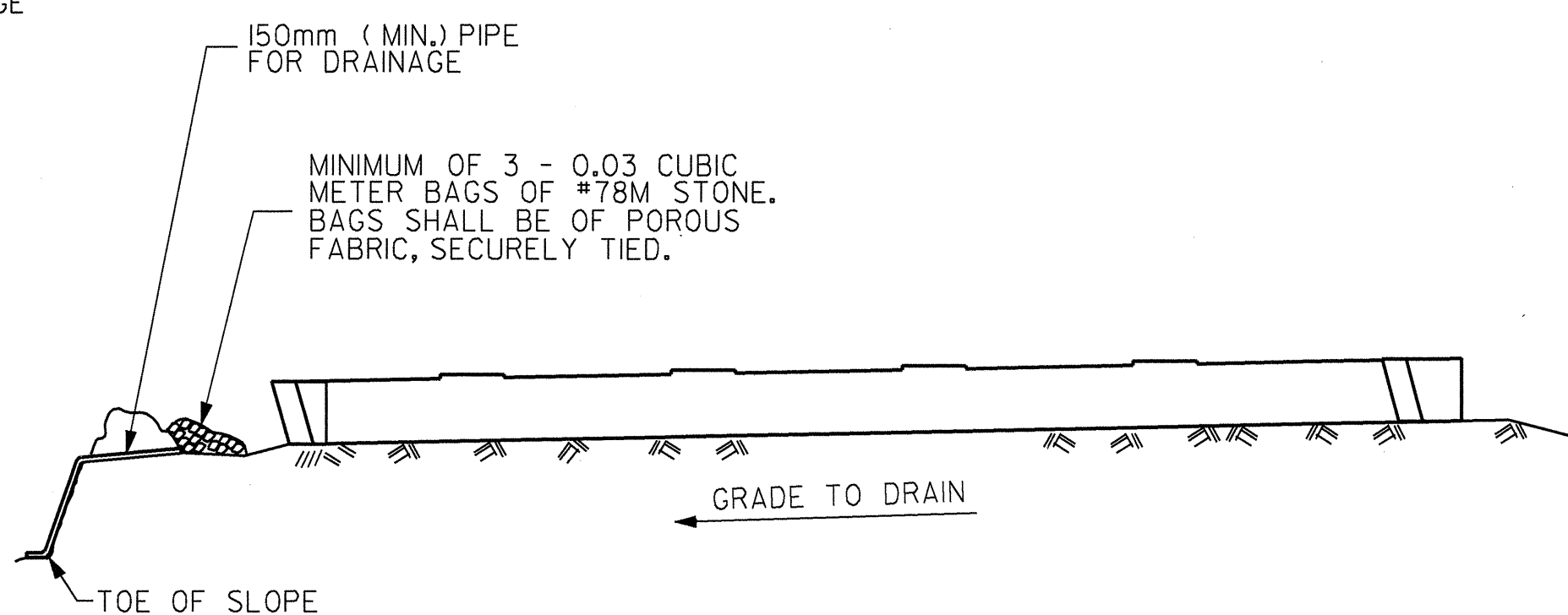
BILL OF MATERIAL						BILL OF MATERIAL					
END BENT NO. 1						END BENT NO. 1					
BAR	No.	SIZE	TYPE	LENGTH	WEIGHT	BAR	No.	SIZE	TYPE	LENGTH	WEIGHT
B1	10	29	1	15860	803	H26	1	22	STR	2480	8
B2	4	19	STR	15100	135	H27	1	22	STR	2680	8
B3	13	13	STR	1120	14	H28	1	22	STR	2900	9
B4	8	13	STR	7940	63	H29	1	22	STR	3100	9
H1	1	22	5	3980	12	H30	1	22	STR	3300	10
H2	1	19	5	3900	9	H31	1	19	STR	2120	5
H3	5	19	STR	3780	42	H32	1	19	STR	2340	5
H4	5	19	STR	3700	41	H33	1	19	STR	2560	6
H5	1	22	STR	2060	6	H34	1	19	STR	2760	6
H6	1	22	STR	2320	7	H35	1	19	STR	2980	7
H7	1	22	STR	2580	8	H36	1	19	STR	3180	7
H8	1	22	STR	2840	9	H37	1	19	STR	3380	8
H9	1	22	STR	3060	9	H38	2	19	STR	1240	6
H10	1	22	STR	3280	10	S1	77	16	3	3040	363
H11	1	22	STR	3520	11	S2	77	16	2	1400	167
H12	1	19	STR	1980	4	S3	84	13	4	1980	165
H13	1	19	STR	2240	5	S4	2	16	3	3100	10
H14	1	19	STR	2500	6	S5	2	16	2	1460	5
H15	1	19	STR	2760	6	V1	108	19	STR	2280	550
H16	1	19	STR	2980	7	V2	28	16	STR	1740	76
H17	1	19	STR	3200	7	V3	17	16	STR	2000	53
H18	1	19	STR	3440	8	V4	2	16	STR	1840	6
H19	2	19	STR	1440	6	V5	2	16	STR	1560	5
H20	1	22	5	3940	12	V6	2	16	STR	1300	4
H21	1	19	5	4020	9	V7	2	16	STR	1040	3
H22	5	19	STR	3500	39	V8	15	16	STR	1900	44
H23	5	19	STR	3580	40	V9	2	16	STR	1040	3
H24	1	22	STR	2040	6	V10	2	16	STR	1380	4
H25	1	22	STR	2260	7	V11	2	16	STR	1700	5

REINFORCING STEEL 2,898 kg
 CLASS "A" CONCRETE BREAKDOWN
 POUR #1 (CAP AND LOWER WINGWALLS) 18.3 CU. M
 TOTAL CLASS "A" CONCRETE 18.3 CU. M
 HP 310x79 STEEL PILES
 TOTAL NO. = 12 LIN. METERS = 267.6



PILE SPLICE DETAILS

*POSITION OF PILE DURING WELDING.



BAGGED STONE AND PIPE SHALL BE PLACED IMMEDIATELY AFTER COMPLETION OF END BENT EXCAVATION. PIPE MAY BE EITHER CONCRETE, CORRUGATED STEEL, CORRUGATED ALUMINUM ALLOY, OR CORRUGATED PLASTIC. PERFORATED PIPE WILL NOT BE ALLOWED.

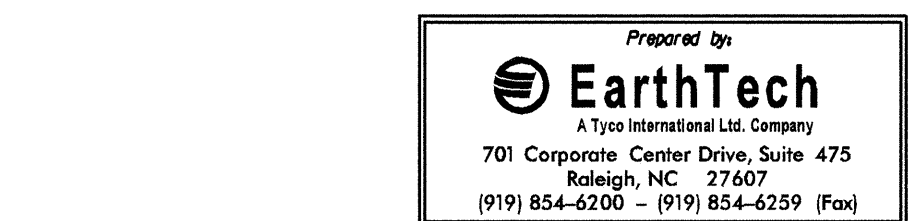
BAGGED STONE SHALL REMAIN IN PLACE UNTIL THE ENGINEER DIRECTS THAT IT BE REMOVED. THE CONTRACTOR SHALL REMOVE AND DISPOSE OF SILT ACCUMULATIONS AT BAGGED STONE WHEN SO DIRECTED BY THE ENGINEER. BAGS SHALL BE REMOVED AND REPLACED WHENEVER THE ENGINEER DETERMINES THAT THEY HAVE DETERIORATED AND LOST THEIR EFFECTIVENESS.

NO SEPARATE PAYMENT WILL BE MADE FOR THIS WORK AND THE ENTIRE COST OF THIS WORK SHALL BE INCLUDED IN THE UNIT CONTRACT PRICE BID FOR THE SEVERAL PAY ITEMS.

TEMPORARY DRAINAGE AT END BENT

(END BENT NO. 1 SHOWN, END BENT NO. 2 SIMILAR)

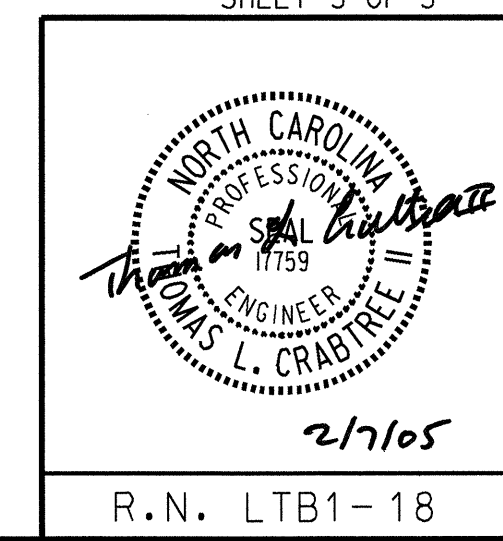
TOP OF PILE CUT-OFF ELEVATIONS	
PILE	ELEVATION
P1	93.560
P2	93.598
P3	93.636
P4	93.674
P5	93.712
P6	93.750
P7	93.788
P8	93.826
P9	93.864
P10	93.902
P11	93.940
P12	93.978



PROJECT NO. R-2552C
 JOHNSTON COUNTY
 STATION: 121+97.157 -L2LT-

STATE OF NORTH CAROLINA
 DEPARTMENT OF TRANSPORTATION
 RALEIGH

SUBSTRUCTURE
 (LEFT LANE BRIDGE)
 END BENT NO. 1
 DETAILS



REVISIONS						SHEET NO.	
NO.	BY:	DATE:	NO.	BY:	DATE:	TOTAL SHEETS	
1			3			43	
2			4			431	

DRAWN BY: MTB DATE: 11/04
 CHECKED BY: TLC DATE: 12/04
 APPROVED BY: DATE:

R.N. LTB1-18