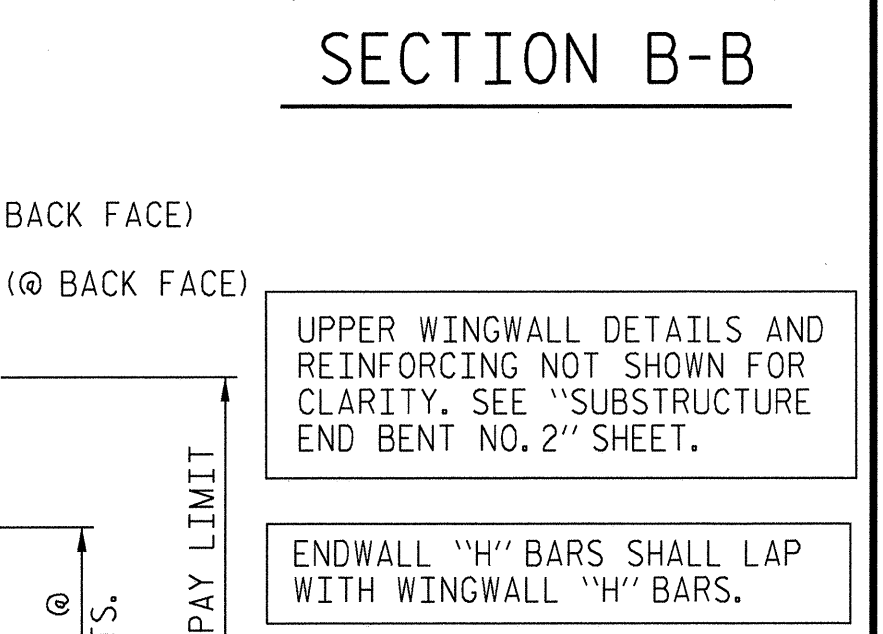
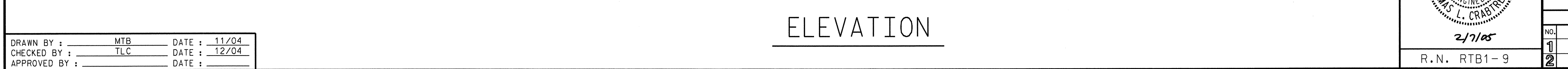
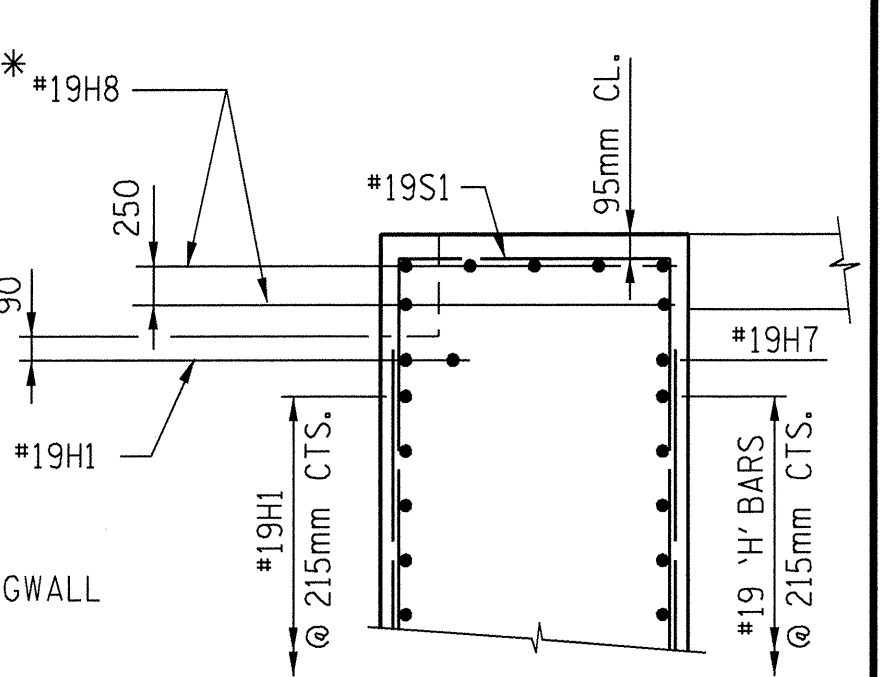


- ### NOTES
- FOR UPPER WINGWALL DETAILS AND REINFORCING STEEL, SEE END BENT NO. 2, SHEET 2 OF 3.
  - DECK REINFORCING NOT SHOWN FOR CLARITY.
  - THE CONTRACTOR SHALL PAY PARTICULAR ATTENTION TO INSURE THAT THE AREAS BETWEEN THE BOTTOM OF THE GIRDERS AND THE BRIDGE SEATS ARE COMPLETELY FILLED WITH CONCRETE.
  - ENDWALL QUANTITIES ARE INCLUDED IN SUPERSTRUCTURE QUANTITIES.
  - ENDWALL CONCRETE SHALL BE CLASS AA AND PAID FOR AS "CLASS AA CONCRETE".
  - ENDWALL CONCRETE QUANTITIES INCLUDE UPPER WINGWALL, DEFINED BY CONSTRUCTION JOINT. SEE "SUBSTRUCTURE END BENT NO. 2" SHEETS.
  - FOR SECTION A-A, SEE "SUPERSTRUCTURE PLAN OF SPAN" SHEETS.
  - BARS L1E AND U1E SHALL BE MATCHED WITH BARS S1 AS SHOWN.



UPPER WINGWALL DETAILS AND REINFORCING NOT SHOWN FOR CLARITY. SEE "SUBSTRUCTURE END BENT NO. 2" SHEET.

ENDWALL "H" BARS SHALL LAP WITH WINGWALL "H" BARS.

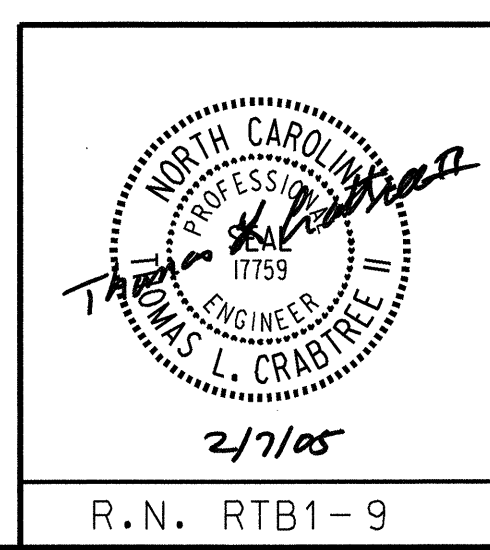


PROJECT NO. R-2552C  
 JOHNSTON COUNTY  
 STATION: 122+14.832 -L2RT-

STATE OF NORTH CAROLINA  
 DEPARTMENT OF TRANSPORTATION  
 RALEIGH

SUPERSTRUCTURE  
 (RIGHT LANE BRIDGE)  
 END BENT NO. 2 - ENDWALL  
 DIAPHRAGM DETAILS

REVISIONS						SHEET NO.	
NO.	BY:	DATE:	NO.	BY:	DATE:	TOTAL SHEETS	
1			3			5-302	
2			4			4/31	



DRAWN BY: MTB DATE: 11/04  
 CHECKED BY: TLC DATE: 12/04  
 APPROVED BY: DATE:

R.N. RTB1-9