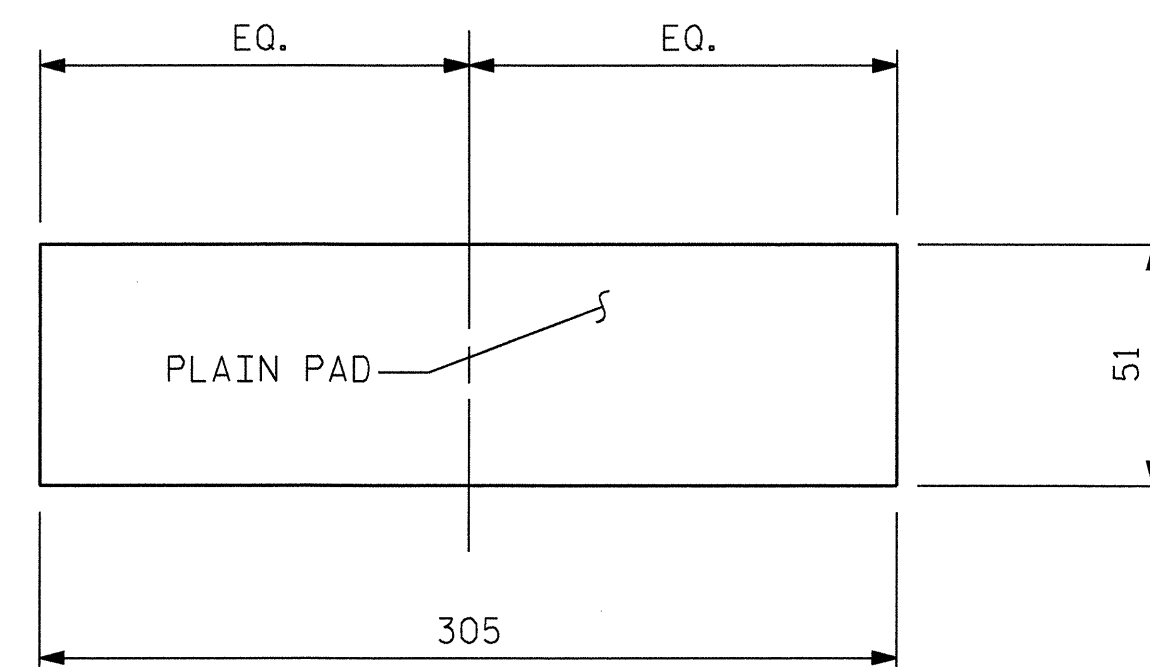
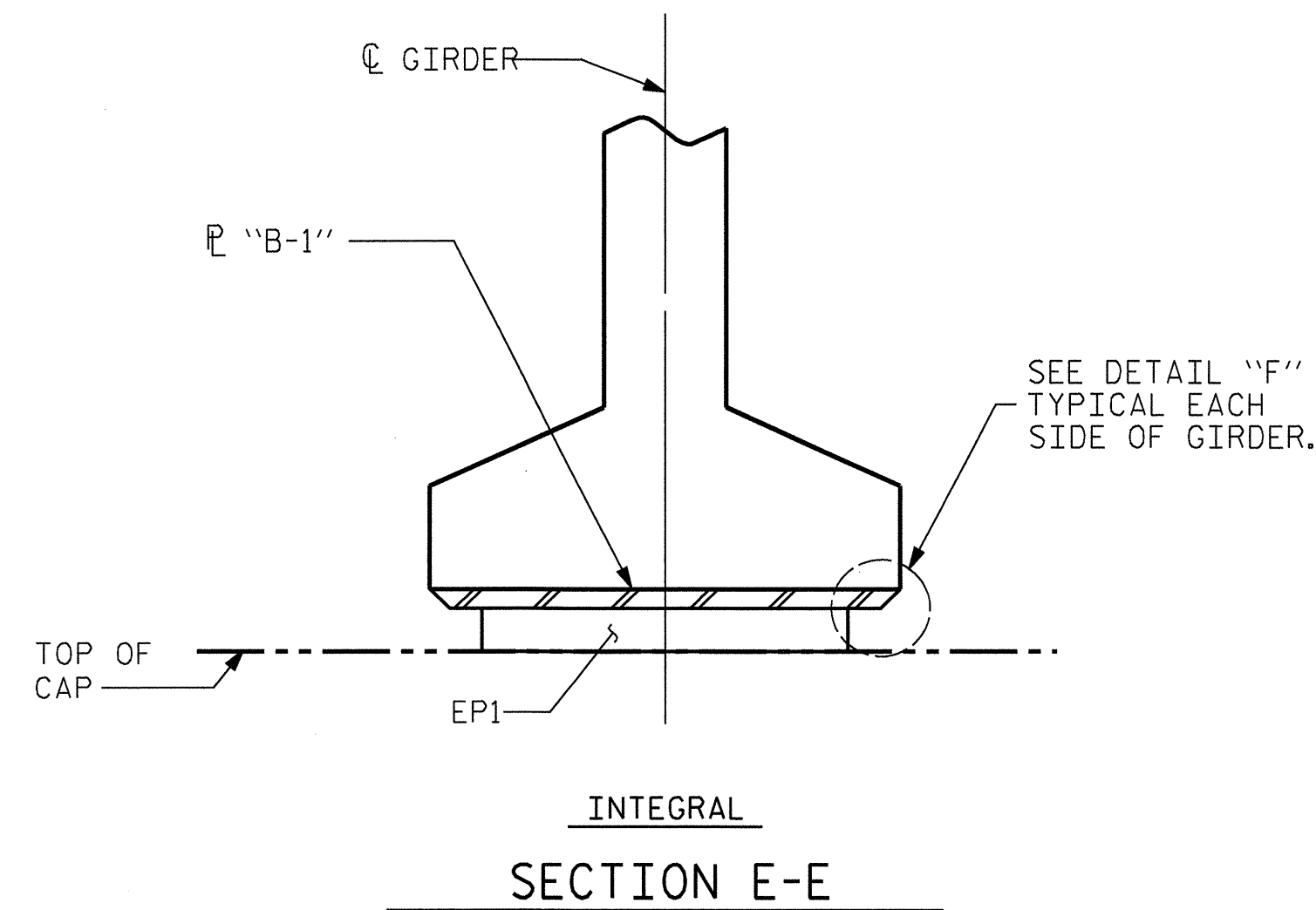
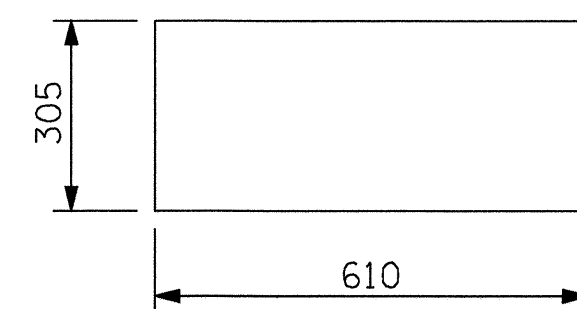


NOTES

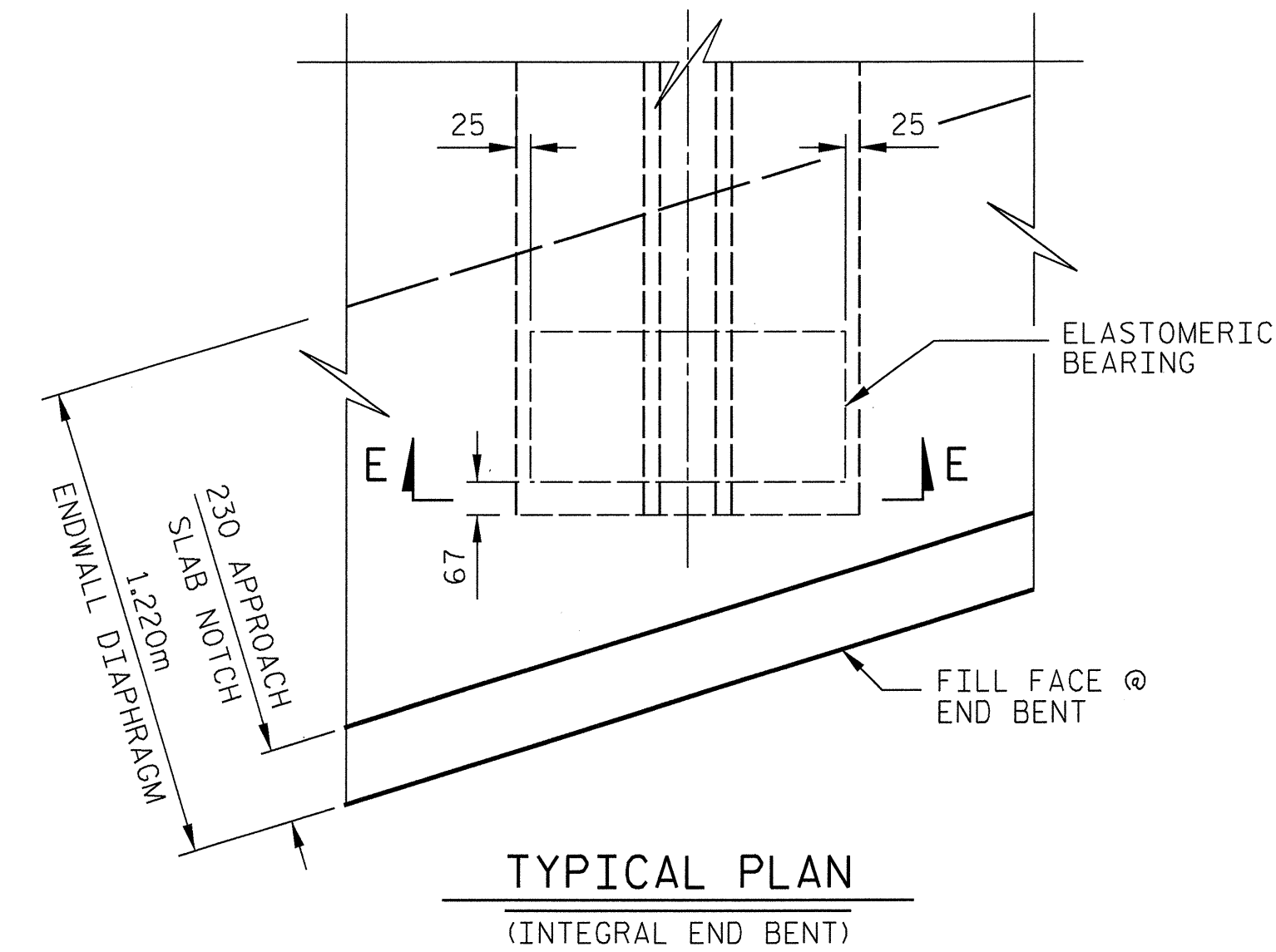
FOR ELASTOMERIC BEARINGS, SEE SPECIAL PROVISIONS.
ELASTOMER IN ALL BEARINGS SHALL BE 60 DUROMETER HARDNESS.



TYPICAL SECTION OF ELASTOMERIC BEARINGS (SIDE VIEW)



EP1 (10 REQUIRED)
PLAN VIEW OF ELASTOMERIC BEARING



— LOAD RATINGS —	
	MAX. D.L.+L.L.
EP1	743 kN

Prepared by
EarthTech
A Tyco International Ltd. Company
701 Corporate Center Drive, Suite 475
Raleigh, NC 27607
(919) 854-6200 - (919) 854-6259(fax)

PROJECT NO. R-2552C
JOHNSTON COUNTY
STATION: 122+14.832 -L2RT-

STATE OF NORTH CAROLINA
DEPARTMENT OF TRANSPORTATION
RALEIGH

SUPERSTRUCTURE
ELASTOMERIC BEARING
DETAILS
(RIGHT BRIDGE)
(PRESTRESSED CONCRETE
GIRDER SUPERSTRUCTURE)

2/7/05
R. N. RTB1-13

REVISIONS						SHEET NO.
NO.	BY:	DATE:	NO.	BY:	DATE:	TOTAL SHEETS
1			3			5-306
2			4			431

DRAWN BY : LOFTON DATE : 11/04
CHECKED BY : TLC DATE : 12/04
APPROVED BY : DATE :

USER: RlmJoflon DGN: K:\B762\RT1_Bridge\CADD\ebi\RT1.dgn DATE: 2/4/2005 TIME: 13:39:06
 +
 +
 +