

PLAN

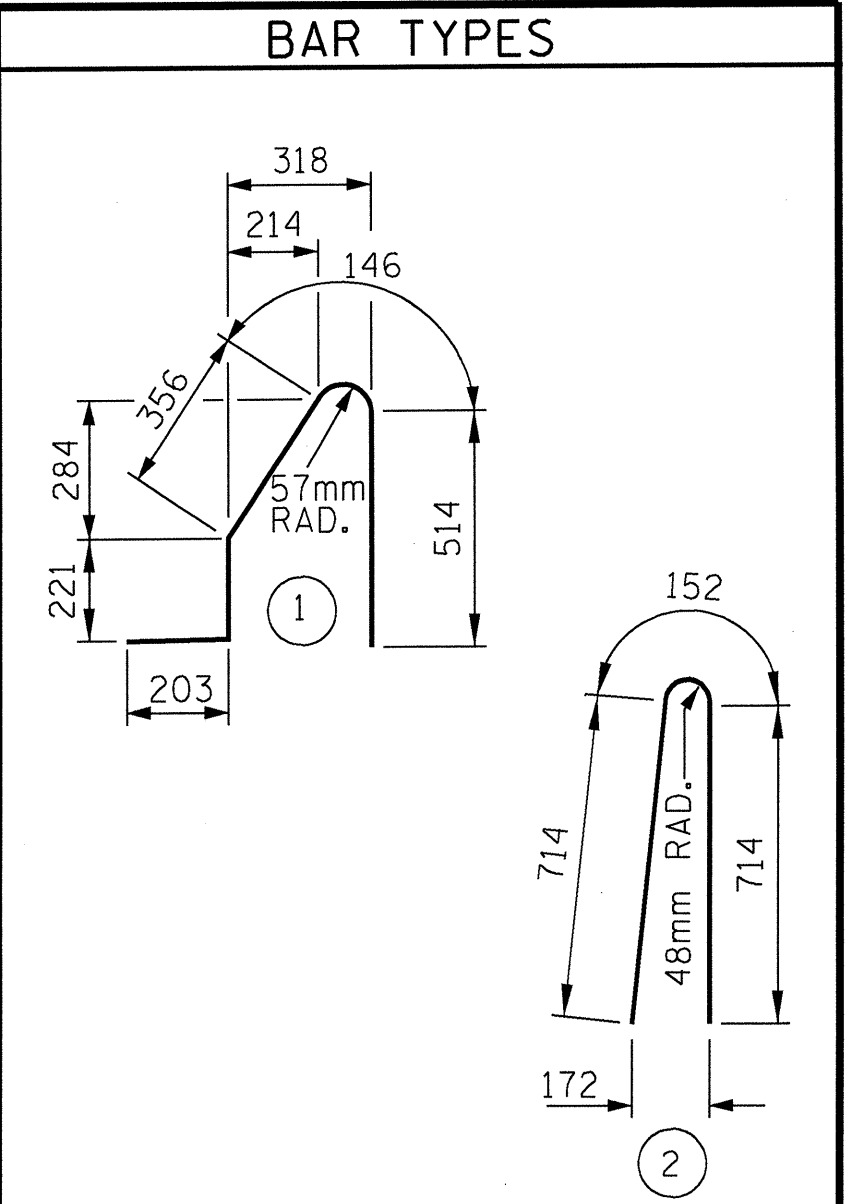
NOTE: #5S1E AND #5S2E BARS MAY BE SHIFTED SLIGHTLY IN ORDER TO MAINTAIN A 50mm MINIMUM CLEARANCE TO EXPANSION JOINT IN RAIL.

NOTES

THE BARRIER RAIL IN THE SPAN SHALL NOT BE CAST UNTIL ALL SLAB CONCRETE IN THE SPAN HAS BEEN CAST AND HAS REACHED A MINIMUM COMPRESSIVE STRENGTH OF 20.7 MPa.

ALL REINFORCING STEEL IN BARRIER RAILS SHALL BE EPOXY COATED.

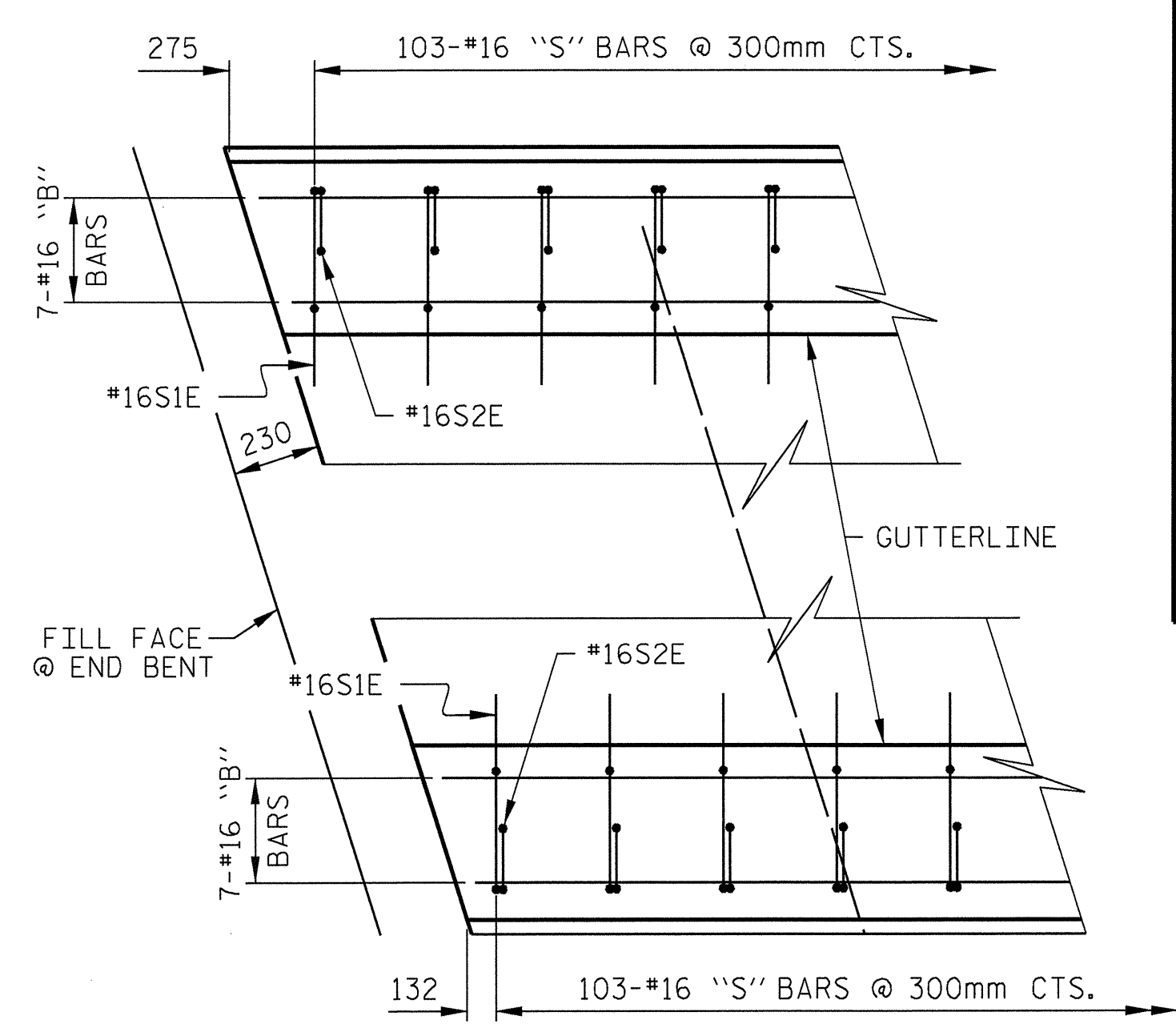
VERTICAL GROOVED CONTRACTION JOINTS, 12mm IN DEPTH, SHALL BE TOOLED IN ALL EXPOSED FACES OF THE BARRIER RAIL AND IN ACCORDANCE WITH ARTICLE 825-10(B) OF THE STANDARD SPECIFICATIONS, THE CONTRACTION JOINT SHALL BE LOCATED AT EACH THIRD POINT BETWEEN BARRIER RAIL EXPANSION JOINTS. ONLY ONE CONTRACTION JOINT IS REQUIRED AT MIDPOINT OF BARRIER RAIL SEGMENTS LESS THAN 6.1m IN LENGTH AND NO CONTRACTION JOINTS ARE REQUIRED FOR THOSE SEGMENTS LESS THAN 3.5m IN LENGTH.



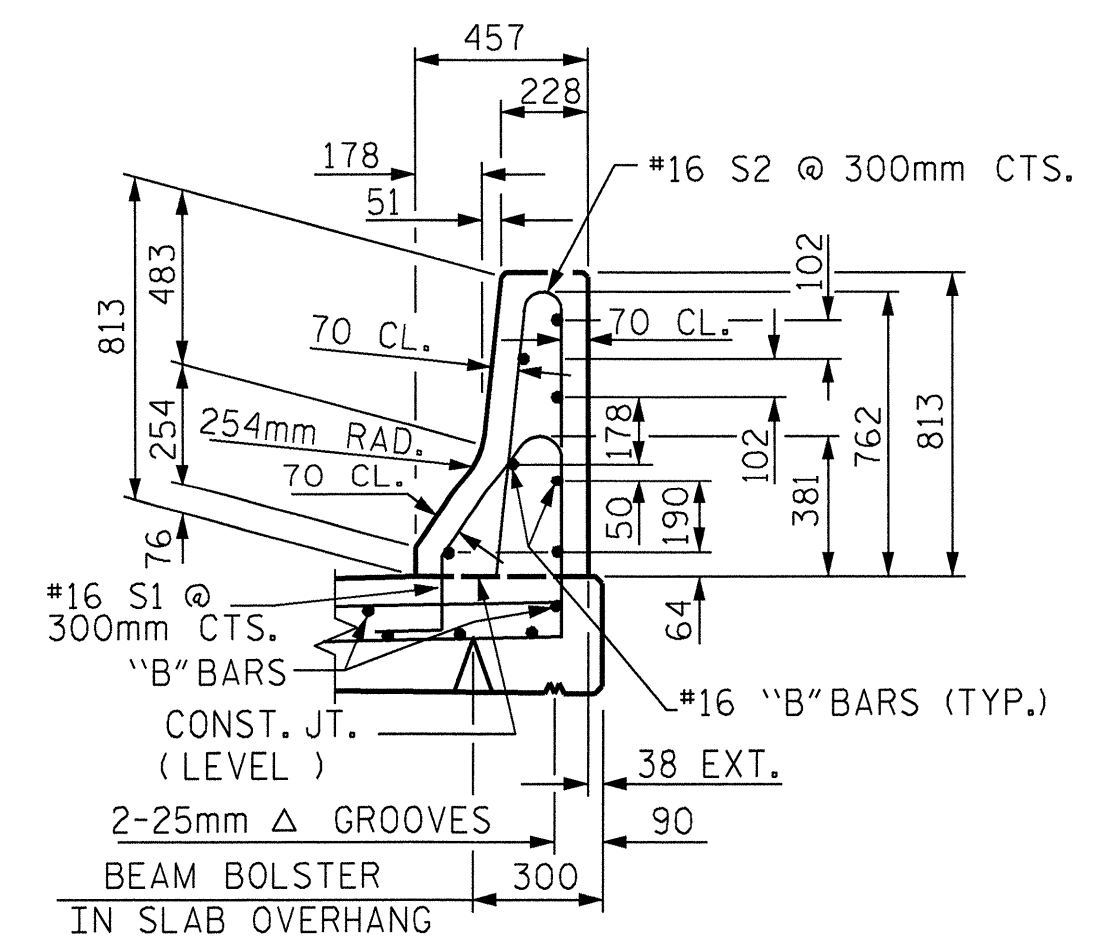
ALL BAR DIMENSIONS ARE OUT TO OUT.

BILL OF MATERIAL
FOR CONCRETE BARRIER RAIL ONLY

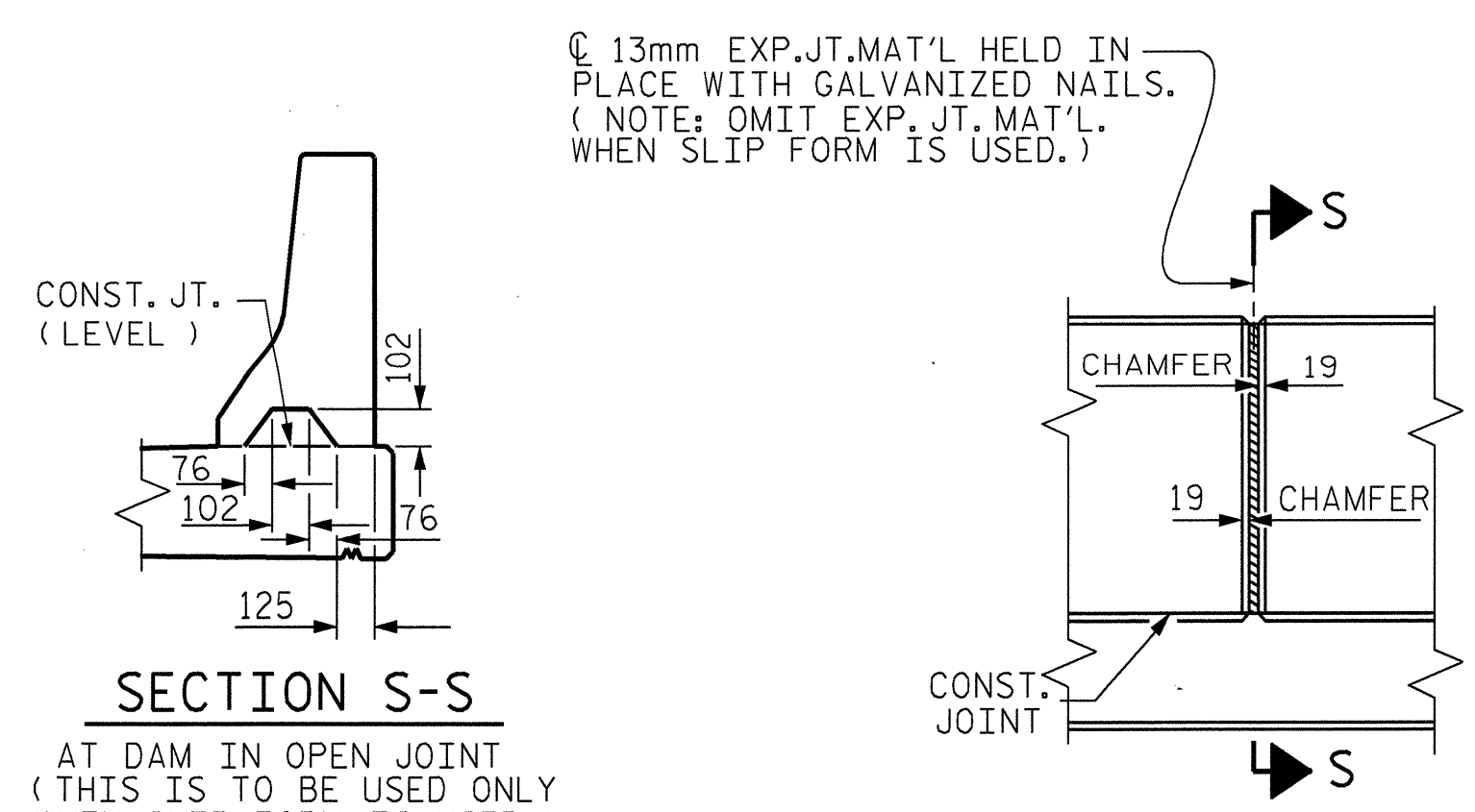
BAR	No.	SIZE	TYPE	LENGTH	WEIGHT
S1E	206	#16	1	1440	460
S2E	206	#16	2	1580	505
B1E	56	#16	STR	4360	379
B2E	28	#16	STR	7700	335
				EPOXY COATED REINFORCING STEEL	1,679 kg
				CLASS AA CONCRETE	14.3 cu. m
				CONCRETE BARRIER RAIL	61.9 meters



END OF RAIL DETAILS



SECTION THRU RAIL



ELEVATION AT EXPANSION JOINTS

BARRIER RAIL DETAILS

PROJECT NO. R-2552C
JOHNSTON COUNTY
 STATION: 122+14.832 -L2RT-



THIS STANDARD DRAWING REVIEWED AND ADAPTED FOR USE AT THE REFERENCED LOCATION BY THE UNDERSIGNED:

Thomas L. Crabtree
 NORTH CAROLINA PROFESSIONAL ENGINEER
 17759
 2/7/05
 R. N. RTB1-14

STATE OF NORTH CAROLINA
 DEPARTMENT OF TRANSPORTATION
 RALEIGH

STANDARD CONCRETE BARRIER RAIL (RIGHT BRIDGE)

REVISIONS						SHEET NO.
NO.	BY:	DATE:	NO.	BY:	DATE:	TOTAL SHEETS
1			3			5-357
2			4			431

ASSEMBLED BY :	LOFTON	DATE :	12/04
CHECKED BY :	CJW	DATE :	12/04
DRAWN BY :	ARB 5/87	REV. 8/16/99	RWW/LES
CHECKED BY :	SJD 9/87	REV. 10/17/00	RWW/LES
		REV. 5/7/03R	RWW/JTE