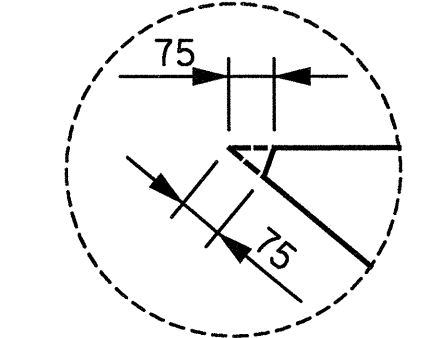
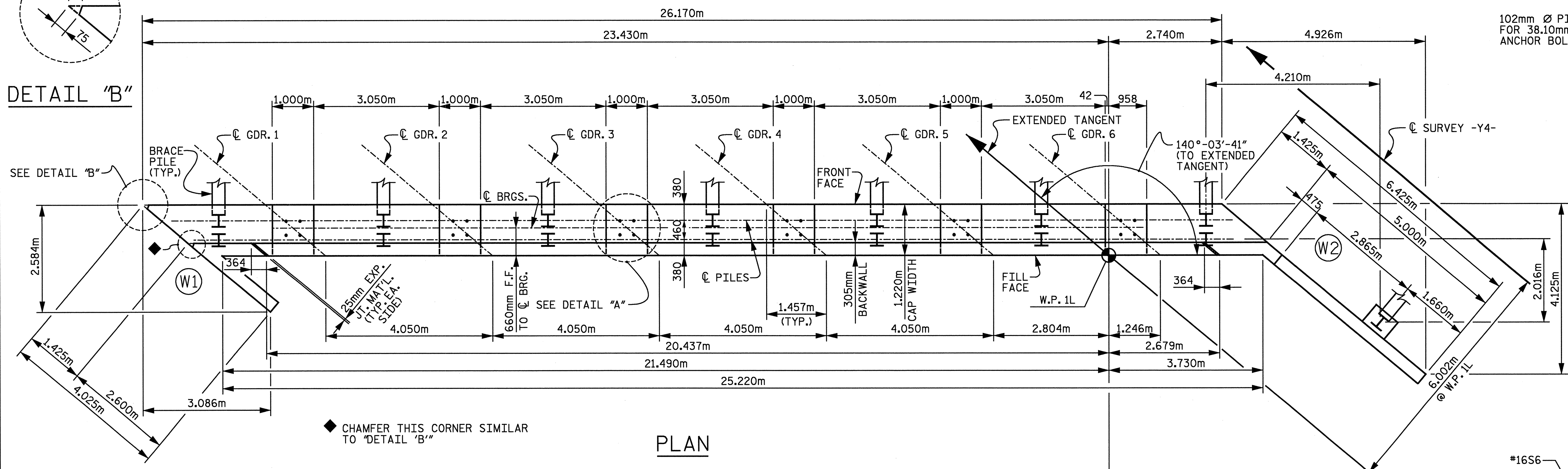


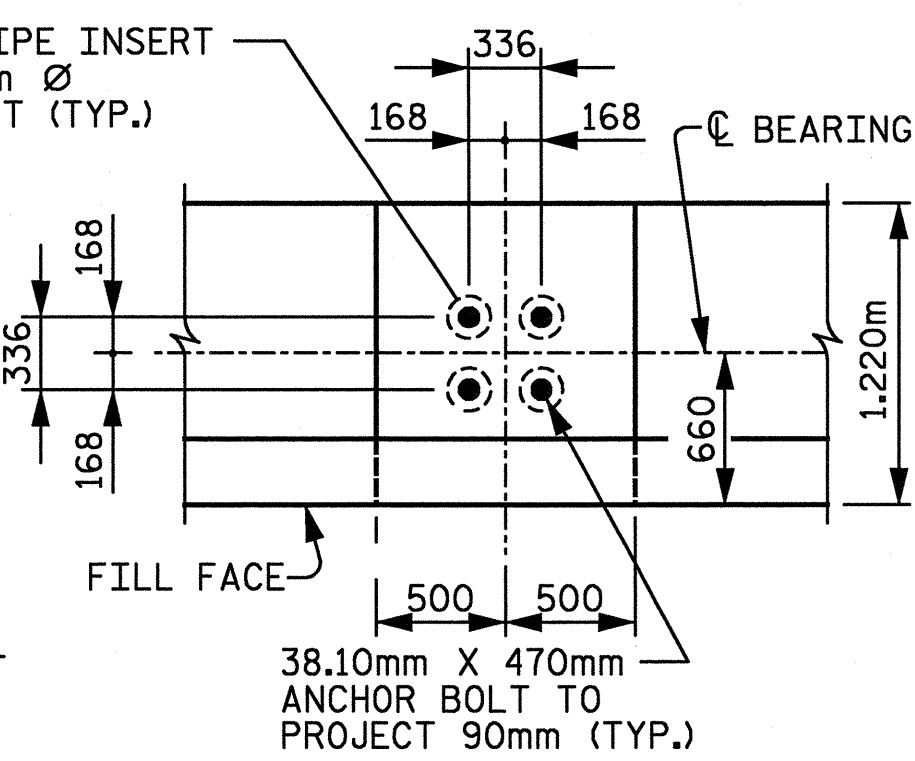
NOTE:
SEE SHEET 3 OF 3 FOR SECTION B-B AND NOTES.



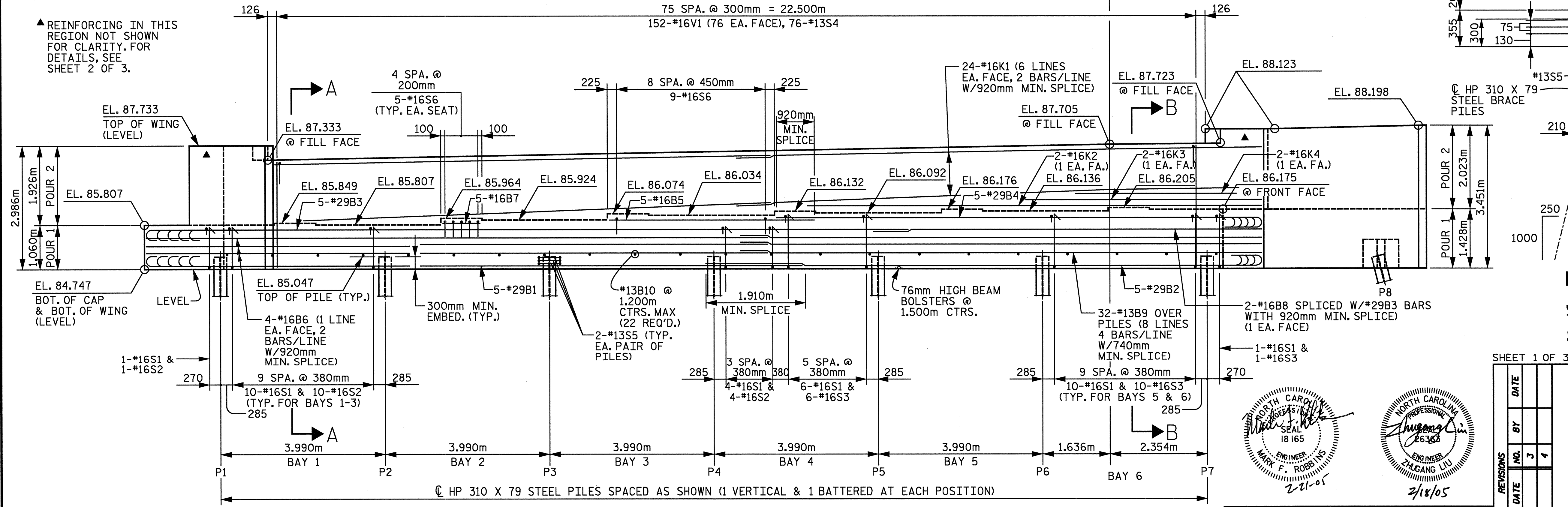
DETAIL "B"



PLAN

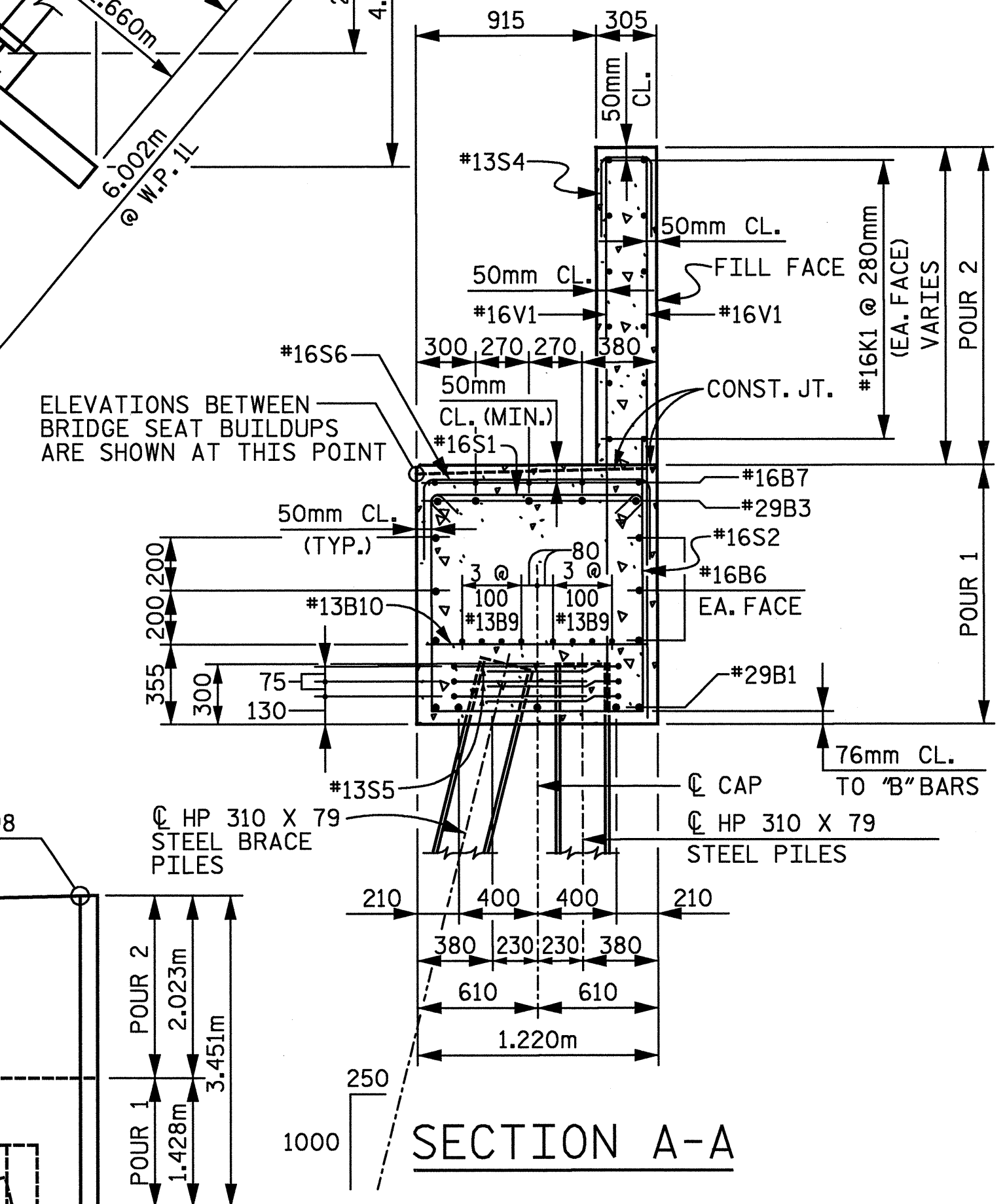


DETAIL "A"



ELEVATION

(LOOKING IN DIRECTION OF STATIONING)



SECTION A-A

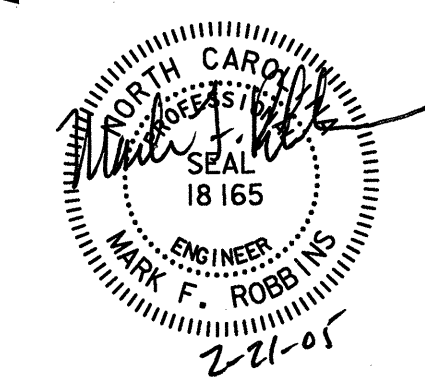
PROJECT No. R-252C
JOHNSTON COUNTY
STATION: POT 148+08.446 -L2-
POT 23+96.446 -Y4-

SHEET 1 OF 3

NO.	BY	DATE
1		
2		

STATE OF NORTH CAROLINA
DEPARTMENT OF TRANSPORTATION
RALEIGH

END BENT 1
-LEFT LANE-



RALPH WHITEHEAD ASSOCIATES, INC.
CONSULTING ENGINEERS
P.O. BOX 35624 CHARLOTTE, N.C. 28235

DRAWN BY: KPM, LGH
CHECKED BY: TVR

DATE: 10-04
DATE: 12-04

DWG. NO.: D-1749.21

02/17/2005 05:47:40 PM: \\p01309-100\ustation\struct\Final\3109-100_end_bent_la.dgn