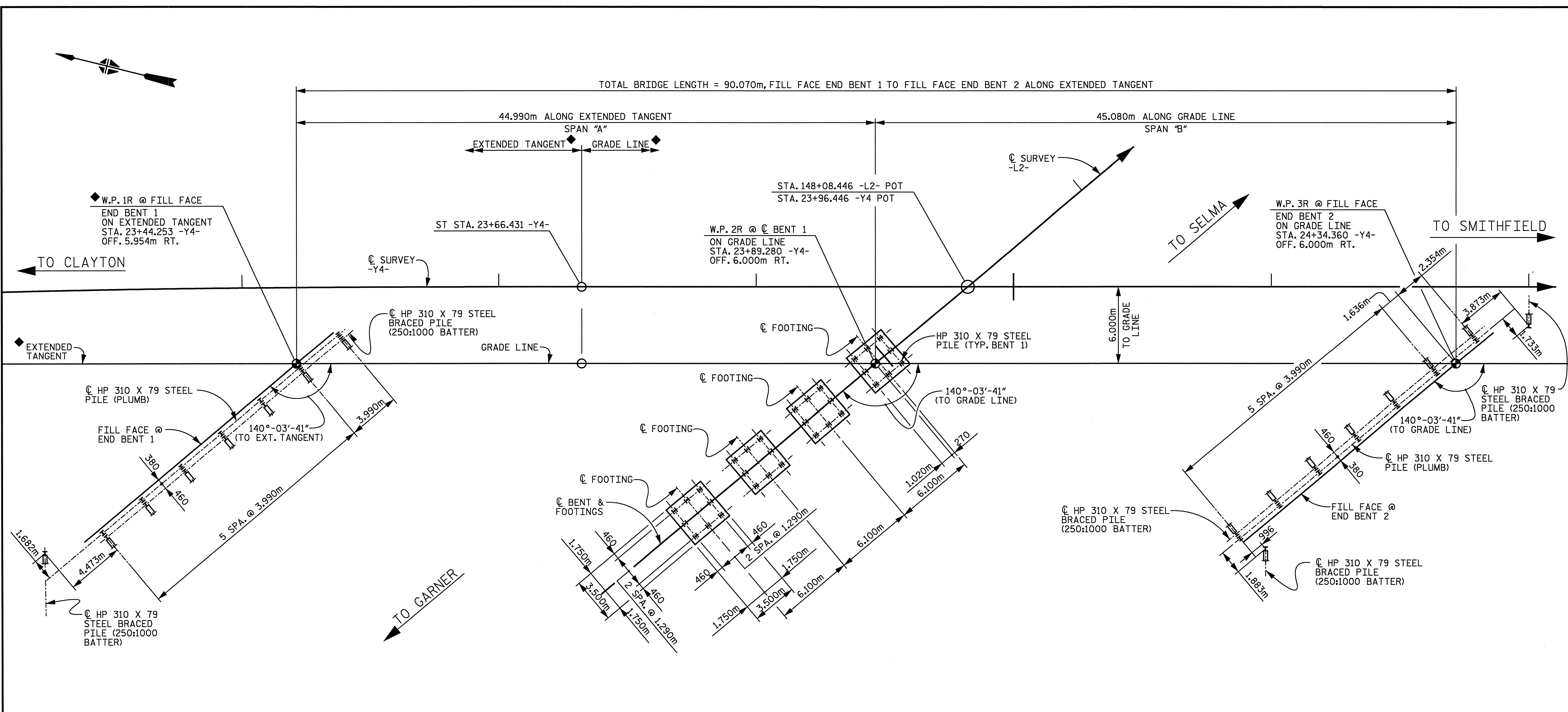


02/17/2005 04:55:59 PM \\pm\proj\3109-200\ustation\struct\find\3109-200-gen-fnd-layout.dgn david.lowery



END BENT 1

BENT 1
DIMENSIONS ARE TYPICAL FOR EACH FOOTING.

END BENT 2

FOUNDATION LAYOUT

ALL PILES SHALL BE HP 310 X 79 STEEL PILES.
DIMENSIONS TO PILES ARE MEASURED TO C OF PILE.

◆ SEE SHEET TITLED "GENERAL DRAWING EXTENDED TANGENT LAYOUT" FOR DETAILS.



W RALPH WHITEHEAD ASSOCIATES, INC.
CONSULTING ENGINEERS
P.O. BOX 35624 CHARLOTTE, N.C. 28235

DRAWN BY LGH DATE 1-05 DWG. NO. D-1750.02
CHECKED BY ZAL DATE 1-05

REVISIONS			
NO.	BY	DATE	DATE
1			
2			

PROJECT NO. R-2552C
JOHNSTON COUNTY
STATION: POT 148+08.446 -L2- =
POT 23+96.446 -Y4-

STATE OF NORTH CAROLINA
DEPARTMENT OF TRANSPORTATION
RALEIGH
**GENERAL DRAWING
FOUNDATION LAYOUT**
-RIGHT LANE-

SHEET NO. 359
TOTAL SHEETS 431