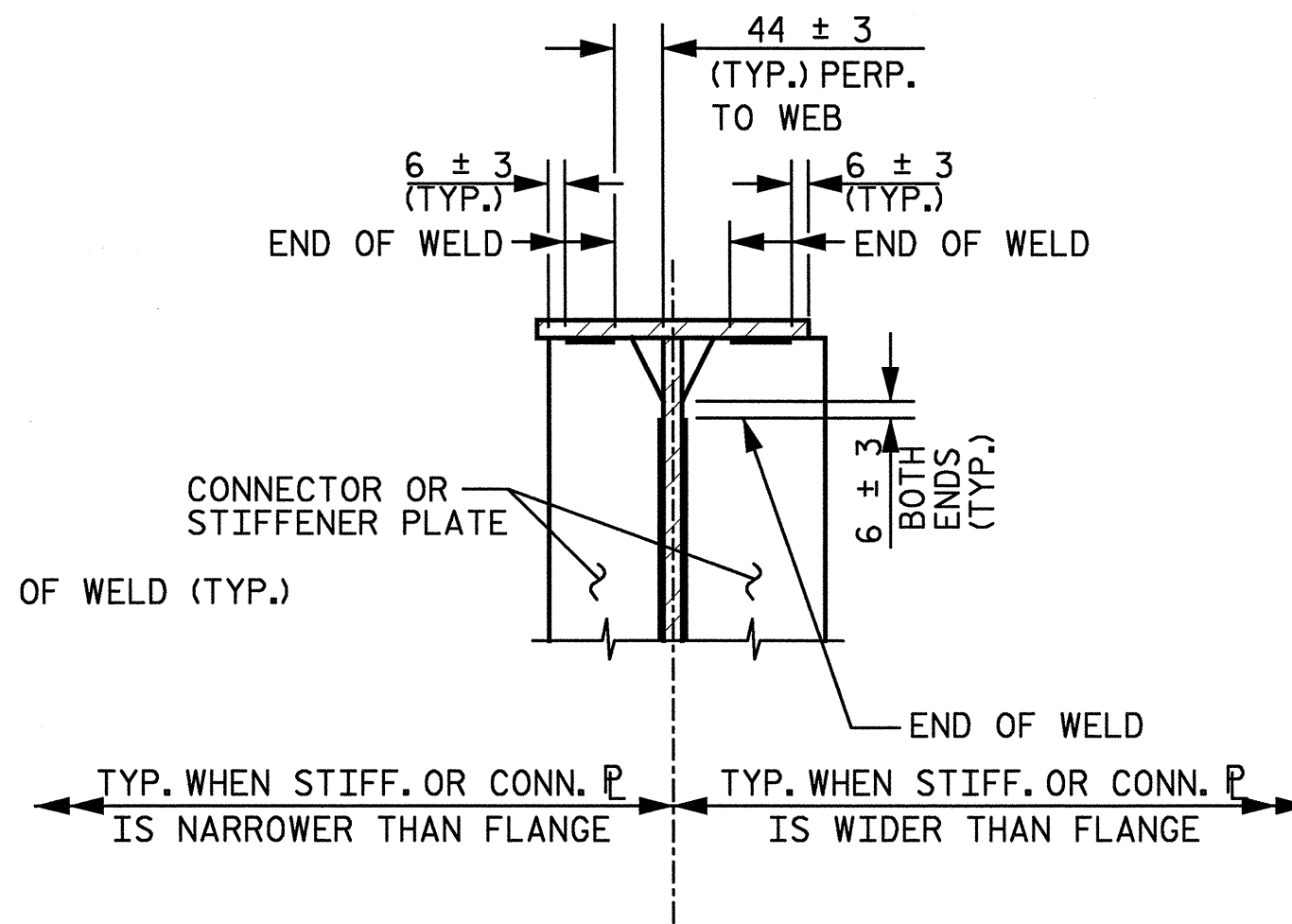
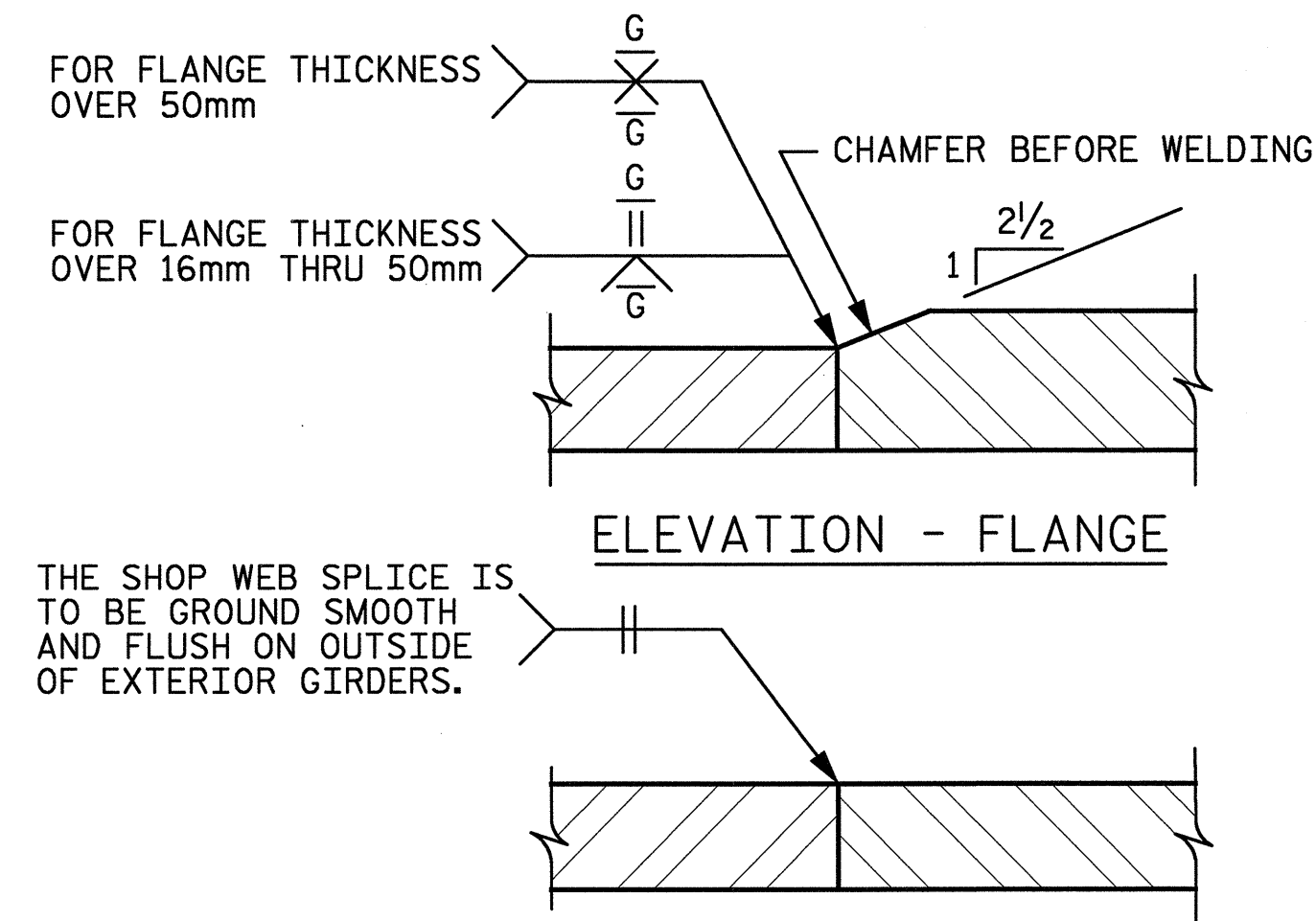


**TYPICAL GUSSET PLATE CONNECTION**  
 (GUSSET PLATE CONNECTED TO TOP CHORD SHOWN,  
 GUSSET PLATE CONNECTED TO BOTT. CHORD SIMILAR.)

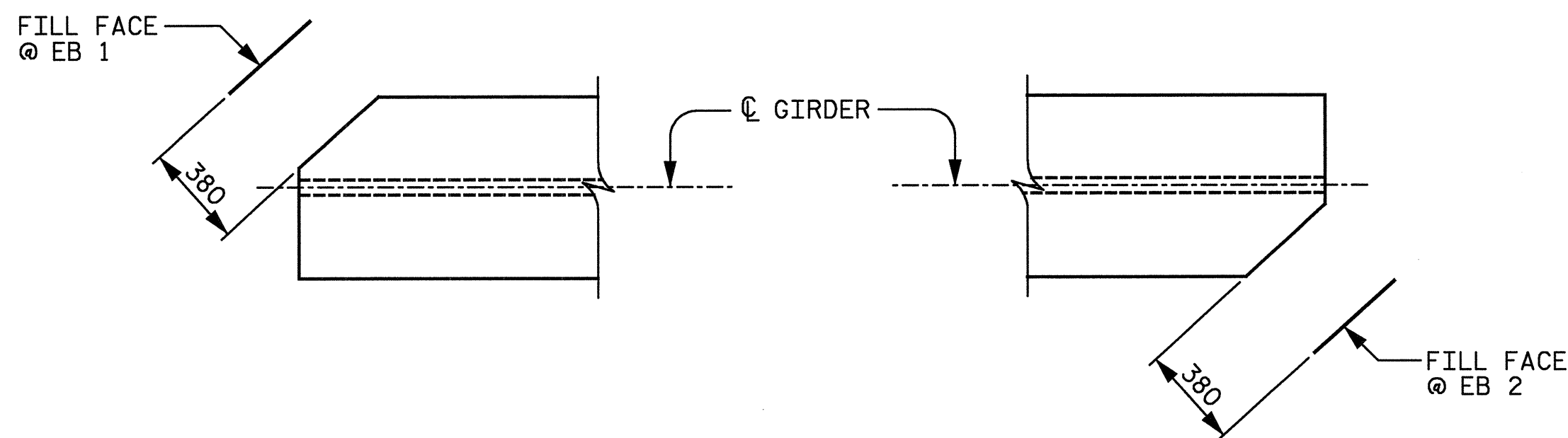
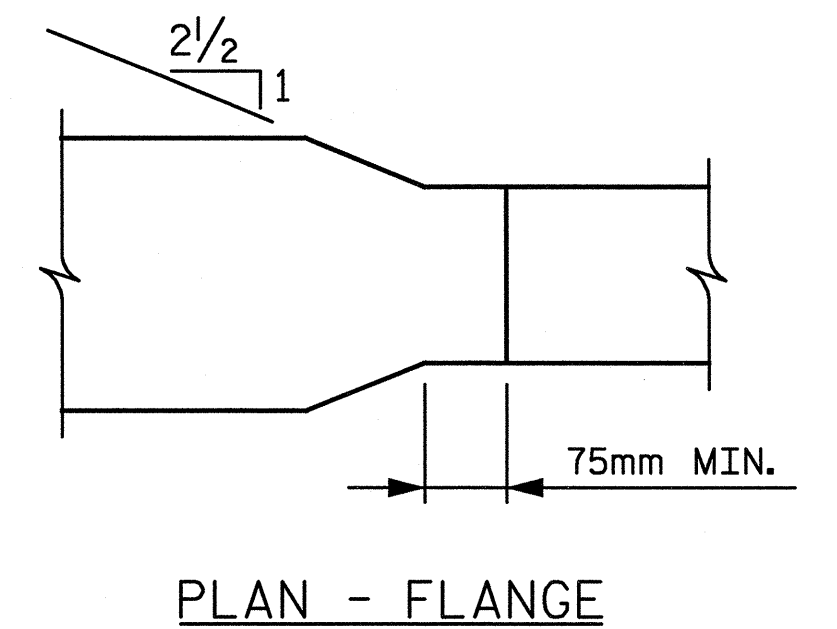


**TYPICAL STIFFENER OR  
 CONNECTOR PLATE CONNECTIONS**

**WELD TERMINATION DETAILS**

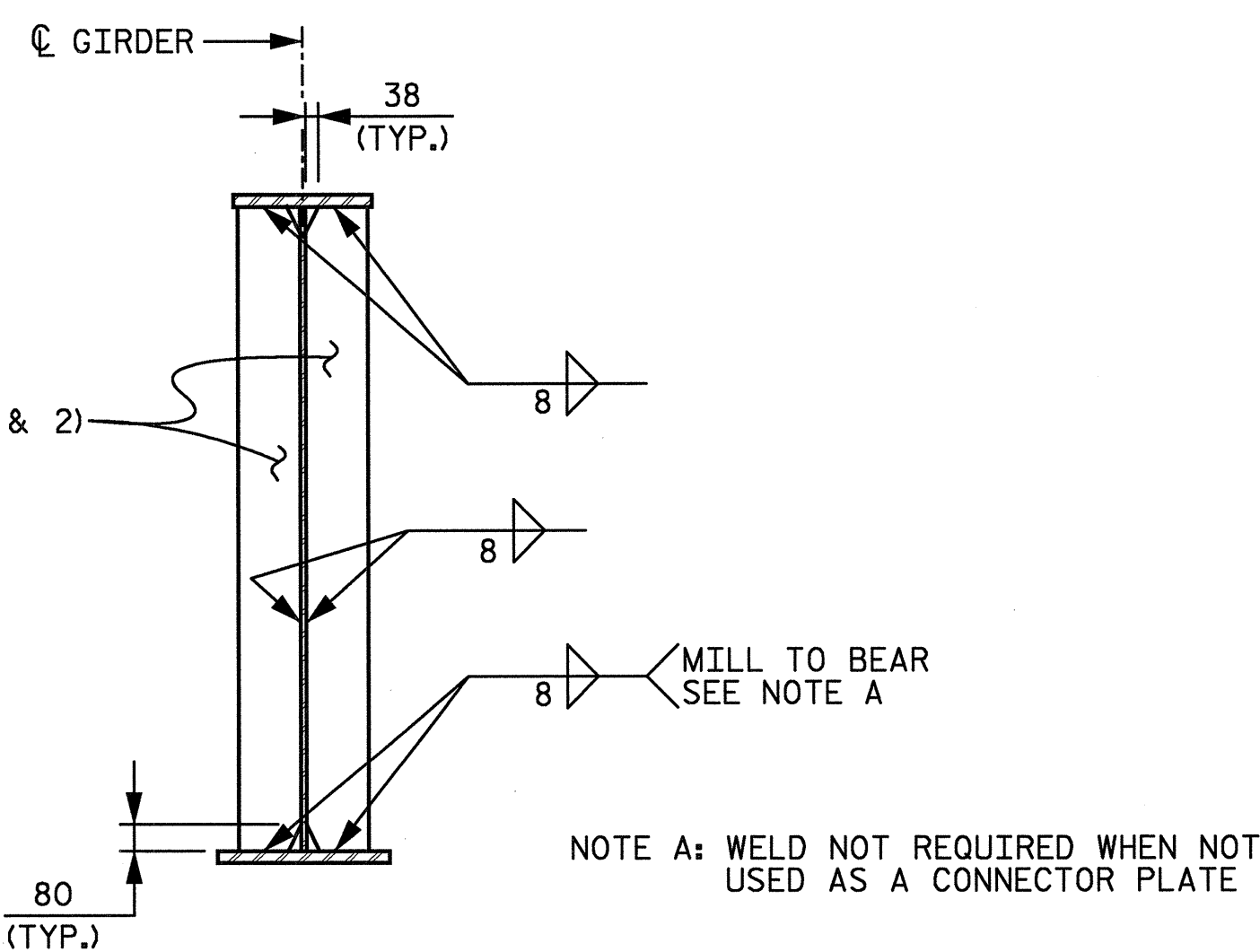


**SHOP SPLICE DETAILS**  
 ELEVATION - FLANGE  
 PLAN - WEB  
 (UNIFORM THICKNESS)



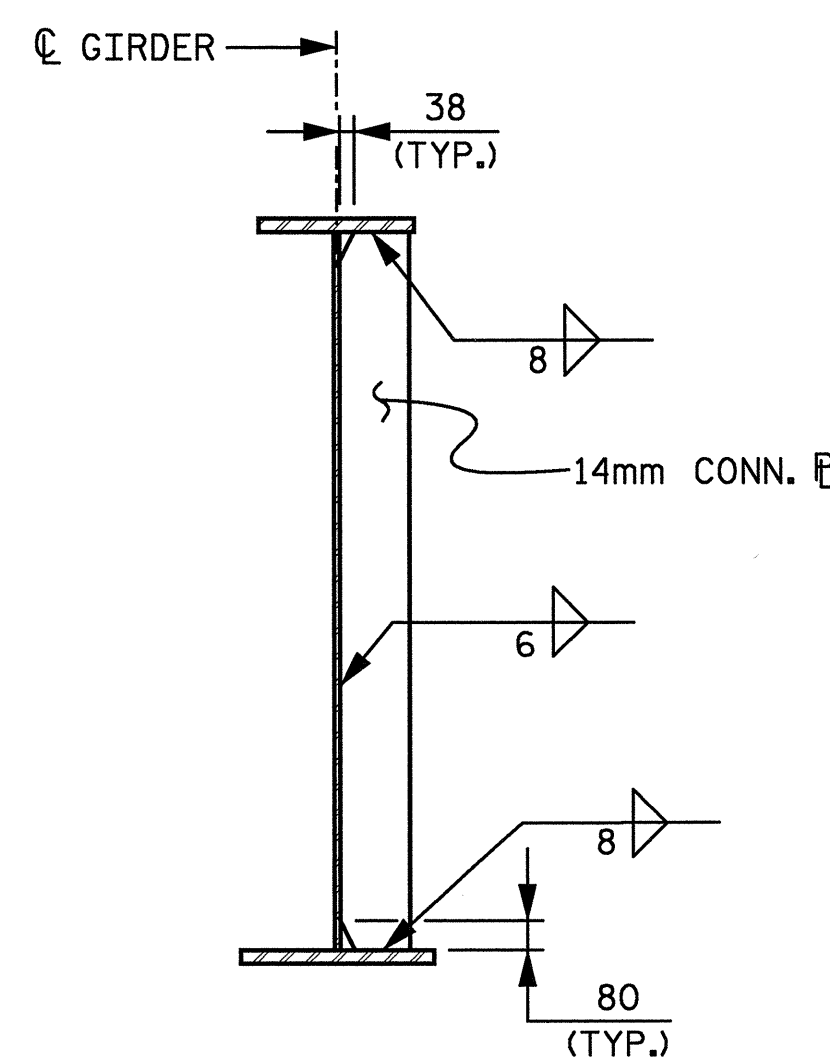
**TOP AND BOTT. FLANGE CLIP DETAILS**  
 AT END BENT 1      AT END BENT 2

MINIMUM FILLET WELD SIZE	
BASE METAL THICKNESS OF THICKER PART JOINED (T)	MINIMUM SIZE OF FILLET WELD
≤ 19mm	6mm
> 19mm	8mm



**BEARING STIFFENER**

■ INCREASE BEARING STIFFENER WIDTH AS REQUIRED WHEN USED AS A CROSSFRAME CONNECTOR PLATE. INCREASE BEARING STIFFENER THICKNESS AS REQUIRED TO MAINTAIN WIDTH TO THICKNESS RATIO NO LARGER THAN 9.5.



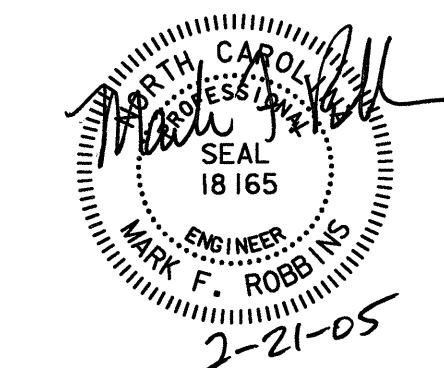
**CONNECTOR P DETAIL**

PROJECT No. R-2552C  
 JOHNSTON COUNTY  
 STATION: POT 148+08.446 -L2-  
 POT 23+96.446 -Y4-

SHEET 2 OF 2

STATE OF NORTH CAROLINA  
 DEPARTMENT OF TRANSPORTATION  
 RALEIGH

STRUCTURAL STEEL DETAILS  
 -RIGHT LANE-



**W** RALPH WHITEHEAD ASSOCIATES, INC.  
 CONSULTING ENGINEERS  
 P.O. BOX 35624 CHARLOTTE, N.C. 28235  
 DRAWN BY: WBS, LGH      DATE: 11-04      DWG. NO.:  
 CHECKED BY: TVR      DATE: 12-04      D-1750.13

REVISIONS		NO.	DATE
		1	
		2	

NO.	BY	DATE
1		
2		

SHEET NO.	5-370
TOTAL SHEETS	431