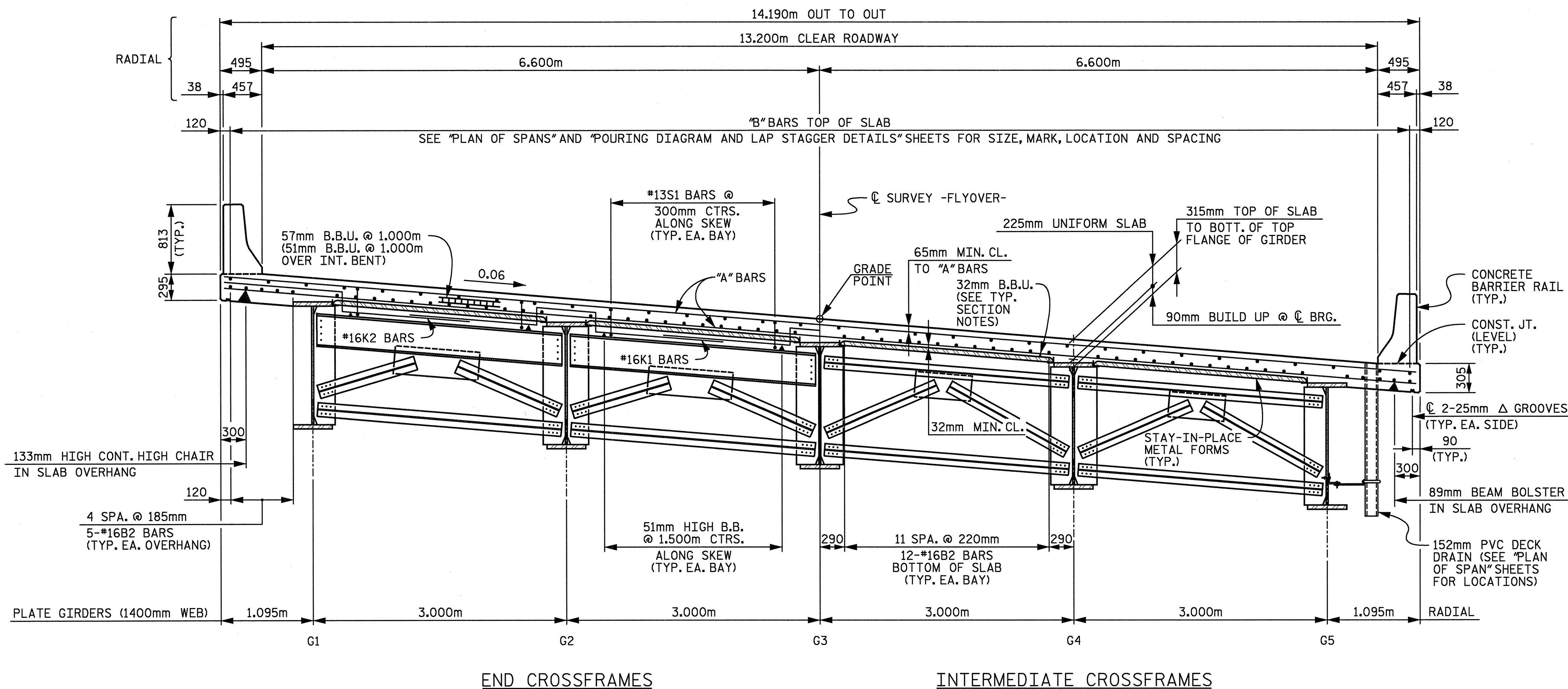


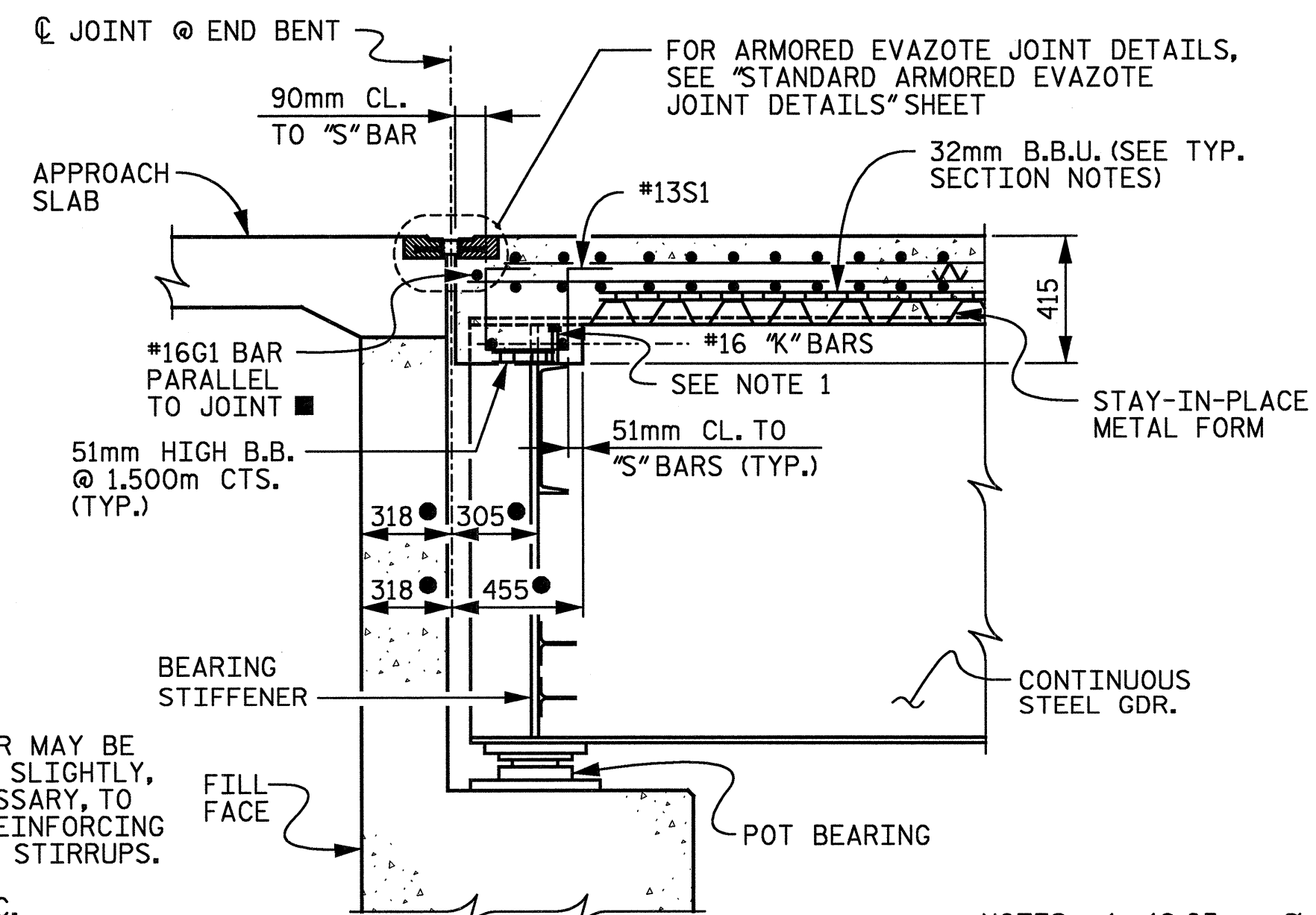
02/23/2005 10:30:54 AM d:\proj\3109-300\ustruc\struc\final\3109-300-1-1-sec1.dgn david.lowery



TYPICAL SECTION

TYPICAL SECTION NOTES

- PROVIDE 32mm HIGH BEAM BOLSTERS UPPER (B.B.U.) AT 1.200m CENTERS ATOP THE METAL STAY-IN-PLACE FORMS TO SUPPORT THE BOTTOM MAT OF "A" BARS. WHEN USING REMOVABLE FORMS, PROVIDE CONTINUOUS HIGH CHAIRS FOR METAL DECK (C.H.C.M.) @ 1.200m CTS. WITH A HEIGHT TO SUPPORT THE BOTTOM MAT OF "A" BARS A CLEAR DISTANCE OF 65mm ABOVE THE TOP OF THE REMOVABLE FORM.
- SHIFT "B" BARS AS NECESSARY TO CLEAR 152mm Ø PVC PIPE DRAINS.
- FOR PIPE DRAIN CONNECTOR DETAILS, SEE "POURING DIAGRAM AND LAP STAGGER" SHEET.
- METAL STAY-IN-PLACE FORMS AND FALSEWORK SHALL NOT BE WELDED TO GIRDER FLANGES IN THE ZONES REQUIRING CHARPY V-NOTCH TEST. SEE "STRUCTURAL STEEL DETAILS" SHEETS.
- PREVIOUSLY CAST CONCRETE IN A CONTINUOUS UNIT SHALL HAVE ATTAINED A MINIMUM COMPRESSIVE STRENGTH OF 20.7 MPa BEFORE ADDITIONAL CONCRETE IS CAST IN THE UNIT.
- THE BARRIER RAIL IN A CONTINUOUS UNIT SHALL NOT BE CAST UNTIL ALL SLAB CONCRETE HAS BEEN CAST AND HAS REACHED A MINIMUM COMPRESSIVE STRENGTH OF 20.7 MPa.
- STRUCTURAL STEEL ERECTION IN A CONTINUOUS UNIT SHALL BE COMPLETE BEFORE FALSEWORK OR FORMS ARE PLACED ON THE UNIT.
- THE CONTRACTOR MAY, WHEN NECESSARY, PROPOSE A SCHEME FOR AVOIDING INTERFERENCE BETWEEN METAL STAY-IN-PLACE FORM SUPPORTS OR FORMS AND GIRDER STIFFENER OR CONNECTOR PLATES. THE PROPOSAL SHALL BE INDICATED, AS APPROPRIATE, ON EITHER THE STEEL WORKING DRAWINGS OR THE METAL STAY-IN-PLACE FORM WORKING DRAWINGS.
- THE CONTRACTOR SHALL ADJUST THE GIRDER BUILDUPS AS NECESSARY TO INCORPORATE A MAXIMUM PERMISSIBLE VARIATION IN POT BEARING DEPTH OF 13mm, SEE SPECIAL PROVISIONS FOR POT BEARINGS.



SECTION A-A

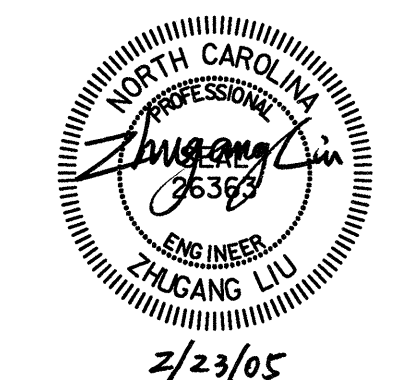
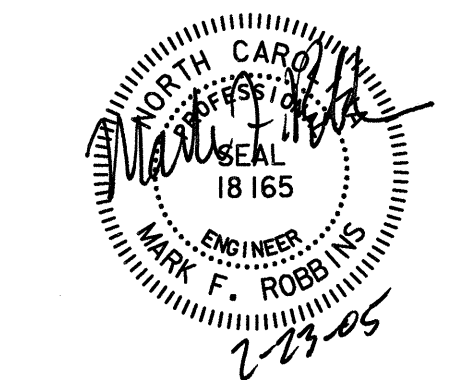
(END BENT 1 SHOWN, END BENT 2 SIMILAR)

- NOTES : 1. 19.05mm Ø X 102mm SHEAR CONNECTORS @ 300mm CTRS. ARE REQUIRED ON CHANNEL (TYP.).
2. FOR LOCATION OF SECTION, SEE "PLAN OF SPANS".

PROJECT NO. **R-2552C**
JOHNSTON COUNTY
 STATION: **POS 16+52.599 -Y4-**
POC 9+28.021 -FLYOVER-

STATE OF NORTH CAROLINA
 DEPARTMENT OF TRANSPORTATION
 RALEIGH

TYPICAL SECTION



RALPH WHITEHEAD ASSOCIATES, INC.
 CONSULTING ENGINEERS
 P.O. BOX 35624 CHARLOTTE, N.C. 28235

DRAWN BY LGH, DDL DATE 8-04 DWG. NO.
 CHECKED BY TVR DATE 9-04 D-1748.05

REVISIONS		DATE
NO.	BY	DATE
1	J	7
2		

SHEET NO.	5-140
TOTAL SHEETS	431