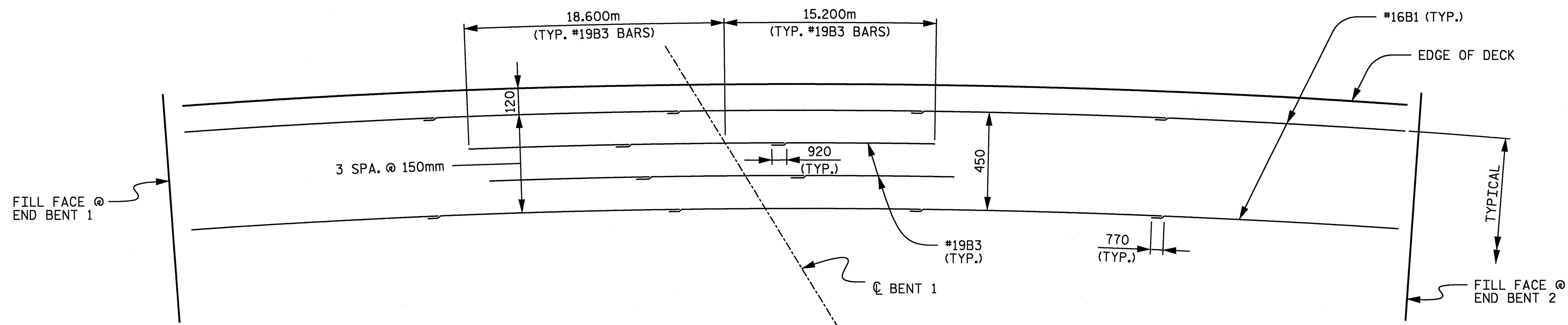
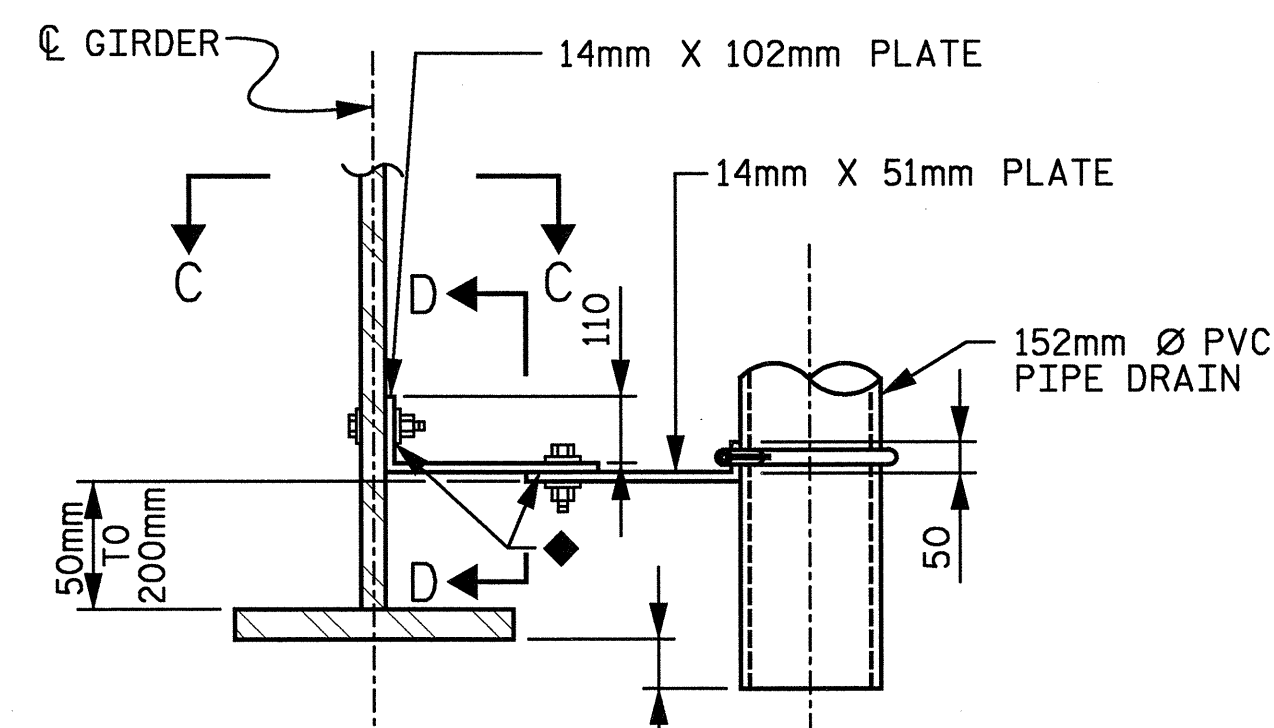


POURING DIAGRAM



TOP "B" BAR REINFORCING LAYOUT



PIPE DRAIN NOTES

COUPLING IN DRAIN PIPE WILL BE PERMITTED AS APPROVED BY THE ENGINEER.

TOP OF FLOOR DRAIN TO BE SET 10mm BELOW SURFACE OF SLAB.

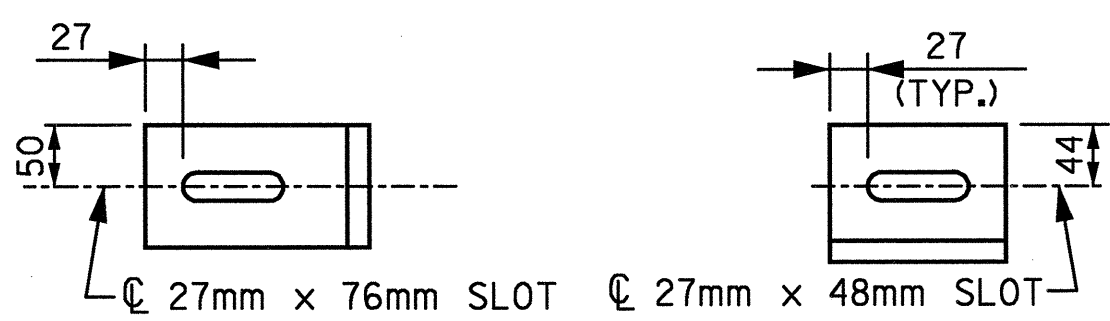
(4) - 13mm SQUARE LUGS TO BE GLUED TO THE PVC PLASTIC PIPE AT EQUAL SPACES AROUND THE PIPE DRAIN APPROXIMATELY 100mm FROM THE TOP OF THE PIPE.

BOLT SIZES TO BE SAME AS CROSSFRAME CONNECTIONS. STAINLESS STEEL WORM DRIVE HOSE CLAMP SHALL BE COMMERCIAL QUALITY.

PVC DECK DRAINS SHALL BE PAINTED WITH TWO COATS OF BROWN PRIMER MEETING THE REQUIREMENTS OF ARTICLE 1080-12 OF THE STANDARD SPECIFICATIONS. EACH COAT SHALL BE 0.050mm THICK. DECK DRAINS SHALL BE ROUGHENED PRIOR TO PAINTING. NO SEPARATE PAYMENT SHALL BE MADE FOR PAINTING PVC DECK DRAINS AS THIS IS CONSIDERED INCIDENTAL TO THE PAY ITEM FOR REINFORCED CONCRETE DECK SLAB.

THE 152mm Ø PVC PLASTIC PIPE AND FITTINGS SHALL BE SCHEDULE 40 AND CONFORM TO ASTM D1785.

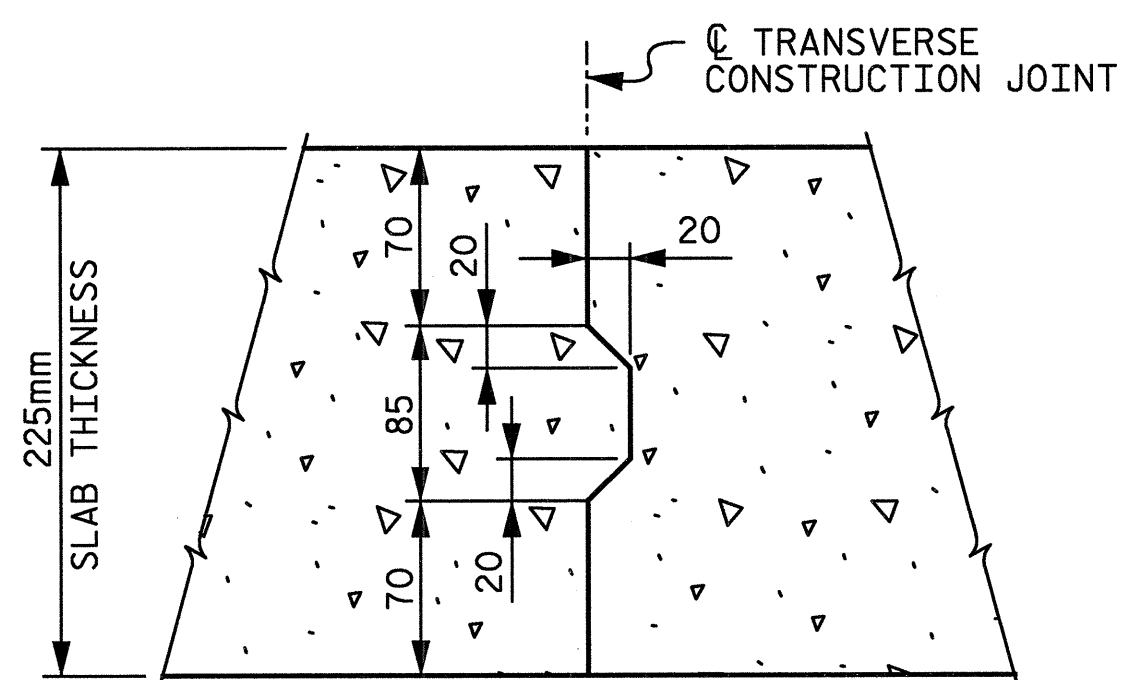
◆ PROVIDE SLOTS AS NECESSARY TO ALLOW ADJUSTMENTS Laterally AND LONGITUDINALLY



SECTION C-C

SECTION D-D

DRAIN CONNECTOR DETAILS



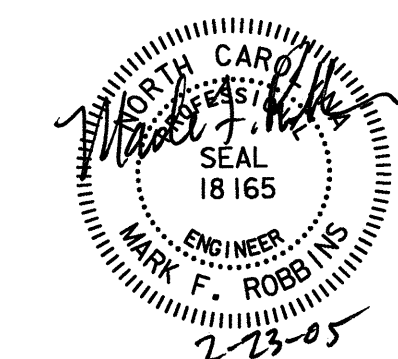
NOTE : REINFORCING STEEL IN SLAB NOT SHOWN. LONGITUDINAL REINFORCING STEEL SHALL BE CONTINUOUS THROUGH JOINT.

TRANSVERSE CONSTRUCTION JOINT IN DECK SLAB

PROJECT No R-2552C
 JOHNSTON COUNTY
 STATION: POS 16+52.599 -Y4-
 POC 9+28.021 -FLYOVER-

STATE OF NORTH CAROLINA
 DEPARTMENT OF TRANSPORTATION
 RALEIGH

POURING DIAGRAM
 AND LAP STAGGER DETAILS



W RALPH WHITEHEAD ASSOCIATES, INC.
 CONSULTING ENGINEERS
 P.O. BOX 35624 CHARLOTTE, N.C. 28235
 DRAWN BY DDL DATE: 8-04 DWG. NO.
 CHECKED BY TVR DATE: 9-04 D-1748.08

REVISIONS		DATE
NO.	BY	DATE
1		
2		
3		
4		

SHEET NO. 5-408
 TOTAL SHEETS 43