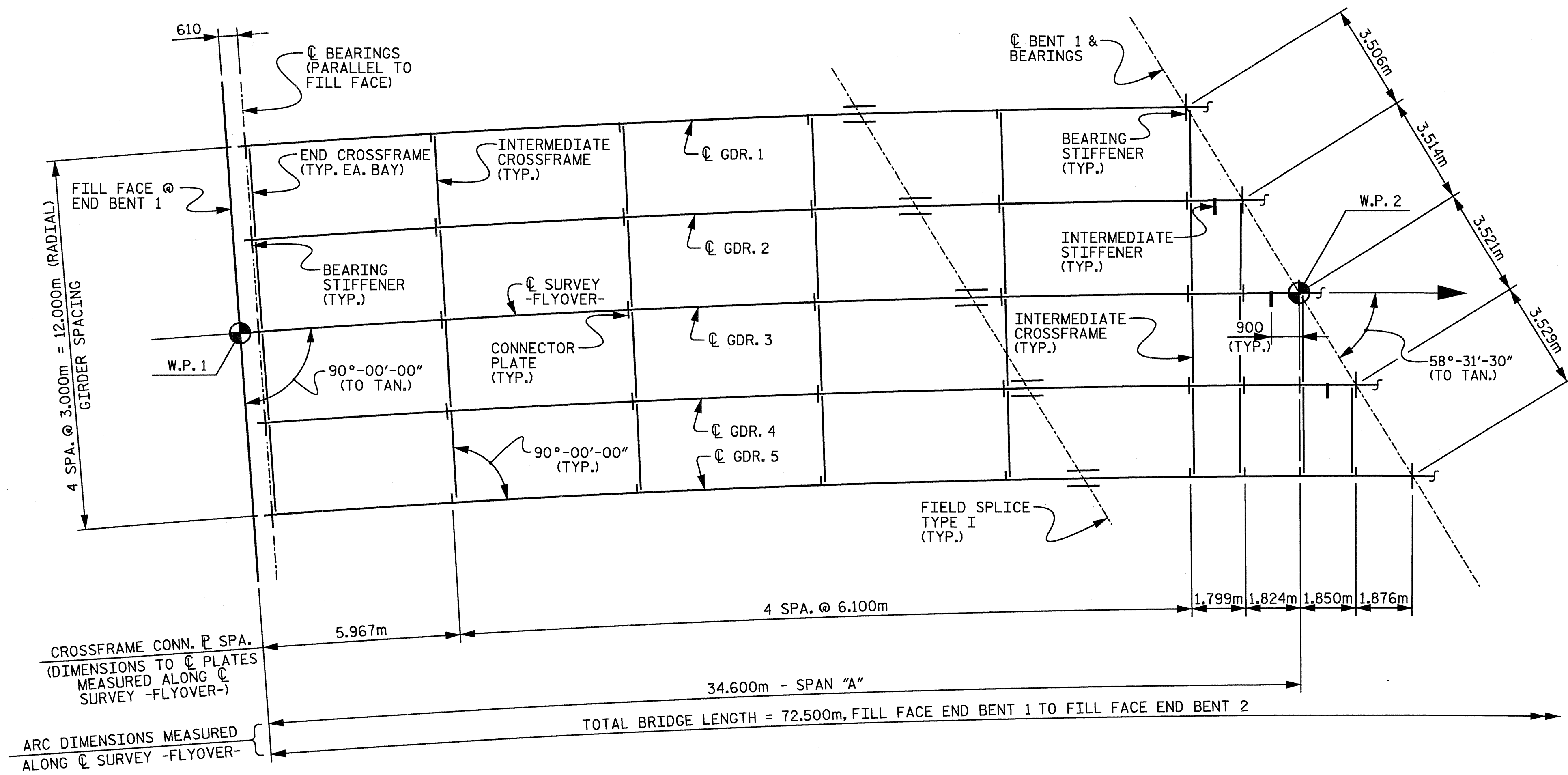
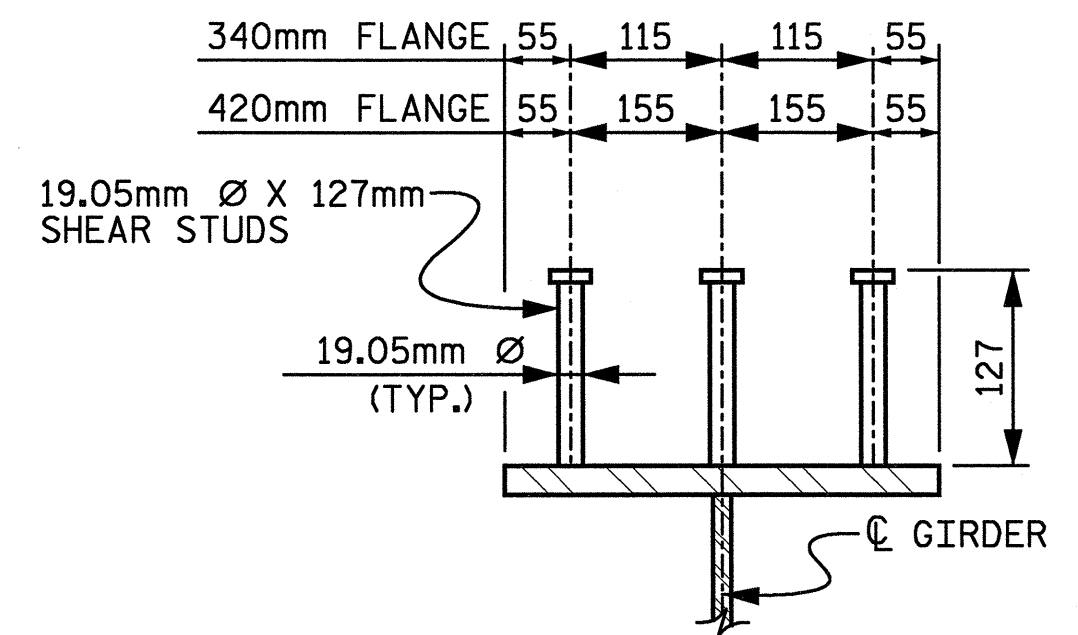


02/23/2005 10:30:50 AM n:\proj\3109-300\ustrat\struc\final\3109-300-frame_a.dgn d:\dl\lwey

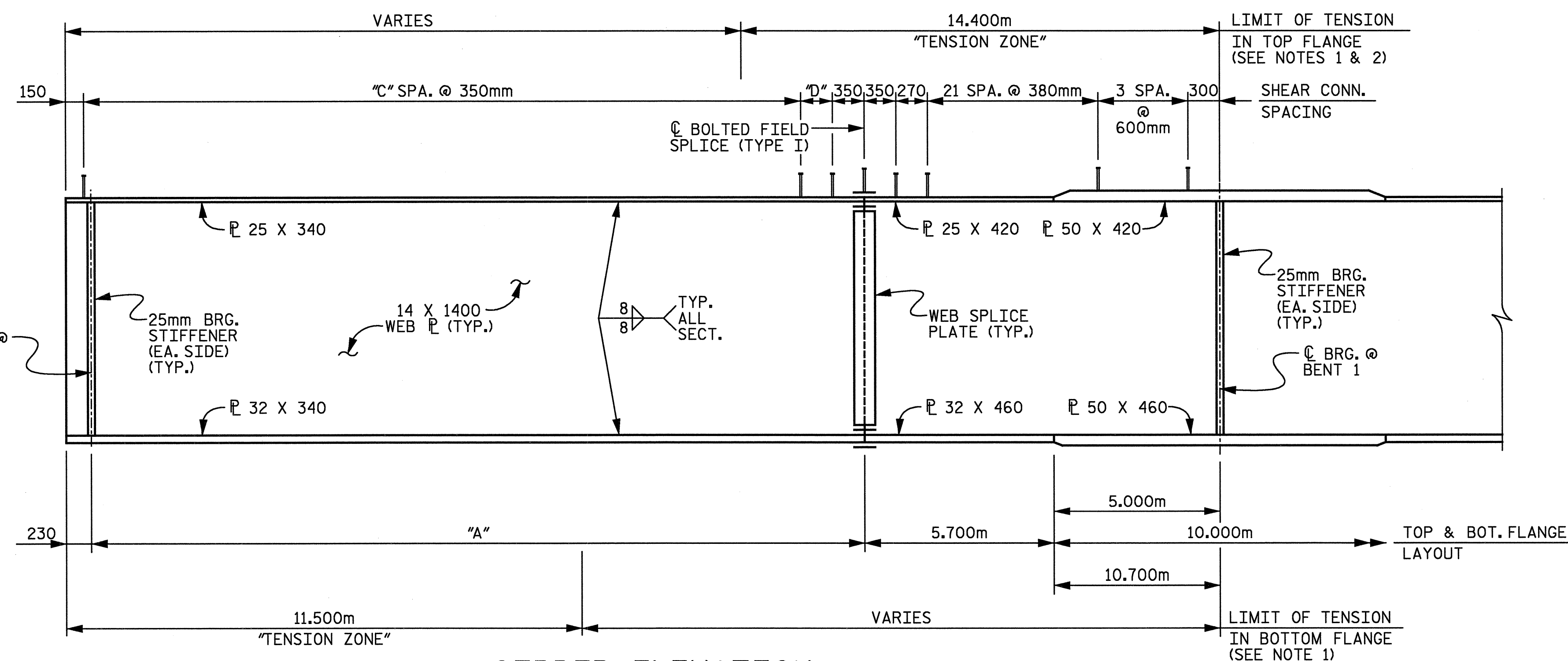


- NOTES:**
- SEE "STRUCTURAL STEEL DETAILS" SHEET FOR STEEL NOTES, CHARNY V-NOTCH TESTING REQUIREMENTS AND SHOP SPLICE DETAILS.
 - NO WELDING OF FORMS OR FALSEWORK TO THE TOP FLANGE WILL BE PERMITTED IN THE TENSION ZONE.
 - ALL DIMENSIONS ON THIS SHEET ARE HORIZONTAL UNLESS NOTED OTHERWISE.
 - SHEAR CONNECTORS MAY BE MOVED SLIGHTLY, AS NECESSARY, TO AVOID INTERFERENCE WITH GIRDER SECTION CHANGES AND HOLES FOR THE BOLTED FIELD SPLICE.
 - SEE "GIRDER DIMENSIONS" TABLE ON "FRAMING PLAN AND GIRDER DETAILS SPAN B" SHEET FOR VARIABLE DIMENSIONS AND SHEAR CONNECTOR QUANTITY AND SPACING.

FRAMING PLAN



SHEAR CONNECTOR DETAIL (GIRDER)



GIRDER ELEVATION

(CONNECTOR P'S AND INTERMEDIATE STIFFENERS NOT SHOWN FOR CLARITY)

PROJECT No. R-2552C
 JOHNSTON COUNTY
 STATION: POS 16+52.599 -Y4- =
 POC 9+28.021 -FLYOVER-

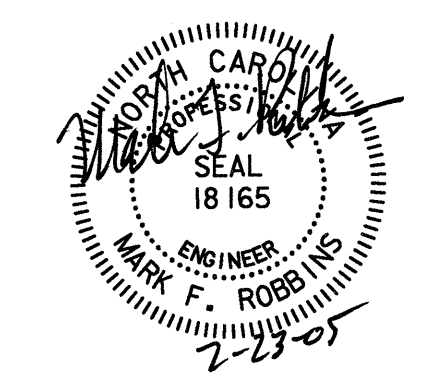
SHEET 1 OF 2

REV.	NO.	DATE
1	1	
2	2	

STATE OF NORTH CAROLINA
 DEPARTMENT OF TRANSPORTATION
 RALEIGH

FRAMING PLAN AND GIRDER DETAILS SPAN "A"

NO.	BY	DATE
1	WBS, LGH	9-04
2	TVR	12-04



RALPH WHITEHEAD ASSOCIATES, INC.
 CONSULTING ENGINEERS
 P.O. BOX 35624 CHARLOTTE, N.C. 28235

DRAWN BY: WBS, LGH DATE: 9-04 DWG. NO.: D-1748.09
 CHECKED BY: TVR DATE: 12-04

SHEET NO. 5-404
 TOTAL SHEETS 431