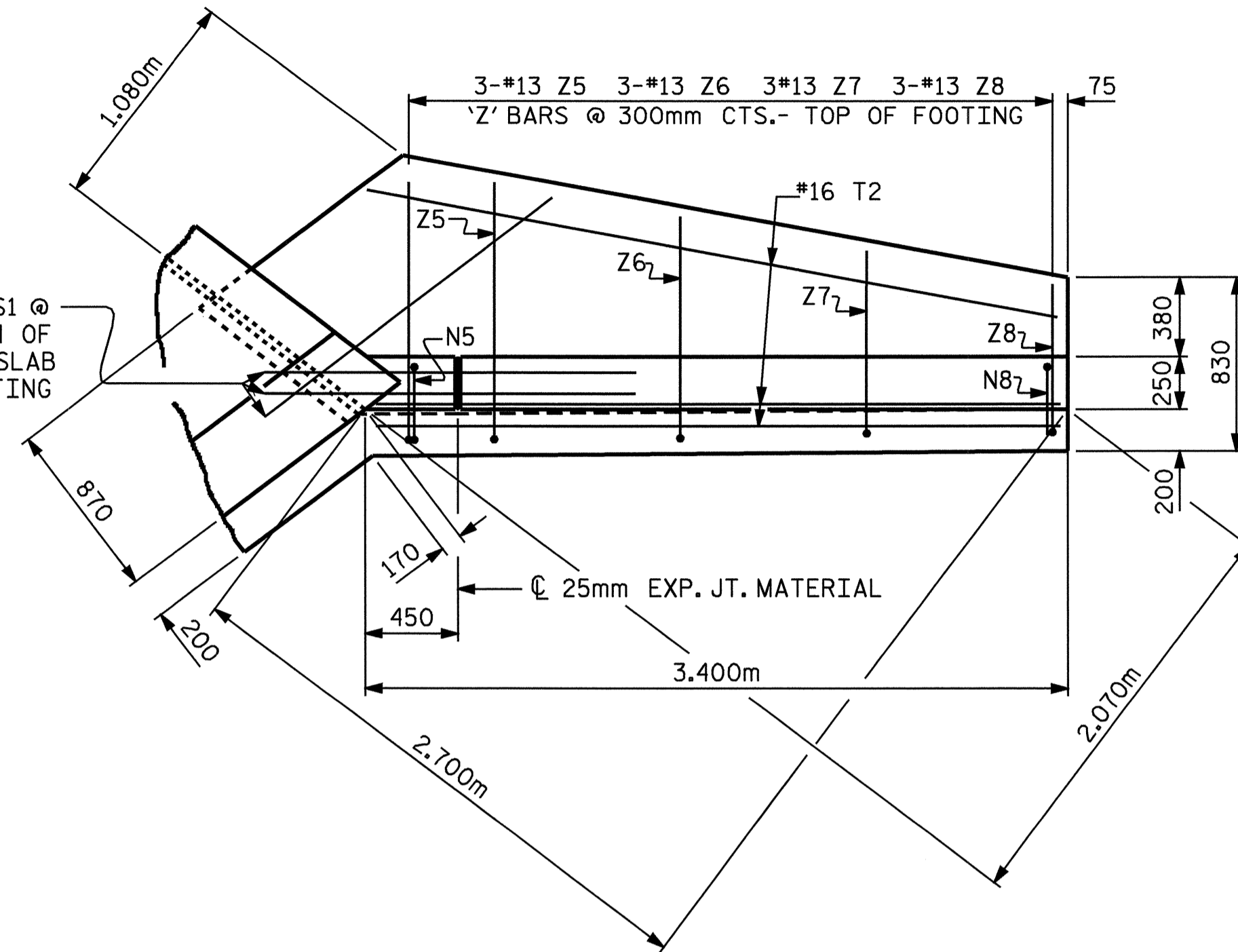
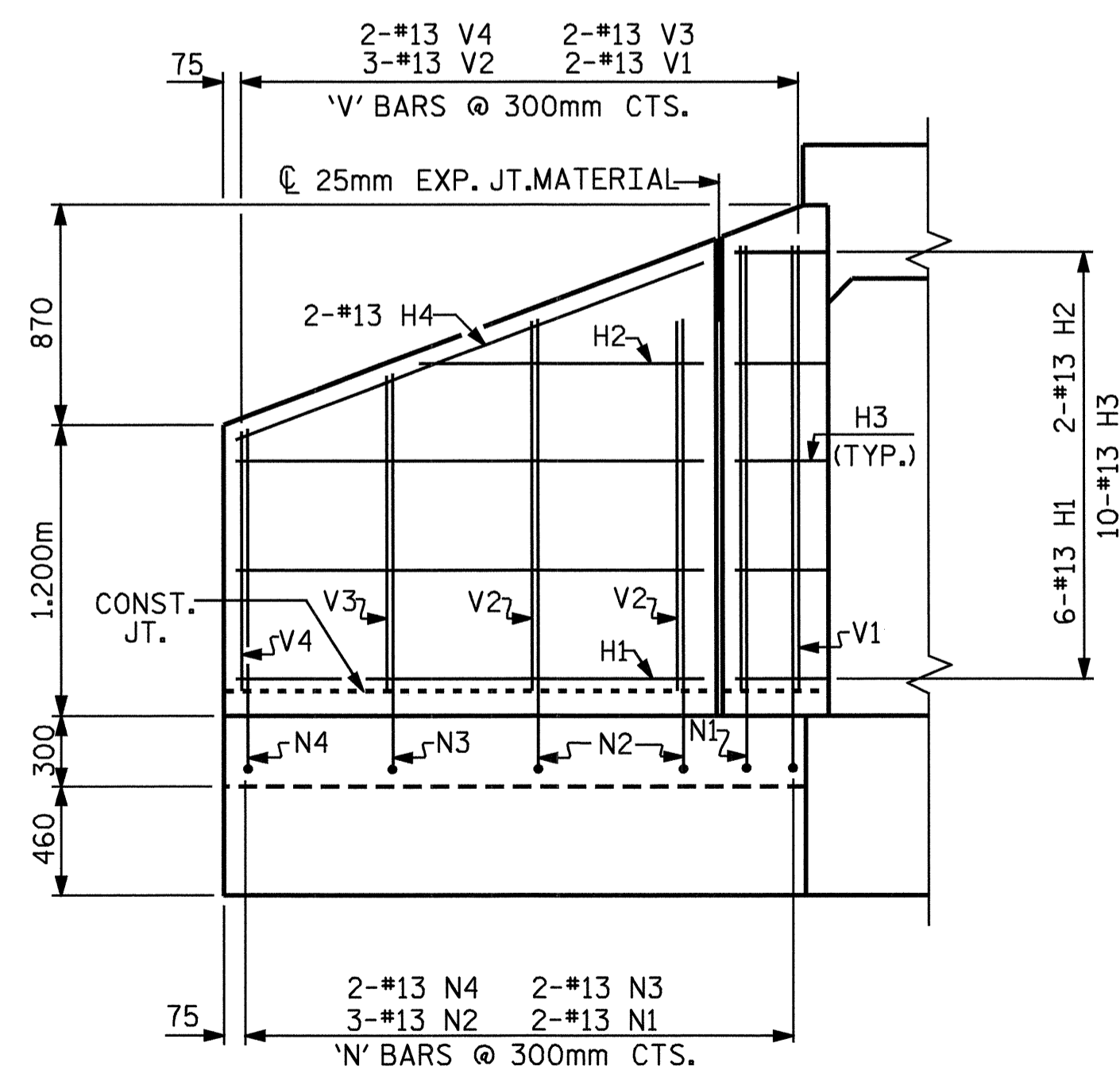


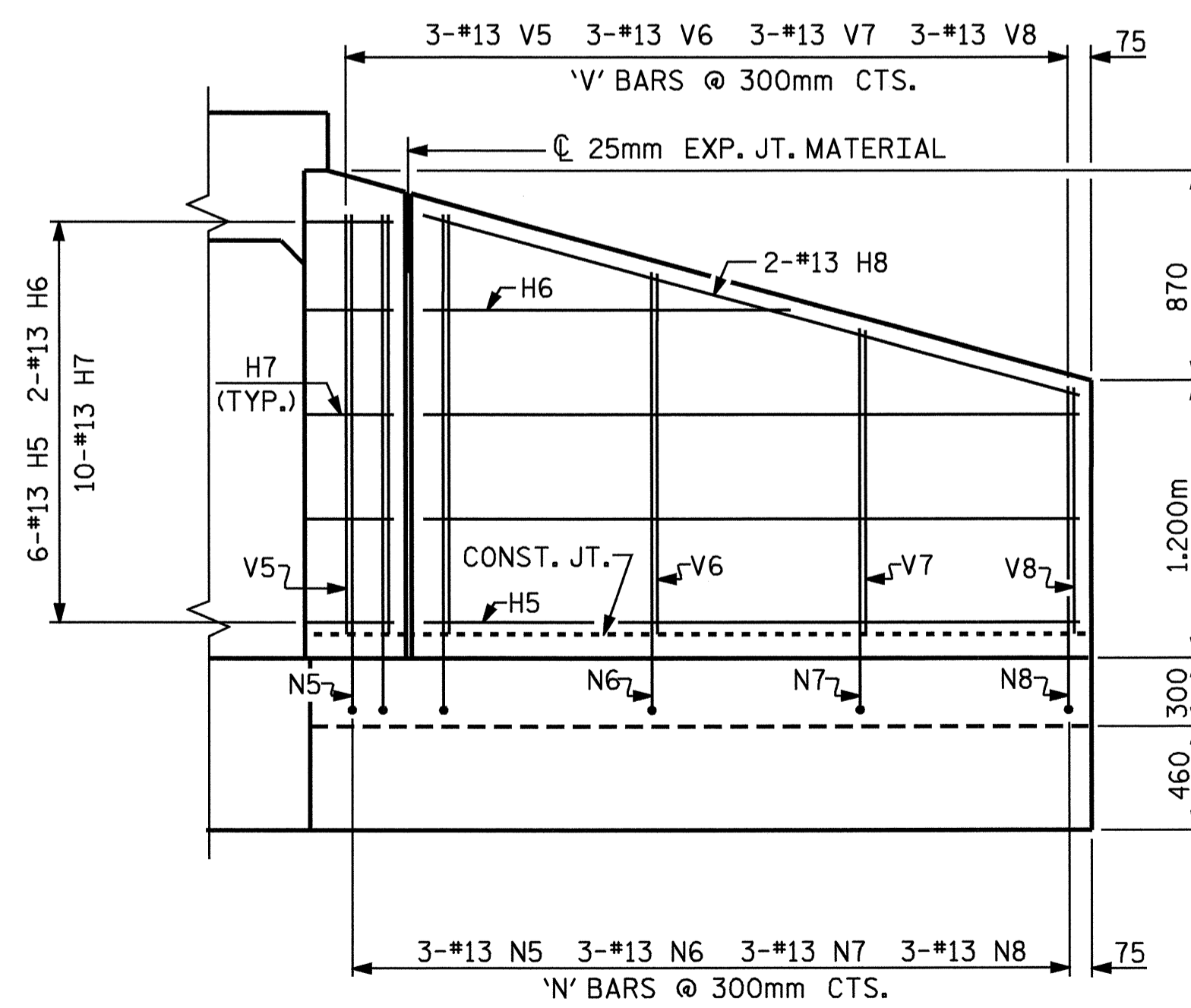
PLAN W2



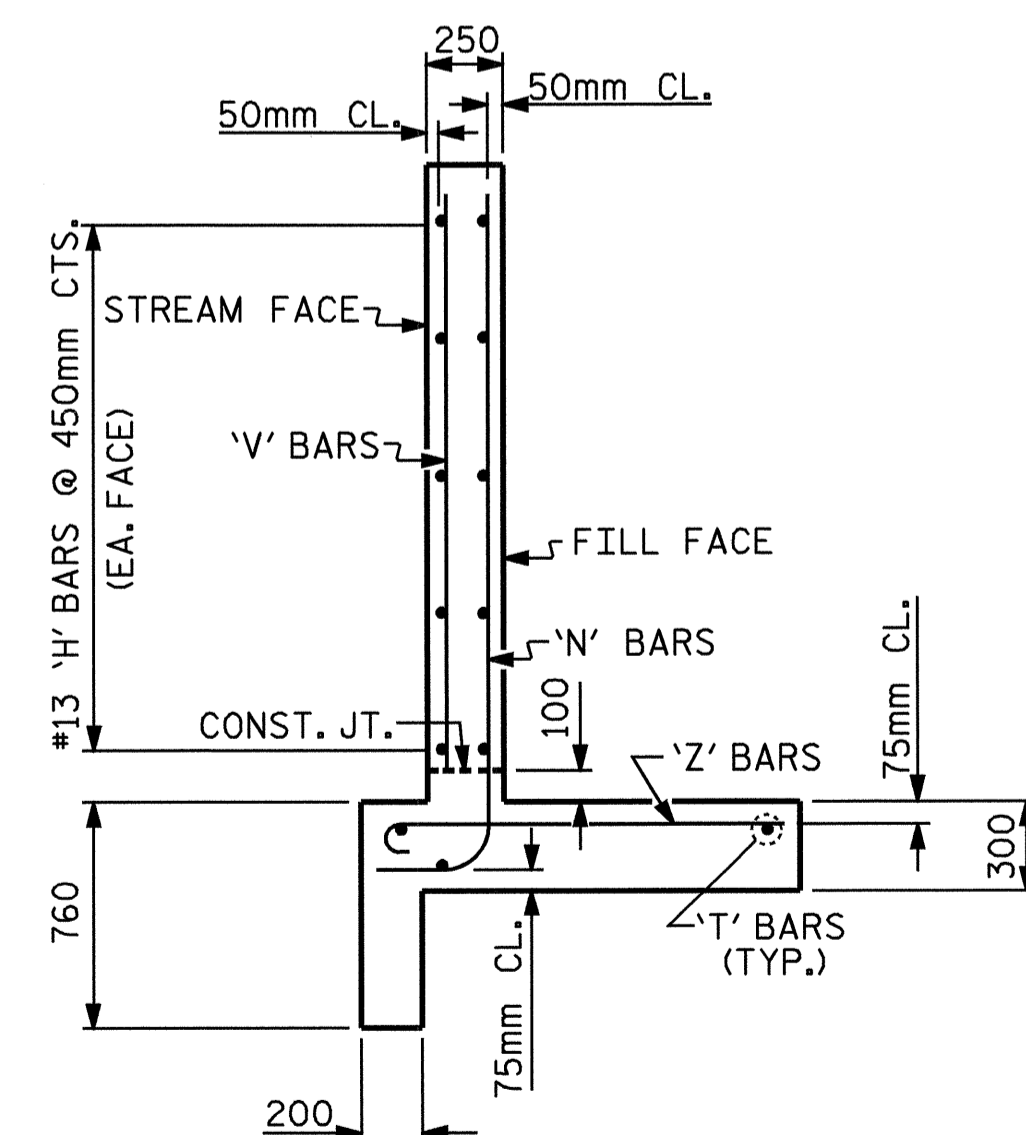
PLAN W1



ELEVATION W2



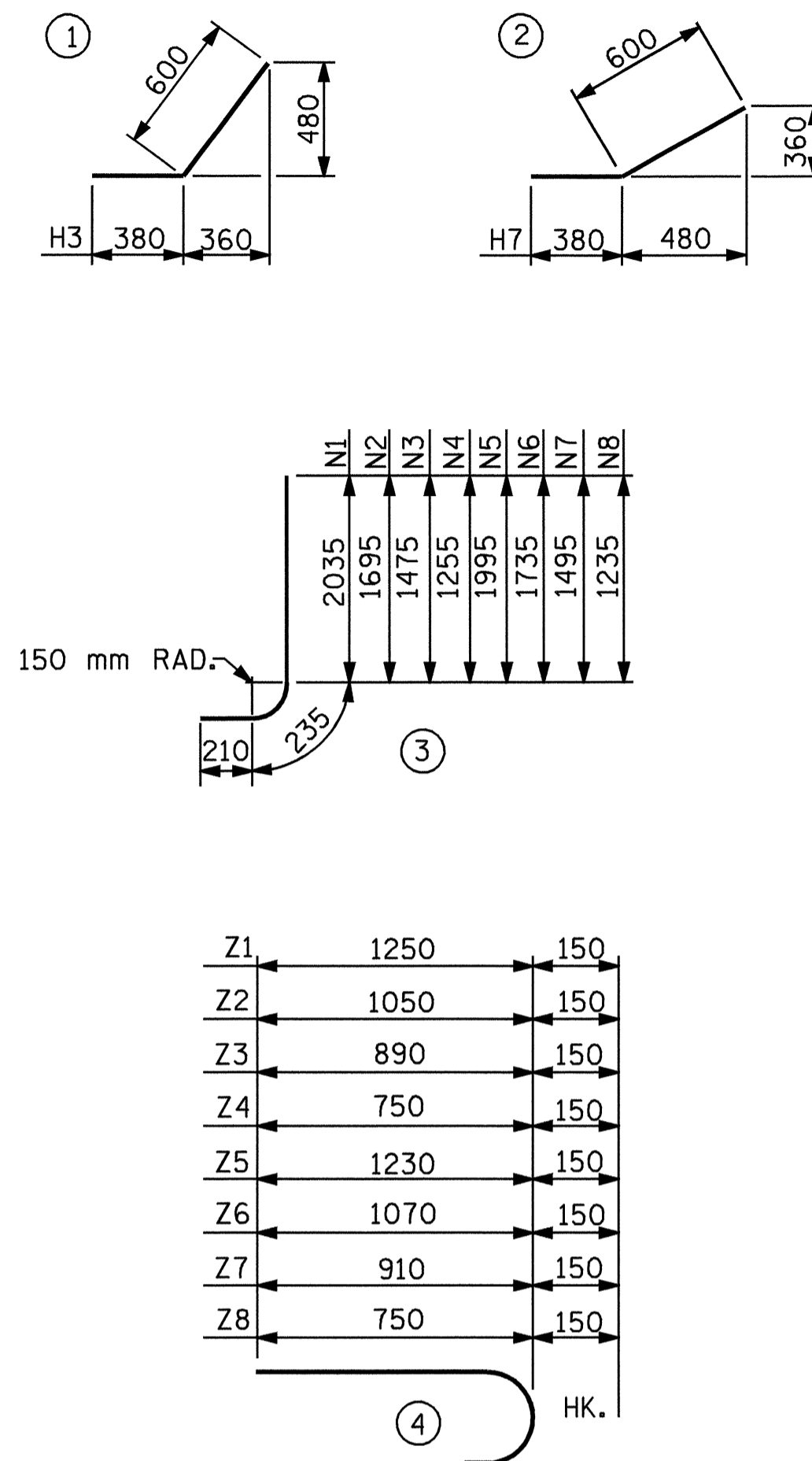
ELEVATION W1



TYPICAL WING SECTION

BAR TYPES

ALL BAR DIMENSIONS ARE OUT TO OUT.



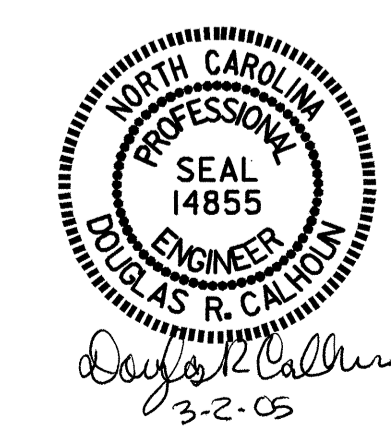
BILL OF MATERIAL INLET WINGS

BAR NO.	SIZE	TYPE	LENGTH	WEIGHT	
H1	6	13	STR	1940	12
H2	2	13	STR	1060	2
H3	10	13		980	10
H4	2	13	STR	2060	4
H5	6	13	STR	2840	17
H6	2	13	STR	1680	3
H7	10	13		980	10
H8	2	13	STR	2940	6
N1	2	13		2480	5
N2	3	13		2140	6
N3	2	13		1920	4
N4	2	13		1700	3
N5	3	13		2440	7
N6	3	13		2180	7
N7	3	13		1940	6
N8	3	13		1680	5
S1	6	19	STR	1800	24
T1	3	16	STR	2500	12
T2	3	16	STR	3400	16
V1	2	13	STR	1860	4
V2	3	13	STR	1520	5
V3	2	13	STR	1300	3
V4	2	13	STR	1080	2
V5	3	13	STR	1820	5
V6	3	13	STR	1560	5
V7	3	13	STR	1320	4
V8	3	13	STR	1060	3
Z1	2	13		1400	3
Z2	3	13		1200	4
Z3	2	13		1040	2
Z4	2	13		900	2
Z5	3	13		1380	4
Z6	3	13		1220	4
Z7	3	13		1060	3
Z8	3	13		900	3

REINFORCING STEEL FOR 2 INLET WINGS 215 kg
 CLASS A CONCRETE
 2 WINGS 5.2 m³
 2 HEADWALLS 0.8 m³
 1 END CURTAIN WALL 0.4 m³
 TOTAL 6.0 m³

ASSEMBLED BY : A. K. PATEL DATE : 1-20-04
 CHECKED BY : T.A.HARRIS DATE : 11/09/04
 DRAWN BY : KJA 6/97
 CHECKED BY : VAP 12/97

FOR WING ORIENTATION, SEE BARREL STANDARD SHEET.



PROJECT NO. R-2552C
 JOHNSTON COUNTY
 STATION: 4+93.000 -LOOP C-

SHEET 4 OF 6

STATE OF NORTH CAROLINA
 DEPARTMENT OF TRANSPORTATION
 RALEIGH
 INLET WINGS FOR
 CONCRETE BOX CULVERT
 H = 1.800m SLOPE 2:1
 105° SKEW

REVISIONS						SHEET NO.
NO.	BY:	DATE:	NO.	BY:	DATE:	C-34
1			3			TOTAL SHEETS 42
2			4			