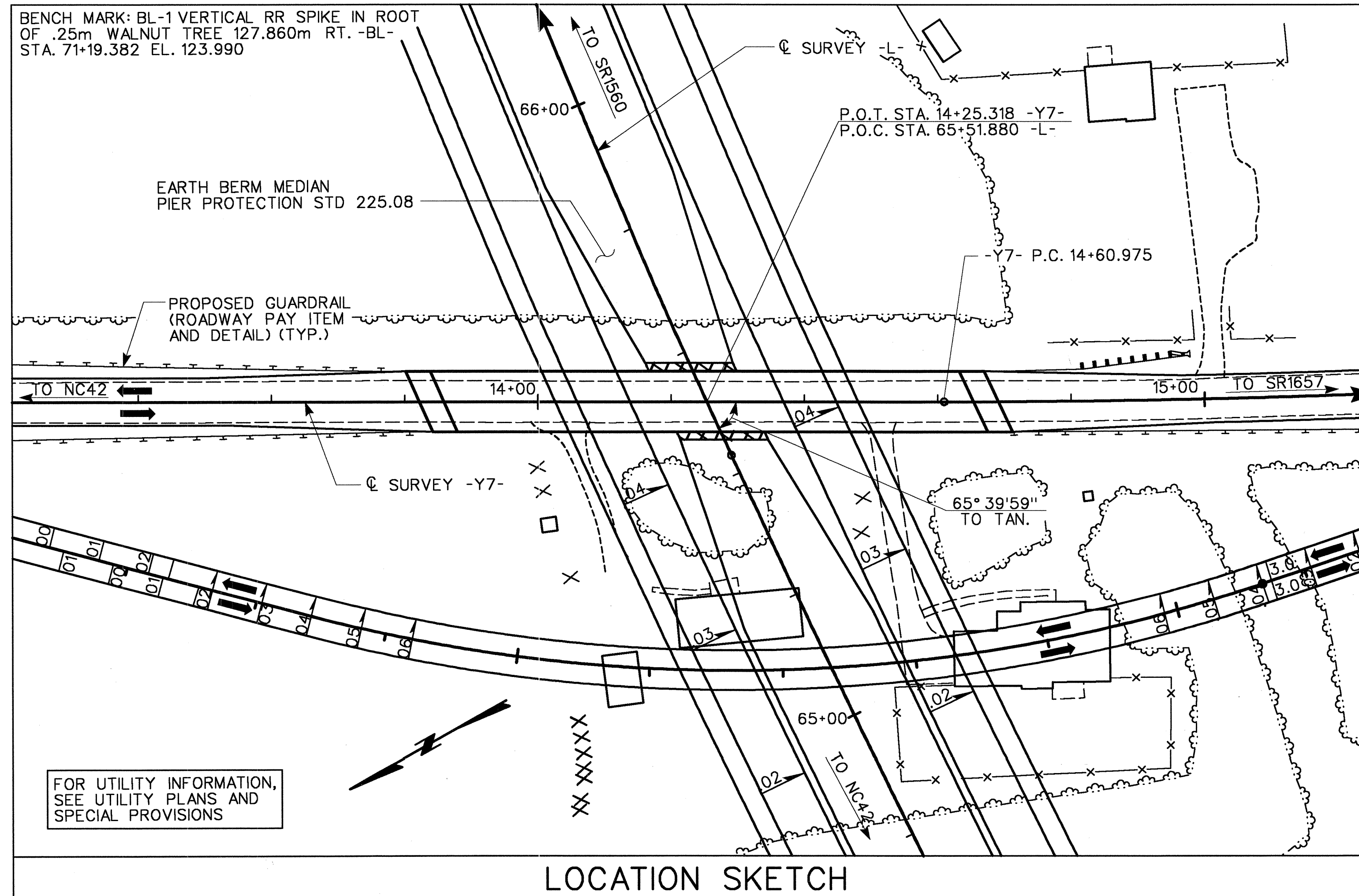


NOTES

- ALL DIMENSIONS ARE IN MILLIMETERS UNLESS OTHERWISE NOTED.
- ALL ELEVATIONS ARE IN METERS.
- ASSUMED LIVE LOAD = MS18 OR ALTERNATE LOADING.
- THIS BRIDGE HAS BEEN DESIGNED IN ACCORDANCE WITH THE REQUIREMENTS OF THE "STANDARD SPECIFICATIONS FOR SEISMIC DESIGN OF HIGHWAY BRIDGES" FOR SEISMIC PERFORMANCE CATEGORY A.
- THIS BRIDGE HAS BEEN DESIGNED BY THE STRENGTH DESIGN METHOD AS SPECIFIED IN AASHTO STANDARD SPECIFICATIONS.
- FOR OTHER DESIGN DATA AND GENERAL NOTES, SEE SHEET SNSM.

- PILES FOR END BENT NO. 1 AND 2, AND BENT NO. 1, SHALL BE DRIVEN TO A MINIMUM BEARING CAPACITY OF 450 KN EACH.
- WHEN DRIVING PILES, THE MAXIMUM BLOW COUNT SHALL NOT BE EXCEEDED.
- STEEL PILE POINTS ARE REQUIRED FOR PILES AT END BENT NO. 1 AND 2 AND AT BENT NO. 1. SEE SPECIAL PROVISION FOR STEEL PILE POINTS.
- BOULDERS MAY BE PRESENT IN THE AREAS OF PILE INSTALLATION. BOULDERS MAY NEED TO BE REMOVED IN ORDER TO ACHIEVE THE MINIMUM PILE EMBEDMENT OF 3.0 METERS. NO PAYMENT WILL BE MADE FOR BOULDER REMOVAL. THE COST WILL BE INCIDENTAL TO THE PILES.
- FOR SUBMITTAL OF WORKING DRAWINGS, SEE SPECIAL PROVISIONS.
- FOR METRIC STRUCTURAL STEEL, SEE SPECIAL PROVISIONS.
- FOR FALSEWORK AND FORMWORK, SEE SPECIAL PROVISIONS.
- WORK SHALL NOT BE STARTED ON THIS BRIDGE UNTIL ROADWAY SECTION HAS BEEN EXCAVATED.
- ALL STRUCTURAL STEEL SHALL BE AASHTO M270 GRADE 50W (345W) AND PAINTED IN ACCORDANCE WITH SYSTEM 4 OF ARTICLE 442-7 OF THE STANDARD SPECIFICATIONS UNLESS OTHERWISE NOTED ON THE PLANS.
- FOR CRANE SAFETY, SEE SPECIAL PROVISIONS.



TOTAL BILL OF MATERIAL

	FOUNDATION EXCAVATION	REINFORCED CONCRETE DECK SLAB	GROOVING BRIDGE FLOORS	CLASS A CONCRETE	BRIDGE APPROACH SLABS	REINFORCING STEEL	SPIRAL COLUMN REINFORCING STEEL	STRUCTURAL STEEL	HP310x79 STEEL PILES	STEEL PILE POINTS	CONCRETE BARRIER RAIL	100mm SLOPE PROTECTION	ELASTOMERIC BEARINGS	POT BEARINGS	EVAZOTE JOINT SEALS	
	LUMP SUM	m2	m2	m3	LUMP SUM	KG.	KG.	APPROX. KG.	NO.	METERS	EACH	METERS	METRIC TONS	LUMP SUM	LUMP SUM	LUMP SUM
SUPERSTRUCTURE		784.9	807.1		LUMP SUM			107,209			155.808		LUMP SUM	LUMP SUM	LUMP SUM	
END BENT 1				21.9		2,117			9	72.0	9	185				
BENT 1	LUMP SUM			30.7		3,479	365		18	144.0	18					
END BENT 2				21.1		1,951			9	54.0	9	192				
TOTAL	LUMP SUM	784.9	807.1	73.5	LUMP SUM	7,547	365	107,209	36	270.0	36	155.808	377	LUMP SUM	LUMP SUM	LUMP SUM

PROJECT NO. R-2552B

JOHNSTON COUNTY

STATION: 65+51.880 -L-
14+25.318 -Y7-

SHEET 3 of 3

STATE OF NORTH CAROLINA
DEPARTMENT OF TRANSPORTATION
RALEIGH

GENERAL DRAWING
FOR BRIDGE ON SR 1554
OVER US 70 BYPASS
BETWEEN NC42 & SR1657



1-13-04

REVISIONS				SHEET NO.
NO.	BY:	DATE:	NO.	DATE:
1			3	
2			4	

S-3
TOTAL SHEETS
431



1616 E. MILLBROOK RD., SUITE 310
RALEIGH, NORTH CAROLINA 27609
PHONE (919) 876-6888
FAX (919) 876-6848

DRAWN BY : SD DATE : 8/03
CHECKED BY : JL DATE : 9/03