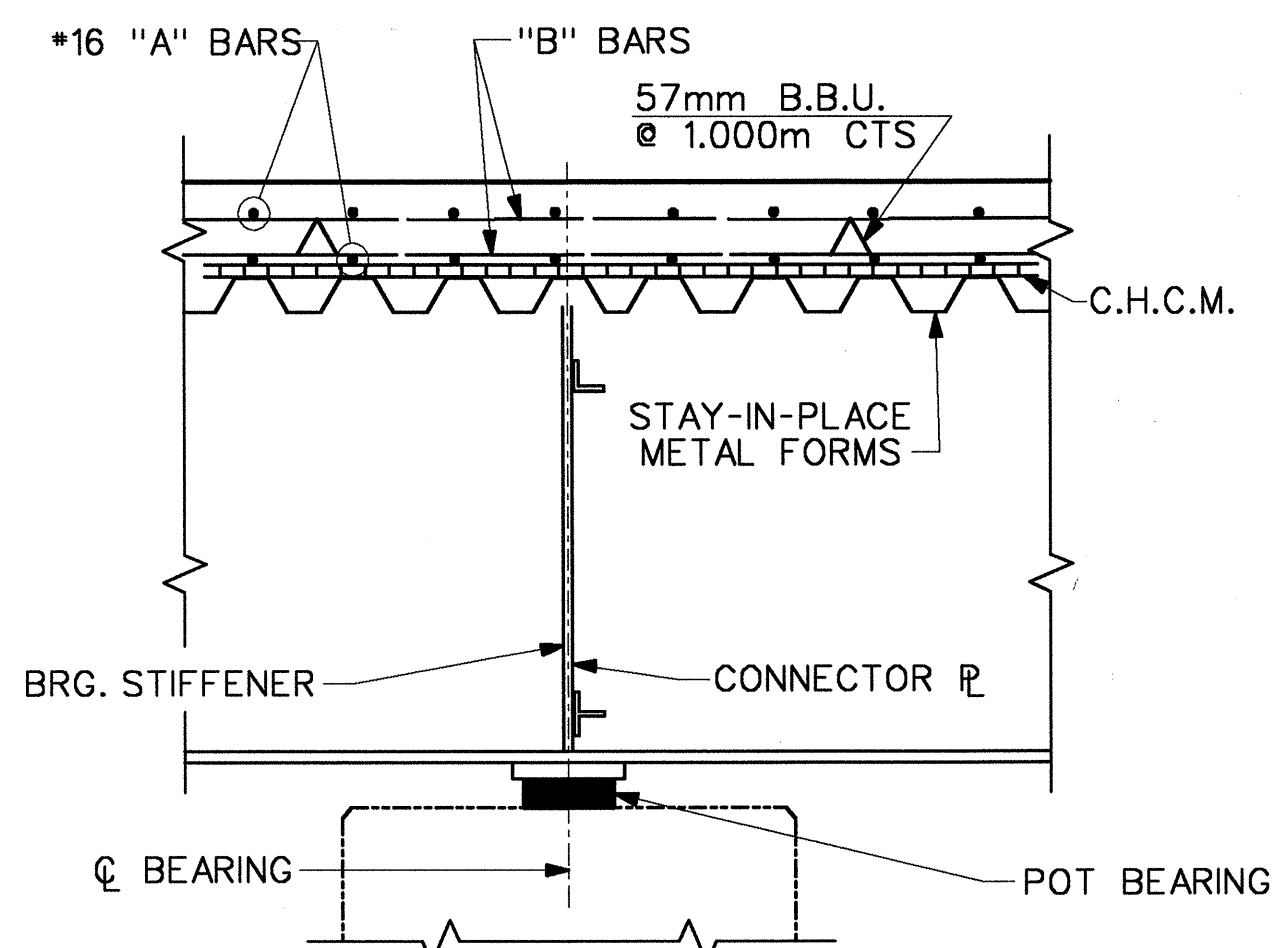
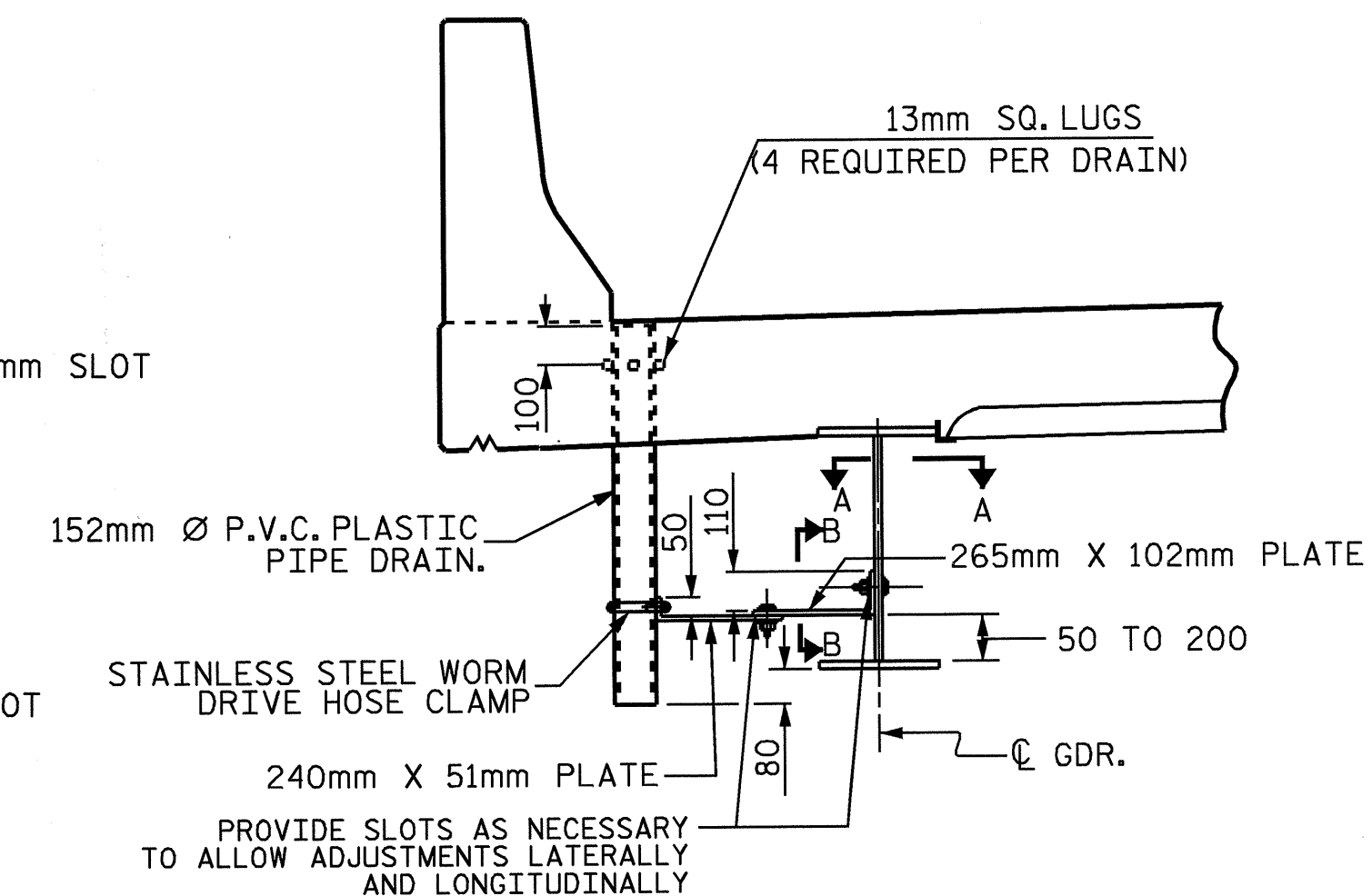
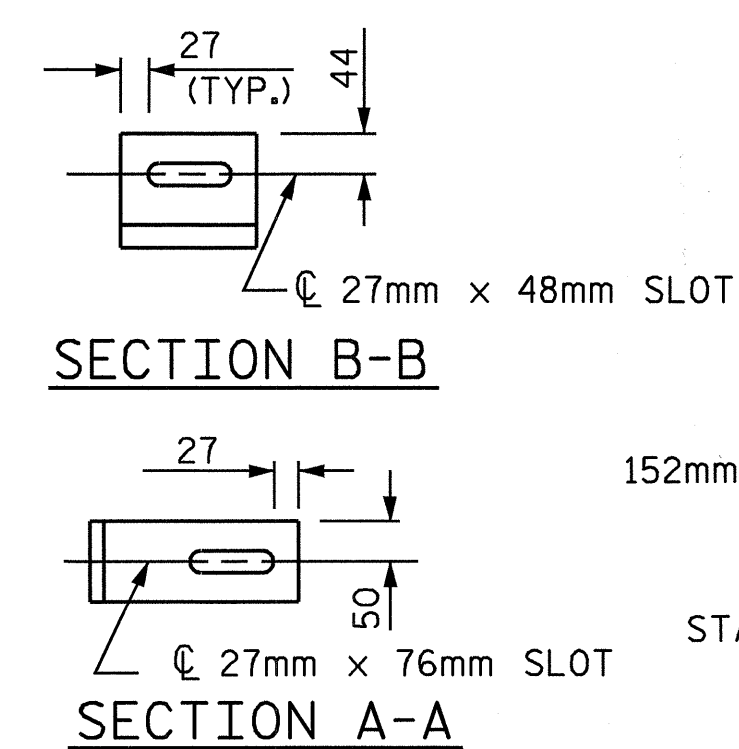


SECTION THRU END BENT

* #16 "G" BAR MAY BE SHIFTED SLIGHTLY, AS NECESSARY, TO CLEAR REINFORCING STEEL & STIRRUPS.

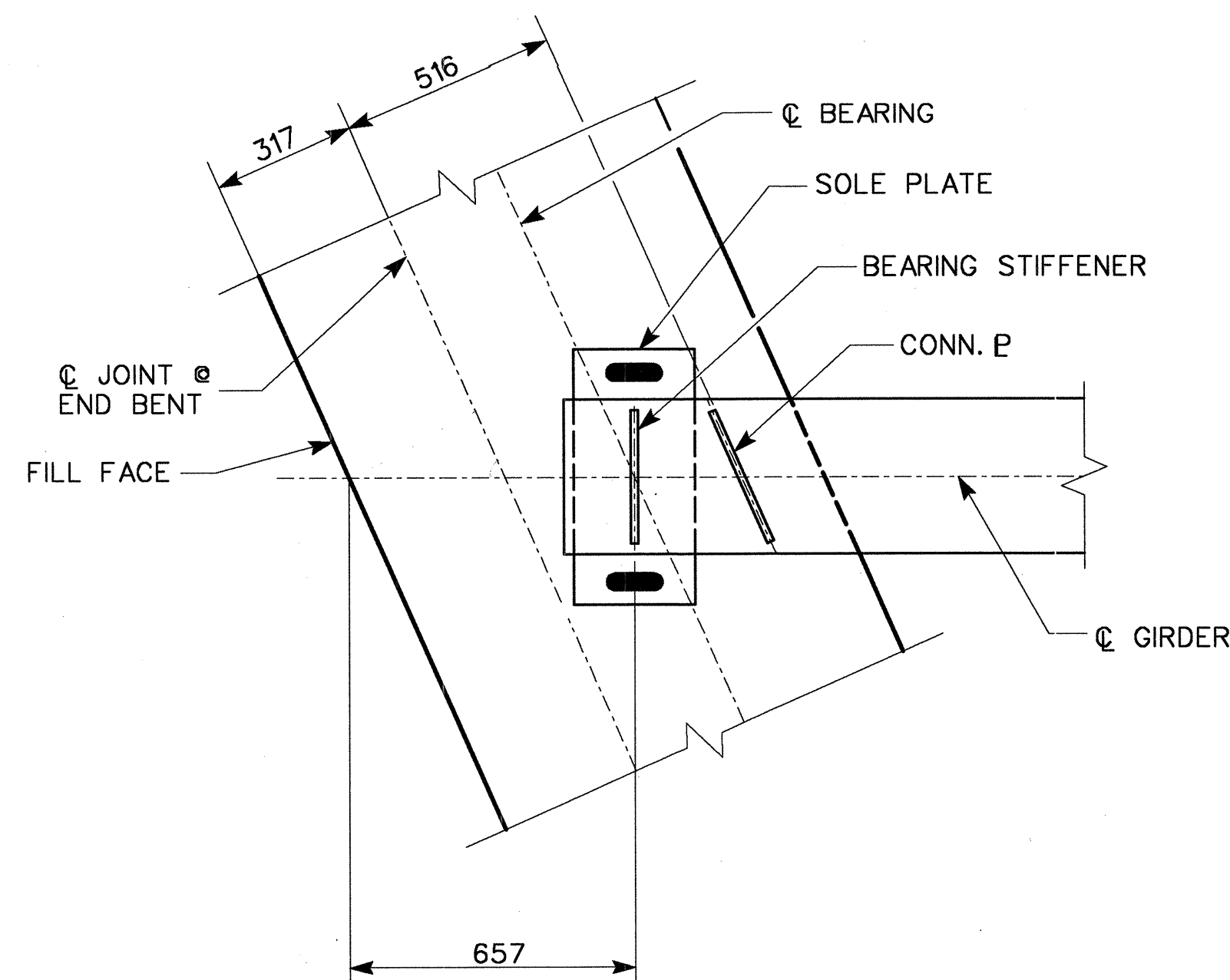


TYP. SECTION THRU CROSSFRAME @ BENT 1

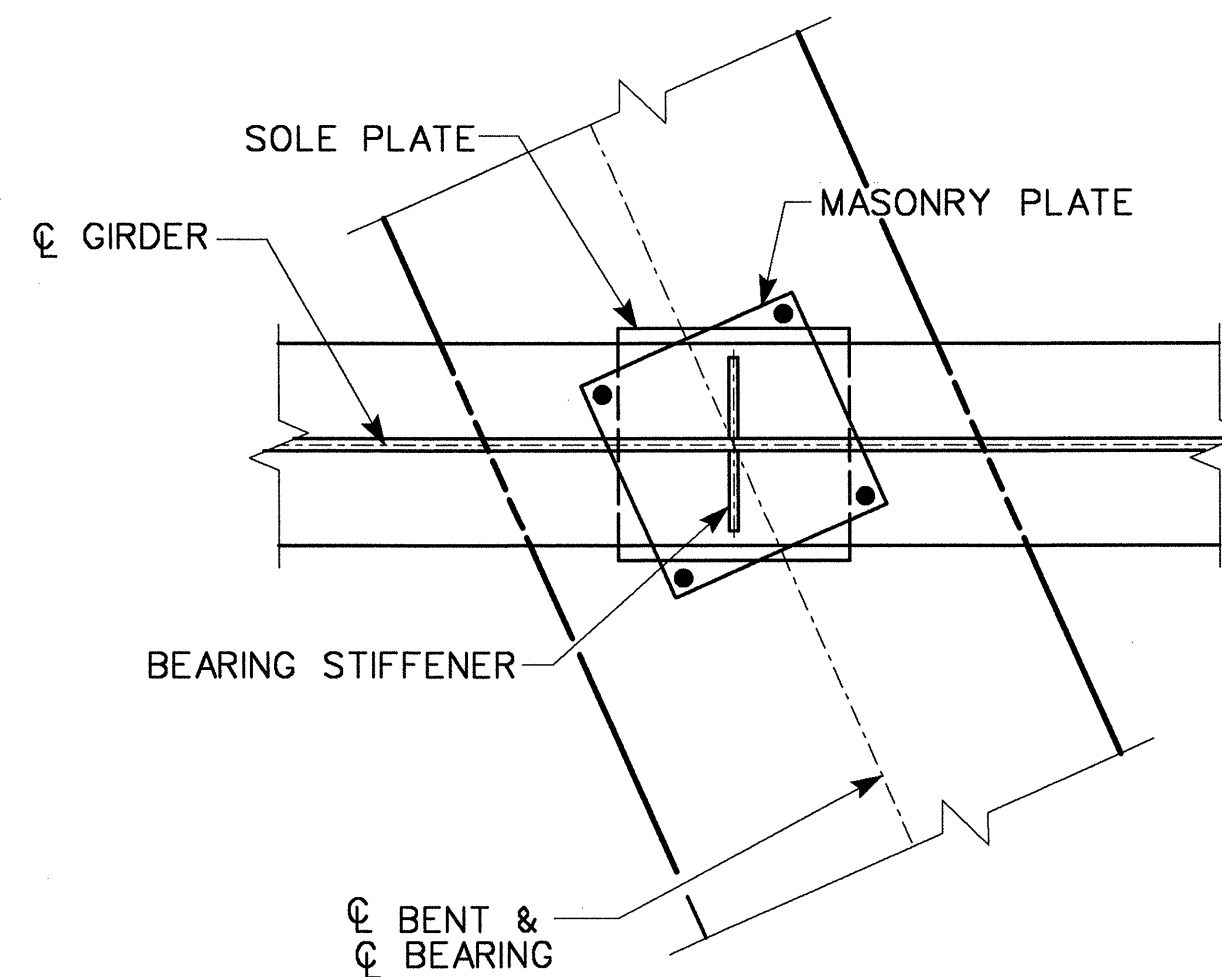


DRAIN CONNECTOR DETAIL (14 REQ'D.)

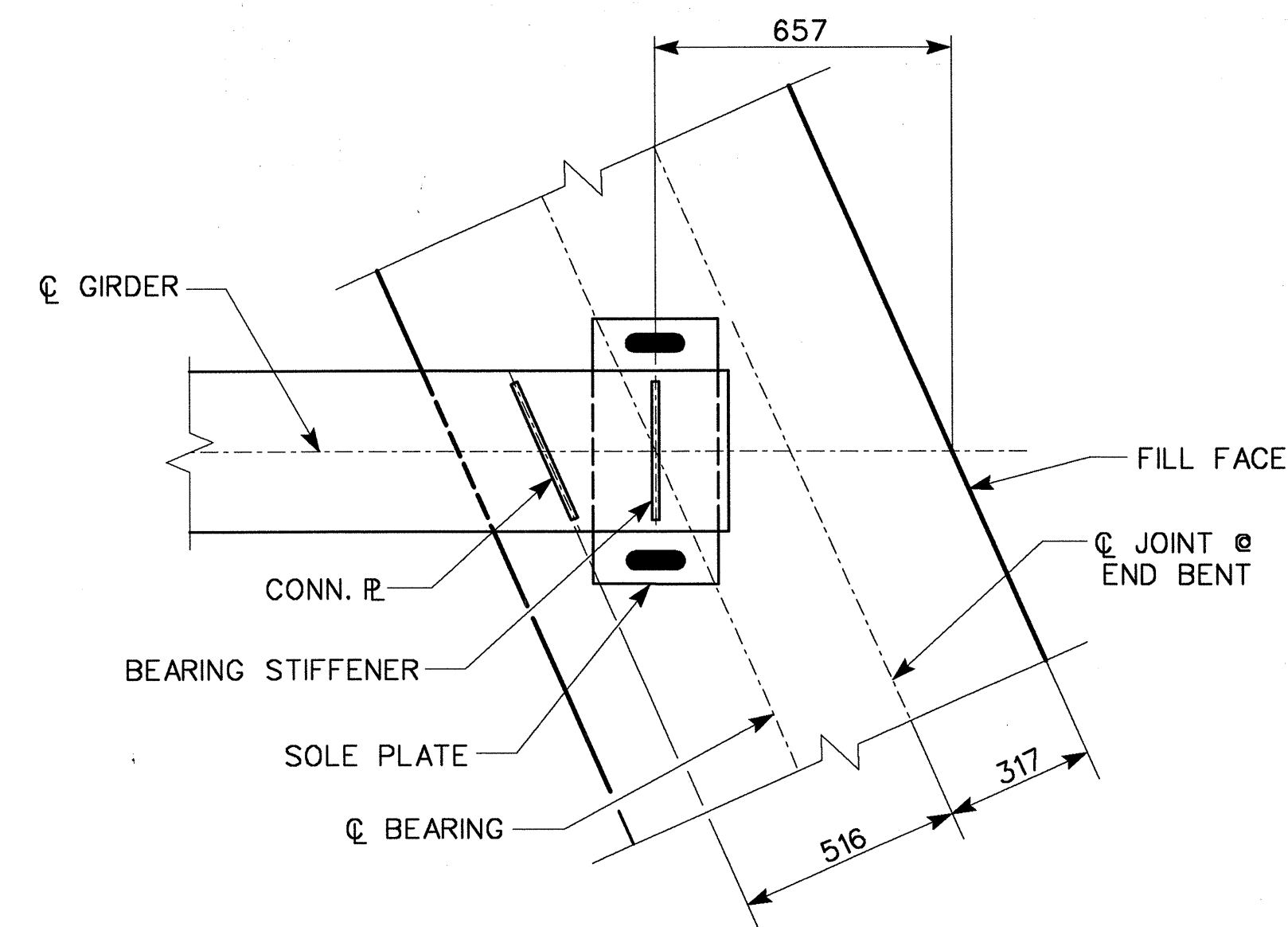
COUPLING IN DRAIN PIPE WILL BE PERMITTED AS APPROVED BY THE ENGINEER.
 4- 13mm SQ. LUGS TO BE GLUED TO THE P.V.C. PLASTIC PIPE AT EQUAL SPACES AROUND THE PIPE DRAIN APPROXIMATELY 100mm FROM THE TOP OF THE PIPE.
 BOLT SIZE TO BE SAME AS DIAPHRAGM AND CROSSFRAME CONNECTIONS. STAINLESS STEEL WORM HOSE CLAMP SHALL BE COMMERCIAL QUALITY.
 PVC PLASTIC DECK DRAINS SHALL BE PAINTED WITH AN APPROVED VINYL PAINT.
 TOP OF FLOOR DRAINS TO BE SET 10mm BELOW SURFACE OF SLAB.



PLAN OF GIRDER @ END BENT 1



PLAN OF GIRDER @ BENT 1



PLAN OF GIRDER @ END BENT 2

PROJECT NO. R-2552B

JOHNSTON COUNTY

STATION: 65+51.880 -L-
14+25.318 -Y7-

SHEET 2 of 2

STATE OF NORTH CAROLINA
 DEPARTMENT OF TRANSPORTATION
 RALEIGH

SUPERSTRUCTURE
 TYPICAL SECTION
 DETAILS



| REVISIONS | | | | SHEET NO. | |
|-----------|-----|-------|-----|-----------|-------|
| NO. | BY: | DATE: | NO. | BY: | DATE: |
| 1 | | | 3 | | |
| 2 | | | 4 | | |



1616 E. MILLBROOK RD., SUITE 310
 RALEIGH, NORTH CAROLINA 27609
 PHONE (919) 876-6888
 FAX (919) 876-6848

DRAWN BY : AR DATE : 8/03
 CHECKED BY : JL DATE : 8/03