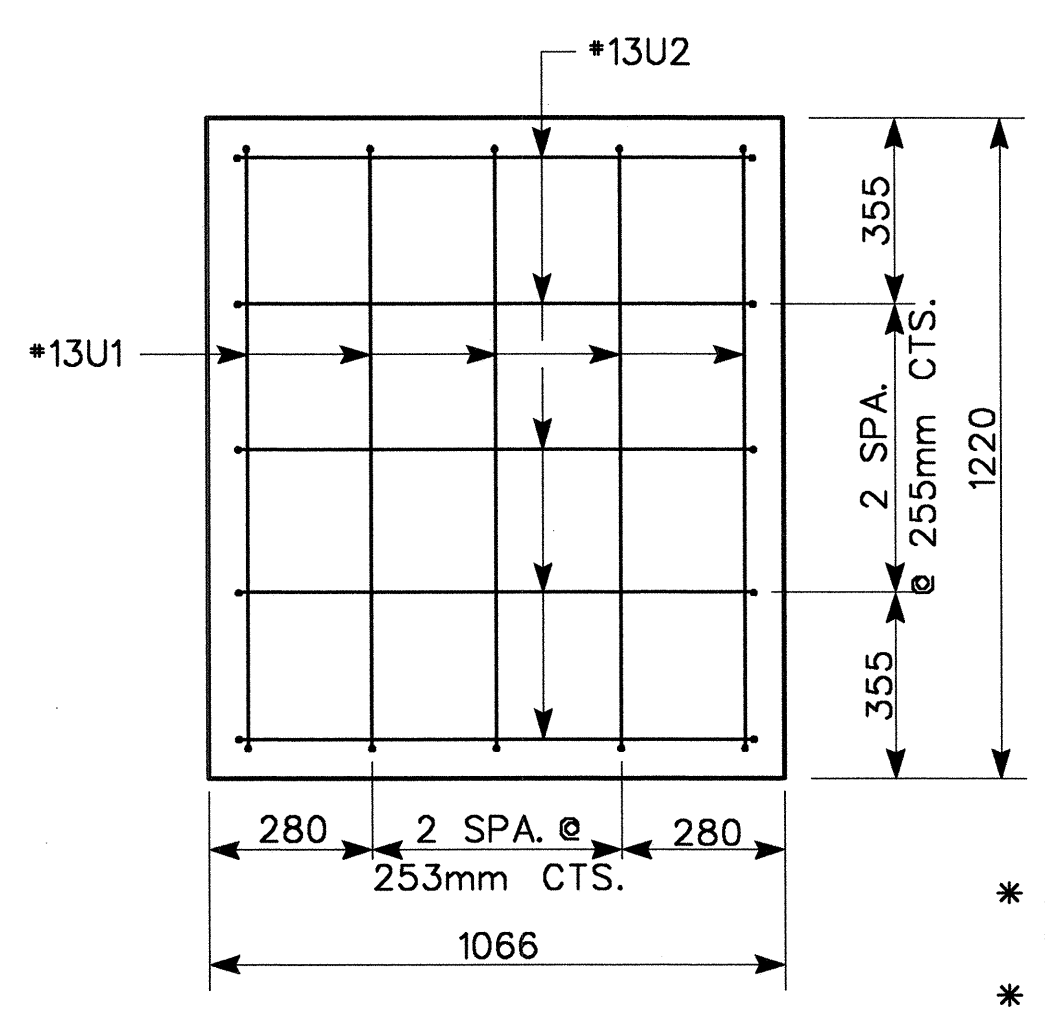
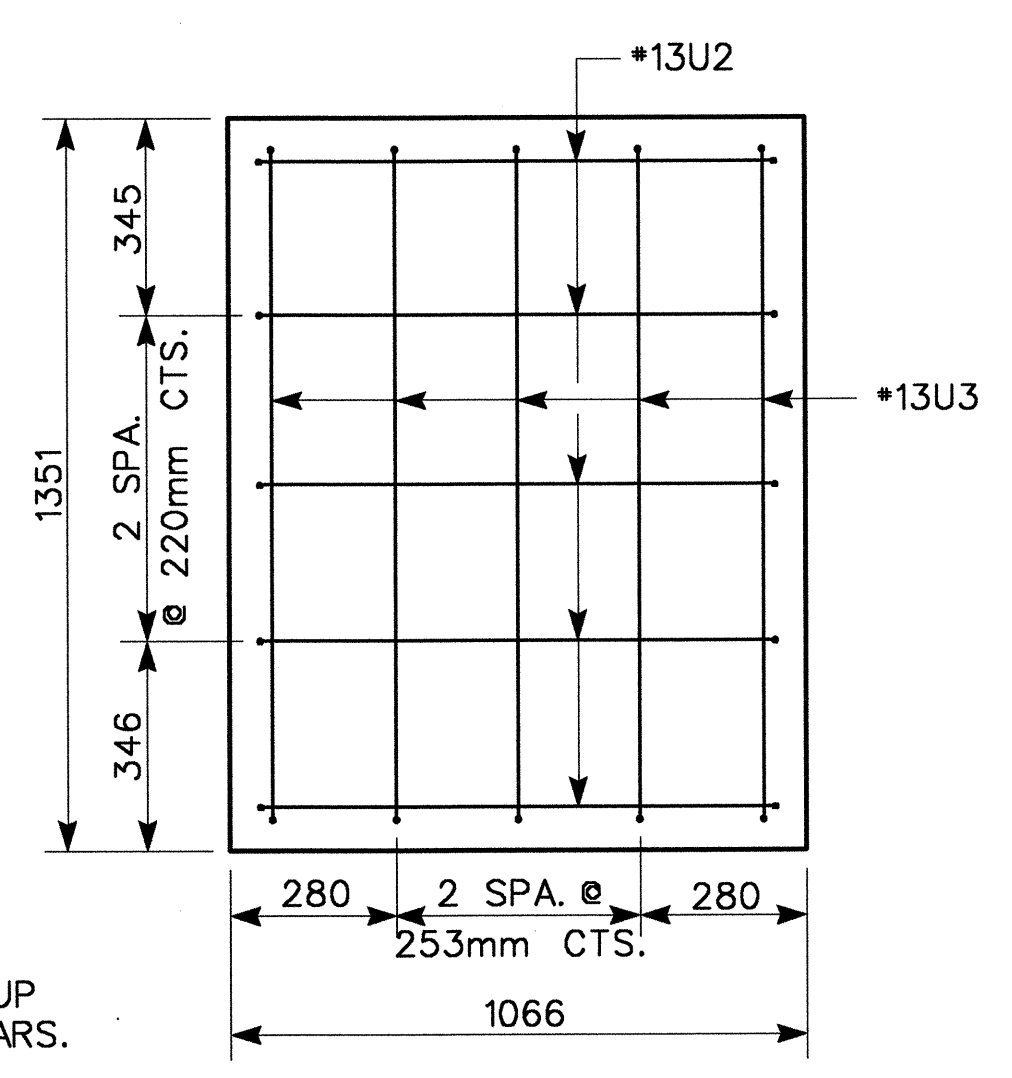


END ELEVATION

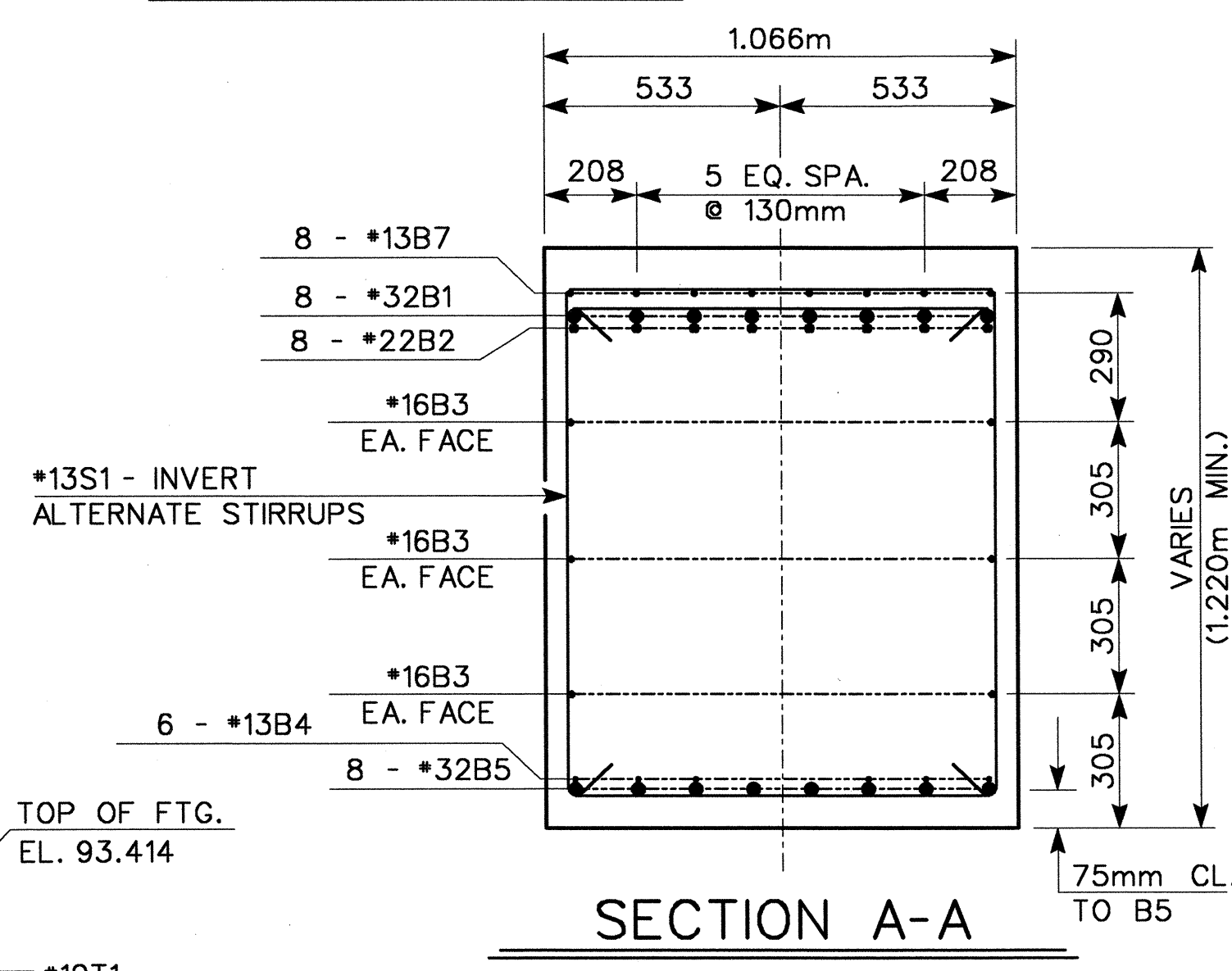
▲ DENOTES BATTER PILES 125:1000 IN DIRECTION OF ARROW



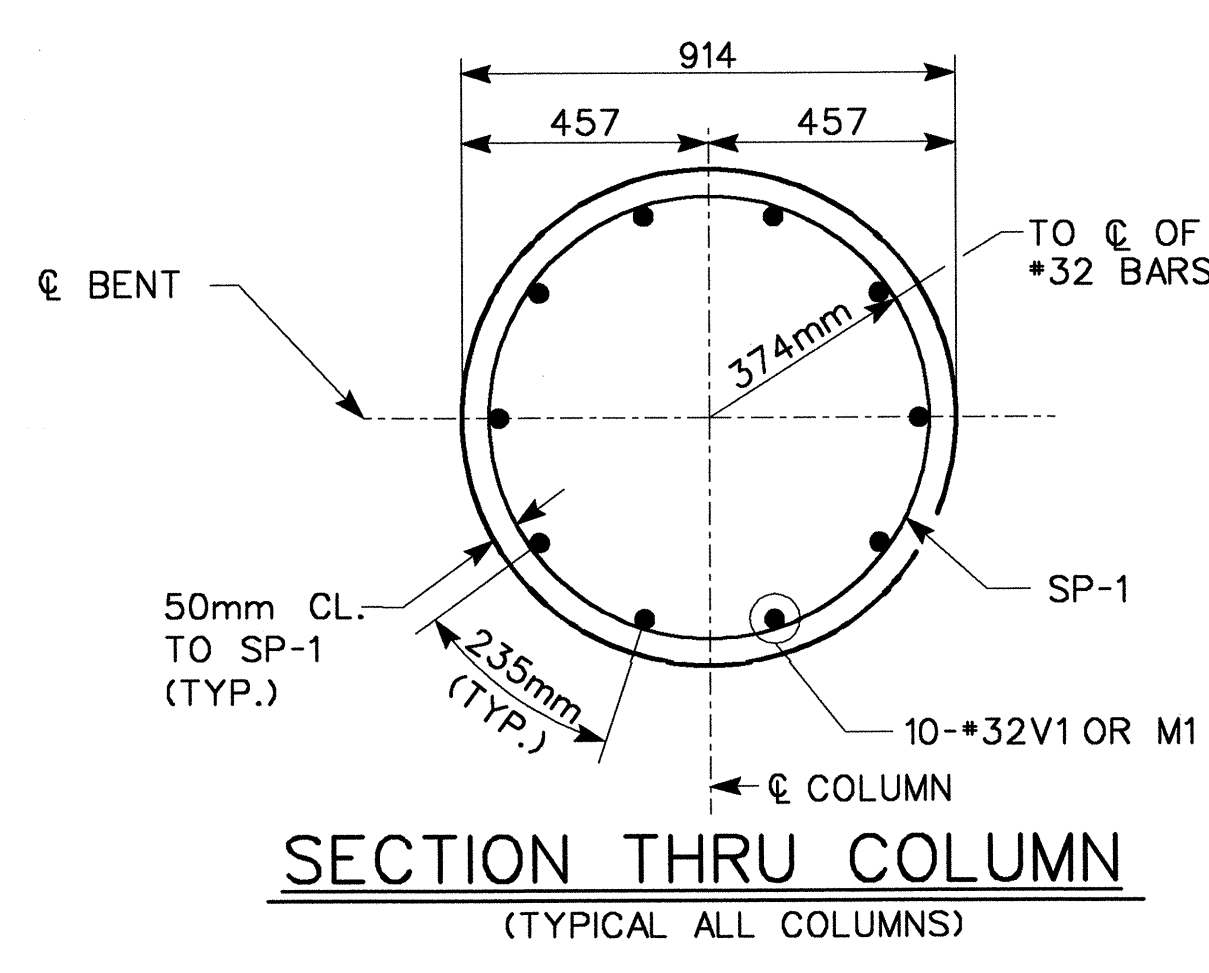
LEFT END VIEW



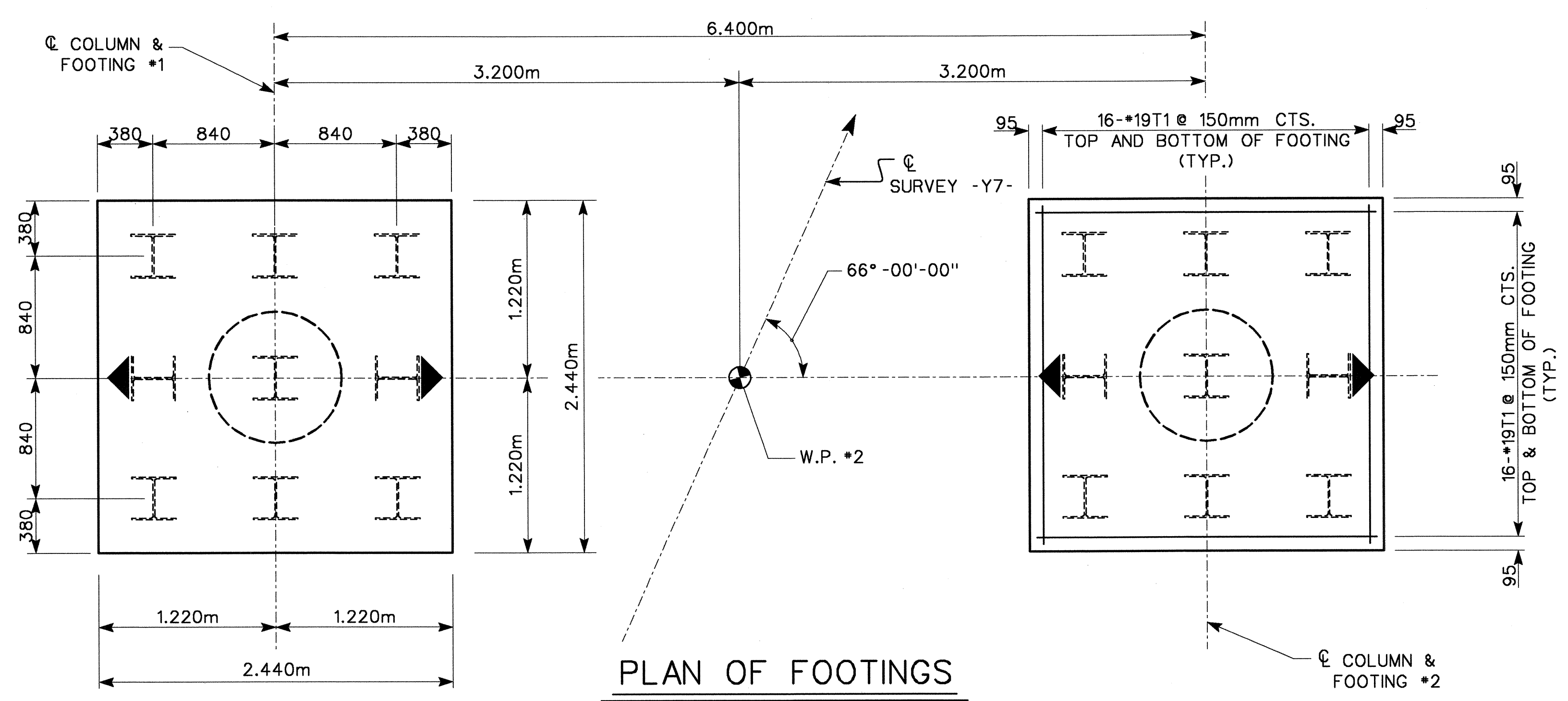
RIGHT END VIEW



SECTION A-A

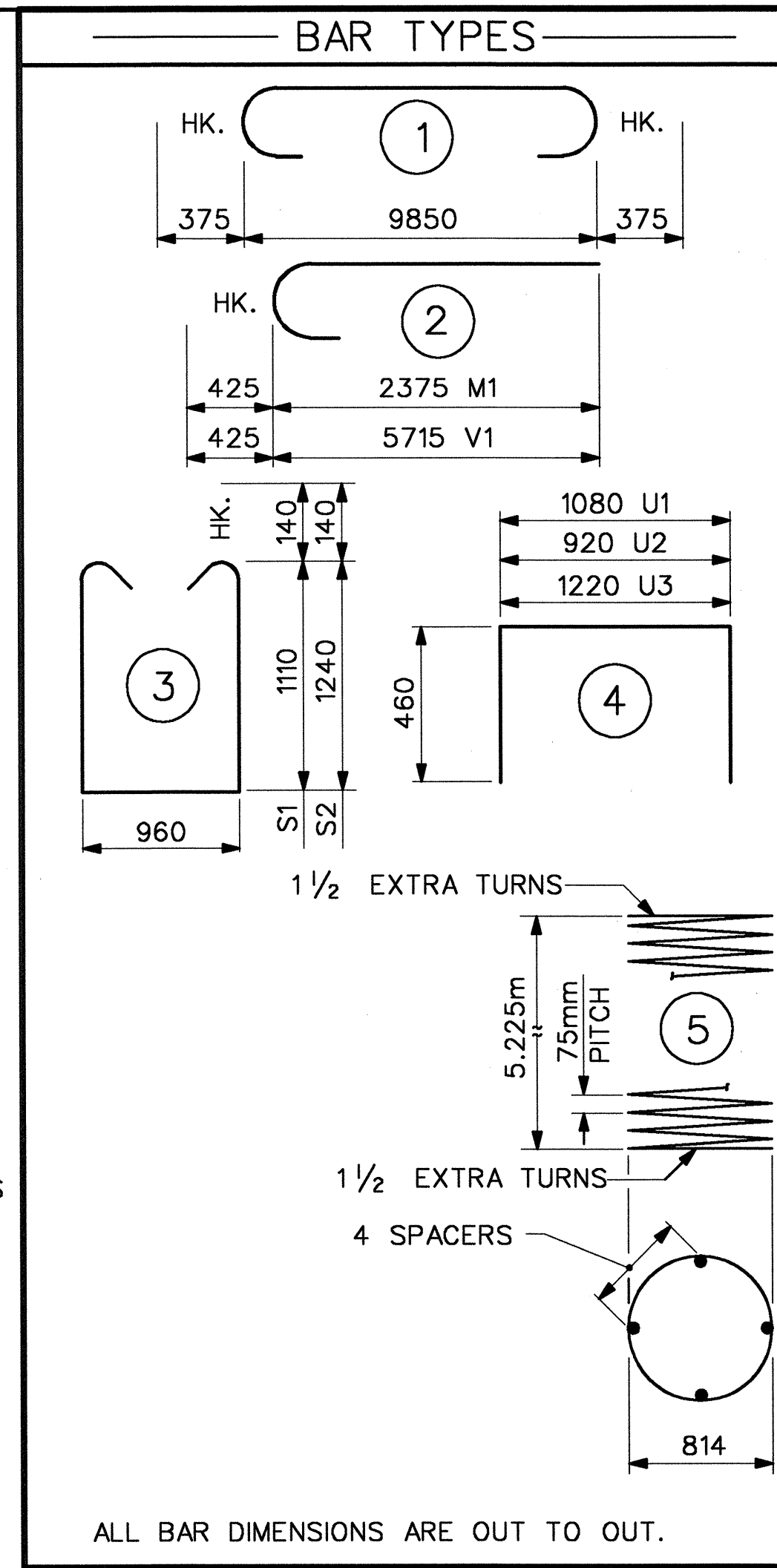


SECTION THRU COLUMN (TYPICAL ALL COLUMNS)



PLAN OF FOOTINGS

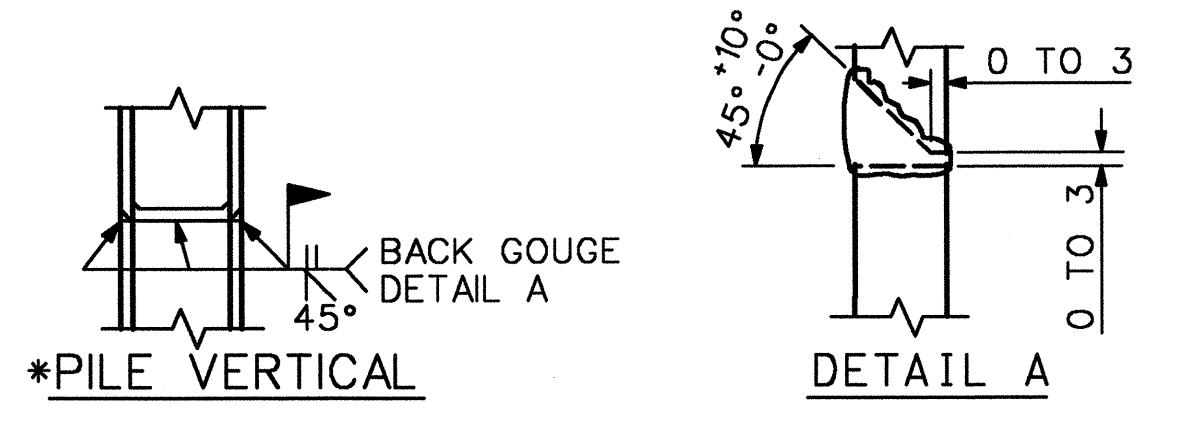
DETAILS SHOWN ARE TYPICAL FOR ALL FOOTINGS. FOR PLACEMENT OF "V" BARS IN FOOTINGS, SEE SECTION THRU COLUMN.



BAR TYPES

BILL OF MATERIAL						
BENT NO. 1						
BAR	NO.	SIZE	TYPE	LENGTH	WEIGHT	
B1	8	32	1	10600	54.3	
B2	8	22	STR	9900	241	
B3	6	16	STR	9900	92	
B4	6	13	STR	5220	31	
B5	8	32	STR	9900	507	
B6	24	13	STR	960	23	
B7	8	13	STR	4060	32	
M1	20	32	2	2800	359	
S1	16	13	3	3460	55	
S2	12	13	3	3720	44	
T1	128	19	STR	2340	669	
U1	6	13	4	2000	12	
U2	43	13	4	1840	79	
U3	3	13	4	2140	6	
V1	20	32	2	6140	786	
REINFORCING STEEL				kg	3479	
SP-1	2	**	5	183780	365	
SPIRAL COLUMN REINFORCING STEEL				kg	365	
CLASS A CONCRETE BREAKDOWN						
POUR #1 FOOTINGS				C.M.	10.3	
POUR #2 COLUMNS				C.M.	6.8	
POUR #3 CAP				C.M.	13.6	
TOTAL				C.M.	30.7	
HP 310x79 STEEL PILES						
NO. 18				METERS	144.0	
STEEL PILE POINTS				EA.	18	

** THE SP-1 SPIRAL REINFORCING STEEL SHALL BE W20 OR D-20 COLD DRAWN WIRE OR #13 PLAIN OR DEFORMED BAR.



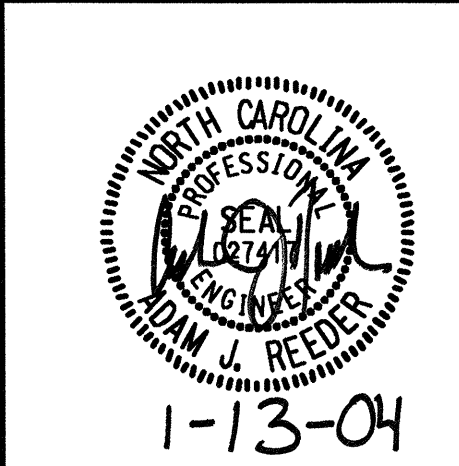
PILE SPLICE DETAILS

*POSITION OF PILE DURING WELDING.

PROJECT NO. R-2552B
 JOHNSTON COUNTY
 STATION: 65+51.880 -L-
 14+25.318 -Y7-
 SHEET 2 of 2

STATE OF NORTH CAROLINA
 DEPARTMENT OF TRANSPORTATION
 RALEIGH

BENT #1
 SUBSTRUCTURE



REVISIONS						SHEET NO.
NO.	BY:	DATE:	NO.	BY:	DATE:	
1			3			TOTAL SHEETS 43
2			4			

PBS&
 1616 E. MILLBROOK RD., SUITE 310
 RALEIGH, NORTH CAROLINA 27609
 PHONE (919) 876-6888
 FAX (919) 876-6848

DRAWN BY: SD DATE: 7/03
 CHECKED BY: JL DATE: 8/03