

SPAN 'A'											
NON-EPOXY COATED REINFORCING STEEL					EPOXY COATED REINFORCING STEEL						
BAR	NO.	SIZE	TYPE	LENGTH	WEIGHT	BAR	NO.	SIZE	TYPE	LENGTH	WEIGHT
A101	190	16	STR	13060	3851	A1101	190	16	STR	13060	3851
A102	2	16	STR	12760	40	A1102	2	16	STR	12760	40
A103	2	16	STR	12400	38	A1103	2	16	STR	12400	38
A104	2	16	STR	12040	37	A1104	2	16	STR	12040	37
A105	2	16	STR	11680	36	A1105	2	16	STR	11680	36
A106	2	16	STR	11320	35	A1106	2	16	STR	11320	35
A107	2	16	STR	10960	34	A1107	2	16	STR	10960	34
A108	2	16	STR	10580	33	A1108	2	16	STR	10580	33
A109	2	16	STR	10220	32	A1109	2	16	STR	10220	32
A110	2	16	STR	9860	31	A1110	2	16	STR	9860	31
A111	2	16	STR	9500	29	A1111	2	16	STR	9500	29
A112	2	16	STR	9140	28	A1112	2	16	STR	9140	28
A113	2	16	STR	8780	27	A1113	2	16	STR	8780	27
A114	2	16	STR	8400	26	A1114	2	16	STR	8400	26
A115	2	16	STR	8040	25	A1115	2	16	STR	8040	25
A116	2	16	STR	7680	24	A1116	2	16	STR	7680	24
A117	2	16	STR	7320	23	A1117	2	16	STR	7320	23
A118	2	16	STR	6960	22	A1118	2	16	STR	6960	22
A119	2	16	STR	6600	20	A1119	2	16	STR	6600	20
A120	2	16	STR	6240	19	A1120	2	16	STR	6240	19
A121	2	16	STR	5860	18	A1121	2	16	STR	5860	18
A122	2	16	STR	5500	17	A1122	2	16	STR	5500	17
A123	2	16	STR	5140	16	A1123	2	16	STR	5140	16
A124	2	16	STR	4780	15	A1124	2	16	STR	4780	15
A125	2	16	STR	4420	14	A1125	2	16	STR	4420	14
A126	2	16	STR	4060	13	A1126	2	16	STR	4060	13
A127	2	16	STR	3680	11	A1127	2	16	STR	3680	11
A128	2	16	STR	3320	10	A1128	2	16	STR	3320	10
A129	2	16	STR	2960	9	A1129	2	16	STR	2960	9
A130	2	16	STR	2600	8	A1130	2	16	STR	2600	8
A131	2	16	STR	2220	7	A1131	2	16	STR	2220	7
A132	2	16	STR	1880	6	A1132	2	16	STR	1880	6
A133	2	16	STR	1500	5	A1133	2	16	STR	1500	5
A134	2	16	STR	1140	4	A1134	2	16	STR	1140	4
A135	2	16	STR	780	2	A1135	2	16	STR	780	2
B101	144	16	STR	12480	2789	B1001	145	13	STR	7720	1113
						G1001	2	16	STR	14260	44
						K1001	12	16	1	3080	57
						K1002	18	16	2	4220	118
						S1001	64	13	3	1220	77
TOTAL NON-EPOXY REINFORCING STEEL Kg. 7354					TOTAL EPOXY REINFORCING STEEL Kg. 5974						

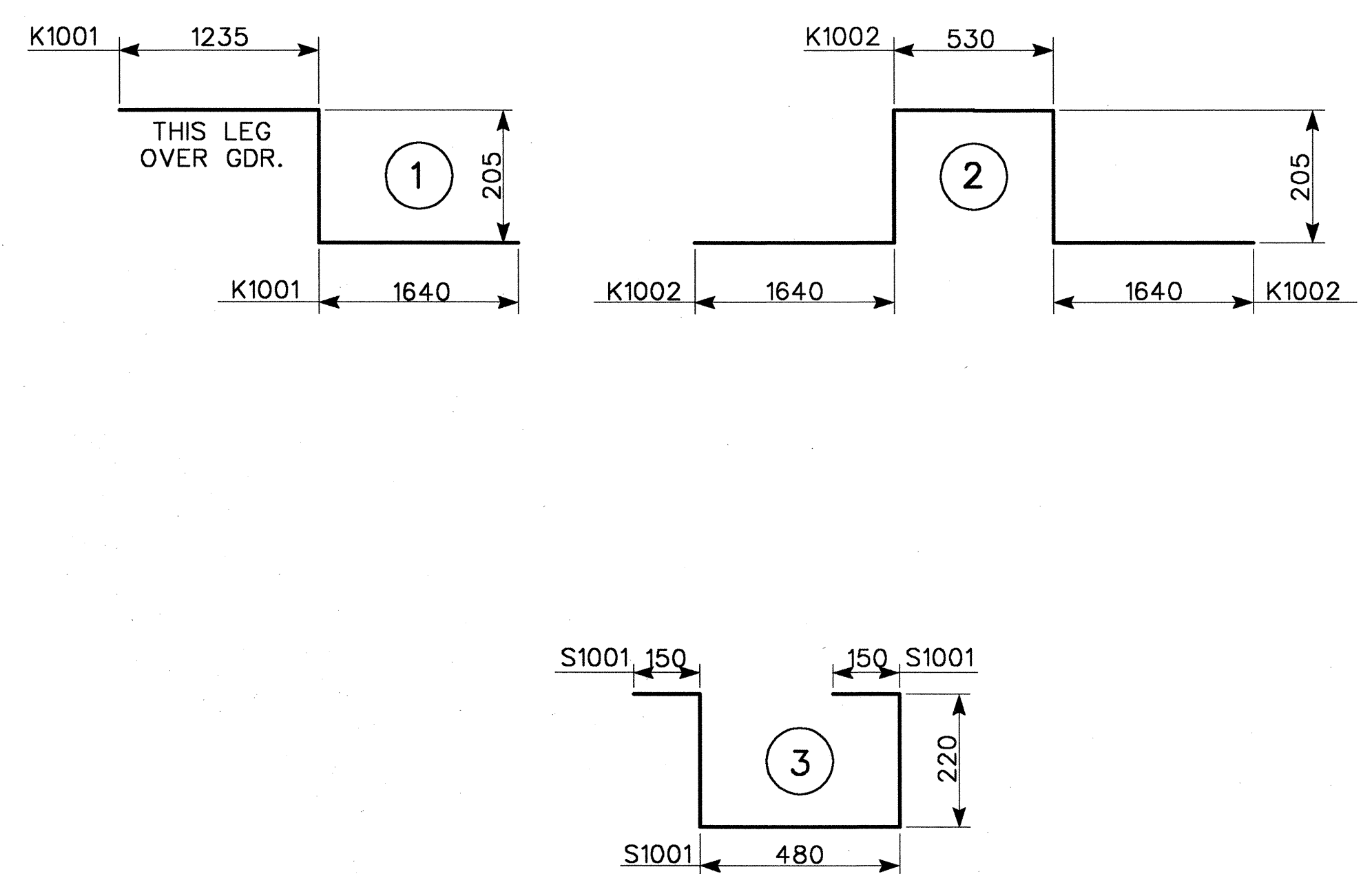
SUPERSTRUCTURE REINFORCING STEEL LENGTHS ARE BASED ON THE FOLLOWING MINIMUM SPLICE LENGTHS

BAR SIZE	SUPERSTRUCTURE EXCEPT APPROACH SLABS, PARAPET AND BARRIER RAIL		APPROACH SLABS		PARAPET AND BARRIER RAIL
	EPOXY COATED	UNCOATED	EPOXY COATED	UNCOATED	
*13	610	540	610	540	840
*16	770	660	770	660	1050
*19	920	790	1190	790	1330
*22	1580	1060			
*25	2080	1390			

GROOVING BRIDGE FLOORS

	SQ. METERS
SUPERSTRUCTURE	404.1
APPROACH SLABS	166.1
TOTAL	570.2

— BAR TYPES —

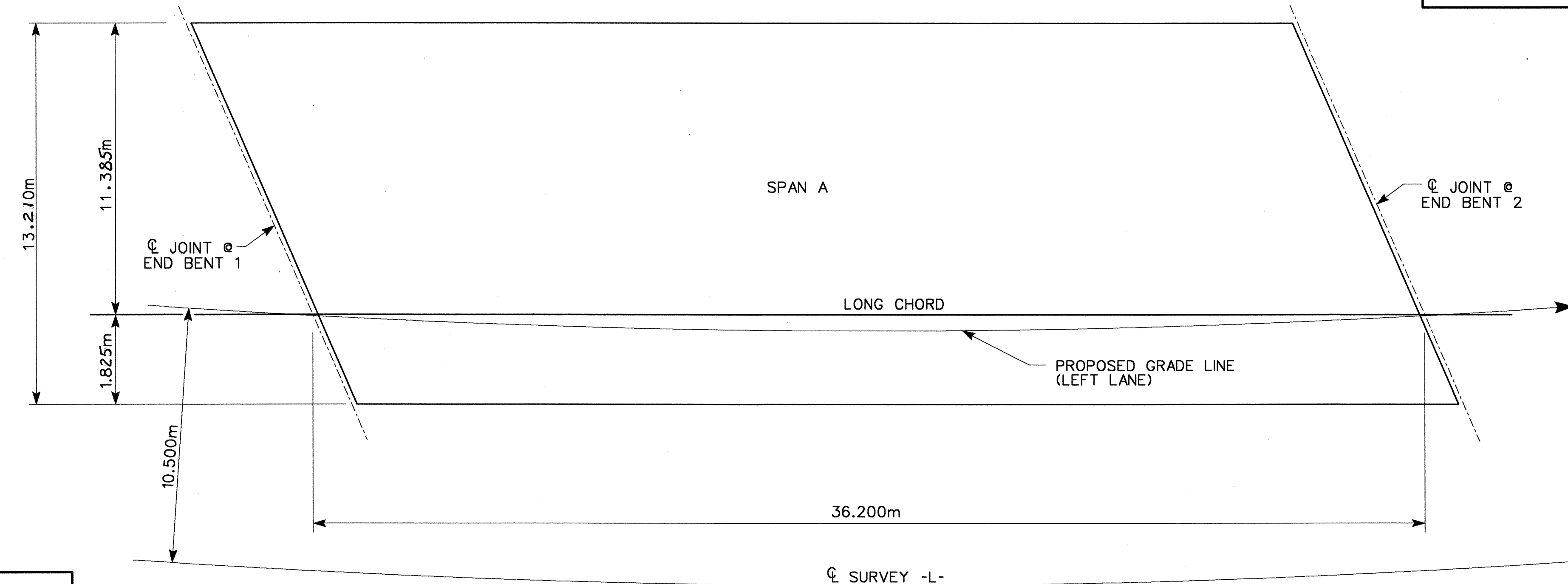


ALL BAR DIMENSIONS ARE OUT TO OUT

— SUPERSTRUCTURE BILL OF MATERIAL —

	CLASS AA CONCRETE (CU. METERS)	REINFORCING STEEL (Kg.)	EPOXY COATED REINFORCING STEEL (Kg.)
SPAN A	116.7	7354	5974
TOTALS **	116.7	7354	5974

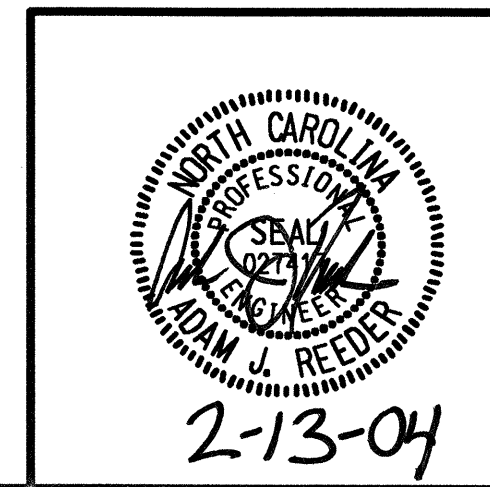
** QUANTITIES FOR BARRIER RAIL ARE NOT INCLUDED



LAYOUT FOR COMPUTING AREA OF REINFORCED CONCRETE DECK SLAB (478.2 SQ. METERS)

PROJECT NO. R-2552B
JOHNSTON COUNTY
STATION: 78+35.547 -L-
12+97.374 -Y10-

STATE OF NORTH CAROLINA
DEPARTMENT OF TRANSPORTATION
RALEIGH
SUPERSTRUCTURE BILL OF MATERIAL
(LEFT LANE)



REVISIONS					SHEET NO.
NO.	BY:	DATE:	NO.	BY:	DATE:
1			3		
2			4		

TOTAL SHEETS 431

PBS&J
1616 E. MILLBROOK RD., SUITE 310
RALEIGH, NORTH CAROLINA 27609
PHONE (919) 876-6888
FAX (919) 876-6848

DRAWN BY : AR DATE : 8/03
CHECKED BY : JL DATE : 9/03