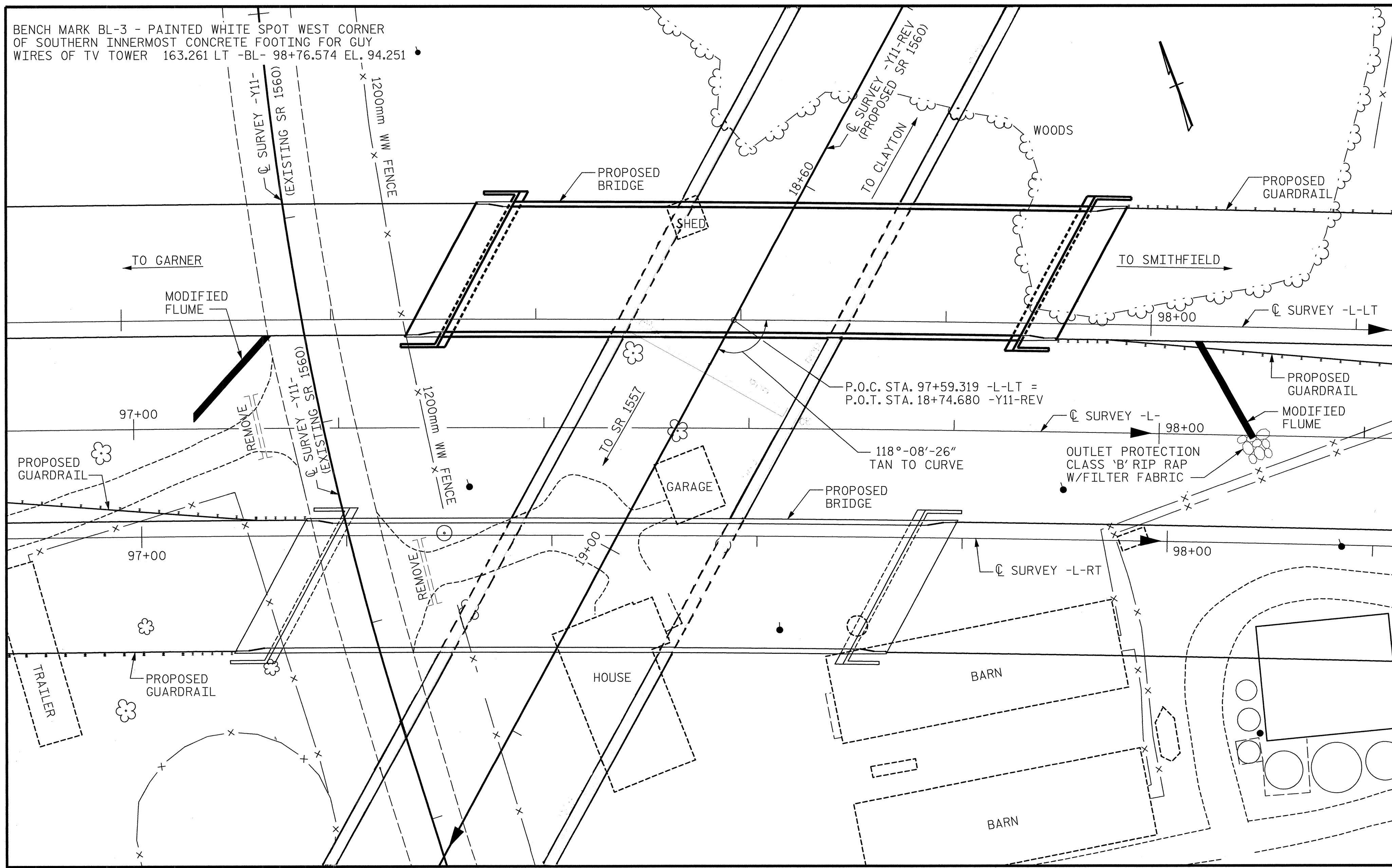


BENCH MARK BL-3 - PAINTED WHITE SPOT WEST CORNER OF SOUTHERN INNERMOST CONCRETE FOOTING FOR GUY WIRES OF TV TOWER 163.261 LT -BL- 98+76.574 EL. 94.251



LOCATION SKETCH

NOTES

- ALL DIMENSIONS ARE IN MILLIMETERS UNLESS OTHERWISE NOTED.
- ALL ELEVATIONS ARE IN METERS.
- ASSUMED LIVE LOAD = MS18 OR ALTERNATE LOADING.
- FOR OTHER DESIGN DATA AND GENERAL NOTES, SEE SHEET SNSM.
- FOR EROSION CONTROL MEASURES SEE EROSION CONTROL PLANS.
- THIS BRIDGE HAS BEEN DESIGNED BY THE STRENGTH DESIGN METHOD AS SPECIFIED IN AASHTO STANDARD SPECIFICATIONS.
- WORK SHALL NOT BE STARTED ON THIS BRIDGE UNTIL ROADWAY SECTION HAS BEEN EXCAVATED.
- THIS BRIDGE HAS BEEN DESIGNED IN ACCORDANCE WITH THE REQUIREMENTS OF THE STANDARD SPECIFICATIONS FOR SEISMIC DESIGN OF HIGHWAY BRIDGES FOR SEISMIC PERFORMANCE CATEGORY A.
- NO KNOWN UTILITY CONFLICTS.
- NEEDLE BEAMS WILL NOT BE ALLOWED UNLESS OTHERWISE CALLED FOR ON THE PLANS OR APPROVED BY THE ENGINEER.
- FOR SUBMITTAL OF WORKING DRAWINGS, SEE SPECIAL PROVISIONS.
- FOR METRIC STRUCTURAL STEEL, SEE SPECIAL PROVISIONS.
- FOR FALSEWORK AND FORMWORK, SEE SPECIAL PROVISIONS.
- PILES FOR END BENT NO.1 AND 2 SHALL BE DRIVEN TO A MINIMUM BEARING CAPACITY OF 530KN EACH.
- PILES FOR BENTS 1 & 2 SHALL BE DRIVEN TO A MINIMUM BEARING CAPACITY OF 530KN EACH.
- WAITING PERIOD FOR APPROACH SLAB CONSTRUCTION SHALL BE WAIVED.
- FOR CRANE SAFETY, SEE SPECIAL PROVISIONS.
- THE CONTRACTOR MAY CHOOSE TO UTILIZE THE STANDARD OVERHANG FALSEWORK BRACING SYSTEM, SEE "STANDARD OVERHANG FALSEWORK" SHEETS.

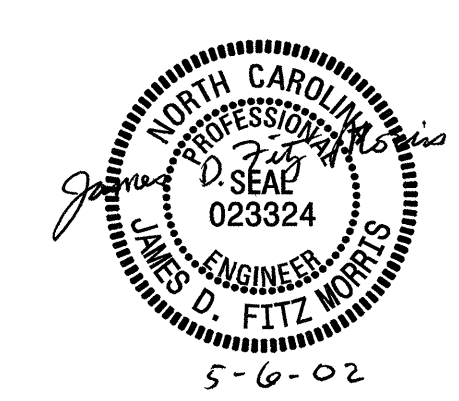
TOTAL BILL OF MATERIAL

	FOUNDATION EXCAVATION	REINFORCED CONCRETE DECK SLAB	GROOVING BRIDGE FLOORS	CLASS A CONCRETE	BRIDGE APPROACH SLABS	REINFORCING STEEL	SPIRAL COLUMN REINFORCING STEEL	1372mm PRESTRESSED CONCRETE GIRDERS		HP 310 X 79 STEEL PILES	CONCRETE BARRIER RAIL	100mm SLOPE PROTECTION	ELASTOMERIC BEARINGS	EVAZOTE JOINT SEALS	
	LUMP SUM	SQ. METERS	SQ. METERS	CU. METERS	LUMP SUM	KG	KG	NO.	METERS	NO.	METERS	METERS	SQ. METERS	LUMP SUM	LUMP SUM
SUPERSTRUCTURE		726.4	785.2		LUMP SUM			12	220.804			112.318		LUMP SUM	LUMP SUM
END BENT 1				30.2		2759				8	136.0		231		
BENT 1	LUMP SUM			54.1		4775	706			15	180.0				
BENT 2	LUMP SUM			54.0		4778	706			15	195.0				
END BENT 2				30.0		2743				8	136.0		230		
TOTAL	LUMP SUM	726.4	785.2	168.3	LUMP SUM	15055	1412	12	220.804	46	647.0	112.318	461	LUMP SUM	LUMP SUM

PROJECT NO. R-2552B  
JOHNSTON COUNTY  
 STATION: 97+59.319-L-LT POC  
18+74.680-Y11-REV POT



SHEET 4 OF 4



STATE OF NORTH CAROLINA  
 DEPARTMENT OF TRANSPORTATION  
 RALEIGH  
**GENERAL DRAWING**  
**BRIDGE ON US70 -L-LT**  
**CLAYTON BYPASS OVER**  
**SR 1560 BETWEEN GARNER**  
**AND SMITHFIELD**

**CTE ENGINEERS**  
 CONSOER TOWNSEND ENVIRONMENTAL ENGINEERS, INC.  
 13325 SOUTH POINT BOULEVARD, SUITE 400  
 CHARLOTTE, NORTH CAROLINA 28213-5820  
 (704) 583-0902

REVISIONS					SHEET NO.
NO.	BY:	DATE:	NO.	BY:	DATE:
1			3		
2			4		

TOTAL SHEETS: 5-23  
 431

DRAWN BY : MSB  
 CHECKED BY : JDF  
 DATE : 05/01/02  
 DATE : 05/01/02