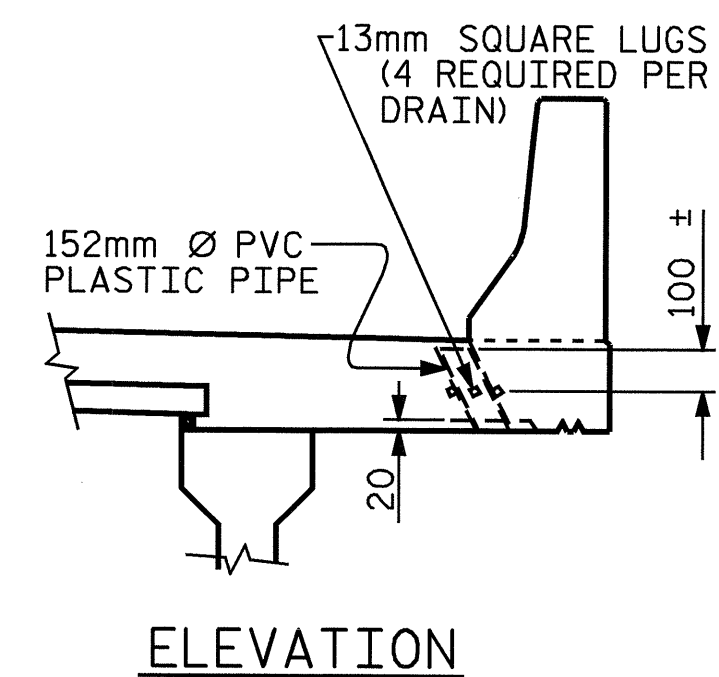
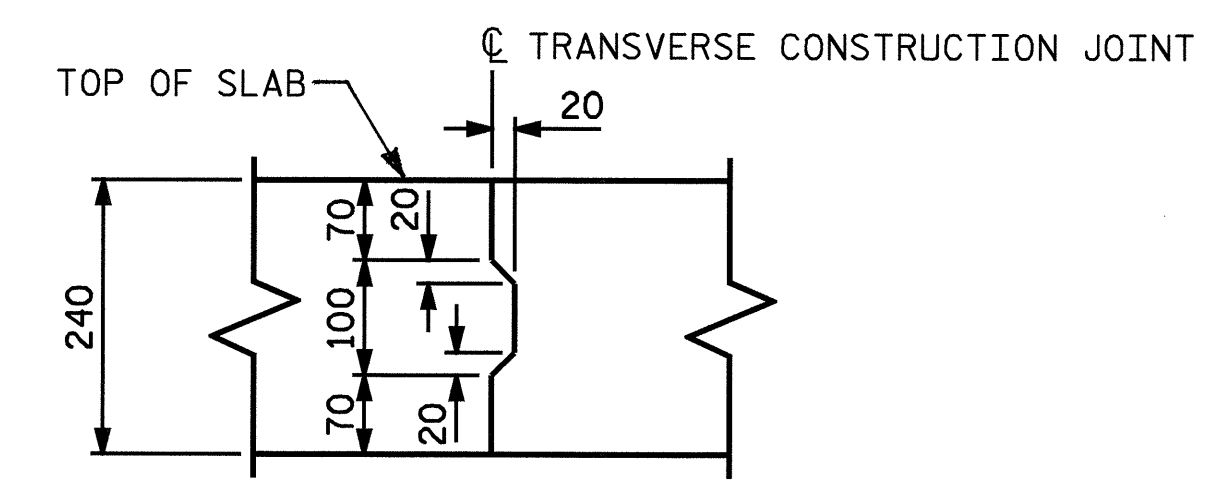
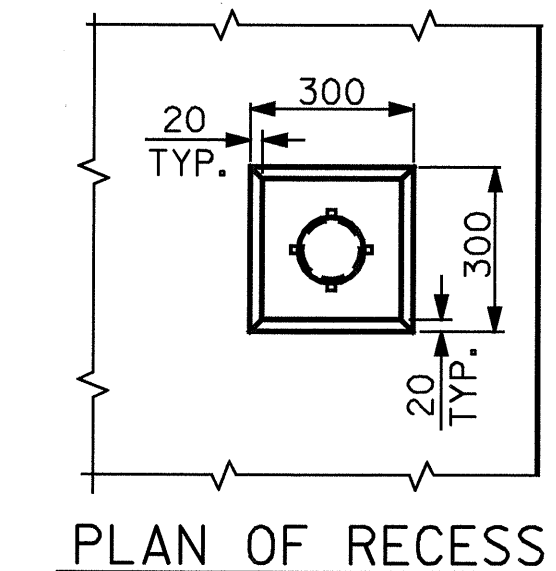
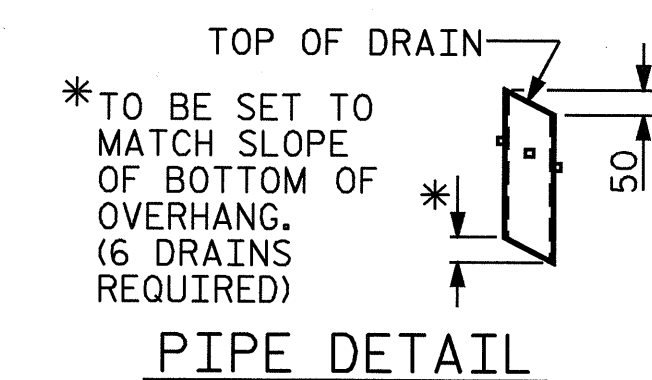
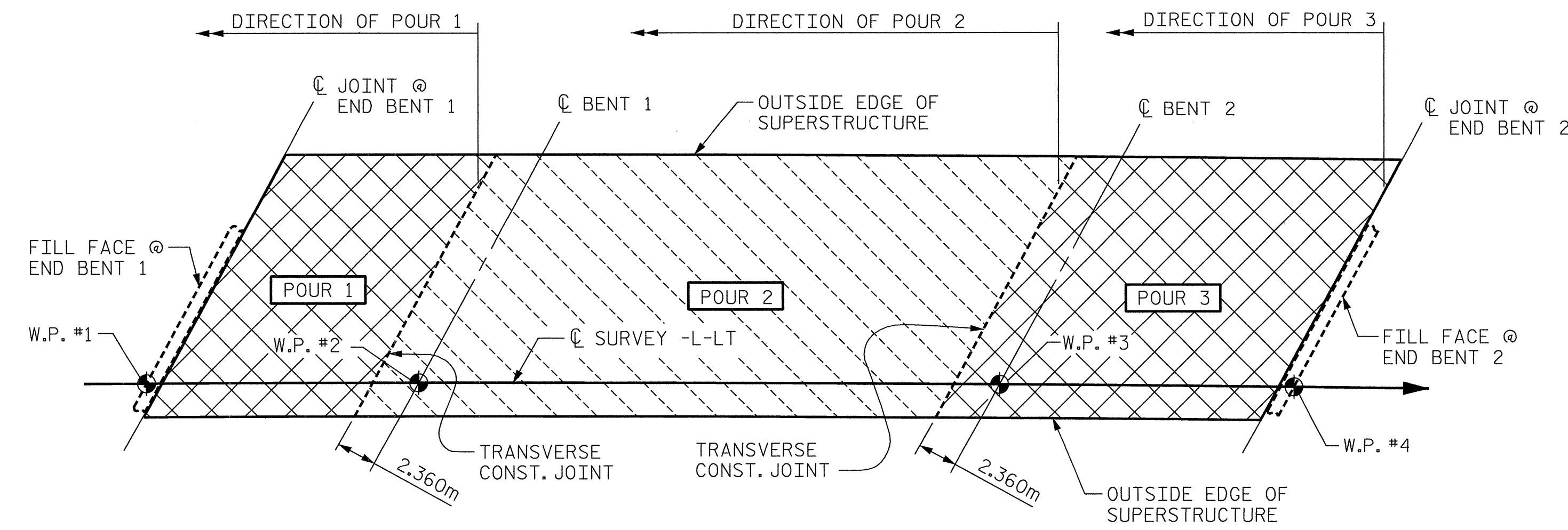


PLAN OF SPANS
 (SEE SUPERSTRUCTURE TYPICAL SECTION FOR ADDITIONAL DETAILS)



NOTES:
 TOP OF FLOOR DRAIN TO BE SET 10mm BELOW SURFACE OF SLAB.
 4- 13mm SQUARE LUGS TO BE GLUED TO THE PVC PLASTIC PIPE AT EQUAL SPACES AROUND THE PIPE DRAIN APPROXIMATELY 100mm FROM THE TOP OF THE PIPE.
 THE 152mm Ø PVC PIPE AND FITTINGS SHALL BE SCHEDULE 40 AND CONFORM TO ASTM D1785.

TRANSVERSE CONSTRUCTION JOINT DETAIL
 NOTE: SLAB REINFORCING STEEL SHALL BE CONTINUOUS THROUGH JOINT



POURING SEQUENCE

PROJECT NO. **R-2552B**
JOHNSTON COUNTY
 STATION: **97+59.319-L-LT POC**



SHEET 2 OF 2

CTE ENGINEERS
 CONSOER TOWNSEND ENVIRONMENTAL ENGINEERS, INC.
 1325 SOUTH POINT BOULEVARD, SUITE 400
 CHARLOTTE, NORTH CAROLINA 28213-5820
 (704) 583-9302

STATE OF NORTH CAROLINA
 DEPARTMENT OF TRANSPORTATION
 RALEIGH

SUPERSTRUCTURE

PLAN OF 'B' BAR LAYOUT

REVISIONS		SHEET NO.	
NO.	BY:	DATE:	NO.
1			5-67
2			43