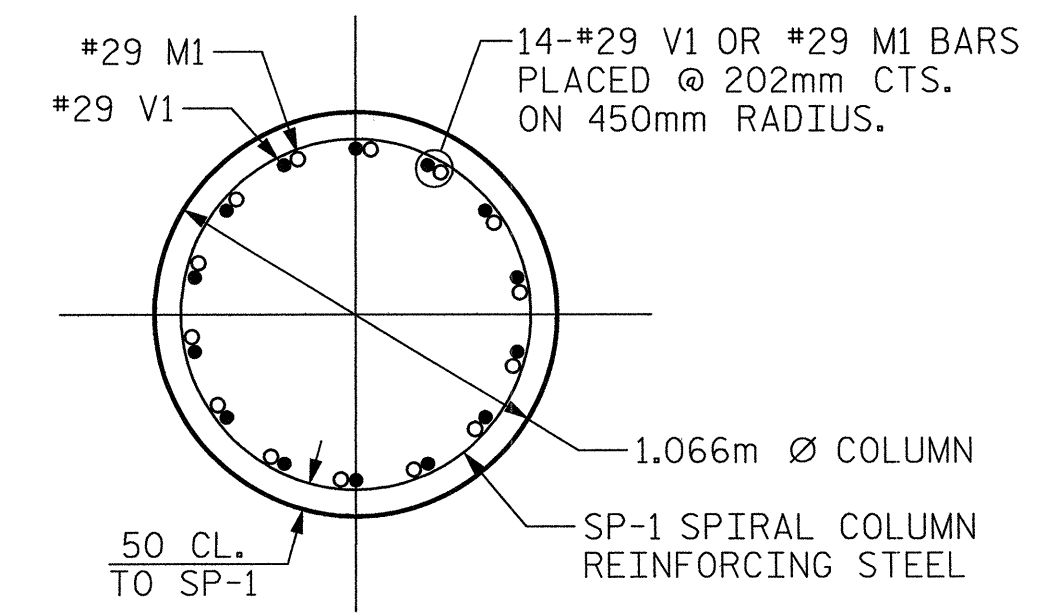
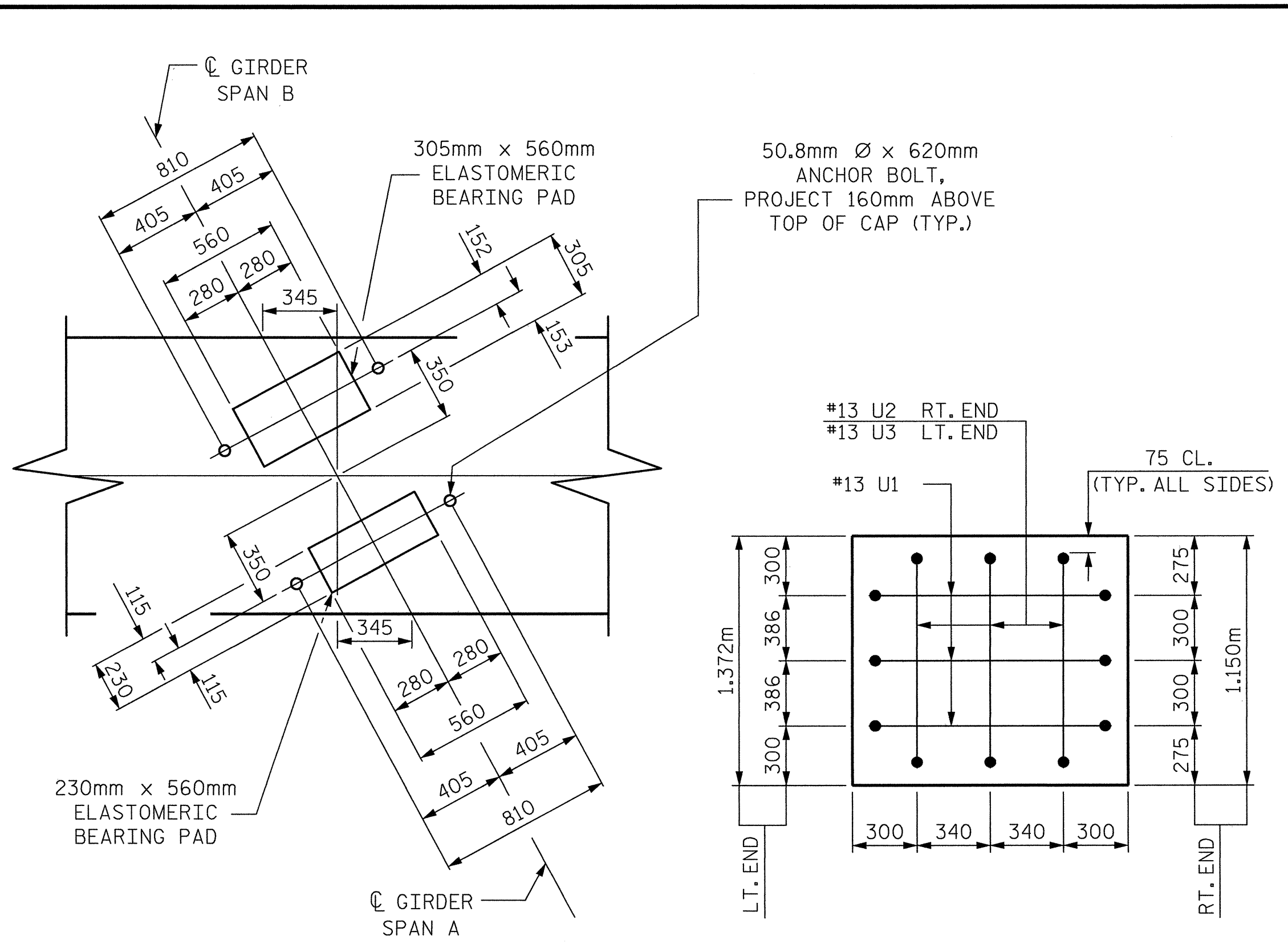


SECTION A-A

SECTION B-B

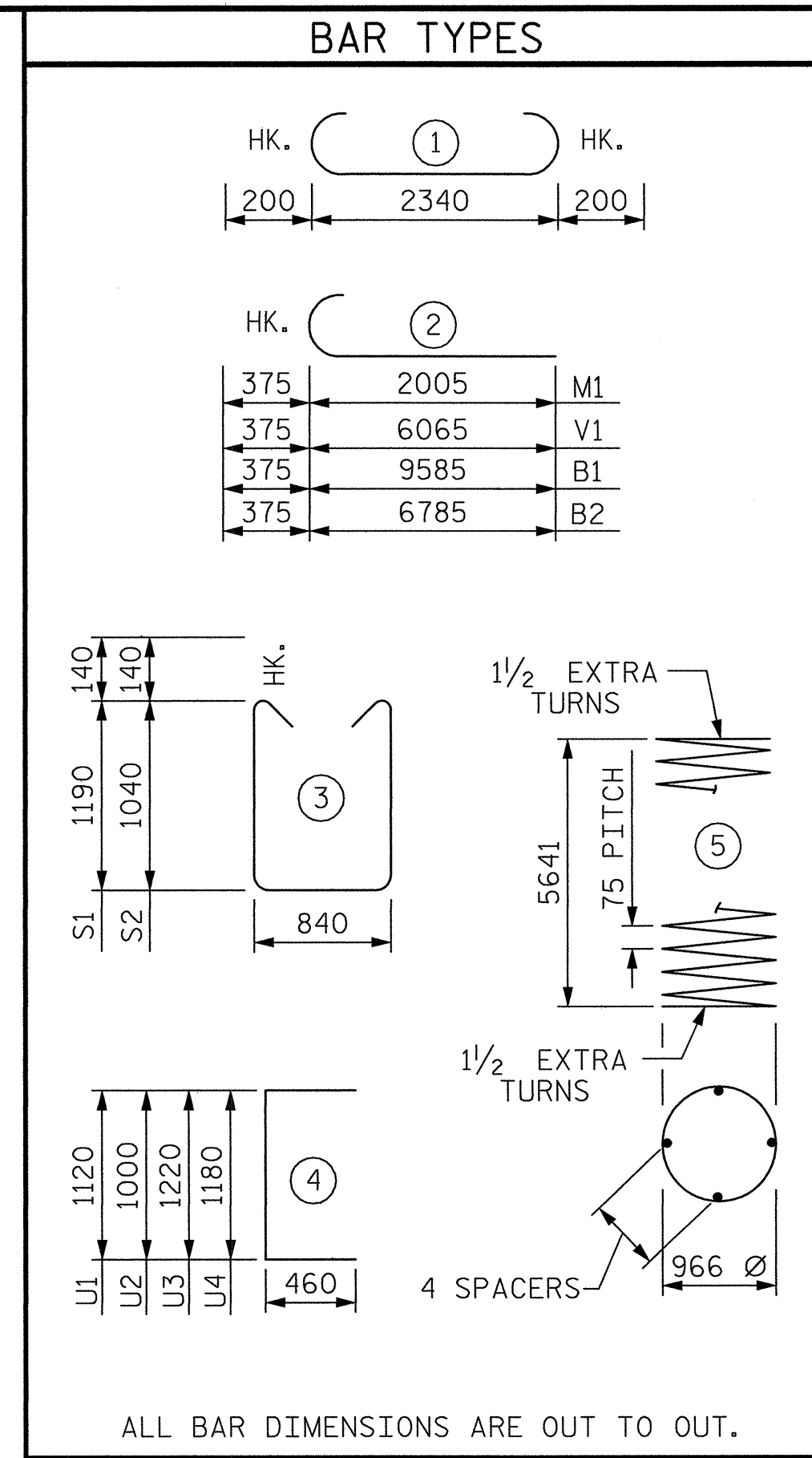


SECTION C-C



DETAIL "A"

DETAIL "B"

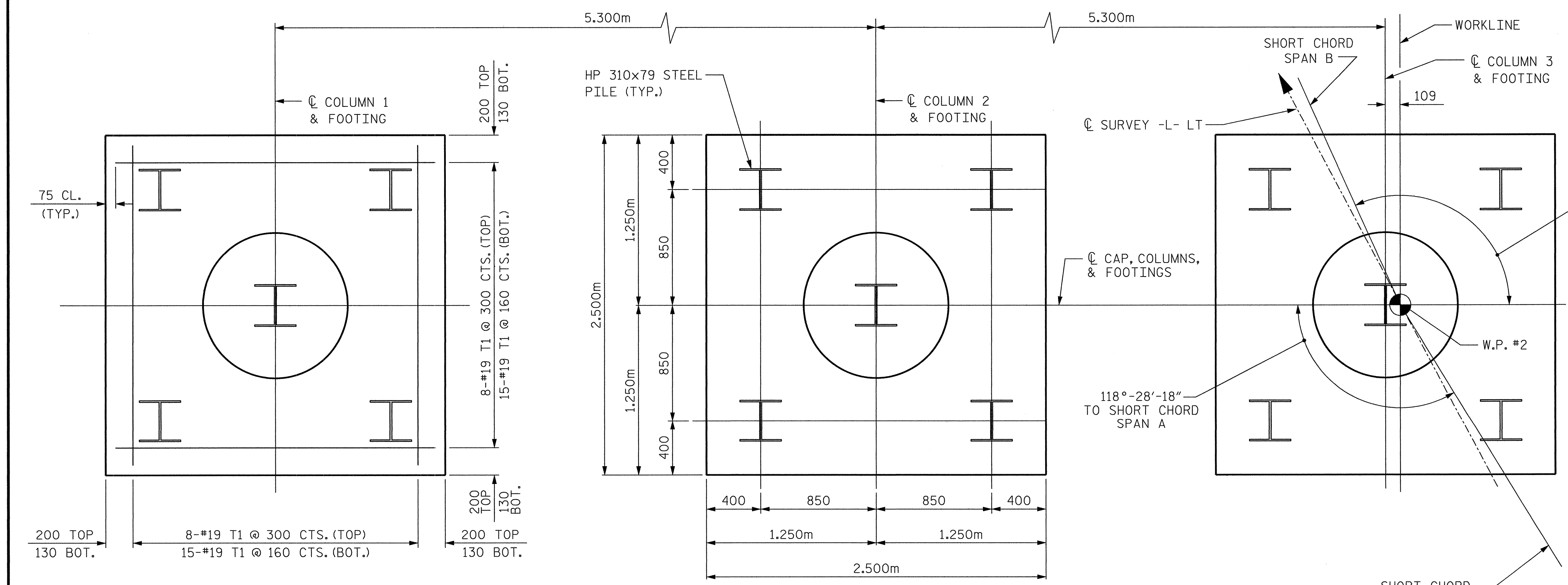


ALL BAR DIMENSIONS ARE OUT TO OUT.

BILL OF MATERIAL					
BENT #1					
BAR	NO.	SIZE	TYPE	LENGTH	WEIGHT
B1	8	29	2	9960	403
B2	8	29	2	7160	290
B3	12	29	STR.	13700	832
B4	2	16	STR.	4860	15
B5	3	13	STR.	1180	4
M1	42	29	2	2380	506
S1	40	16	3	3500	217
S2	40	16	3	3200	199
T1	138	19	1	2740	845
U1	6	13	4	2040	12
U2	3	13	4	1920	6
U3	3	13	4	2140	6
U4	34	13	4	2100	71
V1	42	29	2	6440	1369
SP-1	3	*	5	236,600	706
REINFORCING STEEL				KG.	4775
SPIRAL COLUMN REINFORCING STEEL				KG.	706
CLASS A CONCRETE				CU. METERS	
POUR 1 FOOTINGS					16.9
POUR 2 COLUMNS					14.9
POUR 3 CAP					22.3
CLASS A CONCRETE				CU. METERS	54.1
HP310x79 STEEL PILES					
NO. 15				METERS	180

NOTES

PILES SHALL BE DRIVEN TO A BEARING CAPACITY OF 530 kN/PILE
 ** THE SP-1 SPIRAL REINFORCING STEEL SHALL BE W20 OR D-20 COLD DRAWN WIRE OR #13 PLAIN OR DEFORMED BAR.



FOOTING PLAN

FOOTING DIMENSIONS, REINFORCING STEEL, AND PILE SPACING ARE TYPICAL FOR ALL FOOTINGS

PROJECT NO. **R-2552B**
 COUNTY **JOHNSTON**
 STATION: **97+59.319-L-LT POC**

SHEET 2 OF 2

STATE OF NORTH CAROLINA
 DEPARTMENT OF TRANSPORTATION
 RALEIGH

SUBSTRUCTURE

BENT 1

REVISIONS

NO.	BY:	DATE:	NO.	BY:	DATE:
1			3		
2			4		

SHEET NO. **5-102**
 TOTAL SHEETS **431**

DRAWN BY : MHF DATE : 05/01/02
 CHECKED BY : JAW DATE : 05/01/02

