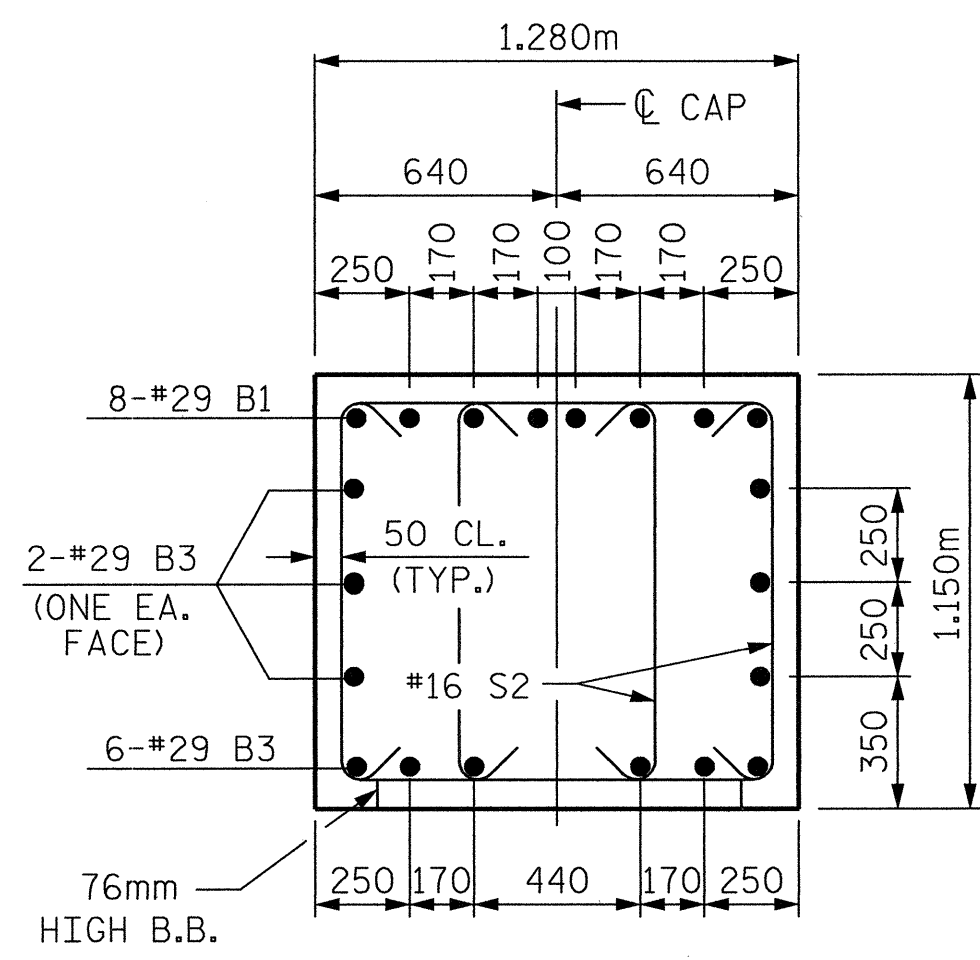
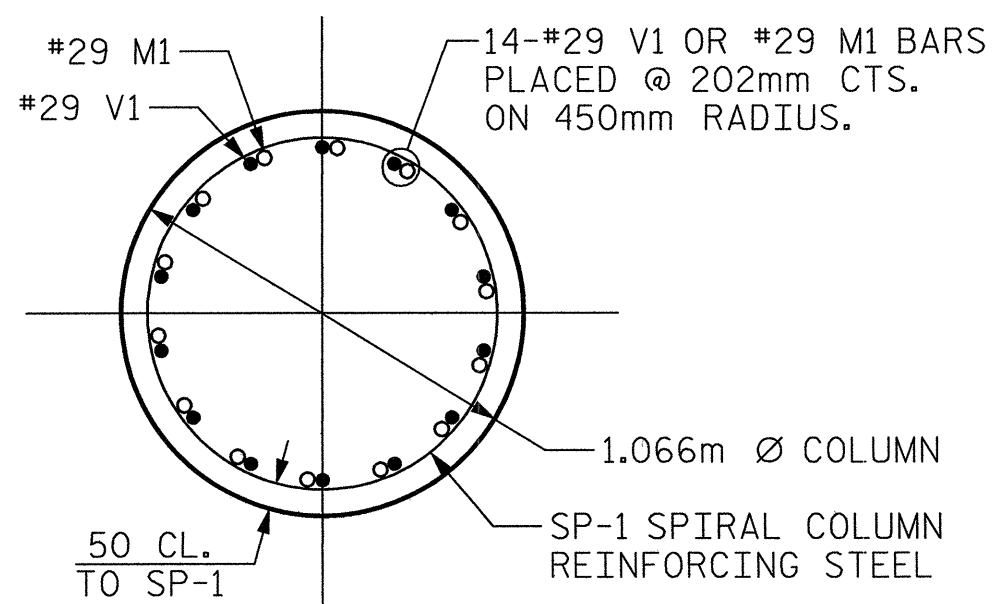


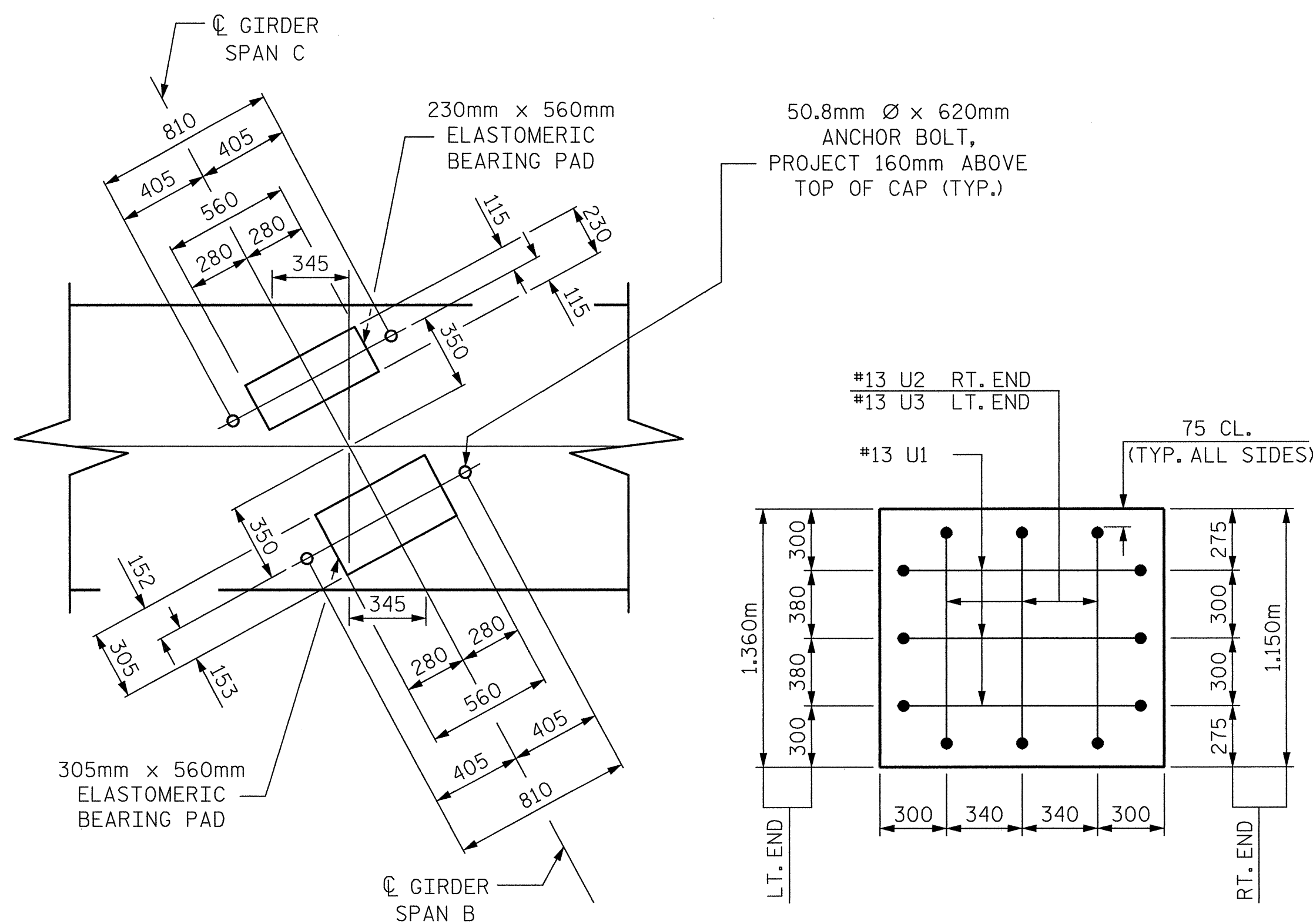
SECTION A-A



SECTION B-B



SECTION C-C



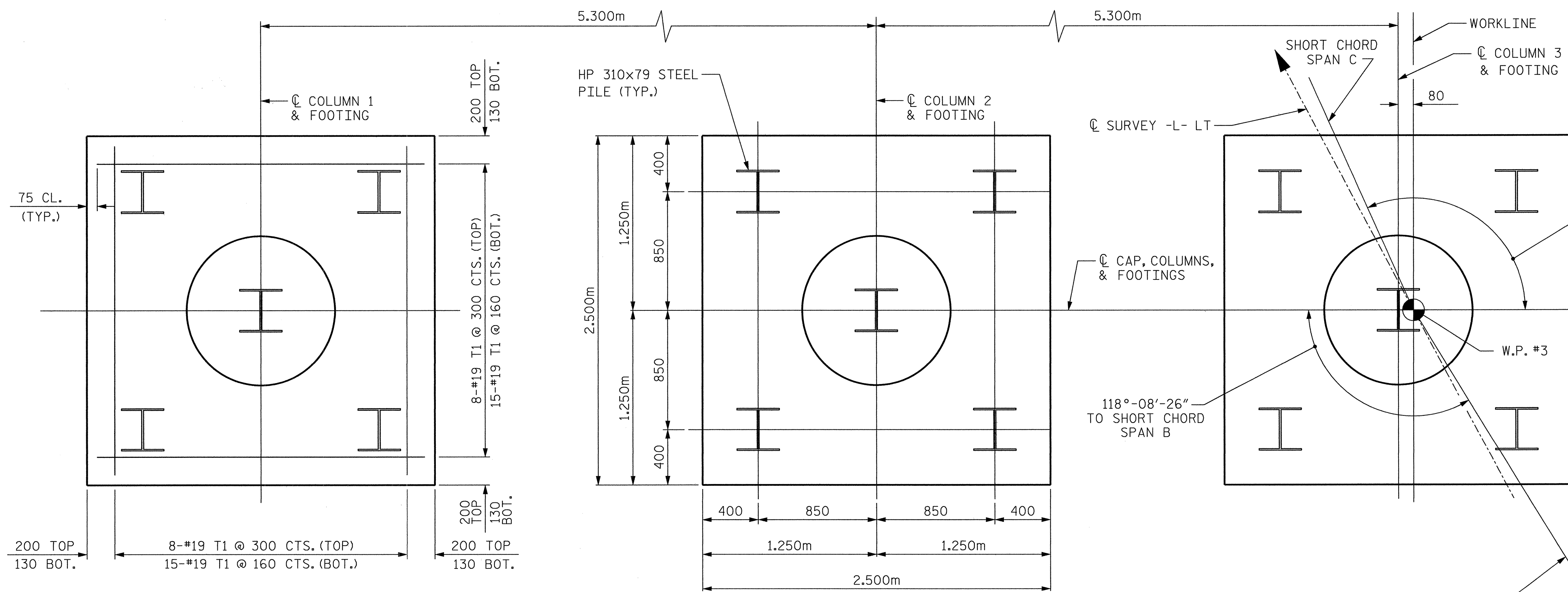
DETAIL "A"

DETAIL "B"

BAR TYPES		BILL OF MATERIAL				
		BENT #2				
BAR	NO.	SIZE	TYPE	LENGTH	WEIGHT	
B1	8	29	2	9960	403	
B2	8	29	2	7160	290	
B3	12	29	STR.	13700	832	
B4	2	16	STR.	4860	15	
B5	3	13	STR.	1180	4	
M1	42	29	2	2380	506	
S1	40	16	3	3480	216	
S2	40	16	3	3200	199	
T1	138	19	1	2740	845	
U1	6	13	4	2040	12	
U2	3	13	4	1920	6	
U3	3	13	4	2120	6	
U4	34	13	4	2100	71	
V1	42	29	2	6460	1373	
SP-1	3	*	5	236,600	706	
REINFORCING STEEL				KG.	4778	
SPIRAL COLUMN REINFORCING STEEL				KG.	706	
CLASS A CONCRETE				CU. METERS		
POUR 1 FOOTINGS					16.9	
POUR 2 COLUMNS					14.9	
POUR 3 CAP					22.2	
CLASS A CONCRETE				CU. METERS	54.0	
HP310x79 STEEL PILES						
NO. 15				METERS	195	

NOTES

PILES SHALL BE DRIVEN TO A BEARING CAPACITY OF 530 KN/PILE
 ** THE SP-1 SPIRAL REINFORCING STEEL SHALL BE W20 OR D-20 COLD DRAWN WIRE OR #13 PLAIN OR DEFORMED BAR.



FOOTING PLAN

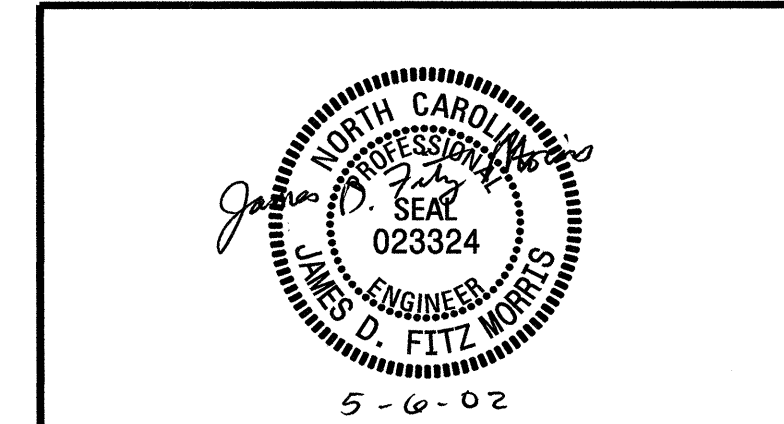
FOOTING DIMENSIONS, REINFORCING STEEL, AND PILE SPACING ARE TYPICAL FOR ALL FOOTINGS

ALL BAR DIMENSIONS ARE OUT TO OUT.

PROJECT NO. **R-2552B**
JOHNSTON COUNTY
 STATION: **97+59.319-L-LT POC**



SHEET 2 OF 2



CTE ENGINEERS
 CONSOER TOWNSEND ENVIRONMENTAL ENGINEERS, INC.
 1325 SOUTH POINT BOULEVARD, SUITE 400
 CHARLOTTE, NORTH CAROLINA 28273-5820
 (704) 583-0902

STATE OF NORTH CAROLINA
 DEPARTMENT OF TRANSPORTATION
 RALEIGH
SUBSTRUCTURE
BENT 2

REVISIONS				SHEET NO.
NO.	BY:	DATE:	NO.	DATE:
1			3	
2			4	

DRAWN BY : MHF
 CHECKED BY : JAW
 DATE : 05/01/02
 DATE : 05/01/02