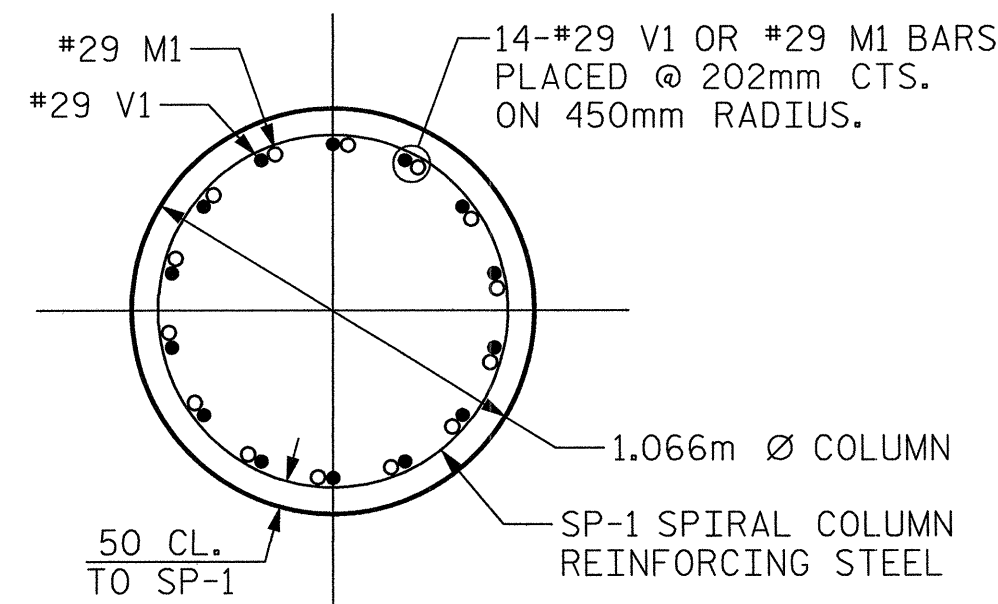
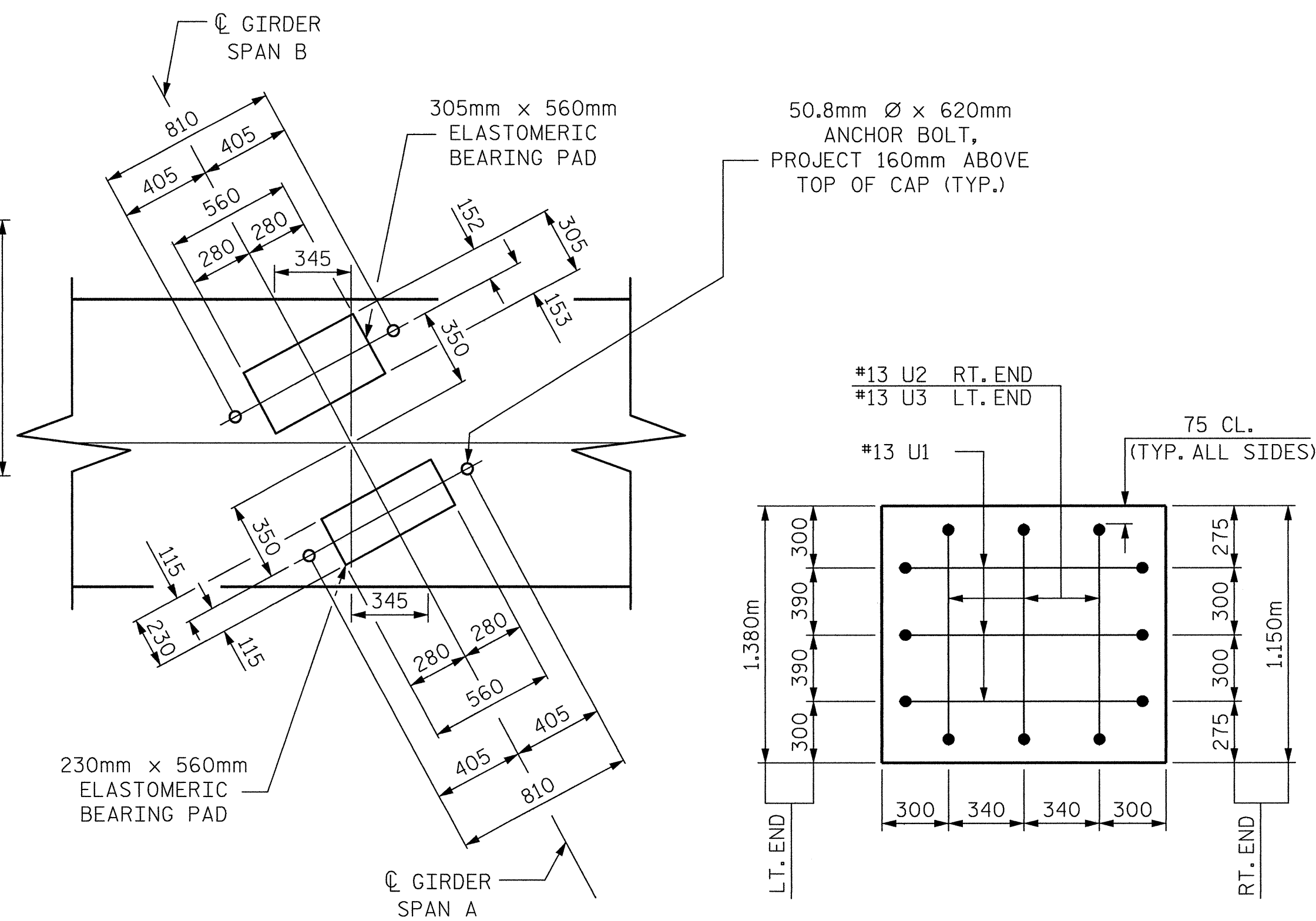


SECTION A-A

SECTION B-B

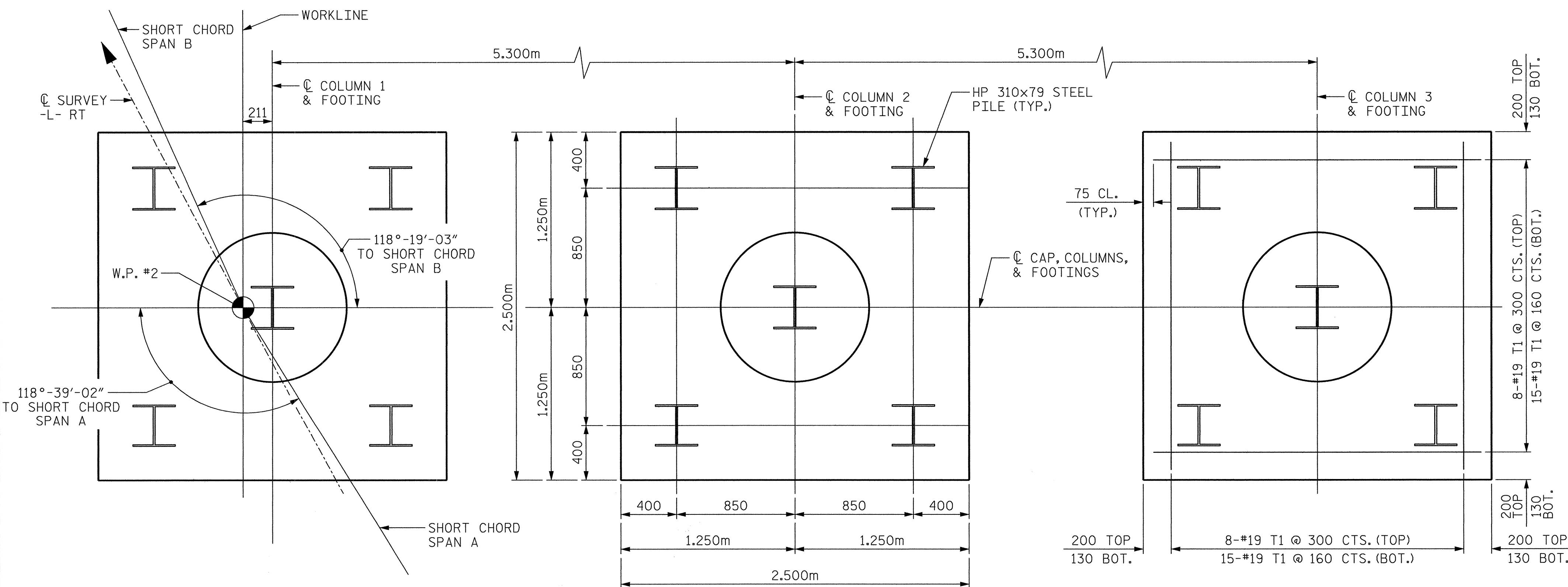


SECTION C-C



DETAIL "A"

DETAIL "B"



FOOTING PLAN

FOOTING DIMENSIONS, REINFORCING STEEL, AND PILE SPACING ARE TYPICAL FOR ALL FOOTINGS

BAR TYPES		BILL OF MATERIAL				
		BENT #1				
BAR	NO.	SIZE	TYPE	LENGTH	WEIGHT	
B1	8	29	2	9960	403	
B2	8	29	2	7160	290	
B3	12	29	STR.	13700	832	
B4	2	16	STR.	4860	15	
B5	3	13	STR.	1180	4	
M1	42	29	2	2380	506	
S1	40	16	3	3500	217	
S2	40	16	3	3200	199	
T1	138	19	1	2740	845	
U1	6	13	4	2040	12	
U2	3	13	4	1920	6	
U3	3	13	4	2140	6	
U4	34	13	4	2100	71	
V1	42	29	2	6220	1322	
SP-1	3	*	5	227,620	679	
REINFORCING STEEL				KG.	4728	
SPIRAL COLUMN REINFORCING STEEL				KG.	679	
CLASS A CONCRETE				CU. METERS		
POUR 1 FOOTINGS					16.9	
POUR 2 COLUMNS					14.3	
POUR 3 CAP					22.3	
CLASS A CONCRETE				CU. METERS	53.5	
HP310x79 STEEL PILES						
NO. 15				METERS	180	

ALL BAR DIMENSIONS ARE OUT TO OUT.

NOTES

- PILES SHALL BE DRIVEN TO A BEARING CAPACITY OF 530 KN/PILE
- * THE SP-1 SPIRAL REINFORCING STEEL SHALL BE W20 OR D-20 COLD DRAWN WIRE OR #13 PLAIN OR DEFORMED BAR.

PROJECT NO. **R-2552B**
JOHNSTON COUNTY
 STATION: **97+46.378-L-RT POC**



SHEET 2 OF 2

STATE OF NORTH CAROLINA
 DEPARTMENT OF TRANSPORTATION
 RALEIGH

SUBSTRUCTURE

BENT 1

5-6-02

CTE ENGINEERS
 CONSOER TOWNSEND ENVIRODYNE ENGINEERS, INC.
 1325 SOUTH POINT BOULEVARD, SUITE 400
 CHARLOTTE, NORTH CAROLINA 28273-5820
 (704) 583-9902

REVISIONS					SHEET NO.
NO.	BY:	DATE:	NO.	BY:	DATE:
1			3		
2			4		

TOTAL SHEETS: 431

DRAWN BY : MHF
 CHECKED BY : JAW
 DATE : 05/01/02
 DATE : 05/01/02