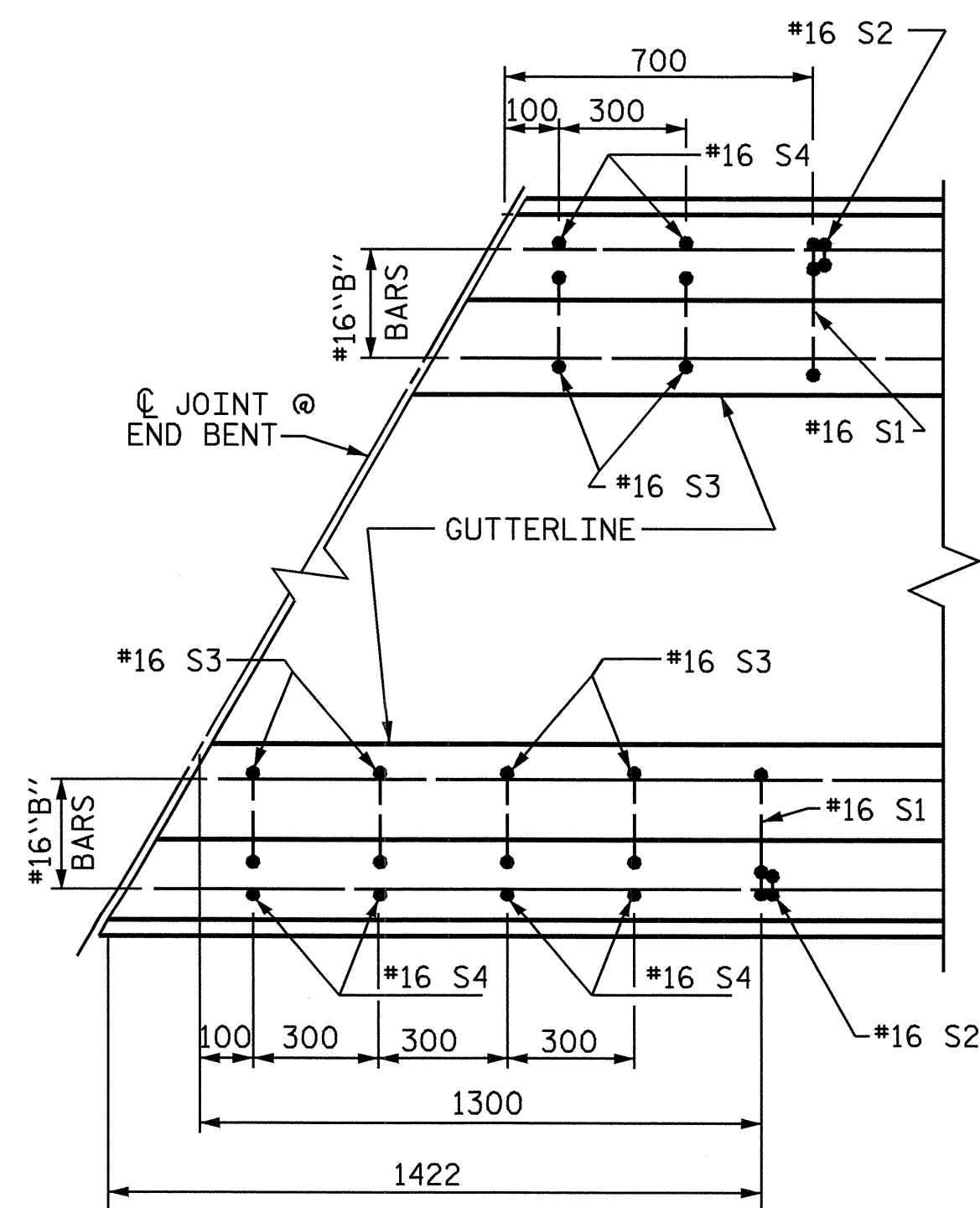
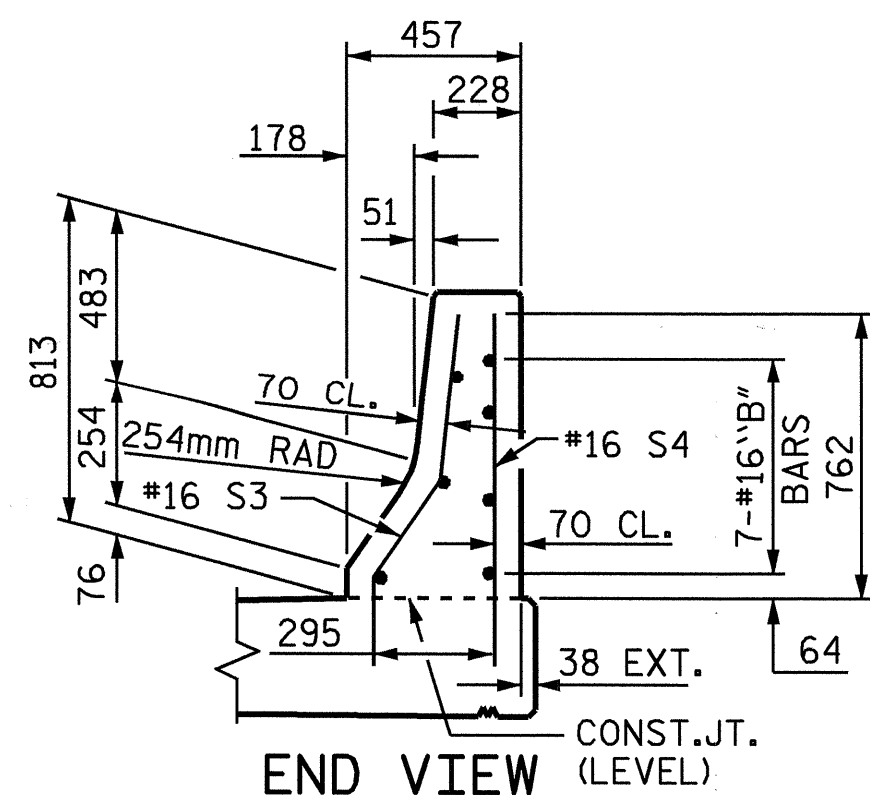


PLAN



PLAN



END VIEW

END OF RAIL DETAILS

FOR ADHESIVE ANCHORING AT SAWS JOINTS

NOTES

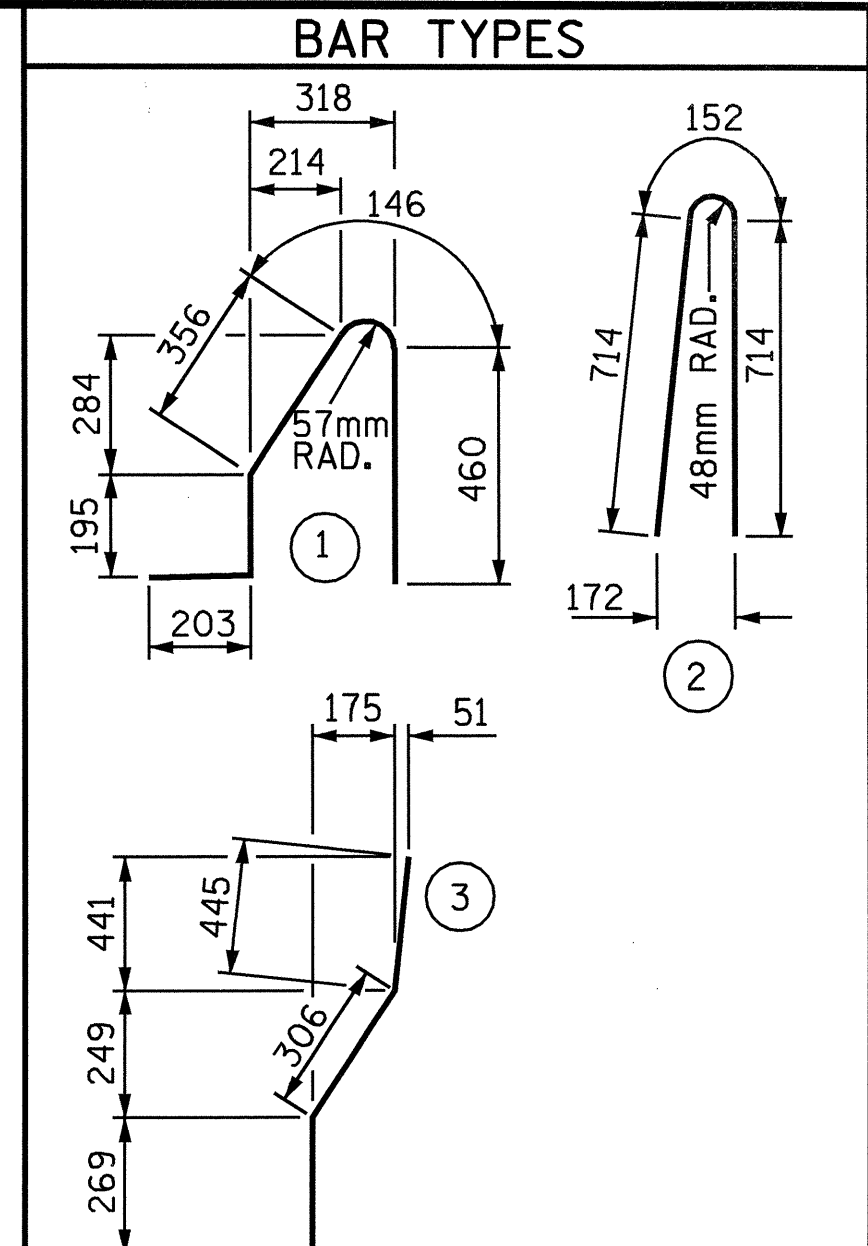
THE BARRIER RAIL IN EACH SPAN SHALL NOT BE CAST UNTIL ALL SLAB CONCRETE IN THAT SPAN HAS BEEN CAST AND HAS REACHED A MINIMUM COMPRESSIVE STRENGTH OF 20.7 MPa.

WHEN COMPRESSION JOINT SEAL OR EVAZOTE JOINT SEAL IS REQUIRED, THE JOINT IN THE DECK SHALL BE SAWS PRIOR TO THE CASTING OF BARRIER RAIL.

ALL REINFORCING STEEL IN BARRIER RAILS SHALL BE EPOXY COATED.

THE #16 S3 AND #16 S4 BARS SHALL BE INSTALLED, USING AN ADHESIVE ANCHORING SYSTEM, AFTER SAWSING THE JOINT. FOR ADHESIVELY ANCHORED ANCHOR BOLTS OR DOWELS, SEE SPECIAL PROVISIONS. THE YIELD LOAD FOR THE #16 S3 AND #16 S4 BARS IS 82.7 KN. FIELD TESTING FOR THE ADHESIVE BONDING SYSTEM IS NOT REQUIRED.

VERTICAL GROOVED CONTRACTION JOINTS, 12mm IN DEPTH, SHALL BE TOOLED IN ALL EXPOSED FACES OF THE BARRIER RAIL AND IN ACCORDANCE WITH ARTICLE 825-10(B) OF THE STANDARD SPECIFICATIONS. THE CONTRACTION JOINT SHALL BE LOCATED AT EACH THIRD POINT BETWEEN BARRIER RAIL EXPANSION JOINTS. ONLY ONE CONTRACTION JOINT IS REQUIRED AT MIDPOINT OF BARRIER RAIL SEGMENTS LESS THAN 6.1m IN LENGTH AND NO CONTRACTION JOINTS ARE REQUIRED FOR THOSE SEGMENTS LESS THAN 3.5m IN LENGTH.



ALL BAR DIMENSIONS ARE OUT TO OUT

BILL OF MATERIAL

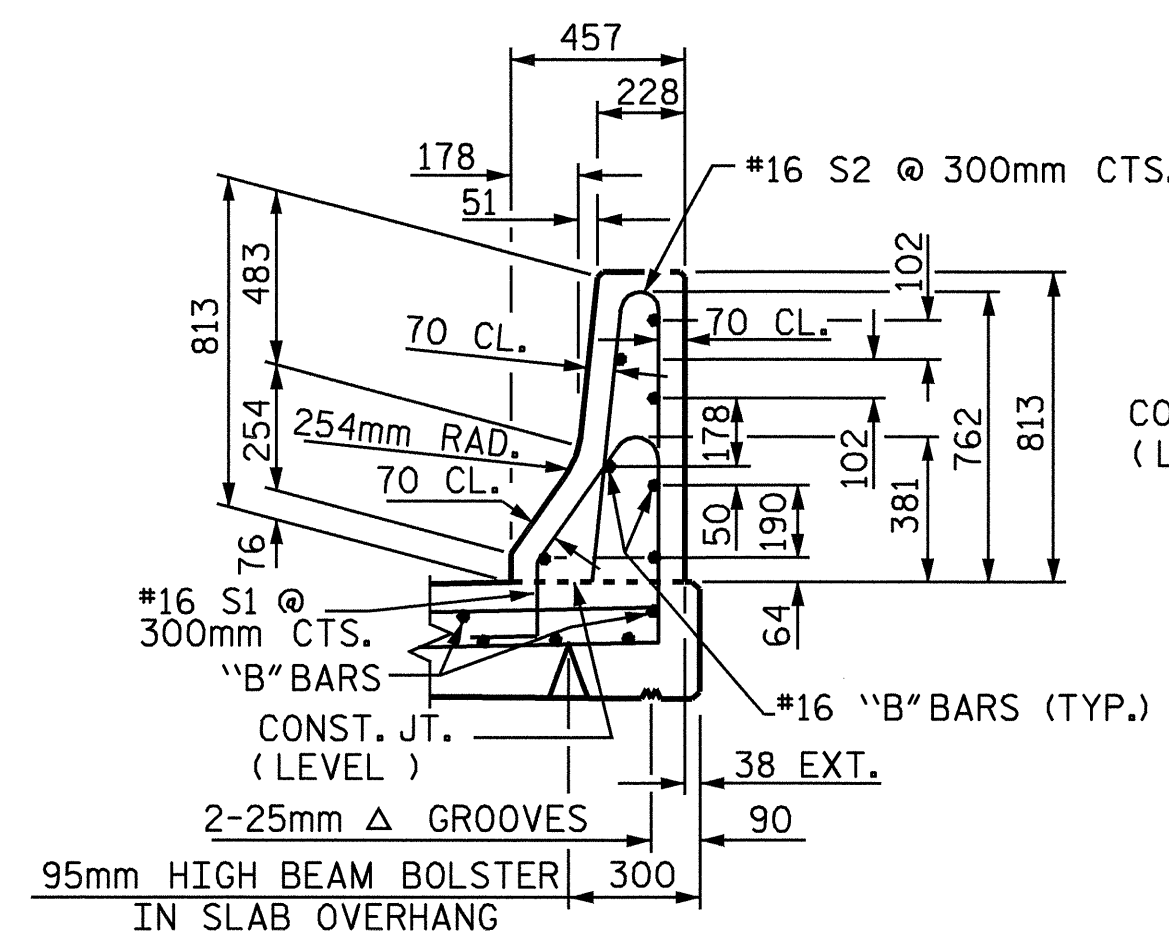
FOR CONCRETE BARRIER RAIL ONLY

BAR	NO.	SIZE	TYPE	LENGTH	WEIGHT
* S1	362	#16	1	1360	764
* S2	362	#16	2	1580	888
* S3	12	#16	3	1020	19
* S4	12	#16	STR	960	18
* B1	56	#16	STR	3520	306
* B2	98	#16	STR	6120	931

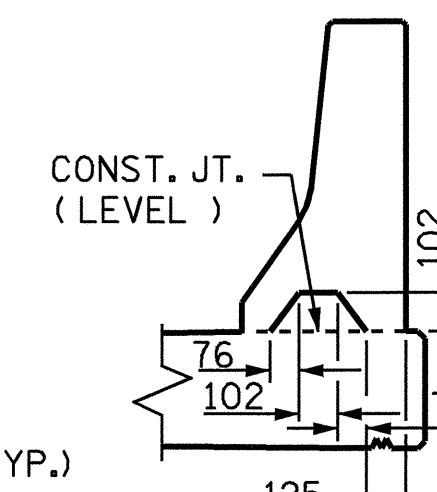
* EPOXY COATED REINFORCING STEEL 2926 kg

CLASS AA CONCRETE 28.0 CU. METER

CONCRETE BARRIER RAIL 111.656 METERS

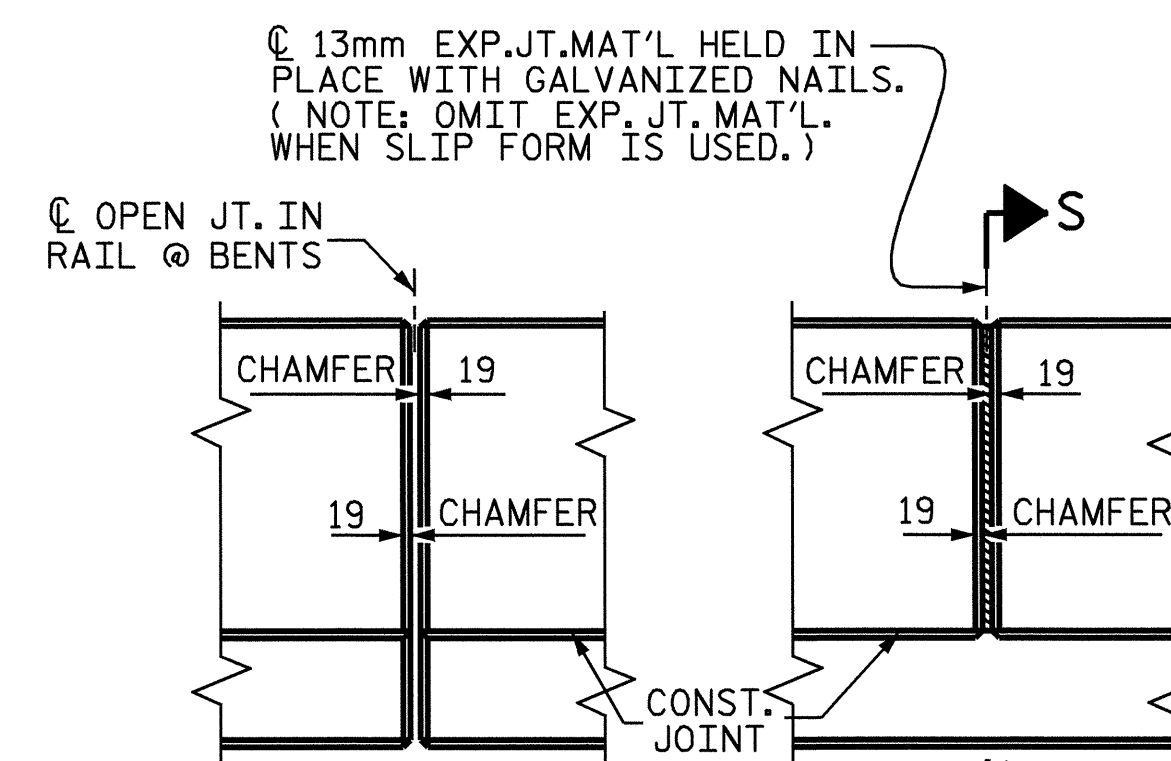


SECTION THRU RAIL



SECTION S-S

AT DAM IN OPEN JOINT (THIS IS TO BE USED ONLY WHEN SLIP FORM IS USED)



ELEVATION AT EXPANSION JOINTS BARRIER RAIL DETAILS

PROJECT NO. R-2552B
JOHNSTON COUNTY
STATION: 14+72.000-Y11-REV.

STATE OF NORTH CAROLINA
DEPARTMENT OF TRANSPORTATION
RALEIGH
STANDARD
CONCRETE BARRIER RAIL



ASSEMBLED BY :	R.D. MARTIN	DATE :	5/14/04
CHECKED BY :	H. A. LUCAS	DATE :	2/18/05
DRAWN BY :	ARB 5/87	REV. 8/16/99	RWW/LES
CHECKED BY :	SJD 9/87	REV. 10/17/00	RWW/LES
		REV. 5/7/03R	RWW/JTE

REVISIONS						SHEET NO.
NO.	BY:	DATE:	NO.	BY:	DATE:	TOTAL SHEETS
1			3			431
2			4			431