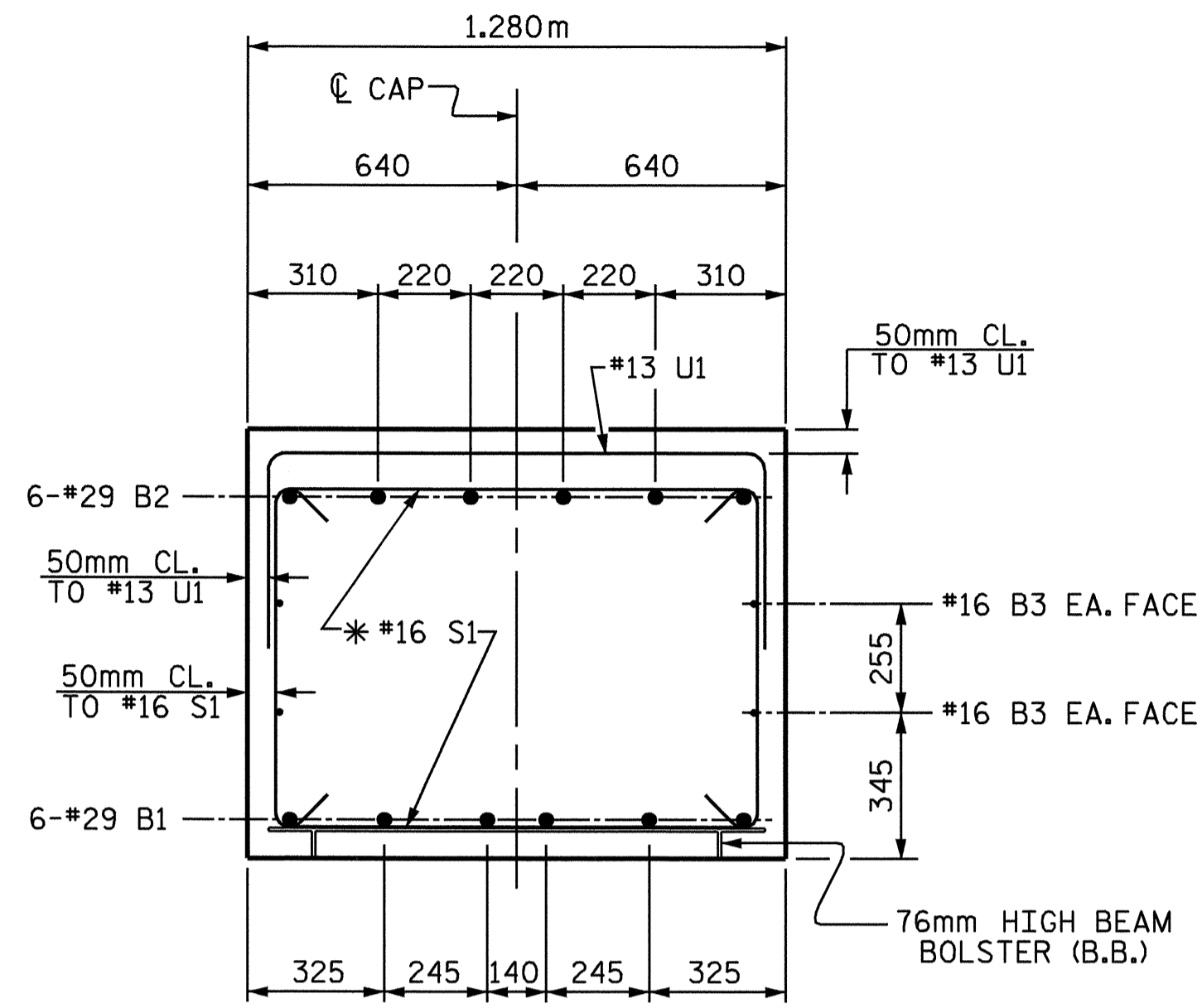


END OF CAP



* INVERT ALTERNATE STIRRUPS

SECTION A-A

BILL OF MATERIAL
BENT No. 2

BAR No.	SIZE	TYPE	LENGTH	WEIGHT
B1	6 #29	STR	9640	293
B2	6 #29	1	10360	315
B3	4 #16	STR	9640	60
M1	20 #29	STR	11300	1144
M2	20 #29	STR	9300	941
S1	43 #16	2	3120	208
U1	32 #13	3	2100	67
U2	6 #13	3	2060	12
U3	6 #13	3	1700	10
V1	40 #29	4	2780	563
REINFORCING STEEL				3613 kg

BAR No.	SIZE	TYPE	LENGTH	WEIGHT
SP1	2 **	5	83,900	167
SP2	1 ***	6	217,720	338
SP3	1 ***	6	170,000	264
SPIRAL COLUMN REINFORCING STEEL				769 kg

CLASS A CONCRETE BREAKDOWN

POUR #2 (COLUMNS)	= 3.4 m ³
POUR #3 (CAP)	= 12.2 m ³
TOTAL CLASS A CONCRETE	= 15.6 m ³

DRILLED PIER CONCRETE BREAKDOWN

POUR #1 (DRILLED PIERS)	= 18.7 m ³
1220mm Ø DRILLED PIERS NOT IN SOIL	= 8.0 m
1220mm Ø DRILLED PIERS IN SOIL	= 8.0 m

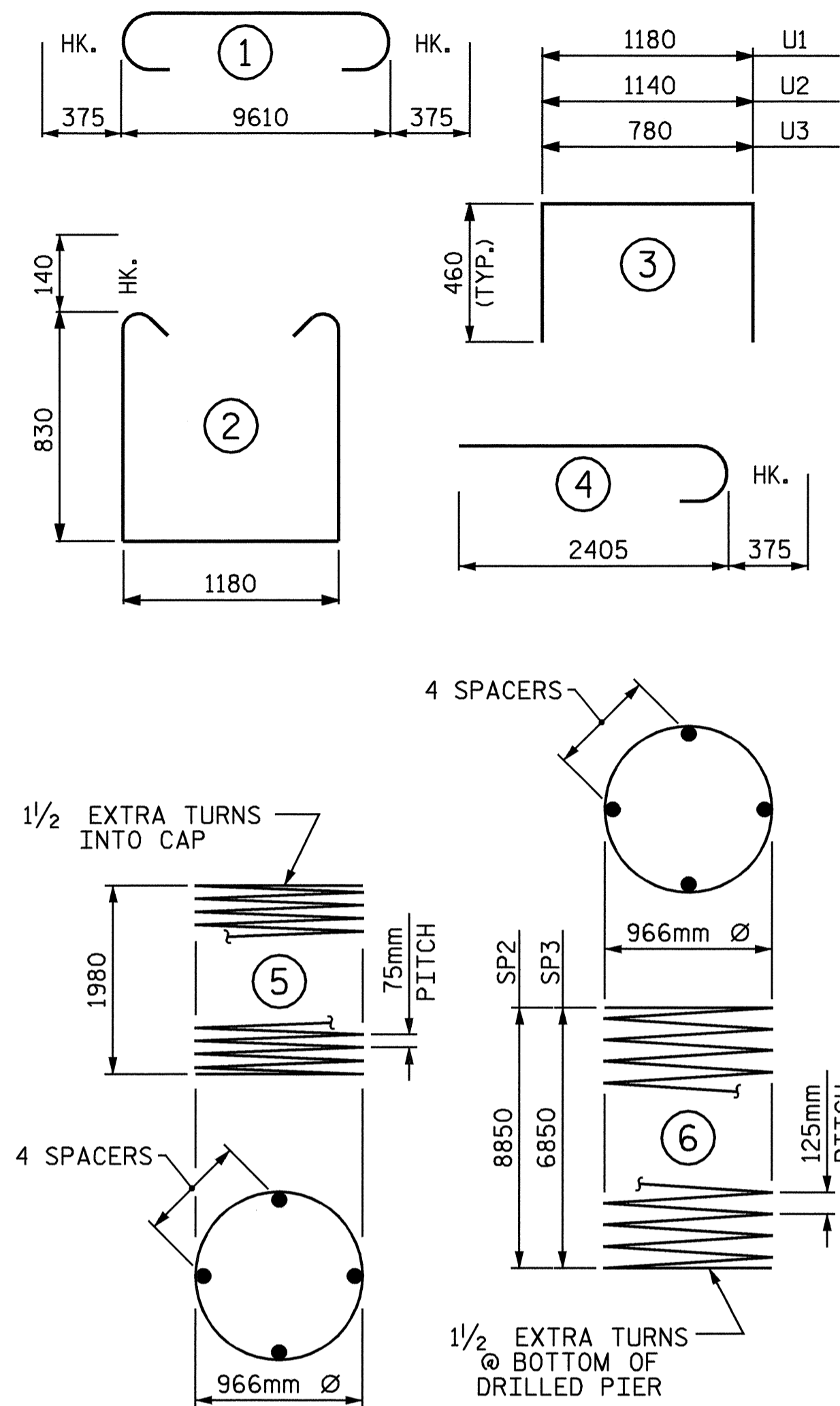
PERMANENT STEEL CASING FOR 1220mm DRILLED PIER	= 5.0 m
--	---------

SPT TESTING	= 2 EACH
-------------	----------

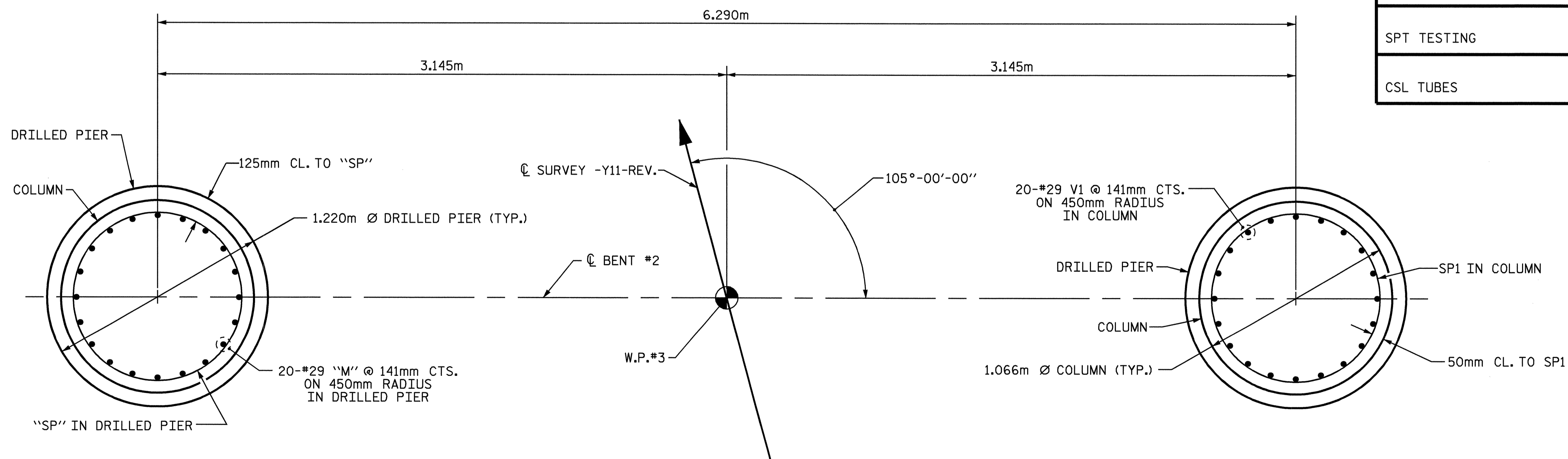
CSL TUBES	= 70.1 m
-----------	----------

BAR TYPES

ALL BAR DIMENSIONS ARE OUT TO OUT



** THE SP1 SPIRAL REINFORCING STEEL SHALL BE W20 OR D-20 COLD DRAWN WIRE OR #13 PLAIN OR DEFORMED BAR.
*** THE SP2 OR SP3 SPIRAL REINFORCING STEEL SHALL BE W31 OR D-31 COLD DRAWN WIRE OR #16 PLAIN OR DEFORMED BAR.



PLAN OF COLUMNS AND DRILLED PIERS

DRAWN BY : P. S. ERVIN DATE : 2/16/05
CHECKED BY : G. S. HOLMES DATE : 2/17/05

04-MAR-2005 11:46
N:\r2552b_ranch_road\r2552b_sd.bt2_04.dgn
gsholmes



PROJECT NO. R-2552B
JOHNSTON COUNTY
STATION: 14+72.000 -Y11-REV.

SHEET 2 OF 2

STATE OF NORTH CAROLINA
DEPARTMENT OF TRANSPORTATION
RALEIGH

SUBSTRUCTURE
BENT No. 2

REVISIONS						SHEET NO.	
NO.	BY:	DATE:	NO.	BY:	DATE:	S-17Z	
1			3			TOTAL SHEETS	431
2			4				

STR. #4