

NOTES

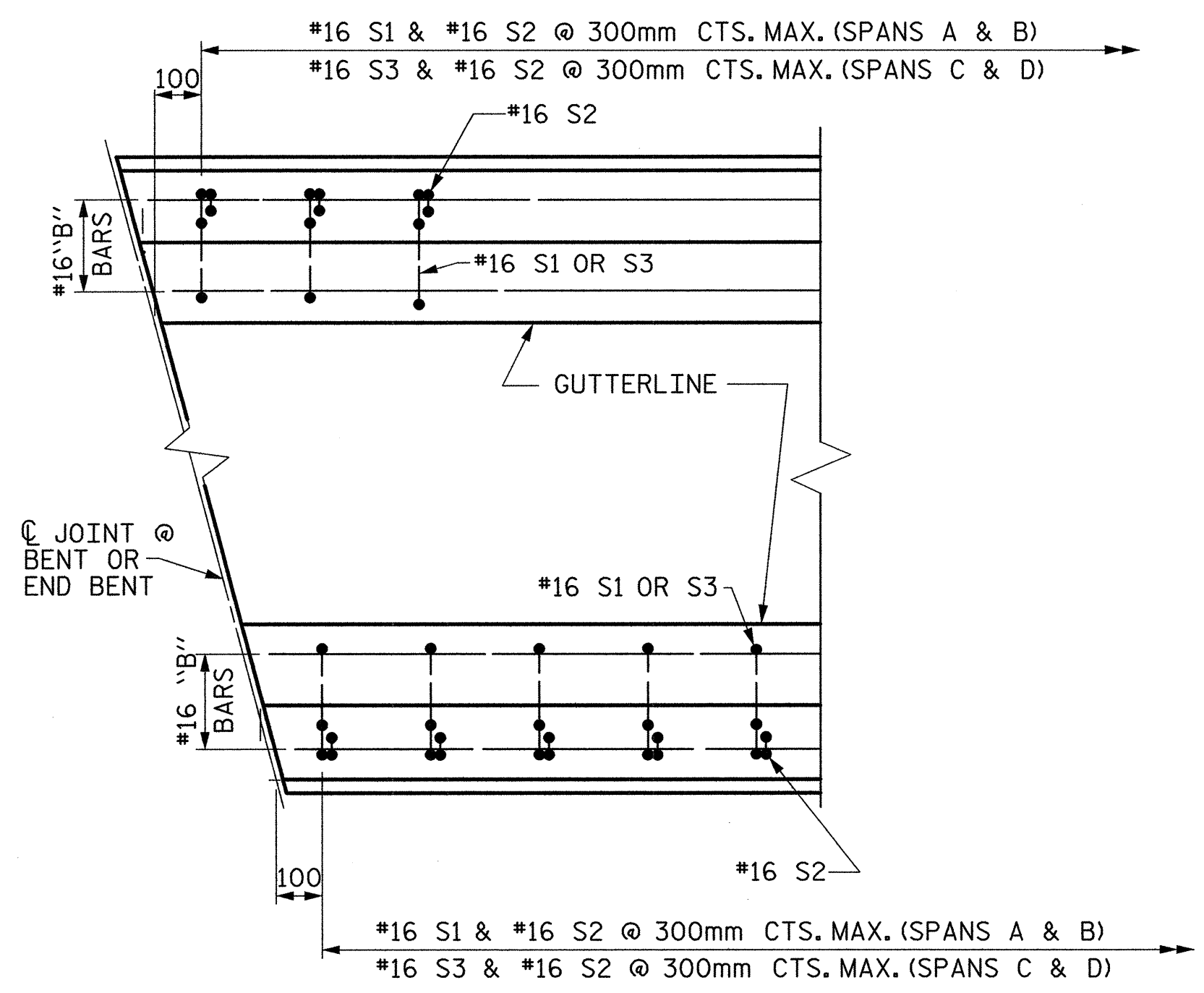
THE BARRIER RAIL IN EACH CONTINUOUS UNIT SHALL NOT BE CAST UNTIL ALL SLAB CONCRETE IN THAT UNIT HAS BEEN CAST AND HAS REACHED A MINIMUM COMPRESSIVE STRENGTH OF 20.7 MPa.

~~WHEN COMPRESSION JOINT SEAL OR EVAZOTE JOINT SEAL IS REQUIRED, THE JOINT IN THE DECK SHALL BE SAWED PRIOR TO THE CASTING OF BARRIER RAIL.~~

ALL REINFORCING STEEL IN BARRIER RAILS SHALL BE EPOXY COATED.

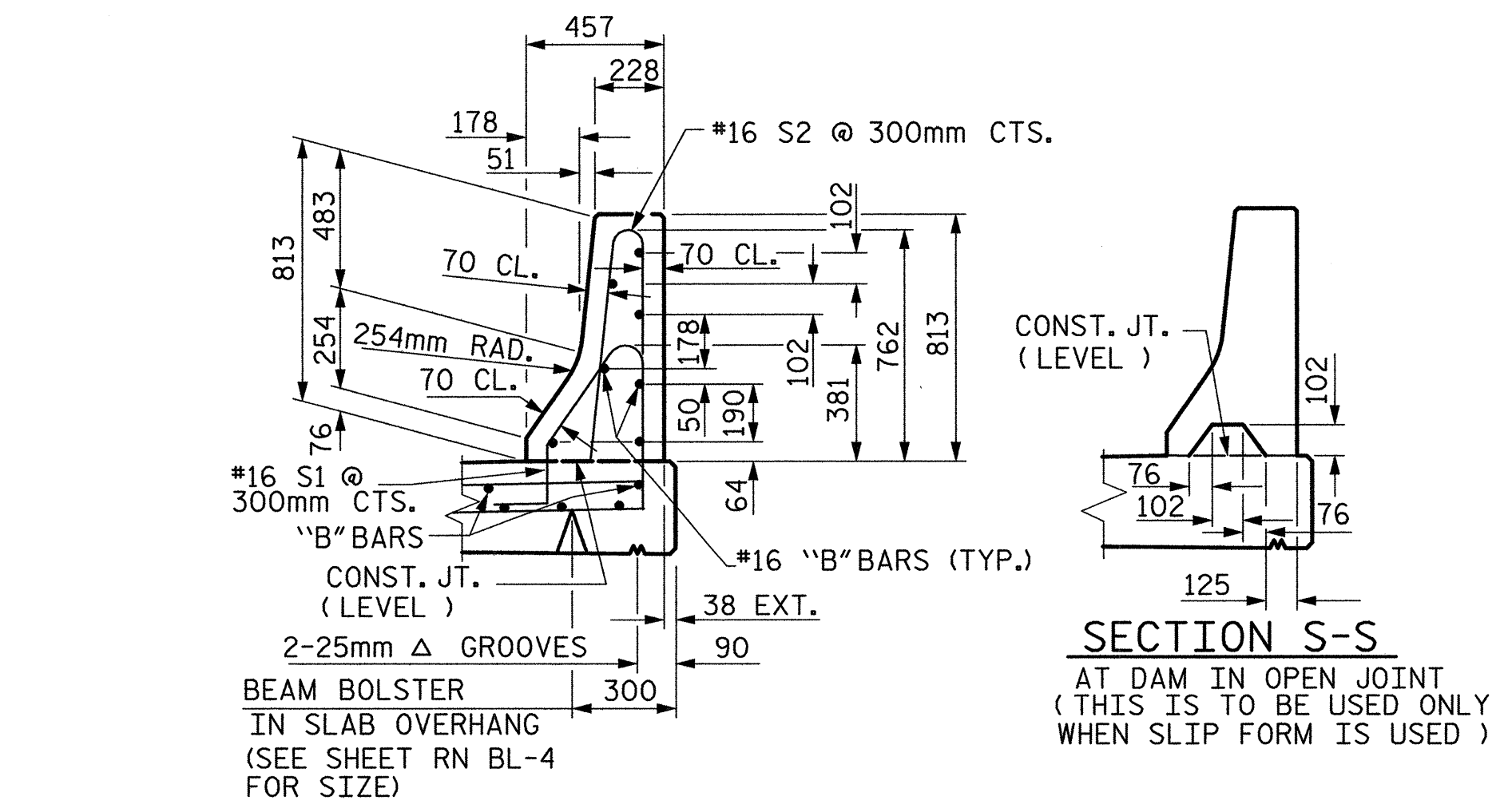
~~THE #16 S3 AND #16 S4 BARS SHALL BE INSTALLED, USING AN ADHESIVE ANCHORING SYSTEM, AFTER SAWING THE JOINT. FOR ADHESIVELY ANCHORED ANCHOR BOLTS OR DOWELS, SEE SPECIAL PROVISIONS. THE YIELD LOAD FOR THE #16 S3 AND #16 S4 BARS IS 82.7 kN. FIELD TESTING FOR THE ADHESIVE BONDING SYSTEM IS NOT REQUIRED.~~

VERTICAL GROOVED CONTRACTION JOINTS, 12mm IN DEPTH, SHALL BE TOOLED IN ALL EXPOSED FACES OF THE BARRIER RAIL AND IN ACCORDANCE WITH ARTICLE 825-10(B) OF THE STANDARD SPECIFICATIONS. THE CONTRACTION JOINT SHALL BE LOCATED AT EACH THIRD POINT BETWEEN BARRIER RAIL EXPANSION JOINTS. ONLY ONE CONTRACTION JOINT IS REQUIRED AT MIDPOINT OF BARRIER RAIL SEGMENTS LESS THAN 6.1m IN LENGTH AND NO CONTRACTION JOINTS ARE REQUIRED FOR THOSE SEGMENTS LESS THAN 3.5m IN LENGTH.

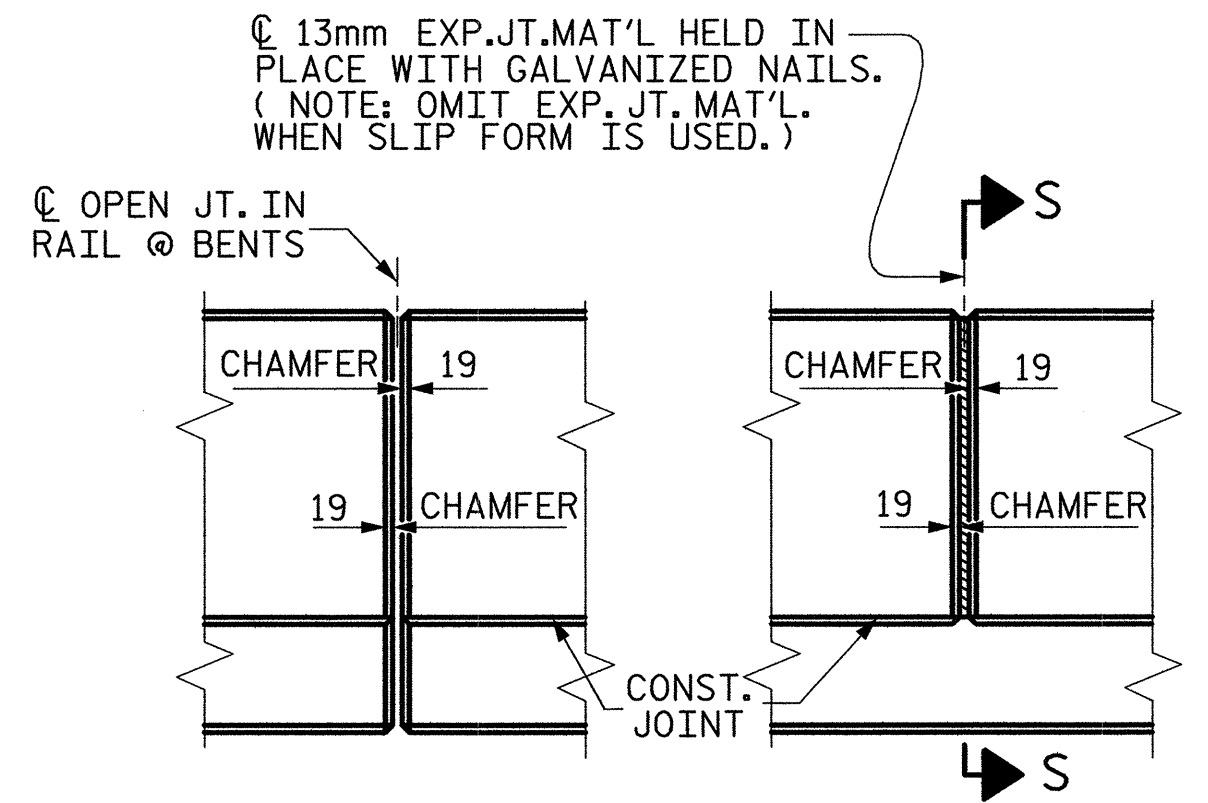
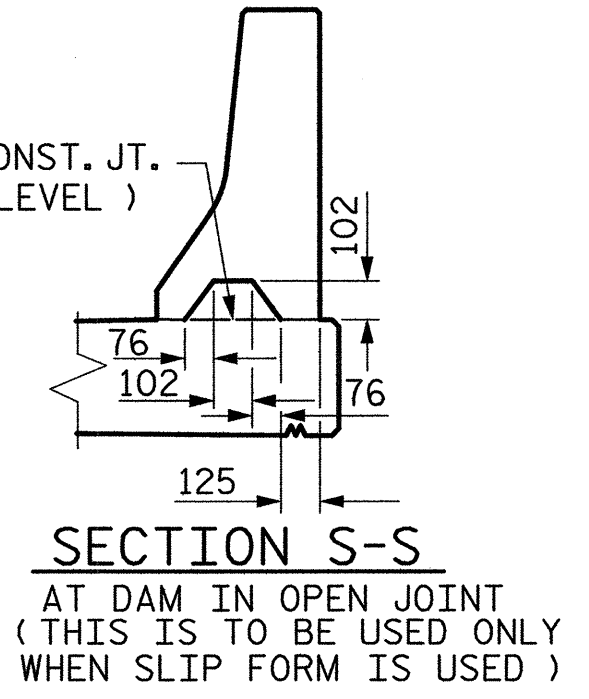


PLAN

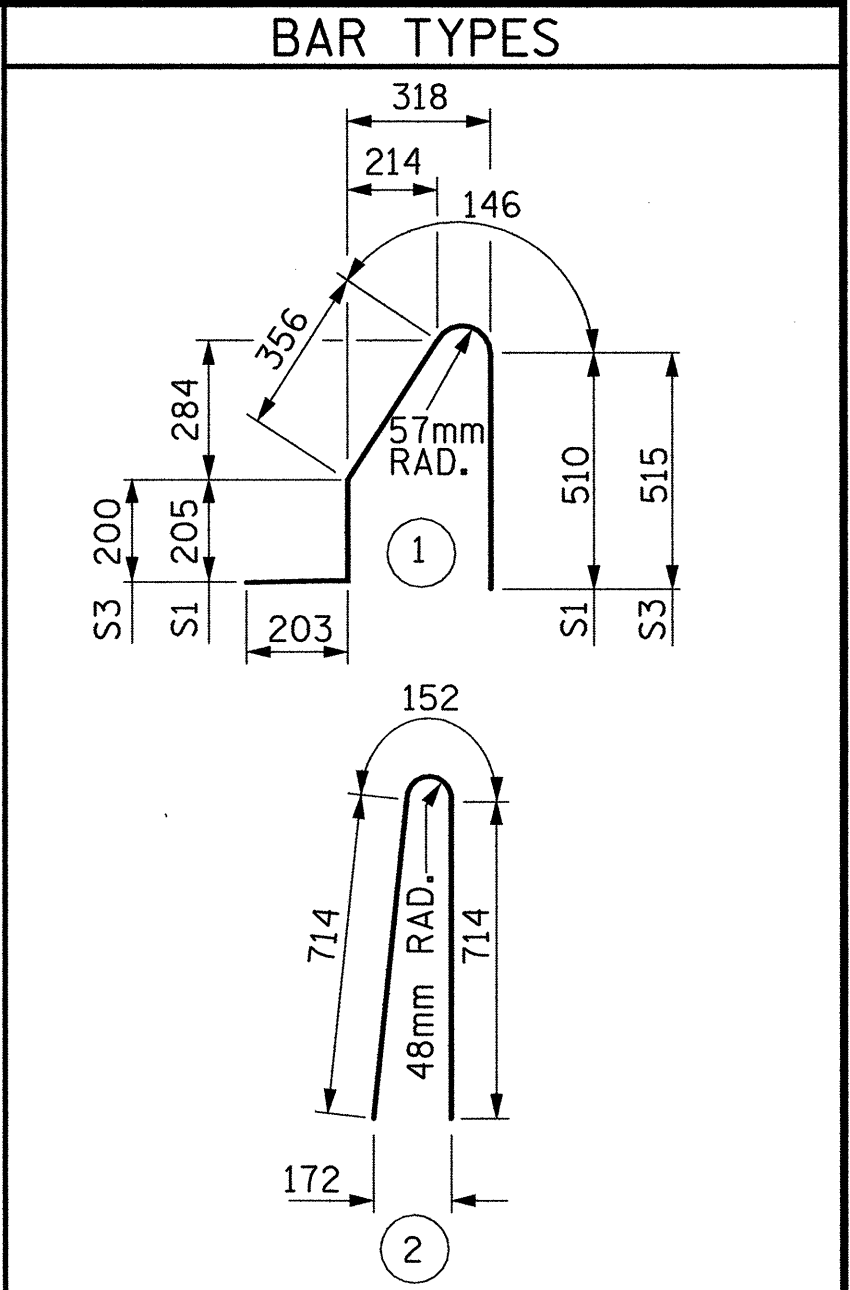
END OF RAIL DETAILS



SECTION THRU RAIL



ELEVATION AT EXPANSION JOINTS



ALL BAR DIMENSIONS ARE OUT TO OUT

BILL OF MATERIAL FOR CONCRETE BARRIER RAIL ONLY

BAR	NO.	SIZE	TYPE	LENGTH	WEIGHT
* S1	346	#16	1	1420	763
* S2	866	#16	2	1580	2124
* S3	520	#16	1	1420	1146
* B1	56	#16	STR	8640	751
* B2	56	#16	STR	4860	422
* B3	56	#16	STR	4460	388
* B4	112	#16	STR	7740	1345

* EPOXY COATED REINFORCING STEEL 6939 kg

CLASS AA CONCRETE 65.3 CU. METER

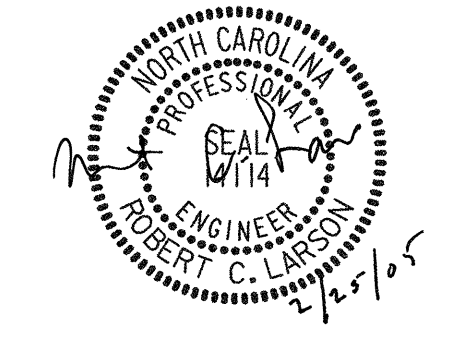
CONCRETE BARRIER RAIL 260.194 METERS

PROJECT NO. R-2552C
 JOHNSTON COUNTY
 STATION: 110+37.000 -L2RT- POC

STATE OF NORTH CAROLINA
 DEPARTMENT OF TRANSPORTATION
 RALEIGH
 STANDARD CONCRETE BARRIER RAIL (RIGHT LANE)
 STD. No. CBR1SM

NO.	BY:	DATE:	NO.	BY:	DATE:	SHEET NO.
1			3			TOTAL SHEETS
2			4			431

THIS STANDARD DRAWING REVIEWED & ADOPTED FOR USE AT THE REFERENCED LOCATION BY THE UNDERSIGNED:



REFERENCE NO. BR-20

BARRIER RAIL DETAILS

02/21/2005 07:59:37 AM G:\p\proj\2004\233\00R-2552A\Structures\S1\Right Lane\BR252C.SP_BR_02.dgn

ASSEMBLED BY : W. B. ALLEN	DATE : 10/04
CHECKED BY : R. C. LARSON	DATE : 11/04
DRAWN BY : ARB 5/87	REV. 8/16/99 RWW/LES
CHECKED BY : SJD 9/87	REV. 10/17/00 RWW/LES
	REV. 5/7/03R RWW/JTE