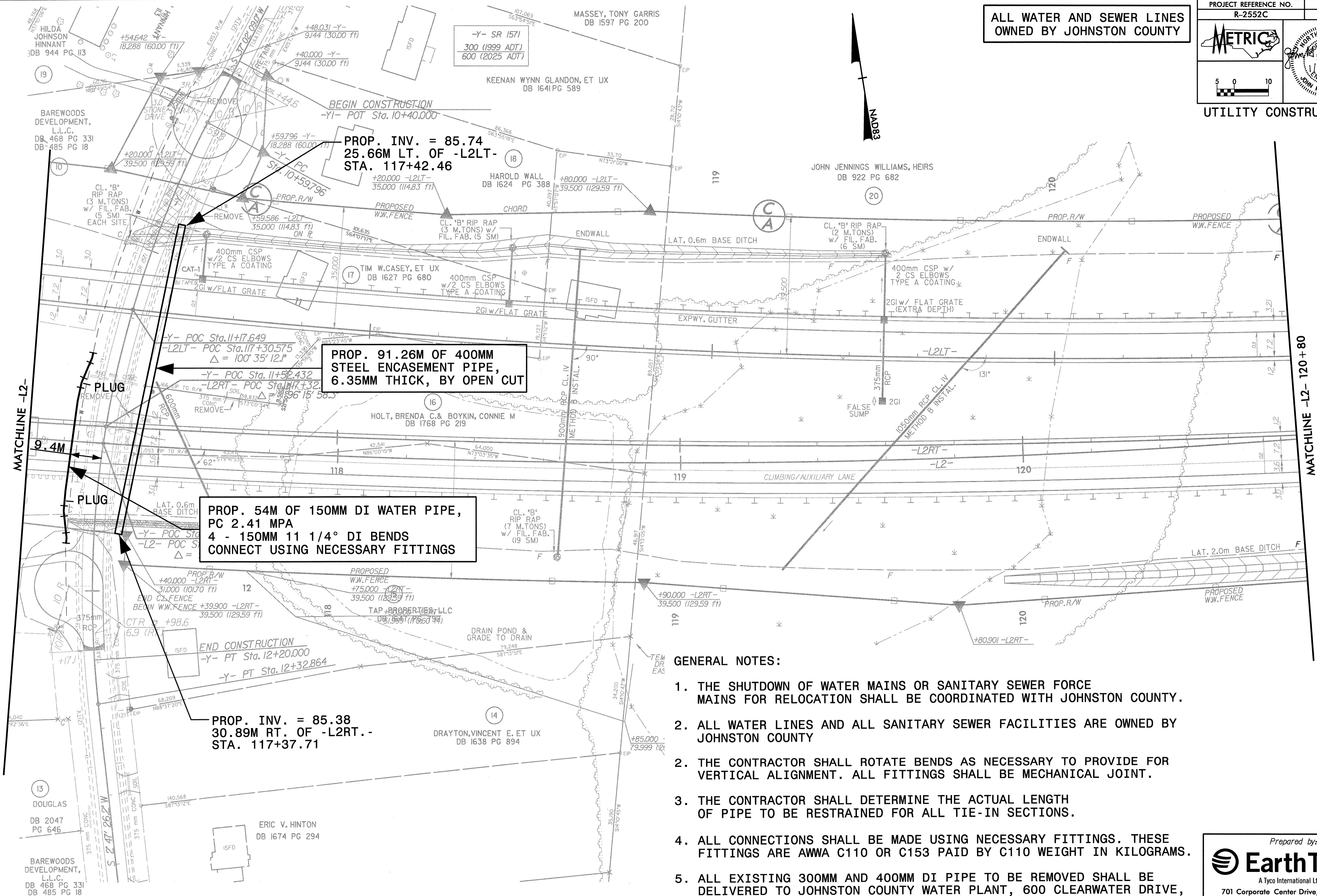
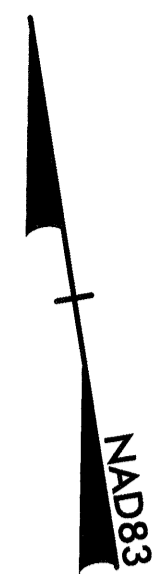


ALL WATER AND SEWER LINES OWNED BY JOHNSTON COUNTY



PROP. INV. = 85.74  
25.66M LT. OF -L2LT-  
STA. 117+42.46

PROP. 91.26M OF 400MM  
STEEL ENCASMENT PIPE,  
6.35MM THICK, BY OPEN CUT

PROP. 54M OF 150MM DI WATER PIPE,  
PC 2.41 MPA  
4 - 150MM 11 1/4° DI BENDS  
CONNECT USING NECESSARY FITTINGS

PROP. INV. = 85.38  
30.89M RT. OF -L2RT-  
STA. 117+37.71

**GENERAL NOTES:**

1. THE SHUTDOWN OF WATER MAINS OR SANITARY SEWER FORCE MAINS FOR RELOCATION SHALL BE COORDINATED WITH JOHNSTON COUNTY.
2. ALL WATER LINES AND ALL SANITARY SEWER FACILITIES ARE OWNED BY JOHNSTON COUNTY
2. THE CONTRACTOR SHALL ROTATE BENDS AS NECESSARY TO PROVIDE FOR VERTICAL ALIGNMENT. ALL FITTINGS SHALL BE MECHANICAL JOINT.
3. THE CONTRACTOR SHALL DETERMINE THE ACTUAL LENGTH OF PIPE TO BE RESTRAINED FOR ALL TIE-IN SECTIONS.
4. ALL CONNECTIONS SHALL BE MADE USING NECESSARY FITTINGS. THESE FITTINGS ARE AWWA C110 OR C153 PAID BY C110 WEIGHT IN KILOGRAMS.
5. ALL EXISTING 300MM AND 400MM DI PIPE TO BE REMOVED SHALL BE DELIVERED TO JOHNSTON COUNTY WATER PLANT, 600 CLEARWATER DRIVE, SMITHFIELD, NORTH CAROLINA

Prepared by:

**EarthTech**

A Tyco International Ltd. Company

701 Corporate Center Drive, Suite 475  
Raleigh, NC 27607  
(919) 854-6200 - (919) 854-6259(fax)

C:\V2987\N=2552c\pco\loc\N=2552c\loc2\psh  
 5/12/2005 9:36:50 AM