

ALL WATER AND SEWER LINES OWNED BY JOHNSTON COUNTY

PROP. 1 - RELOCATE EXISTING FIRE HYDRANT
2M OF 150MM DI WATER PIPE, PC 2.41 MPA
1 - 200MM X 150MM DI TEE
1 - 150MM GATE VALVE & VALVE BOX, 1.38 MPA WP
CONNECT USING NECESSARY FITTINGS

PROP. 397M - FILL OR REMOVE ABANDONED 300MM PIPE, PVC FORCE MAIN

PROP. 398M - FILL OR REMOVE ABANDONED 400MM PIPE, DI WATER

PROP. 396M OF 400MM PVC FORCE MAIN SEWER PIPE, SDR 21, 1.38 MPA WP
2 - 400MM 11 1/4° DI BENDS
3 - 400MM X 45° DI BENDS
CONNECT USING NECESSARY FITTINGS
SEE PROFILE FM4 UC-23

PROP. 1 - BREAK DOWN, PLUG & FILL ABANDONED UTILITY MANHOLE

PROP. 1 - RELOCATE EXISTING FIRE HYDRANT
9M OF 150MM DI WATER PIPE, PC 2.41 MPA
1 - 500MM X 150MM DI TEE
1 - 150MM GATE VALVE & VALVE BOX, 1.38 MPA WP
CONNECT USING NECESSARY FITTINGS

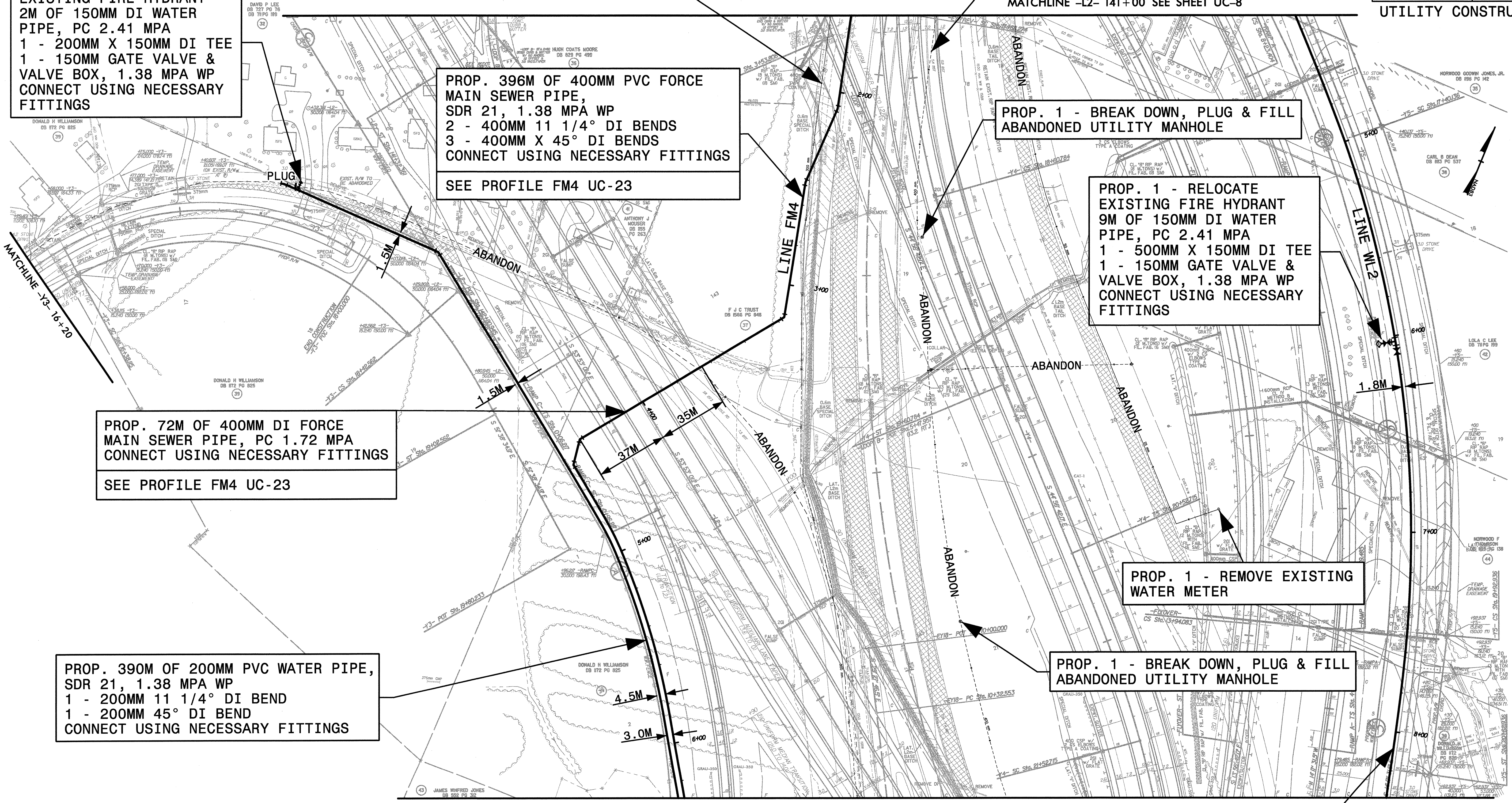
PROP. 72M OF 400MM DI FORCE MAIN SEWER PIPE, PC 1.72 MPA
CONNECT USING NECESSARY FITTINGS
SEE PROFILE FM4 UC-23

PROP. 390M OF 200MM PVC WATER PIPE, SDR 21, 1.38 MPA WP
1 - 200MM 11 1/4° DI BEND
1 - 200MM 45° DI BEND
CONNECT USING NECESSARY FITTINGS

PROP. 1 - REMOVE EXISTING WATER METER

PROP. 1 - BREAK DOWN, PLUG & FILL ABANDONED UTILITY MANHOLE

PROP. 402M OF 500MM DI WATER PIPE, PC 1.72 MPA
1 - 500MM BUTTERFLY VALVE & VALVE BOX
CONNECT USING NECESSARY FITTINGS
SEE PROFILE WL2 SHEET UC-19



G:\7987\N\2552c\p\0\uc\2552cuc09.dwg
 02/28/2005