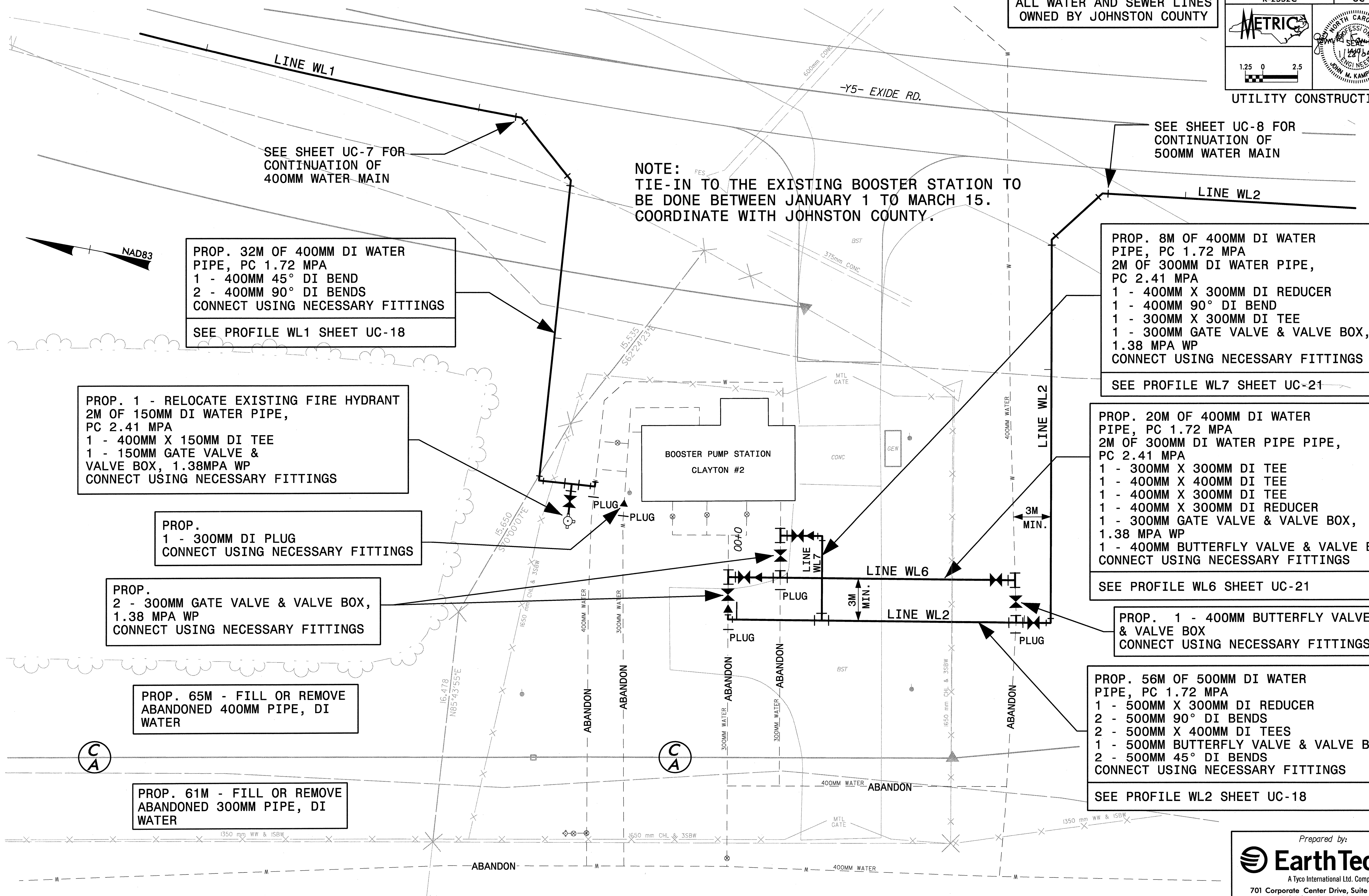


ALL WATER AND SEWER LINES OWNED BY JOHNSTON COUNTY

UTILITY CONSTRUCTION



SEE SHEET UC-7 FOR CONTINUATION OF 400MM WATER MAIN

NOTE: TIE-IN TO THE EXISTING BOOSTER STATION TO BE DONE BETWEEN JANUARY 1 TO MARCH 15. COORDINATE WITH JOHNSTON COUNTY.

SEE SHEET UC-8 FOR CONTINUATION OF 500MM WATER MAIN

PROP. 32M OF 400MM DI WATER PIPE, PC 1.72 MPA
 1 - 400MM 45° DI BEND
 2 - 400MM 90° DI BENDS
 CONNECT USING NECESSARY FITTINGS
 SEE PROFILE WL1 SHEET UC-18

PROP. 8M OF 400MM DI WATER PIPE, PC 1.72 MPA
 2M OF 300MM DI WATER PIPE, PC 2.41 MPA
 1 - 400MM X 300MM DI REDUCER
 1 - 400MM 90° DI BEND
 1 - 300MM X 300MM DI TEE
 1 - 300MM GATE VALVE & VALVE BOX, 1.38 MPA WP
 CONNECT USING NECESSARY FITTINGS
 SEE PROFILE WL7 SHEET UC-21

PROP. 1 - RELOCATE EXISTING FIRE HYDRANT
 2M OF 150MM DI WATER PIPE, PC 2.41 MPA
 1 - 400MM X 150MM DI TEE
 1 - 150MM GATE VALVE & VALVE BOX, 1.38MPA WP
 CONNECT USING NECESSARY FITTINGS

PROP. 20M OF 400MM DI WATER PIPE, PC 1.72 MPA
 2M OF 300MM DI WATER PIPE, PC 2.41 MPA
 1 - 300MM X 300MM DI TEE
 1 - 400MM X 400MM DI TEE
 1 - 400MM X 300MM DI TEE
 1 - 400MM X 300MM DI REDUCER
 1 - 300MM GATE VALVE & VALVE BOX, 1.38 MPA WP
 1 - 400MM BUTTERFLY VALVE & VALVE BOX
 CONNECT USING NECESSARY FITTINGS
 SEE PROFILE WL6 SHEET UC-21

PROP. 1 - 300MM DI PLUG
 CONNECT USING NECESSARY FITTINGS

PROP. 2 - 300MM GATE VALVE & VALVE BOX, 1.38 MPA WP
 CONNECT USING NECESSARY FITTINGS

PROP. 1 - 400MM BUTTERFLY VALVE & VALVE BOX
 CONNECT USING NECESSARY FITTINGS

PROP. 65M - FILL OR REMOVE ABANDONED 400MM PIPE, DI WATER

PROP. 56M OF 500MM DI WATER PIPE, PC 1.72 MPA
 1 - 500MM X 300MM DI REDUCER
 2 - 500MM 90° DI BENDS
 2 - 500MM X 400MM DI TEES
 1 - 500MM BUTTERFLY VALVE & VALVE BOX
 2 - 500MM 45° DI BENDS
 CONNECT USING NECESSARY FITTINGS
 SEE PROFILE WL2 SHEET UC-18

PROP. 61M - FILL OR REMOVE ABANDONED 300MM PIPE, DI WATER

G:\7587\N\2552c\proj\loc\2552cuc16.pst 01/26/2005 03:55:22 PM