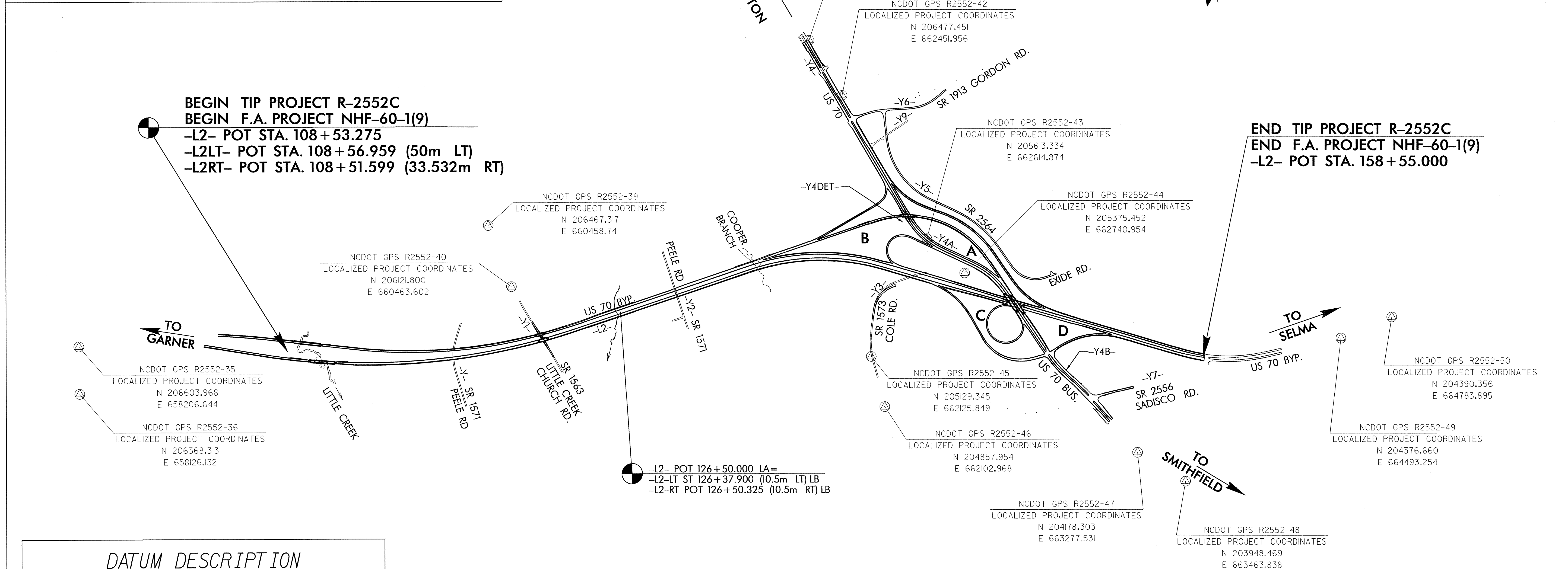
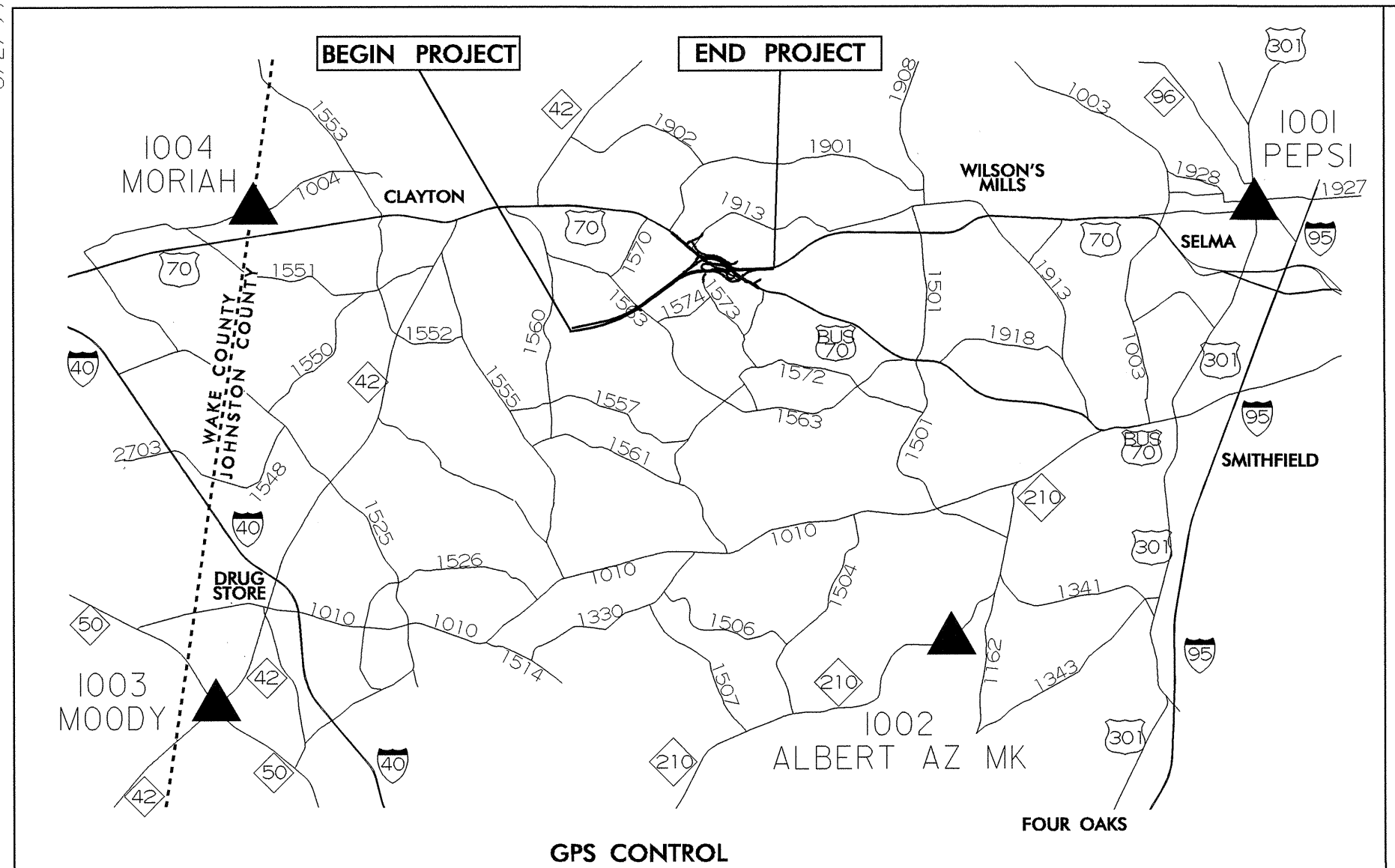


SURVEY CONTROL SHEET R-2552C



BEGIN TIP PROJECT R-2552C
BEGIN F.A. PROJECT NHF-60-1(9)
 -L2- POT STA. 108+53.275
 -L2LT- POT STA. 108+56.959 (50m LT)
 -L2RT- POT STA. 108+51.599 (33.532m RT)

END TIP PROJECT R-2552C
END F.A. PROJECT NHF-60-1(9)
 -L2- POT STA. 158+55.000

DATUM DESCRIPTION

THE LOCALIZED COORDINATE SYSTEM DEVELOPED FOR THIS PROJECT IS BASED ON THE STATE PLANE COORDINATES ESTABLISHED BY NCGS FOR MONUMENT "LAKE DAM" WITH NAD 83 STATE PLANE GRID COORDINATES OF NORTHING: 222085.5690(m) EASTING: 636096.3610(m) THE AVERAGE COMBINED GRID FACTOR USED ON THIS PROJECT (GROUND TO GRID) IS: 0.999893375 THE N.C. LAMBERT GRID BEARING AND LOCALIZED HORIZONTAL GROUND DISTANCE FROM "LAKE DAM" TO -L2- STATION 108+53.275 IS S 55°32'00.08" E @ 28,065.731m ALL LINEAR DIMENSIONS ARE LOCALIZED HORIZONTAL DISTANCES VERTICAL DATUM USED IS NGVD 29

NOTES:

THE CONTROL DATA FOR THIS PROJECT CAN BE FOUND ELECTRONICALLY BY SELECTING PROJECT CONTROL DATA AT:
[HTTP://WWW.DOH.DOT.STATE.NC.US/PRECONSTRUCT/HIGHWAY/LOCATION/PROJECT](http://www.doh.dot.state.nc.us/preconstruct/highway/location/project)
 FILE : R2552C_LS_CONTROL_050405.TXT

SITE CALIBRATION INFORMATION HAS NOT BEEN PROVIDED FOR THIS PROJECT. IF FURTHER INFORMATION IS NEEDED, PLEASE CONTACT THE LOCATION AND SURVEYS UNIT.

⊙ INDICATES GEODETIC CONTROL MONUMENTS USED OR SET FOR HORIZONTAL PROJECT CONTROL BY THE NCDOT LOCATION AND SURVEYS UNIT.

PROJECT CONTROL ESTABLISHED USING GLOBAL POSITIONING SYSTEM. CONTROL NETWORK ESTABLISHED USING STATIC GPS FROM EXISTING NCGS MONUMENTATION.

NOTE: DRAWING NOT TO SCALE

6/2/99
12-APR-2005 14:32
r:\roadway\proj\2552c_ls_1c_050405.dgn
alanray