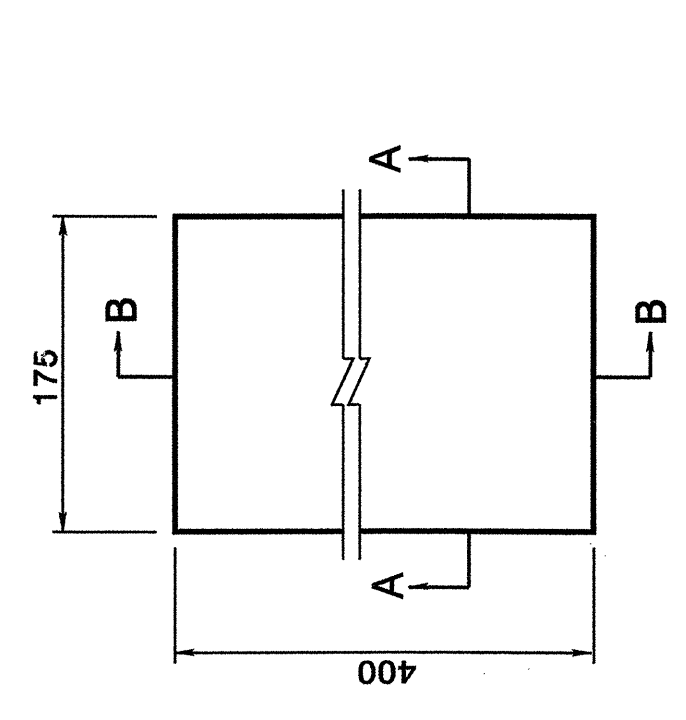




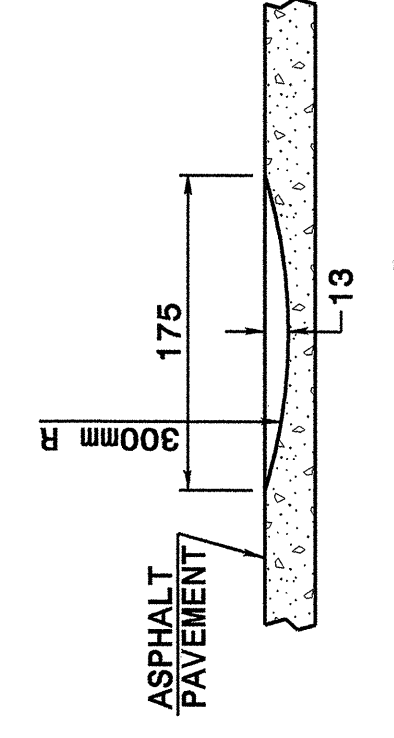
STATE OF NORTH CAROLINA DEPT. OF TRANSPORTATION DIVISION OF HIGHWAYS RALEIGH, N.C.

METRIC DETAIL DRAWING FOR ASPHALT SHOULDERS MILLED RUMBLE STRIPS

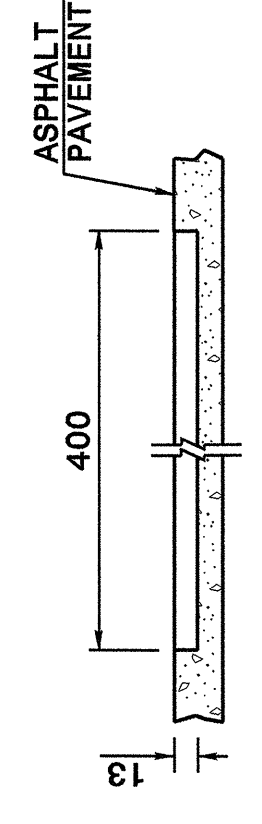
SHEET 1 OF 2 665D01



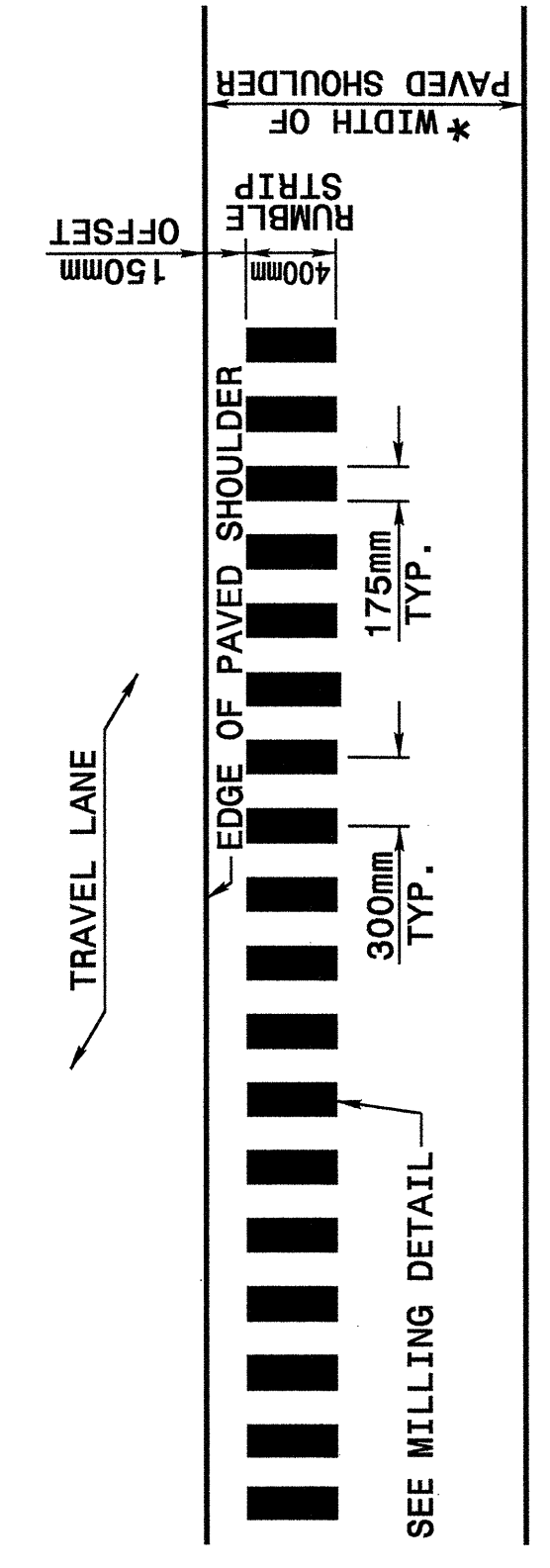
PLAN VIEW MILLING DETAIL



SECTION A-A

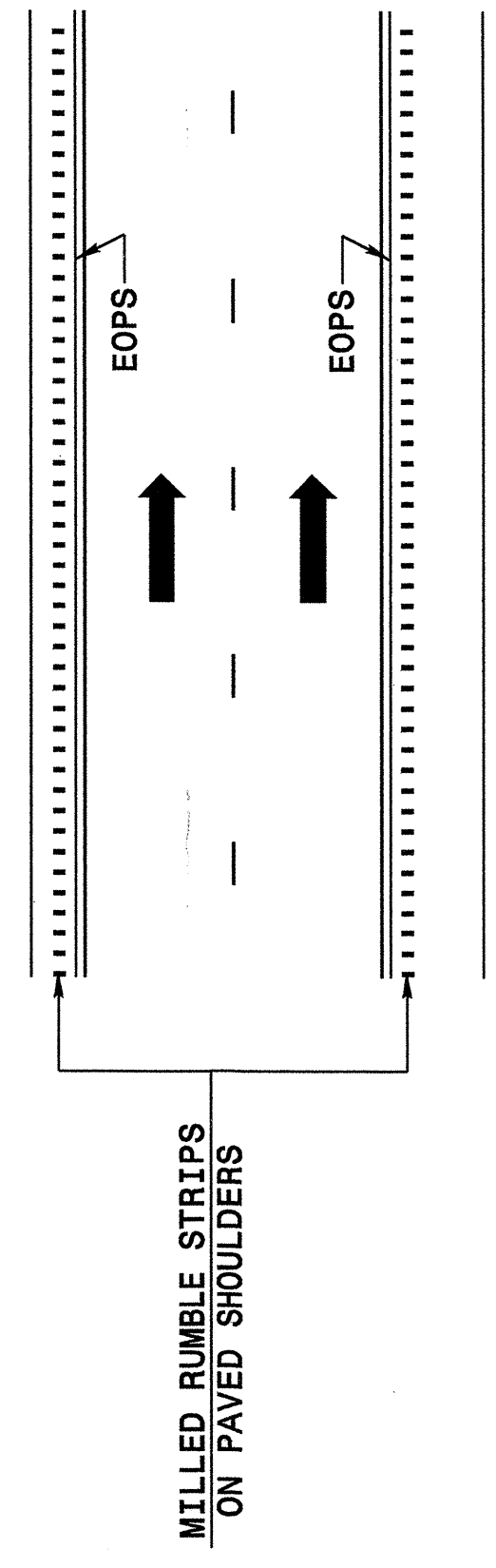


SECTION B-B



PLAN VIEW PAVED SHOULDER

\* FOR WIDTHS SEE TYPICAL SECTIONS AND PLAN SHEETS



LANE TREATMENT

Note: This drawing is dimensioned in millimeters unless otherwise depicted within the drawing.

STATE OF NORTH CAROLINA DEPT. OF TRANSPORTATION DIVISION OF HIGHWAYS RALEIGH, N.C.

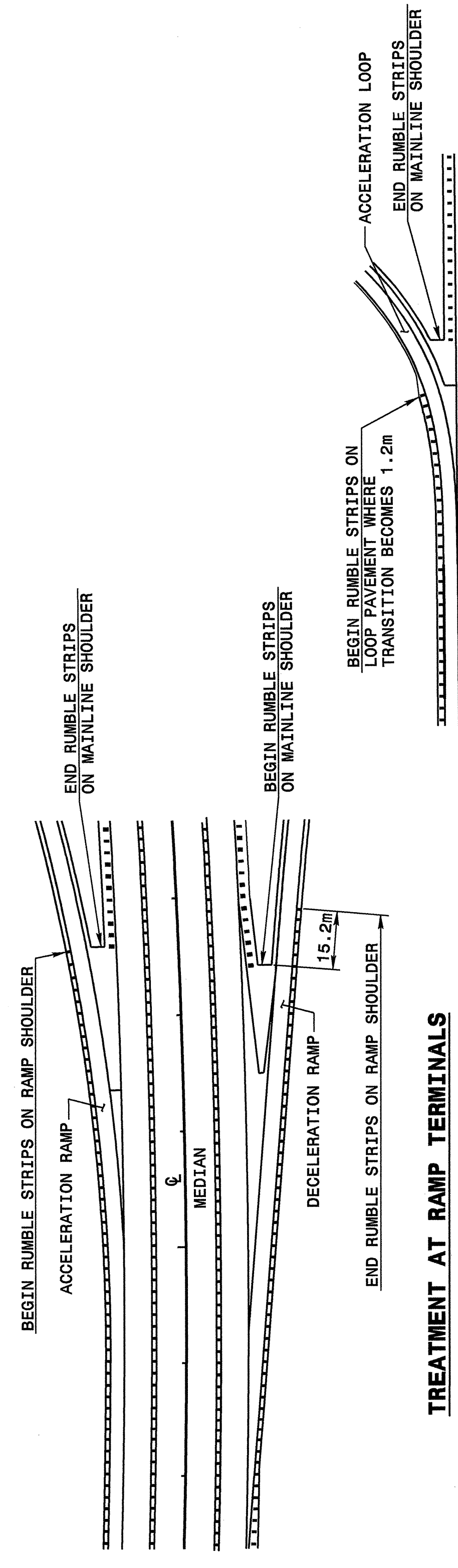
METRIC DETAIL DRAWING FOR ASPHALT SHOULDERS MILLED RUMBLE STRIPS

SHEET 1 OF 2 665D01

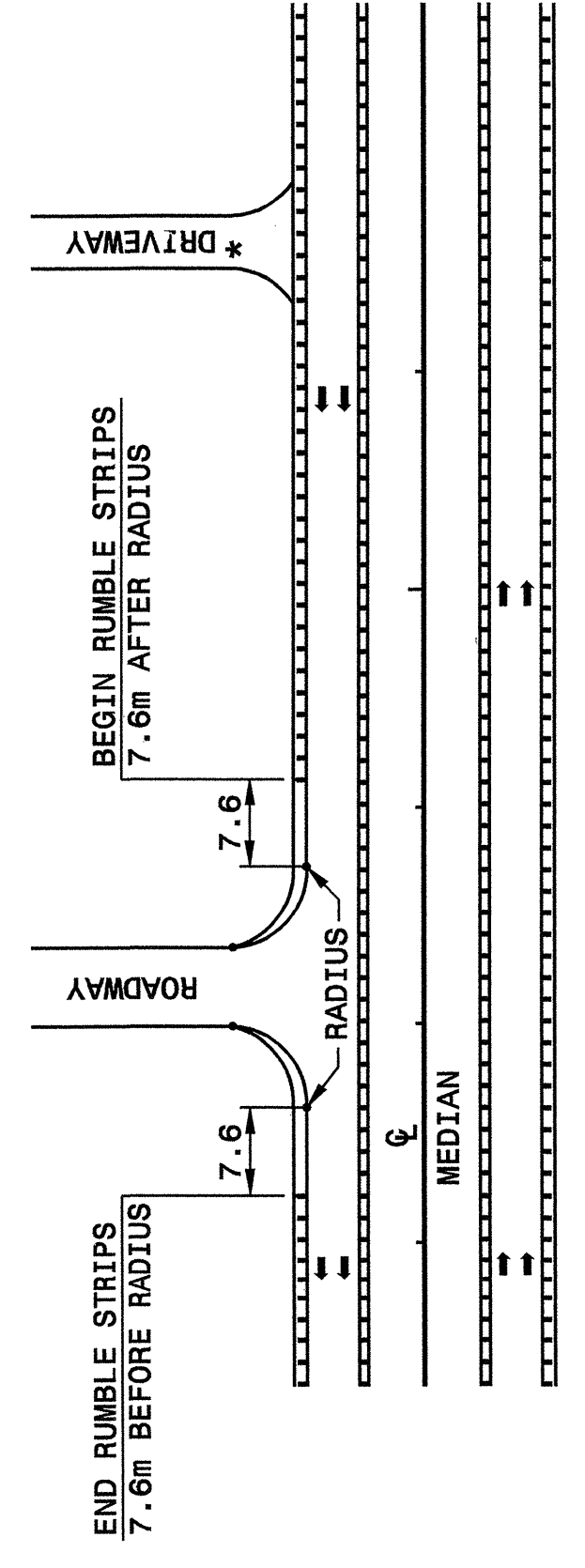
STATE OF NORTH CAROLINA DEPT. OF TRANSPORTATION DIVISION OF HIGHWAYS RALEIGH, N.C.

METRIC DETAIL DRAWING FOR ASPHALT SHOULDERS MILLED RUMBLE STRIPS

SHEET 2 OF 2 665D01



TREATMENT AT RAMP TERMINALS



TREATMENT AT INTERSECTIONS (ROADWAY OR DRIVEWAY)

Note: This drawing is dimensioned in millimeters unless otherwise depicted within the drawing.

STATE OF NORTH CAROLINA DEPT. OF TRANSPORTATION DIVISION OF HIGHWAYS RALEIGH, N.C.

METRIC DETAIL DRAWING FOR ASPHALT SHOULDERS MILLED RUMBLE STRIPS

SHEET 2 OF 2 665D01

28-OCT-2004 11:38 AM \\Special Details\ercoward\stds\02\stds to Special Details\english\665d01\0665d01.dgn ericward AT 05212260

PROJECT SERVICES UNIT  
STANDARDS AND SPECIAL DESIGN  
Office 919-250-4128 FAX 919-250-4119

**SEE PLATE FOR TITLE**

ORIGINAL BY: 2002 STANDARDS DATE: 01-15-02  
 MODIFIED BY: E.E. WARD DATE: 09-16-04  
 CHECKED BY: [Signature] DATE: 11/2/04  
 FILE SPEC.: stds/02stdstodetails/metric/665d01.dgn

