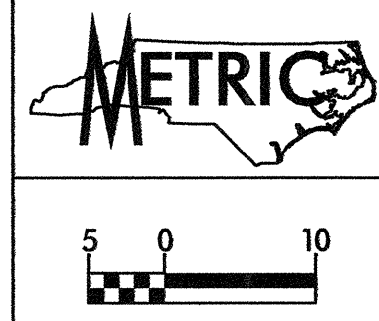


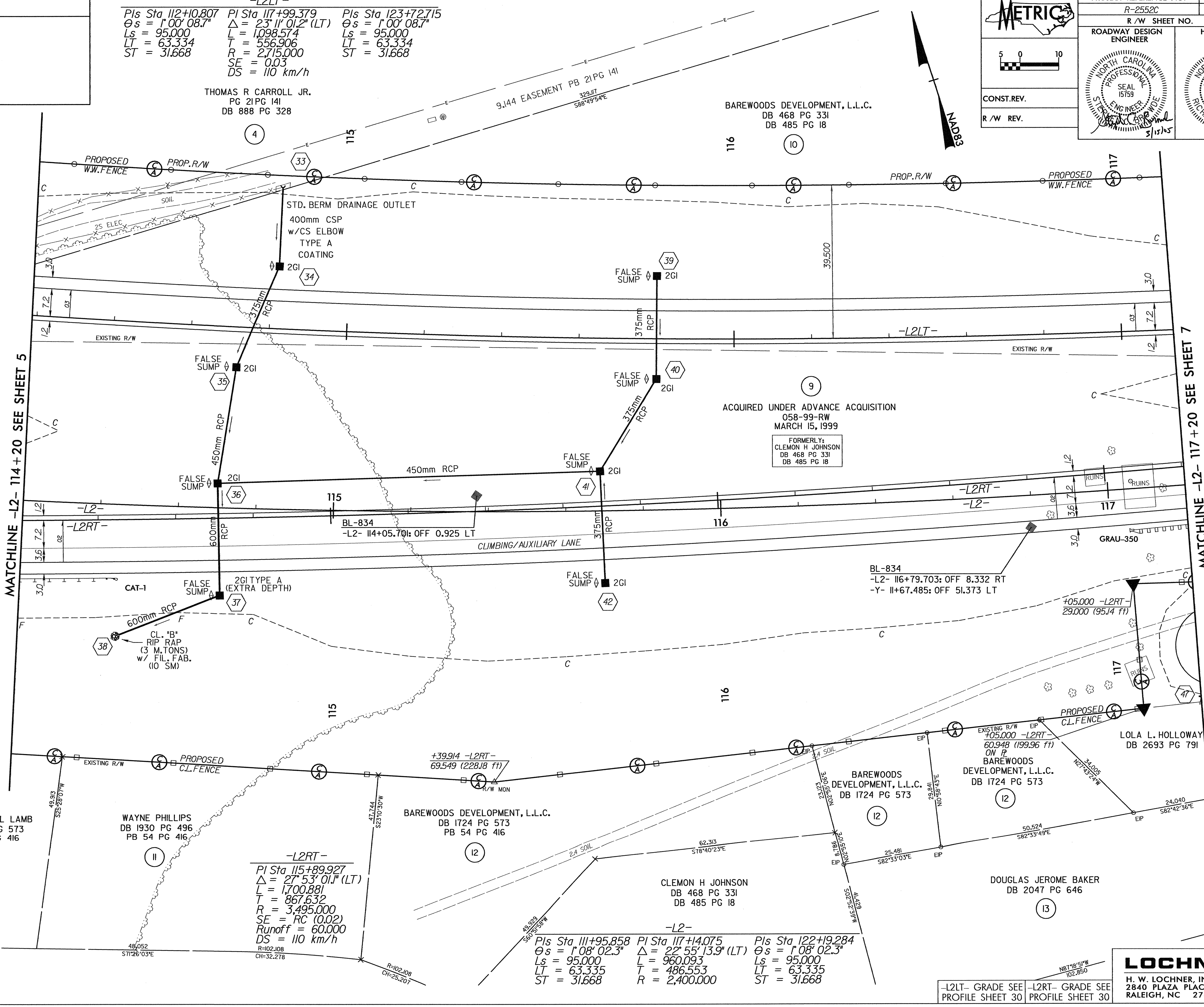
REVISIONS

**-L2LT-**  
 PIs Sta 112+10.807 PI Sta 117+99.379 PIs Sta 123+72.715  
 $\theta_s = 1^{\circ}00'08.7''$   $\Delta = 23^{\circ}11'01.2''$  (LT)  $\theta_s = 1^{\circ}00'08.7''$   
 $L_s = 95.000$   $L = 1,098.574$   $L_s = 95.000$   
 $LT = 63.334$   $T = 556.906$   $LT = 63.334$   
 $ST = 31.668$   $R = 2,715.000$   $ST = 31.668$   
 $SE = 0.03$   
 $DS = 110$  km/h

THOMAS R CARROLL JR.  
 PG 21 PG 141  
 DB 888 PG 328



PROJECT REFERENCE NO. R-2552C	SHEET NO. 6
ROADWAY DESIGN ENGINEER	
HYDRAULICS ENGINEER	
CONST. REV.	R/W REV.



MATCHLINE -L2- 114+20 SEE SHEET 5

MATCHLINE -L2- 117+20 SEE SHEET 7

**-L2RT-**  
 PIs Sta 115+89.927  
 $\Delta = 27^{\circ}53'01.1''$  (LT)  
 $L = 1,700.881$   
 $T = 867.632$   
 $R = 3,495.000$   
 $SE = RC$  (0.02)  
 Runoff = 60.000  
 $DS = 110$  km/h  
 R=102.108  
 CH=32.278

**-L2-**  
 PIs Sta 111+95.858 PI Sta 117+14.075 PIs Sta 122+19.284  
 $\theta_s = 1^{\circ}08'02.3''$   $\Delta = 22^{\circ}55'13.9''$  (LT)  $\theta_s = 1^{\circ}08'02.3''$   
 $L_s = 95.000$   $L = 960.093$   $L_s = 95.000$   
 $LT = 63.335$   $T = 486.553$   $LT = 63.335$   
 $ST = 31.668$   $R = 2,400.000$   $ST = 31.668$

T:\M\2005\1045\1045\DESIGN\2552C\RDY-FSH06.DGN  
 3/15/15 11:25 AM  
 1045.dwg

**LOCHNER**  
 H. W. LOCHNER, INC.  
 2840 PLAZA PLACE, SUITE 202  
 RALEIGH, NC 27612

-L2LT- GRADE SEE PROFILE SHEET 30  
 -L2RT- GRADE SEE PROFILE SHEET 30