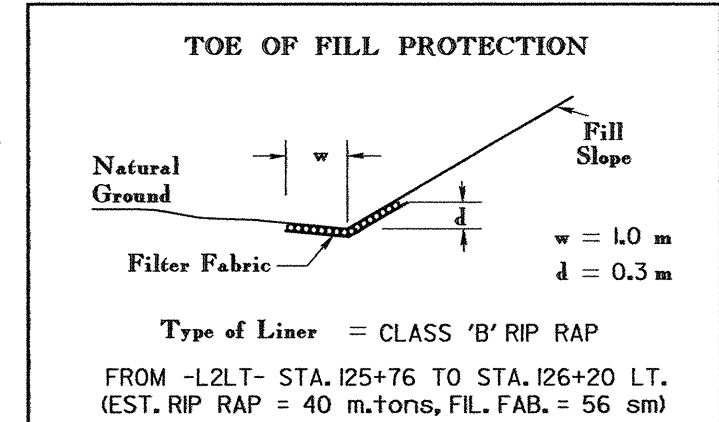
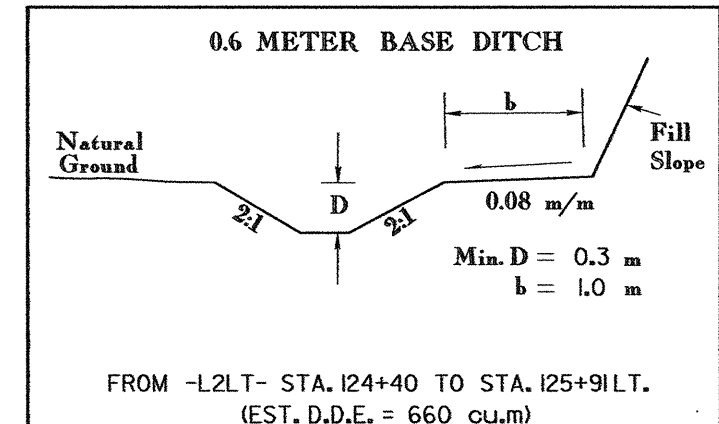


REVISIONS	



METRIC

PROJECT REFERENCE NO. R-2552C
SHEET NO. 9

R/W SHEET NO. ROADWAY DESIGN ENGINEER
HYDRAULICS ENGINEER

CONST. REV.
R/W REV.

NORTH CAROLINA PROFESSIONAL ENGINEER SEAL 15159
STEPHEN R. BROWN

NORTH CAROLINA PROFESSIONAL ENGINEER SEAL 6982
THOMAS N. SCARF

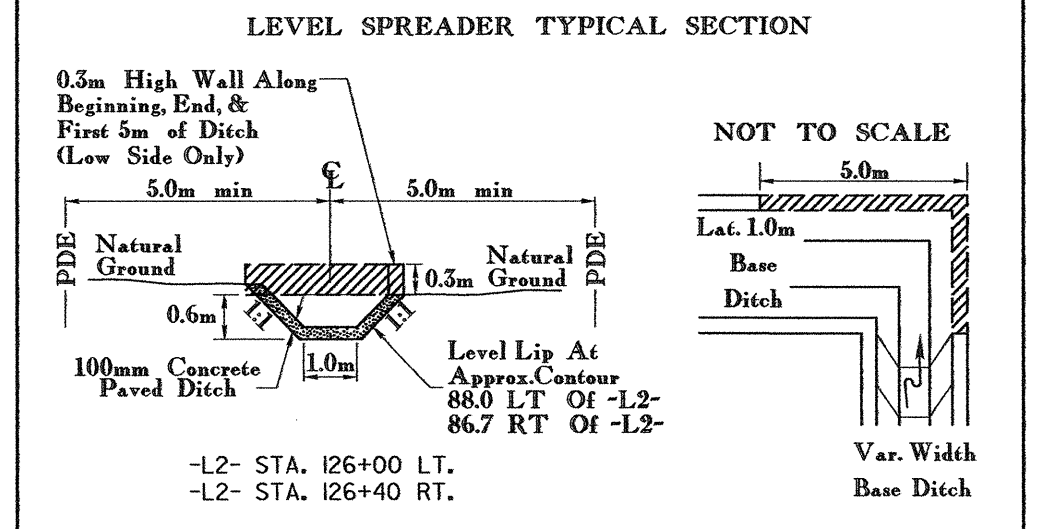
3/15/12

-L2LT-

PIs Sta 112+10.807	PI Sta 117+99.379	PIs Sta 123+72.715
$\theta s = 1^{\circ}00'08.7''$	$\Delta = 23^{\circ}11'01.2''$ (LT)	$\theta s = 1^{\circ}00'08.7''$
$Ls = 95.000$	$L = 1,098.574$	$Ls = 95.000$
$LT = 63.334$	$T = 556.906$	$LT = 63.334$
$ST = 31.668$	$R = 2,715.000$	$ST = 31.668$
	$SE = 0.03$	
	$DS = 110$ km/h	

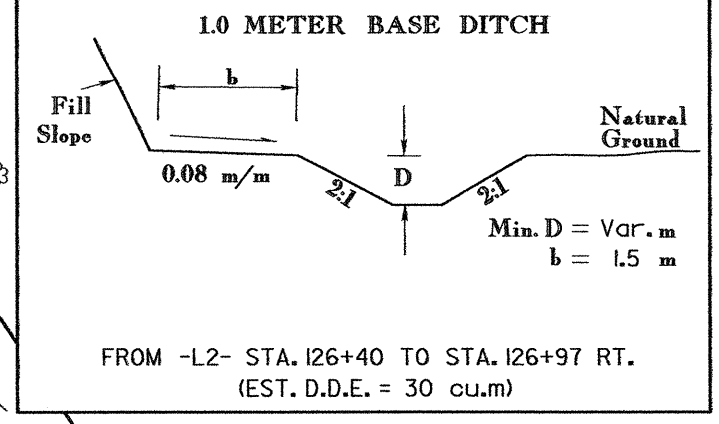
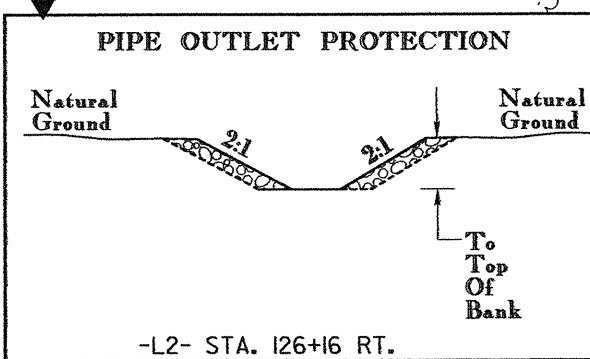
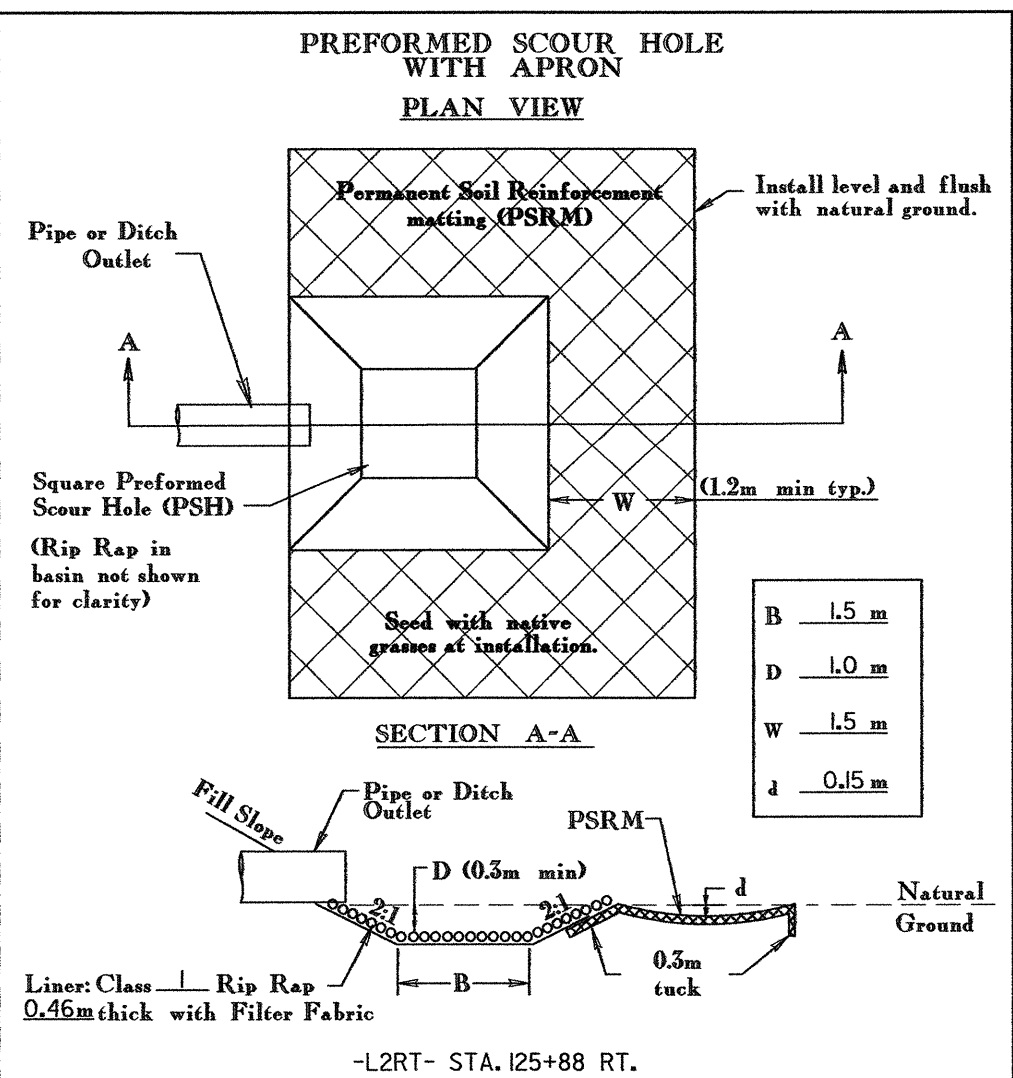
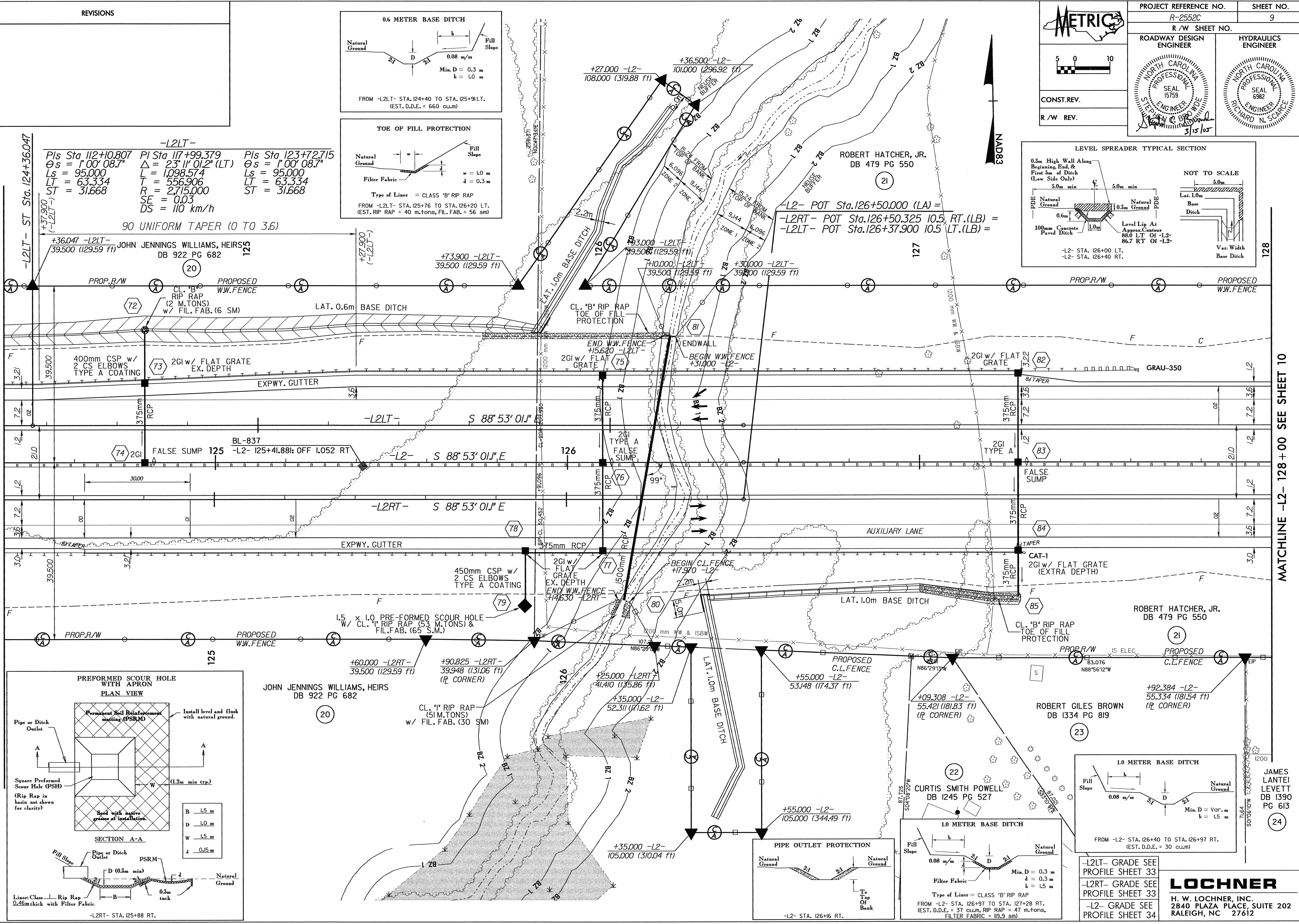
90 UNIFORM TAPER (0 TO 3.6)

JOHN JENNINGS WILLIAMS, HEIRS
DB 922 PG 682



MATCHLINE -L2- 124+40 SEE SHEET 8

MATCHLINE -L2- 128+00 SEE SHEET 10



-L2LT- GRADE SEE PROFILE SHEET 33
-L2RT- GRADE SEE PROFILE SHEET 33
-L2- GRADE SEE PROFILE SHEET 34

LOCHNER
H. W. LOCHNER, INC.
2840 PLAZA PLACE, SUITE 202
RALEIGH, NC 27612

1:1 VERTICAL CURVES
SUBMITTED BY WISRE-RENO
DATE 02/28/12