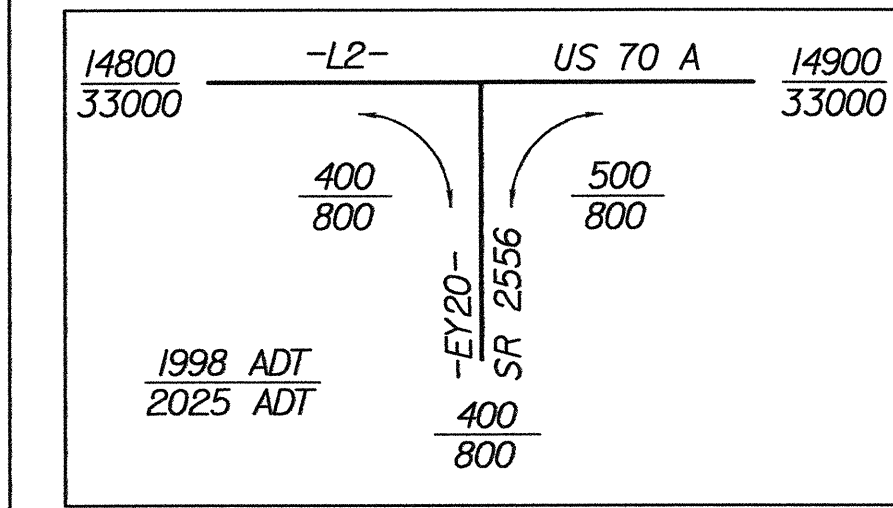


REVISIONS	



-EY20-
 PI Sta 16+50.237
 $\Delta = 83^{\circ} 58' 56.0''$ (LT)
 $L = 33.713$
 $T = 20.703$
 $R = 23.000$
 SE = EXISTING

PIs Sta 157+46.519
 $\Theta_s = 2^{\circ} 57' 09.9''$
 $L_s = 90.000$
 $LT = 60.008$
 $ST = 30.008$

-L2-
 PI Sta 159+54.983
 $\Delta = 23^{\circ} 06' 12.2''$ (LT)
 $L = 352.097$
 $T = 178.473$
 $R = 873.189$
 SE = EXISTING
 DS = 110 km/h

PIs Sta 161+58.614
 $\Theta_s = 2^{\circ} 57' 09.9''$
 $L_s = 90.000$
 $LT = 60.008$
 $ST = 30.008$

METRIC

PROJECT REFERENCE NO. R-2552C SHEET NO. 18
 R/W SHEET NO.

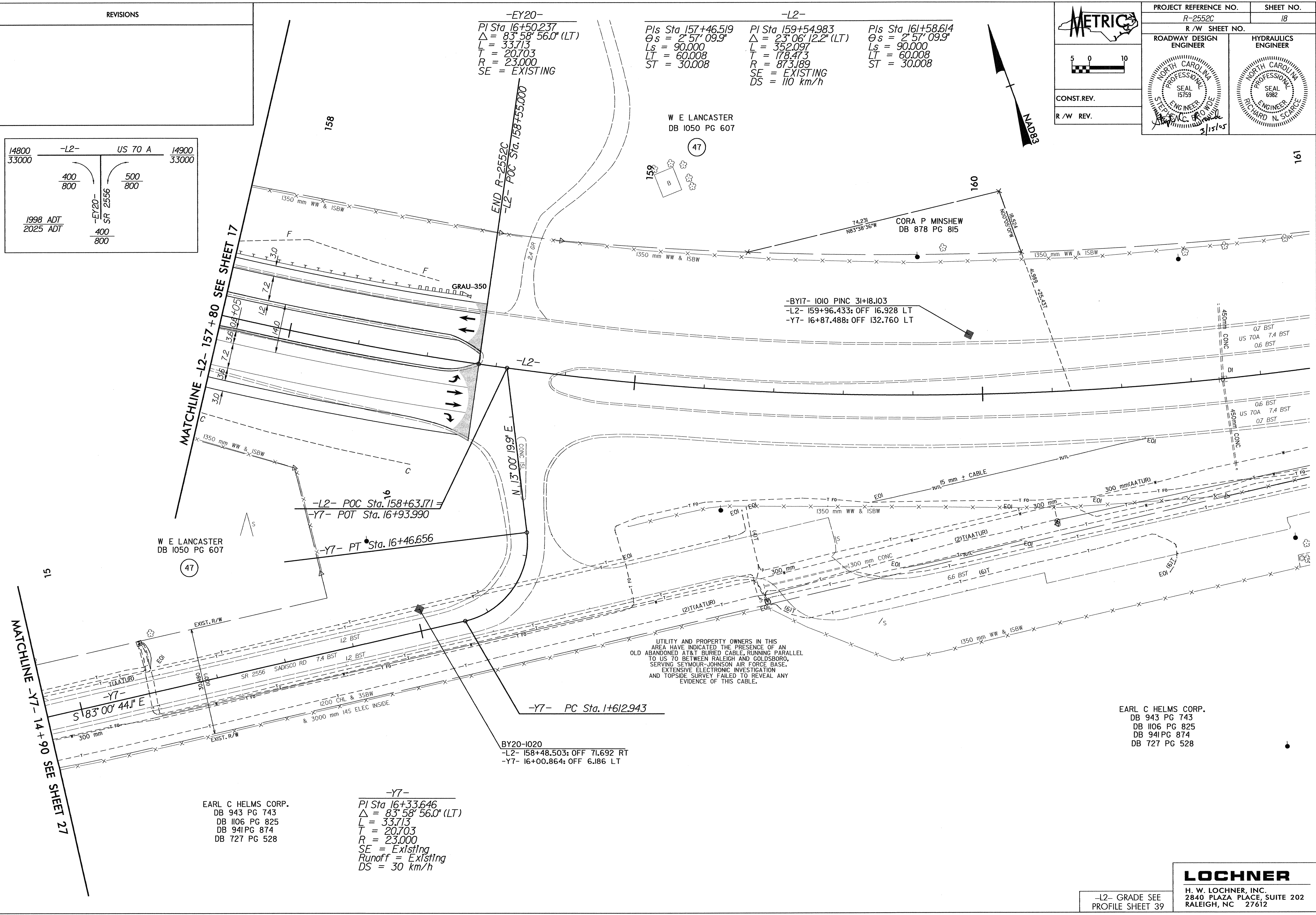
ROADWAY DESIGN ENGINEER: [Signature]
 HYDRAULICS ENGINEER: [Signature]

CONST. REV.
 R/W REV.

Professional Engineer Seals for North Carolina: [Seal 15759], [Seal 6982]

Scale: 1" = 10'

North Arrow: NAD83



-L2- POC Sta. 158+63.171
 -Y7- POT Sta. 16+93.990

-Y7- PT Sta. 16+46.656

-Y7- PC Sta. 1+612.943

BY20-1020
 -L2- 158+48.503: OFF 71.692 RT
 -Y7- 16+00.864: OFF 6.186 LT

EARL C HELMS CORP.
 DB 943 PG 743
 DB 1106 PG 825
 DB 941 PG 874
 DB 727 PG 528

-Y7-
 PI Sta 16+33.646
 $\Delta = 83^{\circ} 58' 56.0''$ (LT)
 $L = 33.713$
 $T = 20.703$
 $R = 23.000$
 SE = Existing
 Runoff = Existing
 DS = 30 km/h

UTILITY AND PROPERTY OWNERS IN THIS AREA HAVE INDICATED THE PRESENCE OF AN OLD ABANDONED AT&T BURIED CABLE, RUNNING PARALLEL TO US 70 BETWEEN RALEIGH AND GOLDSBORO, SERVING SEYMOUR-JOHNSON AIR FORCE BASE. EXTENSIVE ELECTRONIC INVESTIGATION AND TOPSIDE SURVEY FAILED TO REVEAL ANY EVIDENCE OF THIS CABLE.

EARL C HELMS CORP.
 DB 943 PG 743
 DB 1106 PG 825
 DB 941 PG 874
 DB 727 PG 528

LOCHNER
 H. W. LOCHNER, INC.
 2840 PLAZA PLACE, SUITE 202
 RALEIGH, NC 27612

-L2- GRADE SEE PROFILE SHEET 39

17-MAR-2005 12:51
 J:\N\27\DESIGN\2552C\DRG\FSH18.DGN