
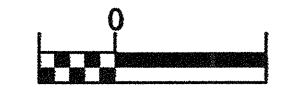
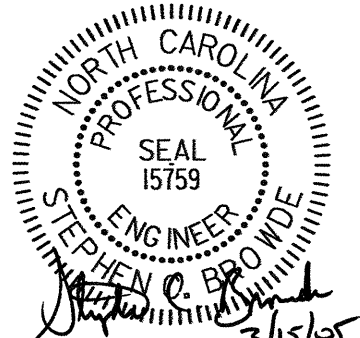
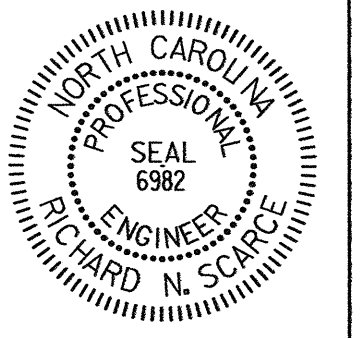
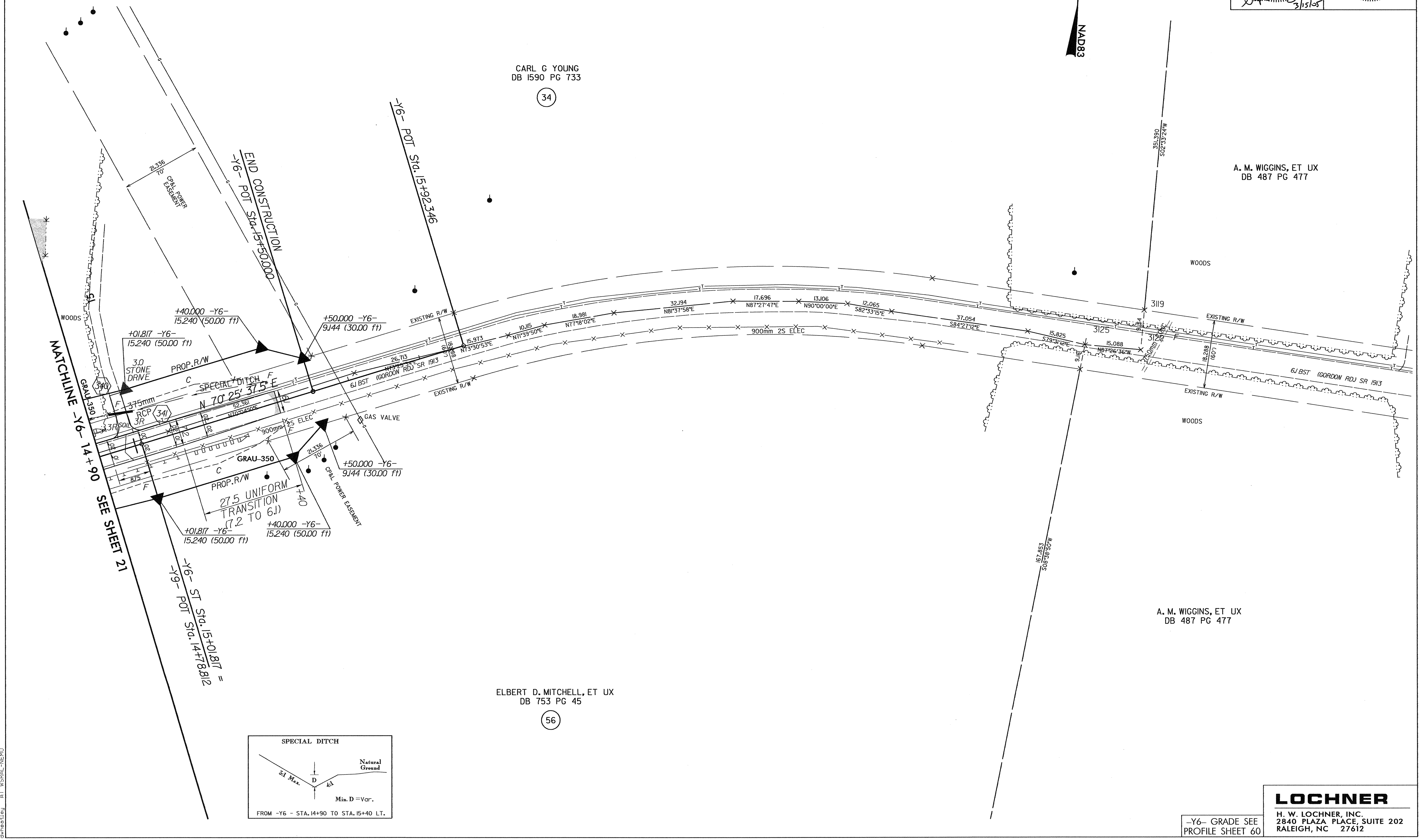


REVISIONS

-Y6-

PI Sta 13+33.231	PI Sta 13+94.502	PI Sta 14+55.202
$\Theta s = 8^{\circ} 43' 8.1''$	$\Delta = 18^{\circ} 45' 37.4''$ (LT)	$\Theta s = 8^{\circ} 43' 8.1''$
$Ls = 70.000$	$L = 75.309$	$Ls = 70.000$
$LT = 46.723$	$T = 37.995$	$LT = 46.723$
$ST = 23.385$	$R = 230.000$	$ST = 23.385$
	$SE = 0.08$	
	$DS = 80 \text{ km/h}$	

	PROJECT REFERENCE NO.	SHEET NO.
	R-2552C	22
	R / W SHEET NO.	
	ROADWAY DESIGN ENGINEER	HYDRAULICS ENGINEER
		
	CONST. REV. R / W REV.	



CARL G YOUNG
DB 1590 PG 733

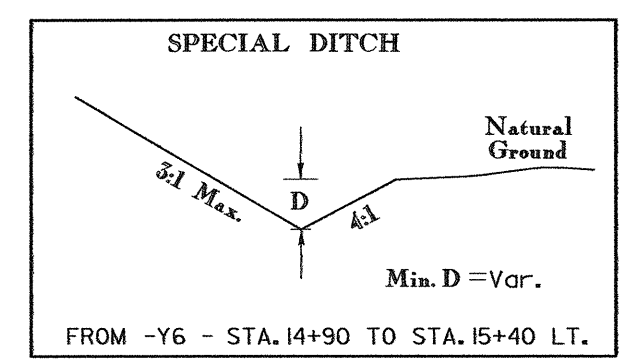
(34)

A. M. WIGGINS, ET UX
DB 487 PG 477

A. M. WIGGINS, ET UX
DB 487 PG 477

ELBERT D. MITCHELL, ET UX
DB 753 PG 45

(56)



LOCHNER
H. W. LOCHNER, INC.
2840 PLAZA PLACE, SUITE 202
RALEIGH, NC 27612

-Y6- GRADE SEE
PROFILE SHEET 60

18-WAF-2006-15149-2552C-BDY-FSH22.DGN
3/15/06 10:51:49 AM WSRAL-NEW