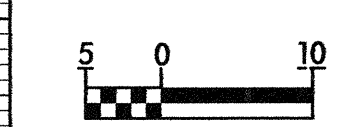




ROADWAY DESIGN ENGINEER
HYDRAULICS ENGINEER

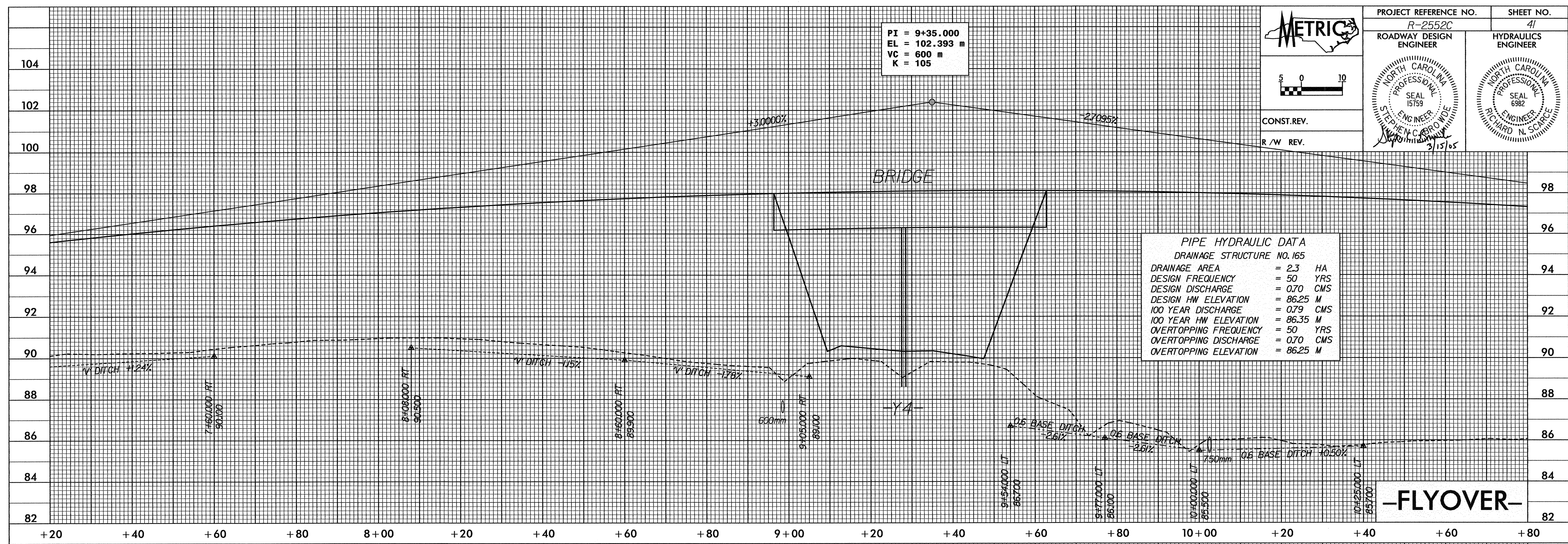
SEAL 15159
STEPHEN C. BORO M.P.E.
3/15/05

SEAL 6982
RICHARD N. SCIRCE
ENGINEER



CONST. REV.
R/W REV.

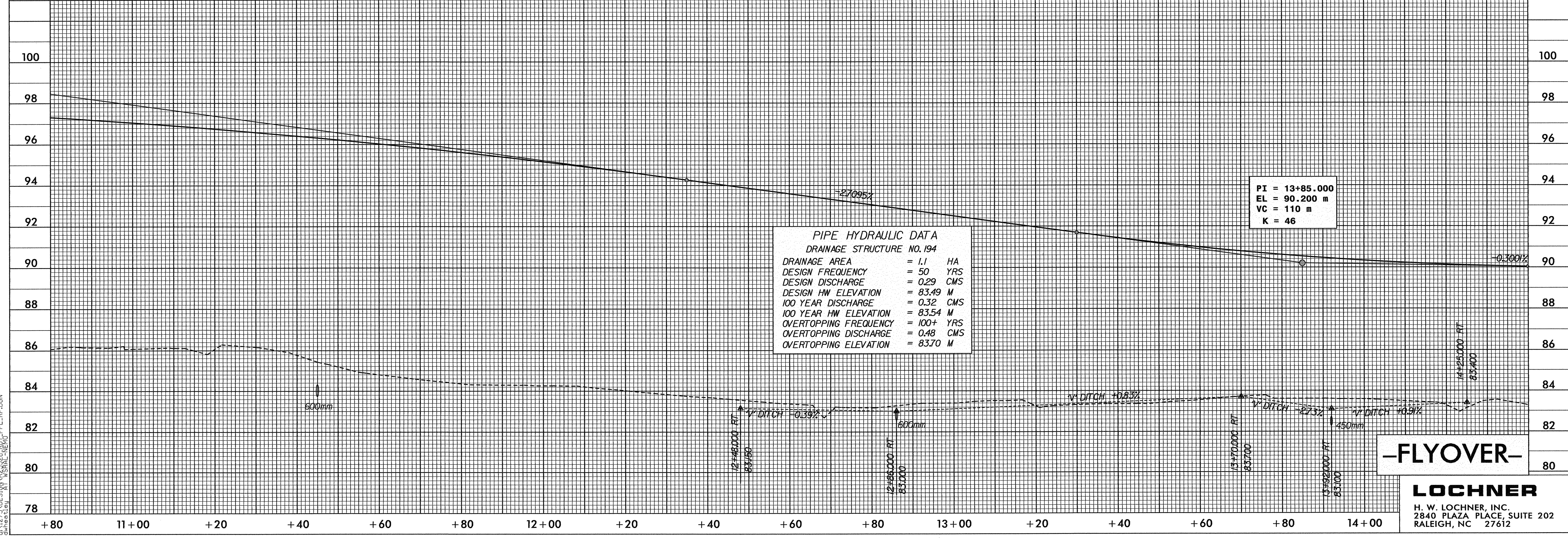
PI = 9+35.000
EL = 102.393 m
VC = 600 m
K = 105



PIPE HYDRAULIC DATA
DRAINAGE STRUCTURE NO. 165

DRAINAGE AREA	= 2.3	HA
DESIGN FREQUENCY	= 50	YRS
DESIGN DISCHARGE	= 0.70	CMS
DESIGN HW ELEVATION	= 86.25	M
100 YEAR DISCHARGE	= 0.79	CMS
100 YEAR HW ELEVATION	= 86.35	M
OVERTOPPING FREQUENCY	= 50	YRS
OVERTOPPING DISCHARGE	= 0.70	CMS
OVERTOPPING ELEVATION	= 86.25	M

-FLYOVER-



PIPE HYDRAULIC DATA
DRAINAGE STRUCTURE NO. 194

DRAINAGE AREA	= 1.1	HA
DESIGN FREQUENCY	= 50	YRS
DESIGN DISCHARGE	= 0.29	CMS
DESIGN HW ELEVATION	= 83.49	M
100 YEAR DISCHARGE	= 0.32	CMS
100 YEAR HW ELEVATION	= 83.54	M
OVERTOPPING FREQUENCY	= 100+	YRS
OVERTOPPING DISCHARGE	= 0.48	CMS
OVERTOPPING ELEVATION	= 83.70	M

PI = 13+85.000
EL = 90.200 m
VC = 110 m
K = 46

-FLYOVER-

LOCHNER
H. W. LOCHNER, INC.
2840 PLAZA PLACE, SUITE 202
RALEIGH, NC 27612

IT-MAP-2005 P252
JAN 12 2005 10:51 AM
C:\PROJECTS\2552C\2552C-RD\REFL-RP.DGN